



ROTARY CLUB OF PATAN  
DISTRICT 3290, CLUB NO. 23126

ललित धारा

LALIT DHARA SOUVENIR ISSUE

8th

Installation

Ceremony

12 July, 1993

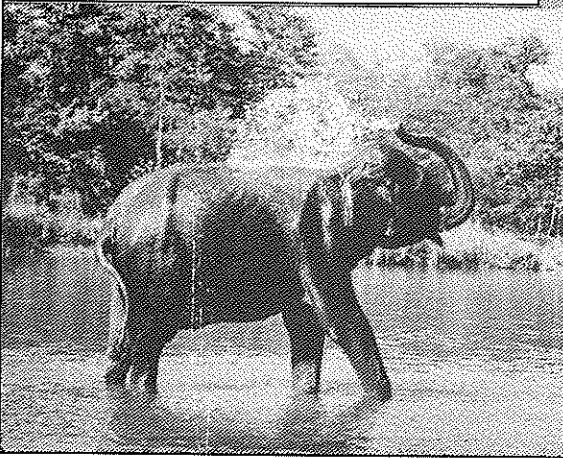
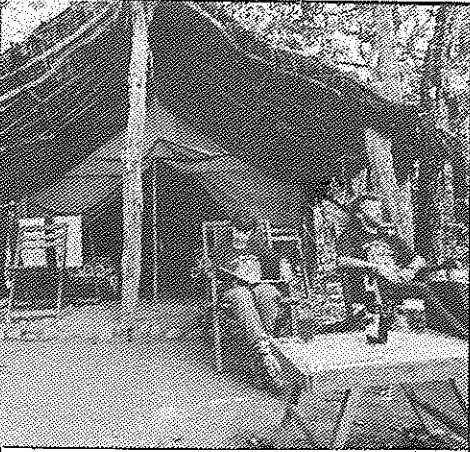
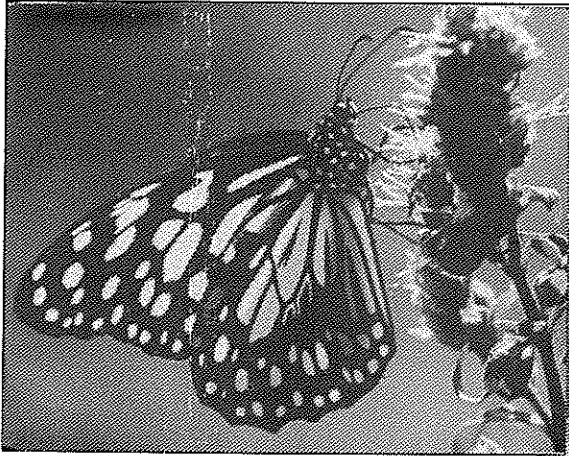
BELIEVE  
IN WHAT  
YOU DO



DO WHAT  
YOU  
BELIEVE IN



**Wildlife adventure  
in luxury lodges  
and tented camps**



**An exclusive wildlife  
camp at a prime  
location inside the  
Royal Chitwan  
National Park.**



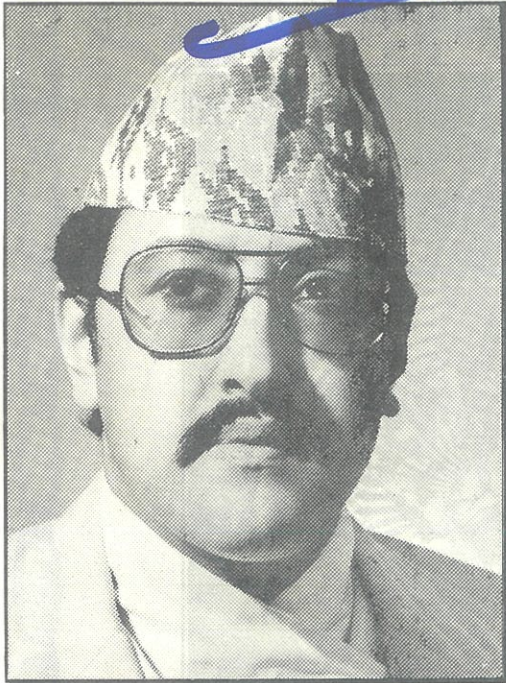
***Island Jungle Resort***

G.P.O. Box 2154, Durbar Marg, Kathmandu

Phone: 220162, 225615, 229116

Telex: NP 2409 Alpine Fax: 977-1-223814

SRS



His Majesty King  
Birendra Bir Bikram Shah Dev

Her Majesty Queen  
Aishwarya Rajya Laxmi Devi Shah

*“A culture based on the values of democracy evolves  
from the collective aspirations and concerns  
of individual.”*

- HIS MAJESTY KING BIRENDRA

**WE EXPORT, ONLY THE BEST**  
**WE MANUFACTURE**

*Remember us For Traditional Craftmanship*



**MAHABAUDHA BIDYADHARI SILPA BHANDAR (P) LTD.**

Manufacturer & Exporter of Handicraft Goods &  
Thangka Painting Specialist

PATAN INDUSTRIAL ESTATE, LALITPUR, KATHMANDU, NEPAL

P.O. BOX 1271 TEL: 521358, 525856

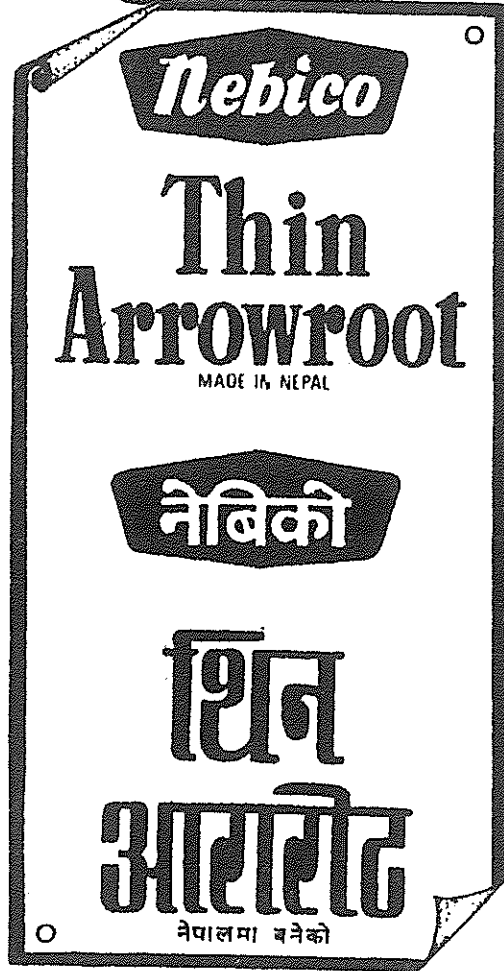
FAX: 977-1-226590

*For further details please contact:*

*Rtn. N. N. Shakyabansa*

Nebico नेबिको Nebico नेबिको Nebico नेबिको Nebico नेबिको

# सबै एकै होइनन्नु!



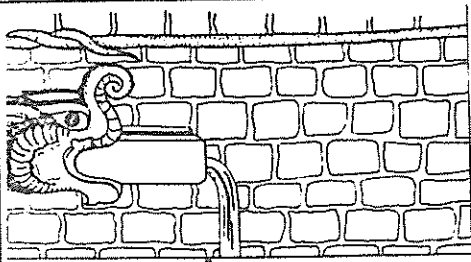
BN/SSAR PBO-53

**नेबिको** मार्का 'शतो' भएको थिन आररुट  
ने सधैं खोज्नु होस्।

रसिलो पोसिलो

**नेबिको**

नेपाल गुणस्तर विन  
NS 14



**LALIT DHARA SOUVENIR ISSUE**  
**8TH INSTALLATION CEREMONY**  
**12 JULY, 1993**

**Co-ordinator**  
Rtn. Sagar SJB Rana  
Vice-President

**Computer:**  
Mahesh Adhikari  
Chhabi Shrestha  
Ramesh Waiba

**Production /  
Supervision**  
Media World  
Advertising & Media  
Service  
Tel: 211886

**Published by:**  
Rotary Club of Patan

**Printed at:**  
Jeewan Printing  
Support Press  
Nayabazar, Kathmandu  
Tel: 412345

**Cover Design :**  
Amar 'Balak'

**Cover Photo:**  
Rotary Int'l Award  
conferred on RCP for  
Resoration Project of  
Dhunge Dharas

**CONTENTS**

Message from RCP President	Bijaya Bajracharya	5
नेपालमा रोटररीको गति	रो. कमलमणी दीक्षित	6
Rotary Club of Patan	Rtn. Sagar SJB Rana	8
RCP Club Service	Rtn. Tirthaman Sakya	12
RCP Vocational Service	Rtn. N. N. Sakyabansha	13
RCP Community Services	Rtn. B. K. Shrestha & N. B. Mathema	14
RCP International Service	Rtn. Sagar SJB Rana	16
Adult Orthopaedic Hospital in Jorpati	Rtn. B. K. Shrestha	18
Patan Rotary Education Trust	Rtn. P. P. Prasai	28
The Traditional Water Spout Rehabilitation Project	Rtn. N. G. Halwai	30
Club Activities		34
RCP Executive Council		38
RCP Members		39

**BELIEVE  
IN WHAT  
YOU DO**



**DO WHAT  
YOU  
BELIEVE IN**

THE ROTARY INTERNATIONAL THEME  
1993-1994



**ROTARY INTERNATIONAL  
ROTARY CLUB OF PATAN**

CHARTERED 19.04.1985  
RI DISTRICT 3290 CLUB NO. 23160  
1993-1994

**MESSAGE FROM THE PRESIDENT  
OF THE  
ROTARY CLUB OF PATAN**



**I believe that**

**Our club has made a niche for itself in the Rotary World of Nepal. Though only 8 years old the Rotary Club has made headway in the field communities service in Lalitpur and Kathmandu. All the credit for these achievements go to my predecessors, the former Presidents of this Club and their team mate. I on my part will do my best to keep up the tempo of the good work started by them.**

**I am proud to belong to this Club and am happy that my friends have elected me to be its president for 1993-94. I will not let them down in my service to the Club. But I need all the assistance and co-operation from my colleagues.**

**Yours in Rotary**

**(Bijay Bajracharya)**

# नेपालमा रोटरीको गति

////// ○ रो. कमलमणि दीक्षित ////

नेपालमा रोटरी भारत (बिहारराज्य) को दरभङ्गाबाट भित्रियो। सन् १९५९ मा दरभङ्गाको रोटरी क्लबले “स्पान्सर” गरेर उसबखतको डिस्ट्रिक्ट ३२७ मा काठमाण्डू रोटरी क्लब सामेल हुँदा त्यो “डिस्ट्रिक्ट” पाँच - राष्ट्रको साझा थियो। त्यसमा भारतका विहार, बंगाल र आसाम, सिक्किम (छुट्टै राज्य), बर्मा, भुटान र नेपाल पर्दथे। बंगालदेश (त्यस बेलाको पूर्वी पाकिस्तान) पश्चिमी पाकिस्तानको डिस्ट्रिक्ट अन्तर्गत थियो। बर्माले रोटरीलाई “ब्यान” गरेपछि र सिक्किमको भारतमा विलय भएपछि (भूटानमा त सके कुनै सक्रिय क्लब नै खुलेन क्यारे!) यस डिस्ट्रिक्टमा दुई राष्ट्र (पूर्वी भारत र नेपाल) मात्रै रहन गए तर त्यसै बेला पाकिस्तान छुट्टिएर बंगलादेश अलग भएपछि उनीहरूले कलकत्ता भएकै डिस्ट्रिक्टमा बस्ने इच्छा गरेकाले हाम्रो डिस्ट्रिक्ट पुनः ३-राष्ट्र-डिस्ट्रिक्ट भएको थियो। यसैबीच विहार राज्य पनि ३२५ बाट छुट्टिएर गैसकेको थियो। डिस्ट्रिक्ट विभाजनकै लहरमा बंगलादेश करीव ४०/५० ओटा क्लब खुलिसकेकोले उसले आफ्नो छुट्टै डिस्ट्रिक्ट बनाउने माग गर्‍यो र ३२८ भयो। अनि फेरि हाम्रो डिस्ट्रिक्ट दुई राष्ट्र डिस्ट्रिक्ट भयो। त्यसपछि असम आदि पूर्वी भारतका राज्यहरूले पनि आफ्नै डिस्ट्रिक्ट बनाउन चाहे। ती पनि ३२९० बाट छुट्टिएर गए। अब हाम्रो डि. ३२९० मा नेपालका आठ, पश्चिम बंगालका ६६ र अण्डमान द्वीपको १ समेत गरी जम्मा ७५ क्लब छन्। अचम्म के छ भने सगरमाथाको देश नेपाल र पैलेको भारतीय कैदीहरूले “कालापानी” को सजाय भोग्न जाने पोर्ट ब्लेयर एले एकै “जिल्ला” भित्र परेका छन्।

जिल्लाकै कुरा गर्दा नेपालले आफ्नै रोटरी

जिल्ला (डिस्ट्रिक्ट) बनाउने बेला भएन त ? भन्ने सवाल स्वतः उठ्छ। रोटरीभन्दा निकै पछि नेपाल भित्रिएको “लायन्स” ले नेपालमा उहिल्यै आफ्नो छुट्टै “जिल्ला” बनाउन सफल भैसक्यो। हामी किन पछि ? यो प्रश्न हामीले अरूलाई होइन, आफैलाई गर्नुपर्ने छ।

यो “किन ? को” जवाफ सजिलो पनि छ र गाह्रो पनि छ। सजिलो कुन अर्थमा भने हामीले आफ्नै नेपाल डिस्ट्रिक्ट बनाउन हामीलाई क्लब संख्या पुग्दैन भनिदिए सकिन्छ। गाह्रो चाहिँ पर्छ जब “किन पुगेन त ?” भनेर सोधिन्छ। रोटरी इन्टरनेशनलका पदाधिकारीहरूसँग भन्यो भने उनीहरू भन्छन् एउटा छुट्टै डिस्ट्रिक्ट तबसम्म बन्न सक्तैन जब सम्म मनगरे क्लबहरू हुदैनन्। कुनै पनि डिस्ट्रिक्टमा आर.आइ. ले कतिपय खर्च गर्नु पर्छ। उदाहरणार्थ - त्यसको प्रत्येक नयाँ गभर्नरलाई एकमहीने तालिमका लागि हेडक्वार्टरमा लगेर पाल्नु पर्छ। हवाईजहाज खर्च, खाना खर्च पुर्‍याउनु पर्छ। प्रत्येक महीना डिस्ट्रिक्टसँग अनेकौं कागजपत्र, फ्याक्स, टेलिफोन गर्न आर. आइ. ले प्रशस्त खर्च गर्नुपर्छ। त्यो सबै खर्च उसले आफ्नै कोष रित्याएर गर्दैन, गर्न सक्तैन। उसले त्यस डिस्ट्रिक्टका लागि गर्नुपर्ने खर्च त्यही डिस्ट्रिक्टबाटै उठाउन सक्ने संख्यामा त्यहाँ क्लबहरू र सदस्यसंख्या पुग्नु पर्छ भन्छ आर.आइ.। त्यसैले कममा पनि २०/२५ ओटा क्लब र ५/६ सय सदस्य नपुगी रोटरी इन्टरनेशनलले नयाँ डिस्ट्रिक्ट खोल्न साधारणतः मान्दैन। फेरि, आर.आइ. ले नयाँ डिस्ट्रिक्ट खोल्न स्वीकृति दिनुभन्दा पहिले साविक डिस्ट्रिक्टले यसरी छुट्टिएर जाने कुराको अनुमोदन गर्छ कि गर्दैन भन्ने पनि बुझ्छ।

यी सबै प्रक्रियाहरूले गर्दा हामीले नेपालमा



आफ्नै रोटररी डिस्ट्रिक्ट बनाउने काम त्यति सजिलो छैन । त्यसमाथि पनि ऐले त हामीले पहिलो पाठ पनि पूरा गरेका छैनौं । नेपालमा नगरपालिकाहरूको संख्या दुई दर्जन जति छन् । तर सात ओटाभन्दा बढी शहरमा हामीले प्रवेश पाएकै छैनौं । पोखरा, सिद्धार्थनगर, नेपालगन्ज विर्तामोड-भद्रपुर जस्ता ठाउँमा सम्म पनि हामीले एउटा क्लब खोल्न भ्याएका छैनौं । त्यतापट्टि हामीले पहिले लाग्नु पर्छ । कुनै ठाउँमा नयाँ क्लब खोल्नलाई एउटा क्लबले स्पान्सर (प्रायोजन) गर्ने परम्परा छ रोटररीमा । त्यसैले हाम्रा ऐले भएका आठ ओटा क्लबले एक एक ओटा क्लब खोल्न जमर्को गरे सोन्ह ओटा रोटररी क्लब पुग्न सक्छन् । यसै उद्देश्यले पाटन रोटररी क्लबले एउटा इन्टरसिटी (नेपाल) रोटररी भेटघाटको आयोजना गर्ने अठोट गरेको छ । त्यो सफल भएमा यसबारे राम्ररी छलफल गरी कुन कुन क्लबले कहाँ कहाँ "स्पान्सर" गर्न सक्छ त्यो ठेगान गर्न सकिने छ । लायन्ससँग प्रतिस्पर्धा गर्नलाई होइन, तर अन्तर्राष्ट्रिय औचित्यले पनि हाम्रो, नेपालमा, आफ्नै रोटररी डिस्ट्रिक्ट हुनु आवश्यक छ । कुरो पंचायत कालको हो ता पनि यहाँनिर एउटा कुरा सम्भन मन लाग्छ । मार्मिक छ । त्यो श्री ५ बडामहारानीको अध्यक्षतामा सामाजिक सेवा राष्ट्रिय समन्वय परिषद्को गठन भएपछि नेपालमा रहेका सबै सामाजिक संस्था, संगठनहरूका प्रतिनिधिहरूको भेला हुन्थ्यो नियमित राजदरवारमा । त्यस्ता वेलामा काठमाण्डू रोटररी क्लबका तर्फबाट २/३ पटक यस लेखकले पनि भाग लिन जानु परेको थियो । भाग लिनु माने त्यस विशाल र गरिमामय समूहमा आफ्नो संगठनबारे बोल्नु पनि पर्थ्यो । नेपालमा रोटररीको स्थापना श्री ५ महेन्द्रको सदासयले भएको कुरा, रोटररीको संरक्षक मौसूफ होइवक्सेको कुरा मौसूफबाट बक्सेको आर्थिक सहयोग स्वरूप निर्माण भएको रोटररी हलका कुरा सबै बेलिविस्तार लगाइसकेपछि मैले नेपालमा रोटररीले राम्रो जरो गाड्न नसकेको तथ्य जाहीर गरेको थिएँ । त्यसमा भेलाको परम्पराअनुसार अन्त्यमा, अध्यक्ष बडामहारानी

सरकारबाट एकदुई एकदुई वाक्यमा प्रत्येक संस्थाका विषयमा निर्देशन ("डाइरेक्टिभ") पनि बक्सन्थ्यो । रोटररीको बारेमा मौसूफबाट हुकुम भएको थियो, "रोटररीले नेपालमा आफ्नै डिस्ट्रिक्ट, आफ्नै गर्भनर बनाउने प्रयत्न गर्ने" । पूरकका रूपमा, आफ्नै डिस्ट्रिक्ट, आफ्नै गर्भनर बनाउने धेरै क्लब चाहिन्छ भन्ने जाहेर गर्दा मौसूफबाट "सकेसम्म छिटो, सकेसम्म धेरै क्लब खोल्ने" हुकुम भएको पनि स्मरण हुन्छ ।

तर, हामीले धेरै केही गर्न सकेनौं । त्यसपछि पाटन, वीरगन्ज, धरान, र धेरैपछि मिडटाउन, चितवन र हेटौडा जस्ता क्लबहरू खुले त्यति हो । अब समय आएको छ । देशमा बहुदलीय प्रजातन्त्रले जरा गाडिसकेको अवस्थामा पनि हामीले केही गरेनौं भने हामी जवाफदेह हुनेछौं ।

यसै सिलसिलामा अर्को एउटा कुरा पनि सम्भना हुन्छ । सन् १९८० तिर भारतको नयाँ दिल्लीमा आर.आई प्रेसिडेण्टको दक्षिण एशियन कन्भेनसन अफ गुडविलमा नेपालका तर्फबाट बोल्नेमा यो लेखक पनि परेको थियो । त्यसमा अरू कुरा भन्दा पनि एउटा मैले भनेको कुरामा त्यहाँ प्रेसिडेण्टहरू प्रसन्न नभएको मैले बुझेको थिएँ । मैले के भनेको थिएँ भने - नेपाल आर. आइ. का लागि एउटा "केस स्टडी" को विषय हो । किन नेपालमा रोटररी आन्दोलनले व्यापकता पाउन सकेनन् हाम्रो (नेपालीको) कमजोरी हो कि रोटररीकै नियमावलीहरूले गर्दा यस्तो भएको हो तपाईंहरूले छानवीन गर्नु उचित छ इत्यादि भनेको थिएँ मैले वास्तवमा केही भएन, मैले भनेका कुरालाई उनीहरूले गम्भीरता साथ लिएनन् । त्यस्तै भयो । यो कुरा ऐलै किन सम्भनु पर्‍यो भने मैले १० वर्षभन्दा अघि भनेको कुरा ऐलैसम्म पनि समाधान भएको छैन । हाम्रो अन्तर्गरीय रोटररी सम्मेलनले यसबारेमा छलफल गर्ला ?

नेपालमा रोटररीको गति (स्पीड) अलि धीमै छ । त्यसलाई बढाउनु पर्‍यो 'एक्सिलरेट' गर्नु पर्‍यो ।

# Rotary Club of Patan

////// O Rtn. Sagar SJB Rana //////////////////////////////////////

Rotary club of Patan (RCP) was formed in 1985. It is the third Rotary Club to come up in Nepal. It took a long time, 26 years in fact, before RCP was to follow the first R.C in the Valley - the Kathmandu Rotary Club, established in 1959, under the patronage of no less a person than His Late Majesty King Mahendra Bir Bikram Shah Dev.

Once established, we are happy to say, RCP has grown into a vibrant and active unit.

- Our MEMBERSHIP is growing steadily, and we believe, as much in quality and variety, as in numbers; we are now a family of 33. We have promoted 2 other RC'S in Nepal - Rotary Club of Chitwan (1991-92) and Rotary Club of Hetauda (1992-93). We are committed, by our recent decision, to commence a sustained effort to increase the number of Clubs in Nepal and to this end, are planning an inter-city meeting in 1993-94, to be hosted by RCP. We have 6 Paul Harris Fellows and 3 sustaining members in the Club.

Our most valuable asset is the excellent camaraderie and fellowship between and within the membership. Attendance of 75% should improve and the strategy to do so may be to arrange greater and better variety of programmes during Club meetings.

Our good record in inter-Rotary fellowship continues, with two of our members attending the International Rotary Convention in far away Melbourne, Australia our President-elect Mr. Bijay Bajracharya and member Mr. Siddhi

Bahadur Sakya the only two representatives from Nepal. We expect a large contingent to visit Taiwan next year. The District Assembly was held in Kathmandu this year. Our offer to host it for 1994 is on the table. Through our youth Exchange Programme, RCP Club has offered home hospitality for a full year to Ms Brandy Ann Deraga from Canada: She will be attending the Fine Arts Campus in Kathmandu. Offer of a year's hospitality is, perhaps, the first offer of its kind from Nepal. Two librarians were sent to Germany for a six month's course of specialisation.

International Support for our Community Services has been generous and fulsome. US \$ 225,000 has been raised or committed for the 16 bed Adult Orthopaedic hospital; the construction should be completed by the end of 1994. We are most grateful to all the Clubs who contributed from District 7090 of Canada & U.S.A.

Our Dhunge Dhara Hitis (Water spout) restoration Project received recognition from the Rotary International. Rs. 285,000/- (two hundred and eighty five thousand) has been raised from local contributions, international input and support from concerned Department of HMG. Flow of water has been restored in two of the Dhunge Dhara Hitis. A comprehensive plan is being worked out to coordinate efforts of Government and non-Government organisations to restore all 42 of these works of utilitarian art, the Valley's unique heritage.

Our education fund has grown by

Rs. 61,500 to Rs. 363,820 this year and interest derived will cover scholarships for 40 or more students from Class VII to X.

An experimental project just outside the Valley, but in Patan District, aims at raising the quality/breed of goats in a remote and neglected village. A more ambitious project proposal, of similar nature but wider scope and covering health, sanitation, informal education and income generating activities in about 20 remote villages, farthest away (two days' walk) in Lalitpur, is submitted to Rotary International for funding. Village Core Groups will be formed to implement these programmes.

As with these larger and continuing work, RCP has taken up or completed smaller one time projects that cover supply of drinking water, school repair, help during natural calamities, urban conservation work or rural income generating

activities.

Training is being imparted, under vocational service programmes, in stone carving and Thanka (traditional ritual) painting. Next years' target, part of which is committed, would cover wider field including non-traditional areas such as travel trade, hotel restaurant related training, and electronics.

What has been achieved so far is not insignificant and compares well with other Clubs of our District in most areas of service. However what we have done is but a drop in the ocean of unending needs and we must always improve and grow. There is a lot of potential in the capabilities of our members, old and new. Perhaps in the coming years, we should build an effective mechanism that would channelise and harness the latent potential.

#### ABOUT ATTENDANCE & ENTERTAINING PROGRAMMES

*A newly wedded daughter-in-law was taken to the Gynaecologist, by the elders of the family for examination on the state of her fertility - as she had not yet conceived, after months of the wedding.*

*"How long has she been married?" asked the doctor and was told it was more than nine months. After examination, the Gyaeno confirmed that the lady was of perfectly good health in every way. "But where is the husband? Perhaps it is he who needs a check up", the doctor added and was told that he leaves town quite often and was away now.*

*The doctor thought for a time and opined "In that case the cause for non conception could well be lack of attendance, rather than fertility."*

*A month later the persistent family turned up again at the clinic, with the husband this time. "How often have you been home?" was the first query, before the tests. After an awkward pause the husband conceded that it was only "a few days, last month and then now".*

*"Well your attendance has been rather poor to guarantee good results, has it not?" The husband again paused before venturing: "Yes doctor but the programmes at home have not been too entertaining either".*

*One Rotarian in the audience, maybe the speaker's brother who has a particularly poor record of attendance, was rather pleased at this and to drive the point home, added a leading question.*

*"Why is it that the Rotarians who are absent for some compelling reasons, still have to pay for the dinners and lunches which he could not attend".*

*The Club Service Director too was piqued, not doubt, and made his point, "We have had some very good programmes. Yet for some Rotarians, the quality seems of little value."*

*Continued on Page 13 .....*

## CLUB SERVICE: 1992-1993

//////O Rtn. Tirtha Man Shakya //

The activities of Committees under Club services are briefly highlighted as follows.

Attendance Committee has been successful in maintaining the average Club attendance for the year at 75%. Two members have achieved 100% attendance and 13 members have registered above 80%. Development of Awareness for the attendance among the members is the great achievement of the Club.

The classification survey in the community was done. The unfulfilled classification has been notified to the Membership Development Committee. Three new members have been inducted. One member was dropped and one died leaving total membership at 33 as of June 30, 1993.

Club programmes were acclaimed by the members as evident from attendance record. The usual monthly programme consisted of business meeting, speech of Rotarians on their classification, speech of Chairpersons of Committees and guest speakers. The speeches were programmed in accordance with designated Rotary activities for the month. Besides there is Rotary Information mostly on each meeting.

There were 42 visitors including 6 foreign nationals and the breakdown of visiting Rotarian are as follows.

Kathmandu Valley Clubs	13
Outside Valley Clubs	13
Asian Countries	10
European Countries	5
American Countries	8
Australia	5

Twelve distinguished guest speakers were invited for sharing their experiences. They were:

1. Rt. Hon'ble Speaker Daman N. Dhungana
2. Dr. Devendra Raj Pandey
3. Mr. Ghore Bdr Khapung
4. Rtn Jagdish SJB Rana
5. Mr. Jagdish Ghimire
6. Mr. Andreas Proskch
7. Mr. Nayan B. Khattry
8. Dr. Devendra Raj Upadhyay
9. Dr. Kedar Lal Shrestha
10. Mr. Radhey Shyam Adhikary
11. Dr. (Mrs) Shanti Mathema
12. Mr. Ratna B. Bajracharya

Dr. C. P. Maskey, Dr. R. C. N. Amatya, five Rotarian speakers, Suresh Lakhey, Chirinjibi Acharya and Tirtha Man Shakya highlighted their classification. Six Chairmen of the Committees explained their Committee activities mostly at infancy stages.

The Club account was audited. All the RI and district dues were cleared on time. There is remarkable collection in Sunshine collection - Rs. 26,529.

Thirteen regular board meetings and one unofficial board meeting were held. Two assembly meetings were conducted.

The regular weekly bulletin publication since March 1, 1993 is another landmark of the Club's achievement.



## VOCATIONAL SERVICE: 1992-1993

////// O Rtn. Narendra Narsingh Sakyabansa ////

Co-ordination for the training of local people on traditional stone carving and Thanka painting (painting on cloth) have been successfully accomplished. A seed money was loaned for running the training courses which was recovered later by selling the products of the training.

A total of 20 trainees were selected from Lalitpur and the adjoining area. The trainee was paid for his seminar. The output of the training was sold and the income spent to reimburse the initial investment, pay the salary of the trainer, provide nominal stipend to the trainees and provide the training material.

Some of the trainees have started their own business as a result of this training. The experience of the training has proved that the success of such training depend upon the marketing of the training products. The Club is interested to expand such training.

The above experience has deeply impressed other Club members. It was decided to provide vocational awareness among high school children. Some Club members have committed to provide vocational training to school graduates on their industries along with nominal stipend during the training period. Other trainings identified, are;

- \* Cooking and kitchen management in hotel
- \* Airline ticketing
- \* Wood carving
- \* Carpet weaving
- \* Trekking guides

The implementation strategy of above vocational training programme need to be further explored.

### About Attendance ..... (Continued from Page 11)

*The speaker replied after a brief thought, "An American tourist was examining the Bill presented by the Cashier, before departure from his Hotel, somewhere in East Asia. One of the heavier charges on the fat bill, was under the heading "Pretty Companion".*

*"What the devil is this item?" queried the trate tourist.*

*The receptionist pointed out politely that at the time of checking in, a "pretty companion" was provided in the room - a traditional form of local hospitality.*

*"I never made use of your hospotality, thank you", the texan snapped back. The guest Relations officer now intervened, "We provide all possible facilities in the Hotel, Sir. It is entirely up to our guests good sense whether they make use of the excellent services and facilities."*

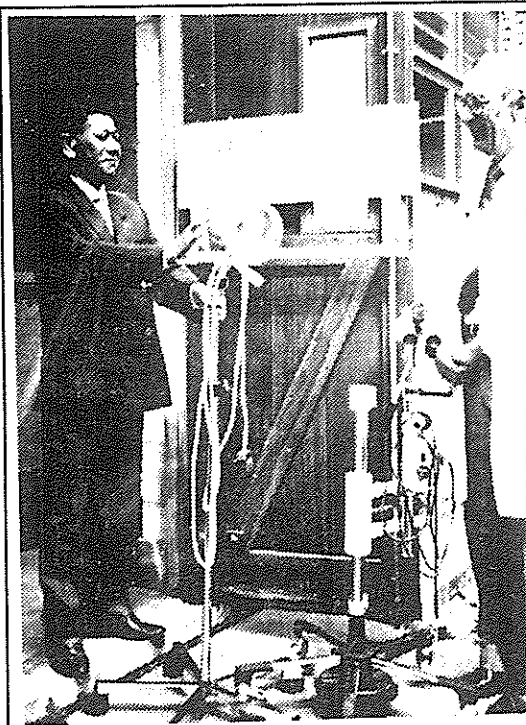
*The American felt as deflated as the brother in the audience.*

**Courtesy : H'ble Mr. Jagadish S.J.B. Rana - Rotary Governor, Simla District No. 3080 (1985 - 86)**

COMMUNITY SERVICES

//////○ Rtns. Bihari K. Shrestha & Nanda B. Mathema//////

Some of the recent and on-going community service activities of the Patan Rotary Club have been the provision of 33 scholarships to needy and deserving students in and around Patan, 'adopting' and supporting three wards in the local institution for destitute children, initiating a small livestock-based income generating project in a remote and poor village, drinking water projects in similar locations outside the Kathmandu valley, and maintaining a cold chain for polio-plus in a sub-district government Health Post in Lalitpur district of which Patan is the capital.



*Handing Over of Medical Equipment to Patan Hospital*

ultrasonic machine and accessories for the Anmp Pipal Hospital in a roadless location in the western mountain district of Gorkha. While the Club has been the proud recipient of the Rotary International Award (picture above) for its initial successes in the culturally and historically important project of the rehabilitation of a number of traditional stone spouts in Patan, it has just recently embarked upon an ambitious project of constructing an Adult Orthopaedic Hospital described separately in this issue.

**Resource Mobilization:**

Considerable sums of financial resources are internally generated by the Club towards such 'heart-beat' pursuits through a sustained system of resource mobilization from its members in its Sunshine Fund. Almost all personal events, big and small, of the members call for a 'celebration' in the club meeting such as birth or marriage anniversary, 'safe' return from an overseas trip, a TV appearance, or an interview in one of the scores of local weeklies, etc.

With assistance from different sources, the Club has also provided internal telephone system and some dental and other medical equipment for the local Patan Hospital, and an

The members give him or her a big hand and an ever-ready bouquet of flowers, while he or she herself coughs up a minimum of 100 rupees (US\$ 2). Sometimes, discerning members draw attention to the 'brilliance' of the TV interview of a member's wife which also draws a wry smile and the said amount from him. Occasionally, for special causes, there are also lumpsum donations from the wealthier members of the Club which also includes a number

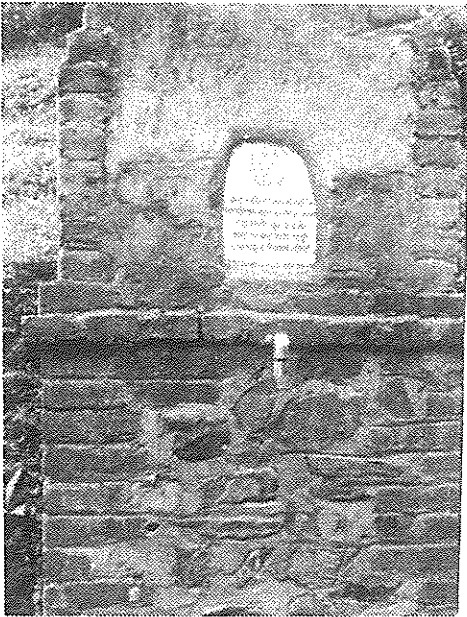
of not-so-poor members.

The Club, however, depends upon external sources for much of its resource needs for its projects. While the RI District 7090 funding for the afore-said orthopaedic hospital has by far been the biggest single such external assistance, other local and foreign sources include institutions such as SAP-Nepal, and Water Aid (UK), as well as a number of foreign Rotary Clubs and individual Rotarians.

#### **Streamlining Priorities:**

Despite these untiring efforts, the Patan Rotary Club has come to realize that its resources would, after all, remain limited while the demands for them have been many and varied. Therefore, the Club recently decided to streamline its priorities for its community services activities, and has accordingly required that they should fulfill the following criteria: sustainability, replicability, promoting self-reliance, mobilizing maximum local resources, and consistent with donor preference where one is involved.

In this connection, it was also recognized that with half of the nation's population under the state of absolute poverty, the Rotarians owe a special obligation to this problem. Therefore, poverty alleviation should be accorded a high priority for the Club's activities. It is expected that the members of the Club each of whom represents a high level of attainment and distinction in different professions, would significantly participate in the activities to be designed to address this multi-dimensional problem in selected communities, and to contribute, however modestly, to the growth of national experience in this very important field.



***Water Tap Constructed at Kavre by RCP***



***Dialogue with Participating Communities***

## INTERNATIONAL SERVICE

////// O Rtn. Sagar SJB Rana //

Past two years activities in the Club reveal a gradual process of decentralisation that is both desirable and inevitable in context of the growth in membership and activities of the Club.

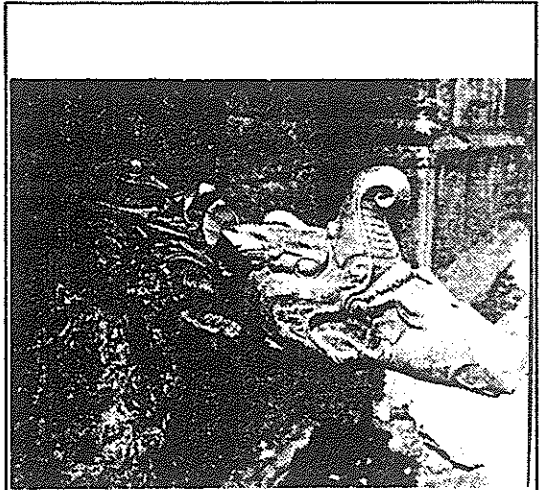
The International Services sector has, in the past year, proceeded and progressed on those lines. Activities undertaken and progress made are as under:

1. **THE TRADITIONAL WATERSPOUT - (DHUNGE DHARA) - PROJECT** (more fully reported at pg. 30 of this Issue) requires additional funding. But at the same time it is necessary to coordinate activities of various Government and non-Government organisations that are engaged in this very task. To this end, working closely with, another Patan Based N.G.O., "Lalitpur Heritage Group" (several Rotarians are also important office bearers of L.H.G) a Committee has been formed under the chairmanship of the Mayor of Lalitpur and this committee has representation from related Government and non Government Agencies.

Narayan Govind Halwai the Project Co-ordinator has been, as before, working hard on this project and we expect positive developments to follow.

2. Process of identifying a Club (Rotary) in a city or cities of rich cultural heritage, as is the case of Patan, was commenced. Contact was made and correspondence started with Rotary Club in Koln, Germany, where there is also a strong community of Nepalese. Follow up is required. Similarly follow-up letter was sent to Rotary Club of Taiwan; however, we are still awaiting a response. There is a

need for each member Rotarian (our Club) to follow up or commence dialogue/correspondence at a personal level with Rotarians/Clubs with whom there is personal contact. Such a sister-Club relationship may not be possible through official correspondence alone.



*Gilded brass Makara Spout on the Sundhara, Patan.*

*Rotary Club of Patan's Award Winning Project (Rotary International Award) aims at augmenting drinking water supply in the city and at the same time preserving a unique cultural heritage.*

3. This year two representatives from PRC visited Australia for the International Rotary Convention. The only two representing Nepal, (President elect Vijaya Bajracharya and Rtn Siddhi Shakya, made a good impression particularly as one of the Chief Guests, amongst more than 30,000 visitors, happened to be Peter Edmund Hillary an illustrious son of the



redoubtable Sir Edmund of Everest fame. Vice President elect Sagar S. Rana visited



*Foundation Stone Laying Ceremony of Proposed Hospital*

Poone at the invitation of Poona South Rotary Club. Senior Rotarian Gopal Rajbhandari from Kathmandu was the other participant from Nepal.

We are expecting a large contingent of more than half a dozen Rotarians to visit the meet R.I. Convention at Taiwan in 1994.

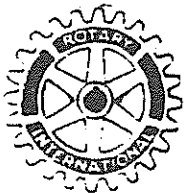
4. The Adult Orthopaedic Hospital, a major Project, (see pg. 18) has taken off this year. The Foundation Stone was laid in an impressive ceremony by Mayor of Kathmandu Municipality P.L. Singh and Rtn. Robb McLeod, Governor Canada/ U.S.A. RI District 7090.

5. The Fund to provide scholarships to deprived and deserving students (Classes VII-X) also finds special space in this Souvenir Issue pg. 28. The Fund was augmented further and will now benefit economically weak but bright 40 students in Patan.

6. The Income Generation (Goat Breeding) Project aims at improving the quality of goats in the village of Bhardev. An initial sum of Rs. 61,500 has been received for this challenging Project: for the first time RCP is venturing beyond the Valley of Kathmandu in our Patan District. For any conscientious social worker, reaching the poorest of our society is a worthwhile objective and the distance as well as remoteness of the area should provide added incentive as well as challenge to the Rotarians.

7. Our young Rotarian Bachan Gyawali, our youth Exchange Director, has initiated another first for the Club. Ms. Brandy Ann Daharonge from Rotary Club of Deer Easter Canada, is scheduled to visit and stay in Nepal for one year. She will be attending the Fine Arts College. Breaking the ice in any new area of service is always the most important step and we hope similar programmes will continue and increase in future.

8. Two young people were provided scholarship for training as Librarians, in Germany. Our special thanks is due to Ms Von Heide of Koln for her active support in this work.



BELIEVE IN WHAT YOU DO  
DO WHAT YOU BELIEVE IN

## ADULT ORTHOPAEDIC HOSPITAL IN JORPATI:

////// O Rtn. Bihari Krishna Shrestha //////////////////////////////////////

While the Rotary Club of Patan (RCP) since its installation seven years ago, has been consistently engaged in an increasingly large number and variety of vocational and community service projects, its latest undertaking, the Adult Orthopaedic Hospital at Khagendra Nava Jeevan Kendra (Khagendra New Life Centre) in Jorpati, Kathmandu is by far its biggest venture in this respect. It is going to be a 16-bed hospital for the medical rehabilitation of the physically handicapped adults for which no such facility exists so far in the country. The hospital represents a very important addition to the orthopaedic facilities that the hard and dedicated work of the two-decade old Nepal Disabled Association (NDA) has already created in the Kendra for the medical, vocational, social and educational rehabilitation of the physically handicapped children of the country.

The proposed hospital will have the following facilities: two wards for male and female patients separately, two operation theatres for septic and non-septic cases, one post-operation ward, one pharmacy, an administrative block and other essential facilities. The foundation stone has been laid jointly by the Mayor of Kathmandu Mr. P.L. Singh and the visiting Governor Mr. Robb Macleod of RI District 7090 at an astrologically auspicious moment on 2 June 1993. The construction is slated for completion in ten months in March 1994. The hospital building will also be filled with a TIME CAPSULE to be opened in 2055 A.D. to coincide with the One hundred and fiftieth Anniversary of Rotary International

**Rotarians: Partners in Service to Mankind**

The Nepal Disabled Association has felt the need for such a hospital in the country. It conceived of this project in the mid-Eighties and got a feasibility report prepared for the proposed endeavour by a Nepali consulting firm, Taec Consult (P) Ltd. in early 1988. The then Social Service National Coordination Council, an apex body under Her Majesty the Queen for NGO activities in the country, endorsed the proposal whole-heartedly and awarded a grant of 700,000 rupees in two installments which was also supplemented by a sum of 500,000 rupees from a Japanese donor. Despite the magnanimity involved in those grants, the resources were far too insufficient for the 32-bed hospital with all treatment and training facilities that the Association had dreamt of. Consequently, it decided to make a humble start by building a 6-bed ward instead, and to augment the facilities as resources become available.

It was at this critical juncture that Mr James P. Sinclair, Past President of the Rotary Club of Amherst South, NY, who was on an engineering consulting assignment to Nepal at that time, appeared on the scene. Both he and Anne Sinclair were impressed with the commitment and dedication of the Association and the former assured it of trying to mobilize resources for it back home and carried a formal request dated 27 June 1989. Things followed in quick succession thereafter. The Rotary Club of Patan not only decided to co-sponsor the ambitious project but also to provide what resources



6:00 PM: THE LAST OF OUR  
ELEPHANTS LEAVE THE  
NATIONAL PARK. *NATURALLY.*

Conservation begins with me.  
Help protect our natural heritage.



*Safari Narayani*  
Chitwan, Nepal

---

GPO Box 1357, Kathmandu, Nepal. Fax: (01) 521291

# Introducing Royal Orchid Plus

Only Thai offers you a  
Frequent Flyer Programme  
with so many pluses.

ROYAL  
ORCHID



Plus

## ENROL NOW AND TRIPLE THE PLUS

Get your mileage off to a flying start in more ways than one.

1. First, we'll reward your early enrolment by doubling your first award. Enrol before September 30th, 1993 and whichever Thai air travel award you choose, you'll receive a companion ticket for the same flights absolutely free.

2. We'll make it as easy as possible for you to get there, with a bonus 2,500 miles the first time you fly Thai after enrolling.

3. Plus, you'll literally see double on certain Thai routes until September 30th, 1993. You'll earn double miles on Business or First Class flights in either direction between Bangkok and Europe or Australasia, including an international connecting flight sector between Bangkok and any city in Asia. Plus any flight between Bangkok or Seoul or Tokyo and Los Angeles.

## ENROL NOW IN ROYAL ORCHID PLUS

Enrol in Royal Orchid Plus before September 30, 1993 and we'll reward you with double your first Thai air travel award.

Pick up an enrolment form from your nearest Thai office or simply complete this coupon and either mail it to Thai Airways International, Annapurna Arcade, Durbar Marg, Kathmandu, Nepal or fax it on 00977 (1) 221130. Allow 3 weeks for delivery.

Please complete in English.

Mr  Mrs  Miss  Other

Name

FIRST NAME

FAMILY NAME

Address

POST CODE / ZIP # CODE

COUNTRY

Phone

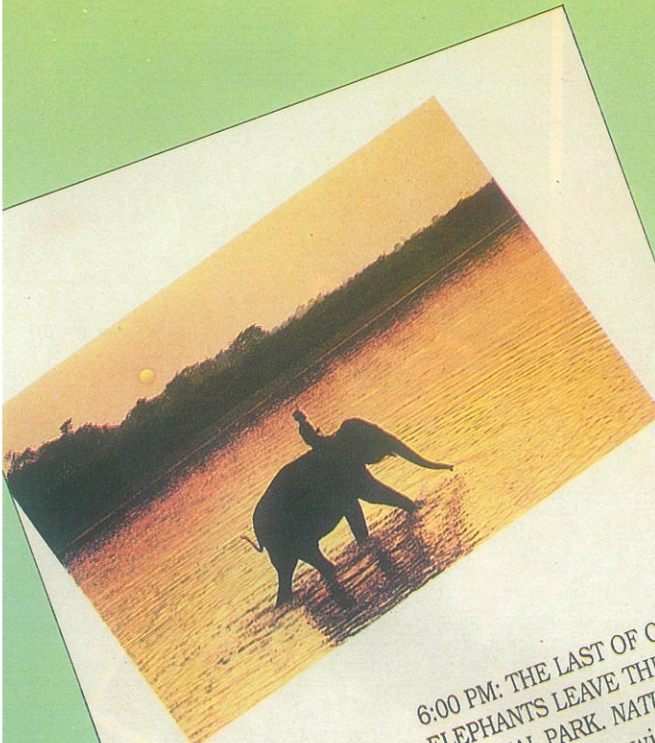
HOME

BUSINESS




For more information please call 223565, 224917, 221247, 225084, 224387 - or contact your Travel Agent.

IT IS ONE THING  
TO BLOW ONE'S  
OWN TRUMPET,  
BUT QUITE  
ANOTHER TO  
BE AWARDED  
FOR IT



6:00 PM: THE LAST OF OUR  
ELEPHANTS LEAVE THE  
NATIONAL PARK. NATURALLY.  
Conservation begins with me.  
Help protect our natural heritage.



**Safari Narayani**  
Chitwan, Nepal  
GPO Box 1357, Kathmandu, Nepal. Fax: (01) 521291



AMERICAN EXPRESS TRAVEL RELATED SERVICES  
An American Express Company  
Working together for a better environment

AMERICAN EXPRESS AND THE INTERNATIONAL HOTEL ASSOCIATION

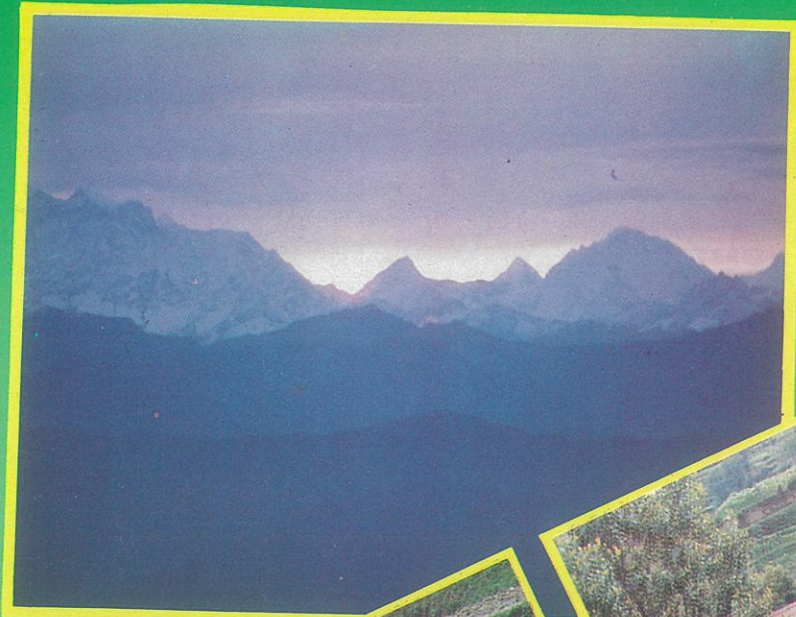
*Diploma of Merit*  
1992

Presented to  
**Safari Narayani**  
on 14th October 1992 at the Dhaul Tibani Hotel, Dhangadhi, in recognition of a contribution towards preserving and conserving the environment.

Presented by  
*[Signature]*  
President, IHA

*[Signature]*  
President, American Express Travel Related Services International

Partnership for a better environment



## **NAGARKOT COTTAGE**

*takes the pleasure of inviting you to  
experience the simplicity of village life and  
Nature's splendour of Nagarkot.*

*Date:  
Time:  
Venue:  
R.P.V.P.*

*Open  
As per your convenience  
Nagarkot*

*Naraj Tours & Travels Pvt. Ltd.  
Ghanta Ghar, Durbar Marg, Kathmandu, Nepal  
Tel: 222532, 222014, 220001, 222906  
Fax: 977-1-221372, Nagarkot - 290863*

*MEDIA WORLD 211886*

A photograph of a pink lotus flower in full bloom, sitting in a white rectangular pot. Several large, green lotus leaves are visible, some partially obscuring the flower and others extending towards the top and left edges of the frame. The background is a plain, light color.

*On the occasion of the 8th Installation Ceremony of the*

**Rotary Club of Patan**

*our heartfelt congratulations to the newly elected  
Executive Council Members.*

*Plus our best wishes for your continuing  
good works for social upliftment.*

**SANPO INTERNATIONAL CORPORATION**

Kathmandu Liaison Office  
P.O. Box 3190  
Kathmandu, Nepal  
Tel: 521295  
Fax: 525417

Tokyo Head Office  
5-7-11, Toranomon  
Minato-Ku, Tokyo  
105, Japan  
Tel: 03-5401-7330  
Fax: 03-5401-2440



Mr. Siddhi Bahadur Shakya

## SIDDHI ART GALLERY

(BRONZE EXPERT)

SRI DURBAR MARG, PULCHOWK LALITPUR

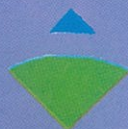
GPO BOX 1142 KATHMANDU,

PHONE: 521525, 526792, FAX: 977-1-525465





*Tomorrow  
Takes Shape  
Today*



**OBAYASHI OBAYASHI CORPORATION**

3,2-CHOME, KANDA TSUKASA-CHO  
CHIYODA-KU, TOKYO, 101 JAPAN.

TEL: TOKYO (03) 3219-9426

TELEFAX: TOKYO (03) 3219-9350

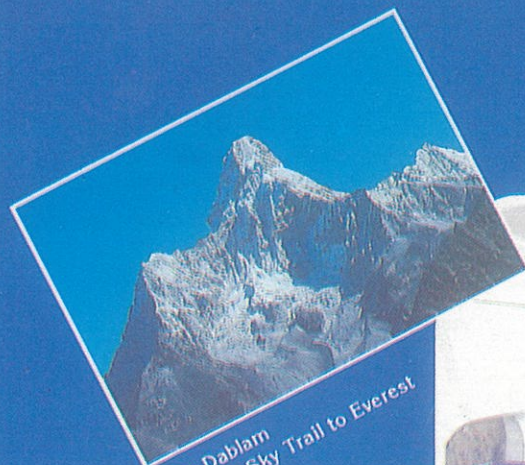
TELEX: TOKYO 222-4091 OBG TOK, J

KATHMANDU PROJECT OFFICE  
JHA-1-216, MAHARAJGUNJ  
KATHMANDU-3, NEPAL.

TEL: 417736 (OFF.)

FAX: 977 (1) 416629

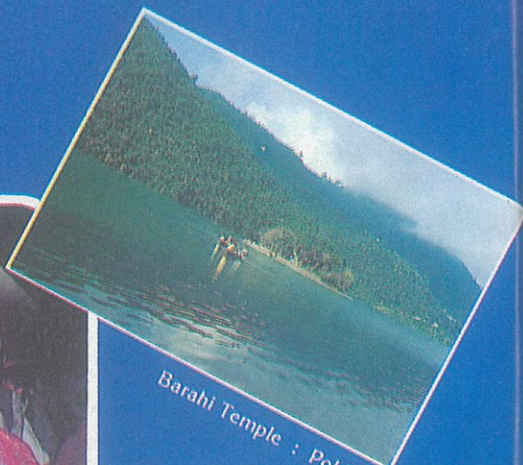
*Through our window.....*



Ama Dablam  
from the Sky Trail to Everest



Personalised Service  
Hallmark of Everest Air



Barahi Temple : Pokhara



Wildlife in Chitwan : Bharatpur



Gateway to Mustang : Jomsom

### See !

Everest, top of the world, on the famous and adventurous The Sky Trail to Everest. Kalligandaki, the deepest river gorge in the world on the way to Jomsom - deep in the Himalayas.

Lumbini (Bhairawa) - the birth place of Lord Buddha.

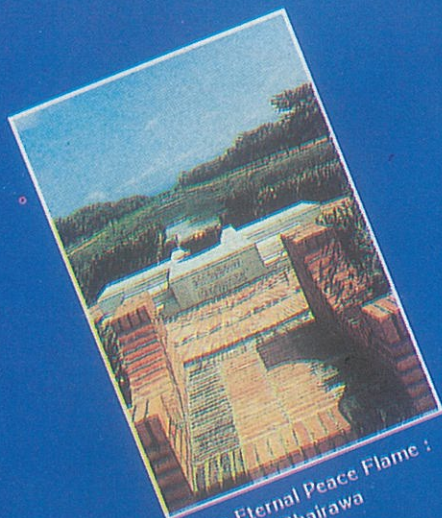
Pokhara - the valley of placid lakes & peaks. Bharatpur & Nepalgunj - gateway to Chitwan - heart of the jungle, and Royal Bardia Wildlife Park.

Jumla - gateway to the aesthetic RARA lake at the lap of beautiful Kailash and Kanjiroba peaks.

Annapurna and Dhaulagiri ranges on the Annapurna Air Trek, the mountain flight from Pokhara showing you the Western Himalayas.

Everest Air takes you to these places on its scheduled flights in modern German aircraft ensuring safety, reliability, comfort and personalised service.

Individual windows are guaranteed for each passenger.



The Eternal Peace Flame :  
Bhairawa

**EVEREST AIR**

*the airline of your choice*

3rd Floor, Singapore Airlines Bldg. P O Box 482, Durbar Marg, Kathmandu. Tel: 229412, 222290. Fax: 977-01-226795

it could for the purpose. A Memorandum of Understanding based on the Draft Project Prospectus received from Rtn. Jim Sinclair was signed on 24 October 1989 between the NDA represented by its President Professor Shankar Raj Pathak, the RCP by its then President Dr. Bhisma Raj Prasai, and Mr. Nandaram Bhakta Mathema on whose able shoulders the task of coordinating the ambitious project fell. This document became the formal basis for joint collaboration between the two Nepali Institutions and the Rotary Clubs of RI District 7090 for the fund-raising, design and construction of the proposed Jorpati facility which was adopted as a World Community Service Project by the District Council on 17 March 1990. The Rotary Club of Amherst South, NY and the Rotary Club of Hamilton AM, Ontario were designated coordinators for the fund-raising activities in the USA and Canada respectively on behalf of the WCS Committee of District 7090. The District 3290 Council itself with which RCP is affiliated, approved the project unanimously in February, 1990.

#### **Project Costs:**

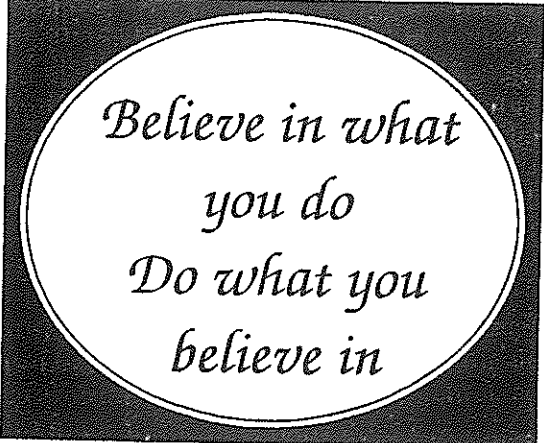
While the initial proposal was for a 32-bed hospital estimated to cost US\$ 565,000, it has since been scaled down to a 16-bed facility which is to cost US \$ 285,000. Of this amount, the RI District 7090 is to contribute US \$ 225,000 which represents a concerted contribution by over 50 Clubs in the District. The Rotary Club of Hamilton AM alone provided US \$ 45,000. The rest of the money, US \$ 65,000 is going to be jointly contributed by the NDA and RCP.

#### **An Important Monument of International Rotary Cooperation:**

The hospital once completed will always stand as a living example of international Rotary cooperation for alleviation of misery and destitution in the less fortunate societies around the world. Despite much advances made in the field of health as in

other sectors in the country during the last four decades of the country's development endeavour, the health status of the people of Nepal leave much to be desired. For instance, the Infant Mortality Rate is still above 100 per 1000 live births and life expectancy at birth is only 54 years. Curative and preventive health facilities are relatively still quite scanty and their quality also leaves much room for improvement. In terms the incidence of disability specifically, a 1980 study has estimated 3 percent of the total population to be disabled. And of the total disabled, 25.26 percent consist of adults (15 years and above) suffering from disabilities of limb, head, neck and spine. Given the country's population of 18.5 million in 1991, there are about half a million disabled people in Nepal of which 140 thousand suffer from the aforesaid physical disabilities.

Given such a difficult context, the establishment of the 16-bed Adult Orthopaedic Hospital at Jorpati, Kathmandu is destined to fill a big void in the country's health system. Therefore, it is only appropriate for Rotary Club of Patan to express its gratitude to RI District 7090 and particularly to Rotary Club of Amherst South, NY and its Past President Rotarian James Sinclair for their concern and generous assistance to enable the former to join hands with the Nepal Disabled Association and other donors to create this very important facility in Nepal.



*Believe in what  
you do  
Do what you  
believe in*

## PATAN ROTARY EDUCATION TRUST

### AN IMPORTANT SERVICE TO THE SOCIETY

○ Rtn. P. P. Prasai

The major cause of Nepal's backwardness is lack of education. According to Government figure the literacy rate is 37 percent (1992). Nepal virtually remained aloof and out of touch or contact with the rest of the world until 1950. People remained unfamiliar with the development of modern education that developed in the rest of the world. Going abroad for education even to India with whom we always had open border was not only discouraged but also restricted.

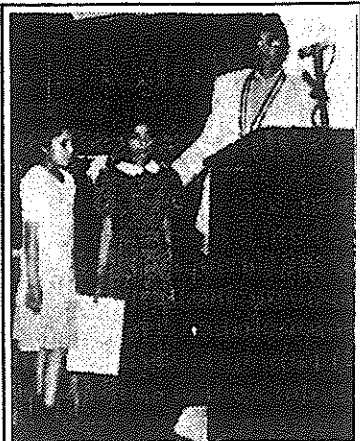
On one side this situation compelled Nepalese to concentrate on their traditional occupation mainly agriculture and on the other very high rate of the growth of population within and migration from outside mainly India and Tibet forced Nepalese to share their agricultural land causing economic deterioration. In 1950/51 when the political system in the country was changed through revolution, schools and colleges started opening and also country opened its doors for business with outside world. As most people were illiterate they had no idea or knowledge of any business, industry and trading. Together with political change businessmen from outside started pouring in and tapped almost all opportunities. Today almost all big industries, trading business, agencies, import/export, general merchandising belong to the outsider. The result today is that 70 percent Nepalese are living below the poverty line. Per capita income of Nepalese today is less than U.S. \$ 200. This scenario shows that it is impossible for Nepalese to afford to pay for their children's education.

Education is a high priority area for Nepal. Today, there are schools opened in almost every village, colleges in all districts and three universities. In spite of very limited resource the government is providing free education for primary level.

It is found that thousands of students after completing their primary education are compelled to discontinue their study due to their parents inability to pay the fee of the school though it is nominal - in most of the public schools the fee is around 50 cents U.S. These children most of them brilliant and genuinely keen to continue study further are found frustrated being deprived of schooling and wandering here and there looking for opportunity but what they have got - some are forced to beg, some wash dishes in local restaurants and kitchen, some run away from their places to cities in Nepal and India and are trapped by agents to make them work in factories and in private houses as servants. The most dangerous aspect is many of them are trapped by the drug dealers and some are forced to work as hawkers and pick-pocketing. On the whole, they not only bring ruin for themselves but also become a burden to the society.

One of the members of the Rotary Club of Patan brought this problem to the knowledge of the members in the club. Most of the members felt pity on them and were worried about the consequence.

In spite of the Club's heavy commitments of services - Thecho village drinking water project, Sipadole Multipurpose



**Earthquake Victims now being cared for by RCP**

income generating project and school building, Kavre village drinking water project, Khokana school building project, Stone Spouts Project (around 45 stone spouts rehabilitation/restoration for drinking water) project, Adult Orthopaedics Hospital Project, Dhapasi village income generating project, Martyrs' family support project, earthquake victims' children support project etc. - it was decided to dedicate the Club's services to this area, too.

Concept outline for the project was decided and over Rs. 30,000.00 was raised instantly. This was increased to Rs. 1,00,000.00 later with the support of a Nepalese Rotarian in USA. It was decided to put this amount in fixed deposit, and support 10 students from the interest of

this account. Each student was given a stipend of Rs. 100.00 per month from Class 7 to 10 (4 years). The principal amount remains in fixed account forever and the interest accrued is utilised. After 4 years the stipend goes to another student of Class 7. The process continues. The donor's capital fund is never touched. He is introduced to his student so that they have direct personal contact with each other. Yearly report on student is obtained each year and forwarded to the donor. The concept of the project is impressive and arrangements are satisfactory to the donors. More money was received from abroad and from members within the club in the second year. 20 more students were selected in the second year of the establishment of the trust. This is the third year and we should be in a position to grant stipends to at least 10 more students. This will make in total 40 students of Rotary Club of Patan.

One can perceive it is a good project and will expand considerably. There are possibilities that Rotary Club of Patan will sponsor in the near future hundreds of students and this service will reach to all districts of Nepal.

It is a matter of satisfaction to all members of Rotary Club of Patan to have contributed in their own little way to an extremely important service for their brothers and sisters in the society.

#### **ABOUT GOOD QUALITY OF MEMBERSHIP**

*"I have a few cows, fairly healthy" the speaker added modestly: in fact he does own some of the best in his District.*

*"When I acquire an animal, I closely examine its breed and ancestor, and not mine nor those of my friends; I check the shape and size and its record in particular. For a wrong choice can adversely affect the whole breed. When brought to my farm, she has to be trained and for proper diet and adequate movements.*

*A new member in your Club should be chosen with equal care, similarly cared for once he/she is a member so can he or she can make full contributions of potential capabilities.*

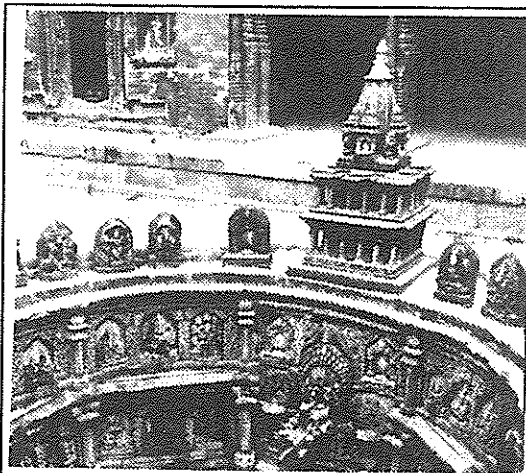
**Courtesy : H'ble Mr. Jagadish S.J.B. Rana - Rotary Governor, Simla District No. 3080  
(1985 - 86)**

## THE TRADITIONAL STONE WATER SPOUT REHABILITATION PROJECT

////// O Rtn. Narayan G. Halwai //////////////////////////////////////

**T**he Traditional Stone Water Spout Rehabilitation Project of Rotary Club of Patan (RCP) is a very imaginative project with a far reaching effect. In a limited local sense it will provide effective utility to

These stone spouts represent the rich cultural heritage as well as workmanship of that period. Water is brought to these stone spouts from a spring source through earthenware pipes or brick chan-



*Tushahity: Supply Source to be Restored.*



*Garuda Ornaments atop the Spout on the Tushahity.*

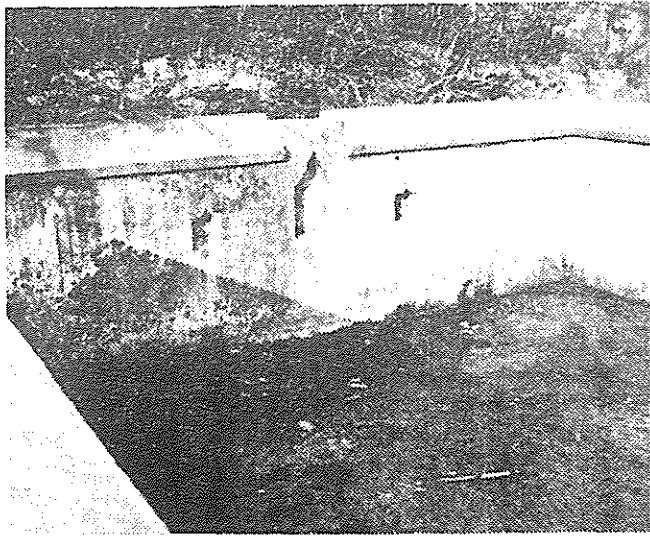
thousands of local people of Patan. But in a broader national perspective, it will boost up the psyche of the Kathmandu Valley itself, because these stone spouts (Dhunghe Dhara in Nepali) are the heritage of Nepal. These stone spouts are living examples of the ingenuity of ancient Nepalese Engineers and Architects, and are marvellous creations in themselves.

Before the introduction of piped water supply in Kathmandu valley, stone spouts and shallow wells were the only means of water supply for the local populace. Most of these spouts and wells were constructed by religious minded people at their own cost.

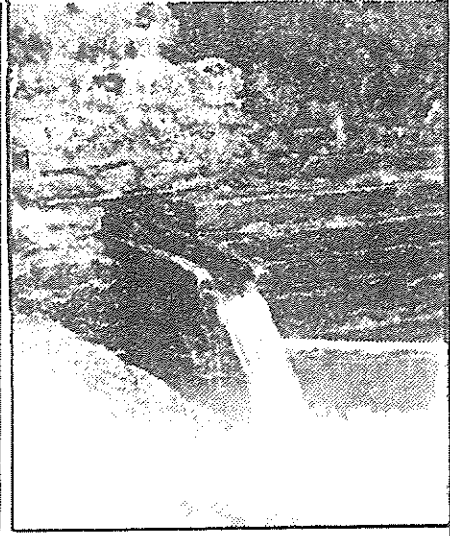
nel, about a kilometer long buried 2 to 6 m below ground level. Brick channel, at similar depth, drains the waste water from these spouts to an outfall about a kilometer away. Waste water from outfall is used for irrigation. The surrounding area of spout is aesthetically decorated.

These stone spouts and shallow dug wells are fed by shallow ground water. There were arrangements for replenishing ground water with the construction of large ponds scattered in the town. These ponds store the flows of storm water and Royal Canal, known as Rajkulo and augment ground water storage.

With time these stone spouts, wells



*Nahity: Spouts submerged and Stagnant Pool owing to Clogged Drain.*



*Nahity Rehabilitated, Clean Water Flowing at 2 litres per Second.*

and ponds were neglected and lacked care and maintenance. Only few spouts are operational these days and others are dry. Most of the wells are not in use. Buildings have been constructed on lands once occupied by large ponds and Royal canal system. The supply and drain channel systems of spouts were mostly disturbed by recent sewer laying, others were disturbed by earthquake and collapse of soil into the channel. Unrestricted pumping of ground water by the Water Supply Corporation and private parties, deforestation in surrounding areas, disappearance of ponds and substantial increase in build up areas are depleting ground water sources and resulted in drying of stone spouts and

wells.

There are 34 known recorded stone spouts in Patan urban area. Only 10 of them are presently in use, 8 of them are completely dry and others just trickle. These running spouts are supplementing the Corporation's supply to a great extent.



*Discussions with Beneficiaries*



*Restoration Works Underway*

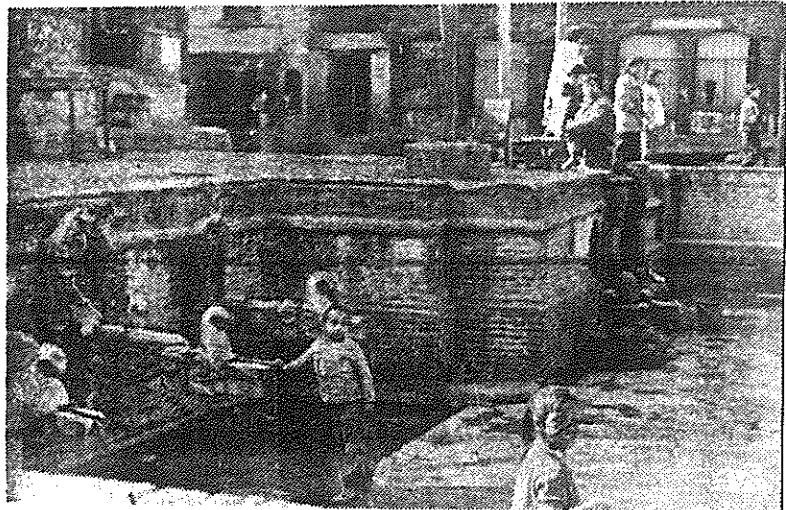
In the context of present water scarcity, increase in population and industries and absence of any systematic plan and Government's policy for development of new water sources in near future, acute water shortage in coming years is inevitable. It is high time to mobilise resources for the reconstruction of these traditional stone spouts so that the consumers could be sure of few more GAGRIS (a local water carrying vessel) of water to supplement the Corporation's supply.

Reconstruction of stone spout is to explore, locate and protect supply source from pollution wherever possible, restore supply and drain chan-

nel by cleaning or replacement with HDPE/ or RCC pipes to avoid any contamination if necessary, construct small tank to collect night flow for supply to dry spouts and other use and minor repair of spout surrounding. Drain channel if replaced will provide additional drainage system to the area as well.

Starting from its inception, Rotary Club of Patan had keen interest on these stone spouts and had adopted a stone spout in its Club Banner. The stone spout in the Club banner has water pouring out, but in reality most of stone spouts are dry. So the Club started investigation on these dry stone spouts to see if anything could be done to make them run again and supplement the chronic shortage of municipal drinking water.

Rotary Club of Patan started a campaign to make the local populace aware of it and its potential. Preliminary study was carried out with gratuitous help of a local consultant Multi Disciplinary Consultant (P) Ltd. With seed money contri-



*Supply Line and outflow drain to be restored.*

bution from members, RCP launched the project. More funds are being explored.

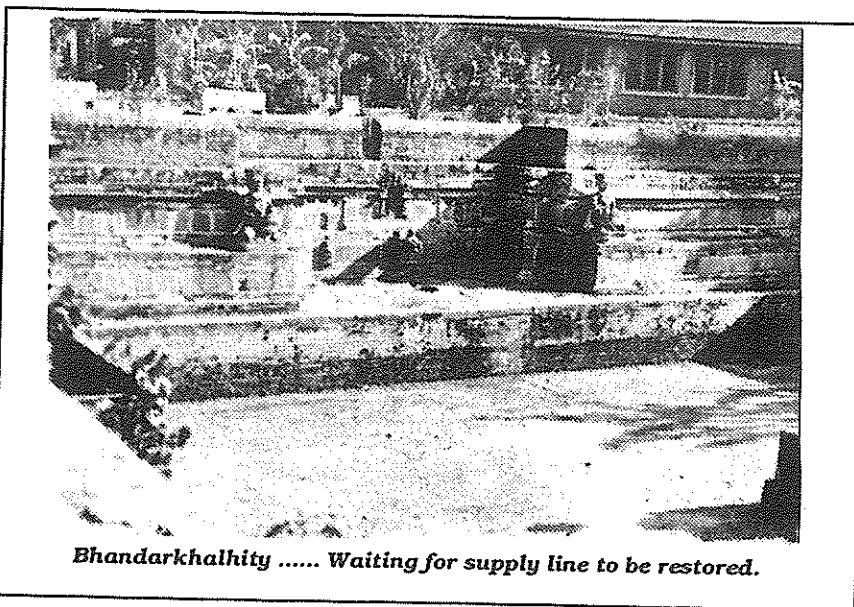


This Project was registered with World Community Service, WCS No 3688 (3290) - 1991. Rotary Club of Patan is mobilizing the resources for implementing the reconstruction work.

RCP undertook works on two stone spouts, one at Ward no 6 Naricha and other at Ward no 5 Lagankhel with fund from Rotary Club of Alice, Australia, the support of Nepal Water Supply Corpora-

ordinary public tapstand to serve at least 10,000 local population. A total of \$ 6,000 was spent.

RCP plans to go about this work slowly but steadily. It plans to take up one or two spouts at a time with available fund. Rotary Club of Patan plans to undertake other five dry stone spouts, namely Tushahity at Sundari Chowk and Bhandarkhalhity at Royal Garden of Patan



tion and contribution of local residents. 5 member construction committee formed with the advice of local people is responsible for construction management and fund raising. Spout at Naricha was previously a stagnant pool due to blockage of drain outlet. Laying of 105 m of new RCC pipe drain, improvement to supply line with HDPE fittings and repair of spout surrounding were completed. The spout is now discharging 2 litres of clear water per second. Spout is now crowded by about 5000 users a day. New drain pipe also serves other houses en route. This spout can easily supply water to additional five to seven dry stone spouts and

Durbar. Golden spout at Sundhara, Sougahity at Sougal and Kanbalhity at Kanbahal. All these spouts have high cultural heritage, artistic values and tourist attraction. The plan includes improving supply lines to Sundhara spout and conservation of night flow into an underground tank for supply to other dry spouts. Preliminary estimate is US \$ 16,000.

RCP finds the task challenging and daunting. But the members of RCP are not deterred and going about it in a dedicated way. One new spout reopened means at least one thousand new happy faces in Patan. What more could one ask for !

## CLUB ACTIVITIES

During its history of last seven years, Rotary Club of Patan has undertaken the following Projects with resources mobilised internally and from external sources including a significant proportion of beneficiary participation.

S.N.	Project Description	Village/ District	Project NRs. '000	Main Contributor	Beneficiaries	Implemented Year
1.	School building, health post livestock and horticulture development under Sipadol Multi-purpose Project.	Sidapol Bhaktapur	500	South Asia Partnership Canada	1000 persons	1986-1990
2.	Mulpi Water Supply Project	Mulpi/Kavre	100	RI district 3290	2000 persons	1989-90
3.	Expansion of Four bed for poor TB patients at Kalimati Chest Hospital.	Kathmandu		Sesojiya RC Japan		1988-89
4.	Equipment for disabled persons through Nepal Disabled Association	Kathmandu		Sesojiya RC Japan		1988-89
5.	Indrayani School Building Construction	Khokana Kathmandu	500	Rtn. Ranjit Ratnaike Australia	200 Students	1987-91
6.	Polio Eradication under Polio Plus Programme	Nationwide		Rotary Int'l		1987-present
7.	6500 litre water tank	Thecho Lalitpur	26	Rtn. J. Sinclair Canada	1000 persons	1988-1989
8.	Bus Stand Shed	Thecho Lalitpur	9	Club Members	1000 persons	1989-90
9.	Balodaya Primary School Building Extension	Dhapakhel Lalitpur	91	Club Members	80 students	1990-91
10.	Support to Martyr's Family	Lalitpur Municipality	150	Akita Amori RC, Japan	4 families	1990
11.	Clothes for Earthquake Victims	East Nepal	250	Japanese citizens		1988
12.	Financial Support to Earthquake Victims	East Nepal	51	Club members		1988
13.	Jawalakhel Environmental Improvement Project	Lalitpur Municipality	20	Club Members		1988-89
14.	Guardianship of two Orphans from Earthquake Affected Areas.	Dopakilo Terathum	100	RI District 2540, Japan	2 girls	1988-present
15.	Establishment of AWON Library	Lalitpur Municipality		American Women of Nepal		1986-87
16.	Support for running Health Post at Geutol	"		Club Fund	100 families	1988-91 1988-present
17.	Support for running Health Post at Nagal	"		"	"	
18.	Furniture distribution to school and health post	Thecho and Lalitpur Municipality	20	Hotel Narayani	1991	

19.	Training of lady doctor in Japan	Teaching Hospital. Kathmandu			1991
20.	Akchheswor Bihar Rehabilitation	Lalitpur Municipality	10	Club Members	1987
21.	Support to Aama Milan Kendra	Kathmandu Municipality	40	Club Members	1987
22.	Traditional Stone Spout Rehabilitation : Nahity : Lagankhel hity	Lalitpur Municipality	250	RC of Alice Spring, Australia	1991-92 1991-present
23.	Medical Equipment for Patan Hospital	Lalitpur Municipality	1122	Rotary Clubs of Australian and RI	1991-1992
24.	Ultrasonic machine and accessories to Amp Pipal Hospital	Gorkha	174	RI District 2050 RI	1991-1992
25.	Water Supply to Simal Bhanjyang Village	Pokhara Kaski	450	Rotary Clubs England and RI	1991-1992
26.	16 bed Adult Orthopaedic Hospital	Jorpati Kathmandu	13250	RI District 7090 USA/Canada	1993-present
27.	Clothes to Bhutanese Refugees	UNHCR Kathmandu		Yotuba RC Japan	1992
28.	Goat Breeding Project	Bhardeo Lalitpur	62	SAP, Canada	1992-present

## *Best Wishes*

*to*

**ROTARY CLUB OF PATAN**

*on the happy occasion of its*

*8th Installation Ceremony*

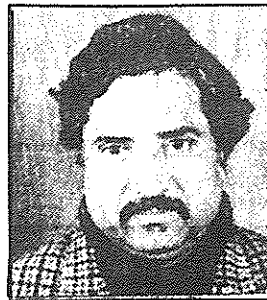
**OKURA & CO., LTD.**

**3-6 Ginza Nichome, Chuo-Ku  
Tokyo-104, Japan**

**Rotary Club of Patan  
EXECUTIVE COUNCIL  
1993-1994**



**PRESIDENT  
Bijay Bajracharya**



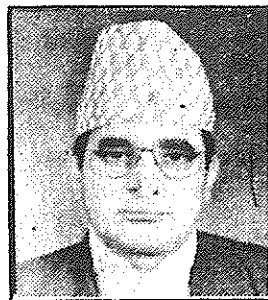
**IMMEDIATE PAST PRESIDENT  
Bishwa Kant Mainali**



**VICE-PRESIDENT  
Sagar SJB Rana**



**SECRETARY  
Narayan G. Halwal**



**TREASURER  
Chiranjibi Acharya**



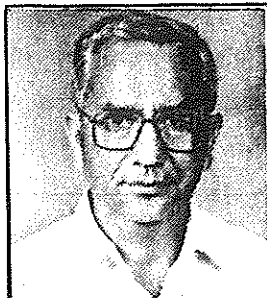
**DIR. CLUB SERVICE  
Vishnu Dhital**



**DIR. COMMUNITY SERVICE  
Bihari K. Shrestha**



**DIR. VOCATIONAL SERVICE  
Kamal B. Nyachhyon**



**DIR. IN'L SERVICE  
Kamal M. Dixit**



**JOINT-SECRETARY  
Dr. Chandra P. Maskey**



**SERGEANT-AT-ARMS  
Bachan Gyawali**

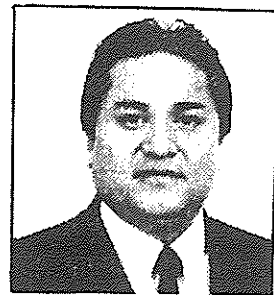
**Rotary Club of Patan**  
**CHARTER: 19.04.1985**



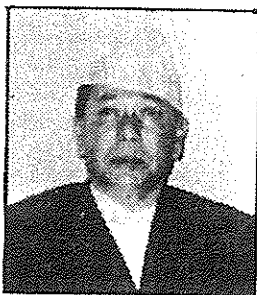
**AMATYA (Dr.) RAMCHHAYA MAN:** ENT Surgeon: Tribhuvan University Teaching Hospital, Maharajgunj, Kathmandu: Res. Kumaripati, Lalitpur: Ph. (O) 412303/2404 (R) 522360 : B. 3 Oct.: W. 9 Dec.: Ann. MEERA : Serv. D: 1988.



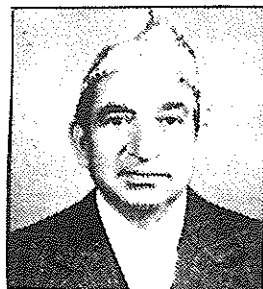
**ACHARYACHIRANJIBI** Audit-General: MC Traders, Kopundole, Lalitpur: Res. Lagankhel, Lalitpur-6: Ph: 522378: B. 10 Feb.: W. 8 Mar.: Ann. LALITA : 1992.



**BAJRACHARYA BIJAY (PHF)** : Jeweller : Gems Jewellery Industries (P) Ltd, Naya Baneswor GPO 1807, Kathmandu: Res. Shree Durbar Marg, Pulchowk-3, Lalitpur : Ph. (O) 212791 (R) 524586/526738 (F) 226822, B. 23 Aug.: W. 2 Mar.: Ann. RAJANI: Serv. D, VP : 1986.



**BAJRACHARYA (Dr.) HOM RAJ (PHSM):** Medical-Acupuncturist: Patan Clinic, Chhaya Bahal, Lalitpur-21 : Ph. 521559: B. 16 Aug.: W. 24 Feb.: Ann. Dr. DHUWAN: Serv. D, VP, P : 1986.



**DHITAL VISHNU PRASAD:** Food and Agricultural : Shree Durbar Tole, P.O. Box No. 41, Lalitpur, Nepal: Res. Shree Durbar Tole, P.O. Box 41, Lalitpur, Nepal: Ph. (R) 521024 (F) 521013 B. 15 Apr.: W. 16 Feb.: Ann. VIJAYA LAKSHMI: 1992.



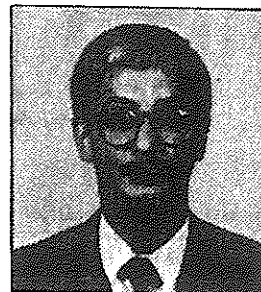
**DIXIT KAMAL MANI:** Sr. Active (Belles Letters): Madan Puraskar Pustakalaya, Sri Durbar Tole, Lalitpur : Ph. (O) 521014 (R) 521889 (F) 521013 : B. 2 Sept.: W. 11 June: Ann. ANJU: Serv. D, SA, DCM: 1986.



**GYAWALI BACHAN:** Tourism Marketing Hotel Oasis, Pulchowk, Lalitpur: Res. Shree Durbar Tole, Patan Dhoka, Lalitpur: Ph. (O) 525015 (R) 524138 (F) 521291 : B. 26 Dec. W. 4 Apr.: Ann. BHAVANA: 1992.



**GYAWALI CHANDRA SHEKHAR (PHSM)** : Hotelier : Hotel Narayani, Pulchowk, GPO Box No. 1357, Kathmandu: Res. Sri Durbar Tole, Pulchowk, Lalitpur: Ph. (O) 521711/1442 (R) 521311. (F) 521291 : B. 14 Nov. W. 20 Jan.: Ann. BULU: Serv. VP: 1986.



**GYAWALI LOCHAN:** Trekking Agent: Nepal Trek House, Patan Dhoka, Lalitpur : Ph. (O) 522871/5018/5018 (R) 521311. (F) 521291. B. 12 Nov.: W. 30 Jan.: Ann. SANGITA: Serv. SA: 1986.



**HALWAI NARAYAN GOVIND** : Civil Engineer : Multi Disciplinary Consultants (P) Ltd., Kopundole, GPO Box 5720, Kathmandu : Res. Thasikhel, Lalitpur-5: Ph. (O) 523103/ 5076 (R) 521364; (F) 523103: B. 4 Oct.: W. 10 June: Ann. **MUNU**: Serv. SA, D,S: 1987.



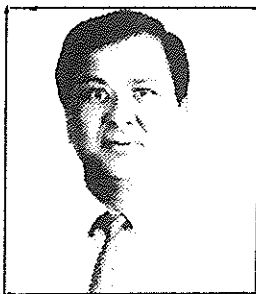
**KAYASTHA MATSENDRA LAL (PHF)** : Architect: Mr. & Mrs. M. L. Kayastha & Associates, Chandralaya, Kopundole, Lalitpur-1: Ph. (O) 523758 (R) 524758: B. 25 May: W. 7 July: Ann. **CHANDRALEKHA**: Serv. S, P: 1986.



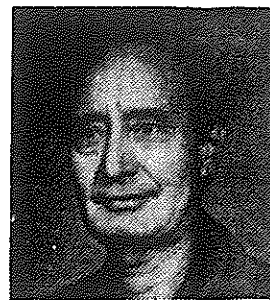
**LAKHEY SURESH CHANDRA** : Economist: UNDP/ILO, POB 107, Lalitpur: Res. Sanepa, Lalitpur-1: Ph. (O) 414550 (R) 521399: B, 15 Aug.: W. 11 May.: Ann. **JANAKI**: Serv. D: 1986.



**MAINALI BISWA KANT**: Legal Consultant : Mainali Law Office, Ram Shah Path, GPO Box 1669, Kathmandu : Res. Ram Shah Path, New Plaza, Kathmandu: Ph. (O) 228025 (R) 416119 : B. 15 July: W. 7 July : Ann. **SABITREE** : Serv. S, D, VP,P: 1986.



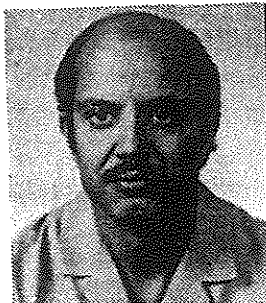
**MASKEY (Dr.) CHANDRA PRAKASH** : Urological Surgeon: Tribhuvan University, Teaching Hospital, Maharajjung, Kathmandu: Res. Sanepa, Lalitpur : Ph. (O) 412303 (R) 522688 : B. 15 Sept.: W. 10 Oct.: Ann. **JYOTSNA**: 1988.



**MATHEMA NANDARAM BHAGUT** : Sr. Active (Education Primary) : Res. 3/23, Pulchowk, Bakundole, Lalitpur, GPO Box 1543, Kathmandu: Ph. 523047 : B. 26 Apr.: Serv. D: 1987.



**NYACHHYON KAMAL** : Heavy Textile Mfg.: Mansu Industries (P) Ltd., Patan Industrial Estate, Lalitpur Res. 5/48 Lagankhel Lalitpur : Ph. (O) 522202/521891 (R) 521167 (F) 527167 : B. 15 Jan. : W. 15 Feb. Ann **SULOCHANA** : Serv T 1986



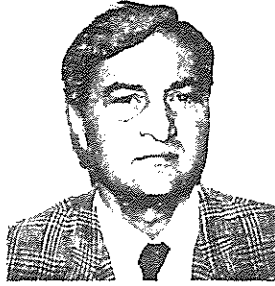
**PANDEY RABINDRA RAJ (PHSM)** : Airline GSA : Everest Express Tours & Travel (P) Ltd., Durbar Marg, GPO Box 482, Kathmandu Res. Sanepa, Lalitpur-1 : Ph. (O) 220759 (R) 521652 (F) 226795 : B. 16 Apr.: W. 19 Feb.: Ann **CHANDRALEKHA**: 1990.



**PRADHAN MADAV LAL** : Medical Technologist: Tribhuvan University, Teaching Hospital, Maharajjung, Kathmandu: Res Tahdhoka, Purnachandi, Lalitpur. Ph (O) 412404/303(R) 524700: B. 17 Dec: W. 10 Mar: Ann **MUNA**: Serv. D,P,S,D: 1986.



**PRASAI (Dr.) BHISMA RAJ:** Pathologist: Tribhuvan University Teaching Hospital Maharajgunj, Kathmandu: Res. Ka 1/47, Kopundole, Lalitpur: Ph (O)412404 (R) 521910 (F) 227372; B. 6 July: W. 17 Jan: Ann. **SUBHADRA:** Serv. D,P, DCM: 1986.



**PRASAI PRAJAPATI:** Travel Agent: Natraj Tours & Travels Pvt. Ltd., Durbar Marg, GPO Box No. 495, Kathmandu: Res: Kupondole, Lalitpur: Ph (O) 222906 (R) 525012 (F) 227372; B. 14 Jan: W. 1 Jan: Ann. **SHARADA:** Serv. D,VP,P,GGR:1986.



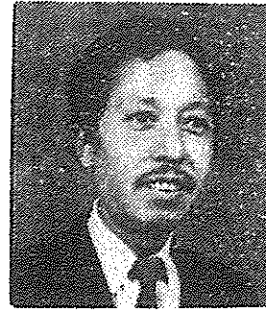
**RANA SAGAR SHUMSHER (PHSM):** Traditional Handicrafts: Nepal Traditional Crafts, 3, Pulchowk, Lalitpur, GPO Box 979, Kathmandu: Res. Kopundole, Lalitpur: Ph (O) 527916 (R) 521667 (F) 527871; B. 18 Feb: W. 18 June: Ann. **BRINDA:** Serv. D: 1987.



**SHAH RISHI:** Engineering Administrator: Secretary, RONAST, GPO Box 3323, Kathmandu: Res. Jawalakhel, P.O. Box 3459, Kathmandu: Ph. (O) 215316/965 (R) 525373 (F) 228690; B. 25 Apr: W. 23 Sept: Ann. **SULOCHANA:** Serv. SA, JS: 1990



**SHAKYA PUSHKAR MAN:** Carpet-Export: Carpet House/Naya Baneshwor, GPO Box 167, Kathmandu: Res. 480, Pulchowk, Lalitpur-3, GPO Box 167, Kathmandu: Ph. (O) 229231/214878 (R)521582/1335; B. 14 Jan: W. 27 Feb.: Ann. **RITA:** 1993.



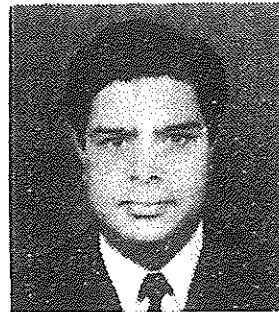
**SHAKYA SIDDHI BAHADUR (PHF):** Bronze Expert: Sri Durbar Marg, Pulchowk, Lalitpur, PO Box 1142, Kathmandu: Ph. 521525/6792 (F) 525465 B: 15 July: W 14 Feb.: Ann. **CHAITRA LAXMI:** Serv. JS,D: 1988.



**SHAKYA TIRTHA MAN:** Legislative Drafting: Secretary, Nepal Law Reform Commission, Jamal, Kathmandu: Res. 17 Hakha Tole, Lalitpur-12: Ph(O)221496(R)522467/526033;B 21 July: W. 14 Feb: Ann. **NANI SHOVA:** Serv: JS: 1990.



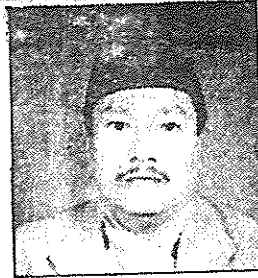
**SHAKYABANSHA NARENDRA NARSHING:** Sr. Active (Metal Caster): Mahaboudha Bidyadhari Shilpa Bhandar (P) Ltd, Patan Industrial Estate, Lalitpur, GPO Box 2330, Kathmandu: Res. 112, Mahaboudha, Lalitpur-12: Ph. (O) 521358 (R) 525856/1431; B. 15 Aug.: W. 15 Apr: Ann. **SANTA MAYA:** Serv. D: 1986



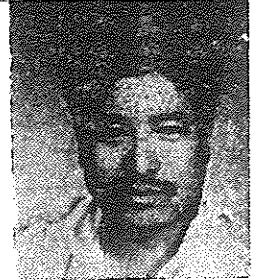
**SHARMA SURENDRA RAJ:** Consulting Economist: 152, Kopundole, Lalitpur-1: Ph. 521651; B. 2 Apr.: W. 20 Feb.: Ann. **SABITA:** Serv. PE: 1986.



**SHILPAKAR MOTIL LAL:** Wood Carver: Wood Carving Industries Pvt. Ltd., Patan Industrial Estate, Lalitpur, GPO Box 1264, Kathmandu: Res. Jawalakhel, Lalitpur: Ph. (O) 521366/5214 (R) 521447: B. 20 Jan.: W. 25 Apr.: Ann. **SHYAM LAXMI:** Serv. T: 1986.



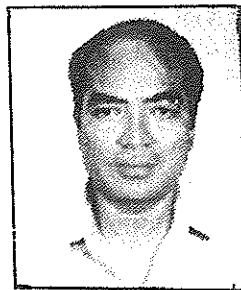
**SHRESTHA BIHARI KRISHNA:** Anthropologist: Chakupat, Patan Dhoka Lalitpur: Res. Chakupat, Patan Dhoka. Lalitpur, GPO Box 5720, Kathmandu: Ph (O) 522173 (R) 522173: B. July 26: Serv. D: 1992.



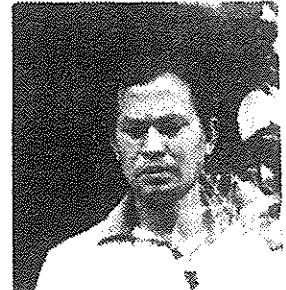
**SHRESTHA GANESH RAJ:** Rubber Recycling: Pashupati Rubber Industries: Patan Industrial Estate, GPO Box 1970, Kathmandu: Res. Sinchihity Lagankhel, Lalitpur, GPO Box 1970, Kathmandu: Ph. (O) 522157 (R) 524780: B. 22 Oct: W. 7 Jan.: Ann. **BIJAYA LAXMI:** 1993.



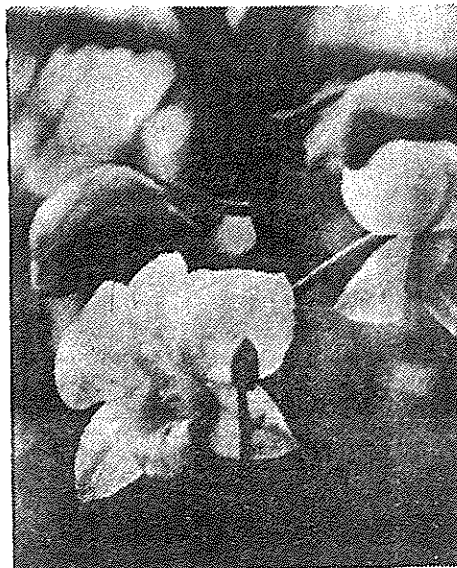
**SHRESTHA RENU:** Education Primary: Saheed Dharma Bhakta Primary School, Nakhu, Lalitpur, GPO 1669, Kathmandu: Res: Lagankhel, Lalitpur-6, GPO 1669, Kathmandu, Nepal: Ph. (O) 522239 (R) 525677: B. 12 Feb: 1992.



**SHRESTHASANTA KUMAR:** Liquor Manu- facture: Island Jungle Resort, Durbar Marg., GPO 2154, Kathmandu: Res. Dhobighat, Jawalakhel, Lalitpur: Ph. (O) 225615/220162 (R) 521745 (F) 223814 B. 5 Nov.: W. 3 May: Ann. **NIRMALA:** 1992.



**THAPA DHRUBA:** Carpet Mfg.: Narayani Carpet (P) Ltd. Hotel Narayani Show Room, Pulchowk, Lalitpur: Res. 4/159, Jawalakhel, Lalitpur: Ph. (O) 521442 (R) 524999: B. 22 Apr: Serv. T: 1986.



*With  
Compliments*

**ORCHID LAND**

GODAWARI

P.O. Box 1807, Kathmandu, Nepal

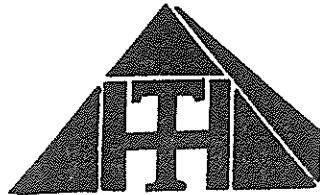
Phone: 212791, 226822, 215477

Fax: 977-1-226822



*Remember us for*

- *Safari Tent*
- *Field Tent*
- *Resort Tent*
- *Samiyana + Sayar*
- *Tarpauline*
- *Ground Sheet*
- *Canvas*
- *Bags*
- *etc + etc*

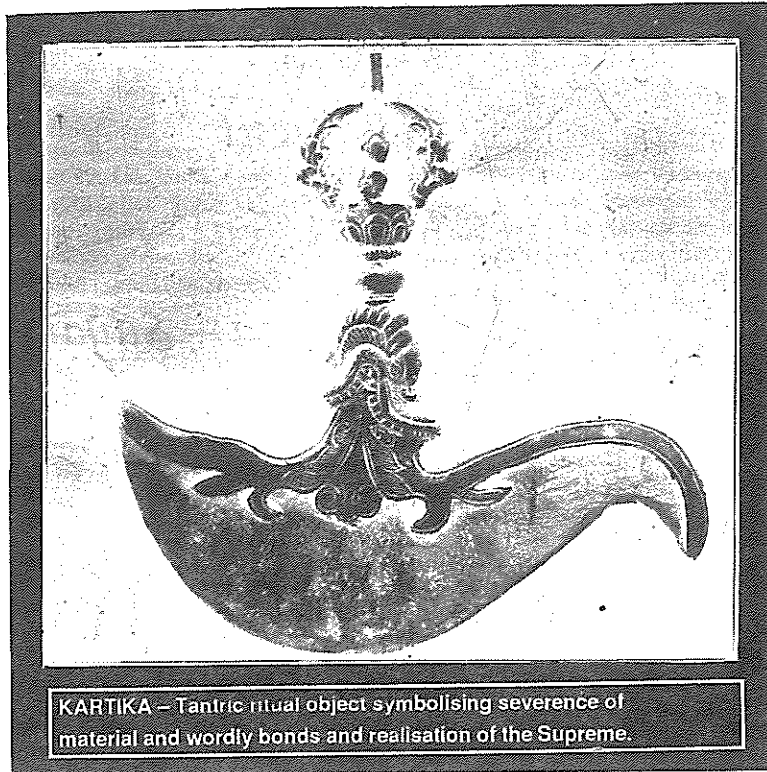
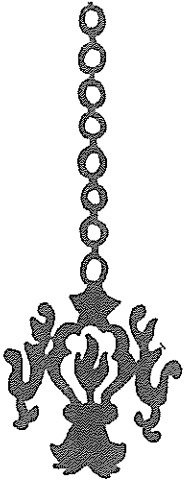


**HIMAL TENTS (P.) LTD.**

PATAN INDUSTRIAL ESTATE, LAGANKHEL, LALITPUR, NEPAL.

TELEPHONE: 527202, 521167. FAX: 977-1-527167

NEPAL  
*TRADITIONAL*  
*CRAFTS* PVT. LTD. EST 1964



KARTIKA – Tantric ritual object symbolising severance of material and worldly bonds and realisation of the Supreme.

MANUFACTURERS & EXPORTERS.  
SPECIALISING IN SILVER JEWELLERY  
CHRISTMAS ORNAMENTS  
RITUAL OBJECTS  
FIGURINES & OBJECTS DE' ARTS.

*Exports of*  
**NEPAL**  
WINNERS OF LARGEST  
EXPORTER AWARD

FOR EXPORTS AND WHOLESALE  
KUPANDOLE HEIGHTS LALITPUR  
G.P.O. BOX - 979, KATHMANDU, NEPAL.  
TEL: 527916, 523608.  
TLX: 2322 BLUSTAR NP  
FAX: 977-1-527871.

*Heartiest Felicitation on the  
Happy Occasion  
of  
8th Installation Ceremony  
of  
Rotary Club of Patan.*



**SAMBU CONSTRUCTION CO. LTD.**  
**GENERAL CONTRACTOR**

8-1, NAM CHANG-DONG, CHUNG-KU  
SEOUL, KOREA.  
TELEPHONE: 750-3900/28  
CABLE ADDRESS: SAMBU CONST, SEOUL  
TELEX: SAMBU K28318

KAMALADI GANESH, KATHMANDU  
NEPAL  
P.O. BOX 1616, TEL: 221875, 221395  
FAX. NO. 977-1-2-26643



## Gems & Jewellery Industry

Manufacturer, Exporter, Importer of  
Arts Crafts and Jewellery

### Mailing Address

P.O. Box 1807, Naya Baneshwor, Kathmandu, Nepal.

Tel: 212791, 226822, 524586, Fax: 977-1-226822

Tokyo - Fax: 03-3460-3512

Show Room: Pulchowk - 3 Patan Sri-Durbar Marga

