



LALIT DHARA SOUVENIR ISSUE

# ROTARY

DISTRICT 3290,  
CLUB NO. 23126

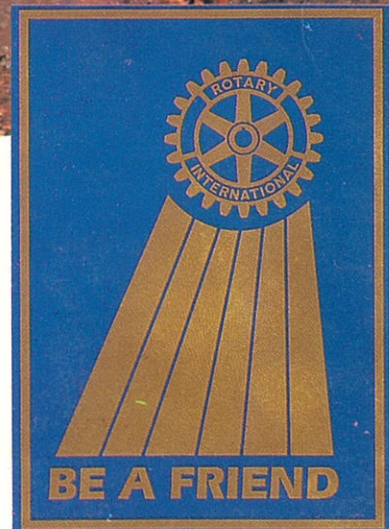
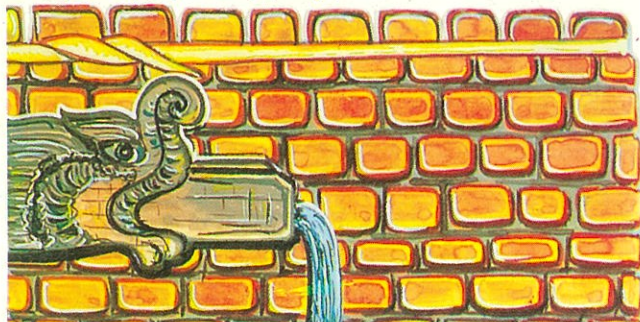
*GRS*

## CLUB OF PATAN

*9th Installation Ceremony*



ललित धारा







WITH BEST  
COMPLIMENTS

# *ORCHID LAND*

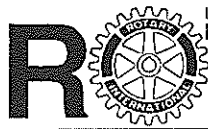
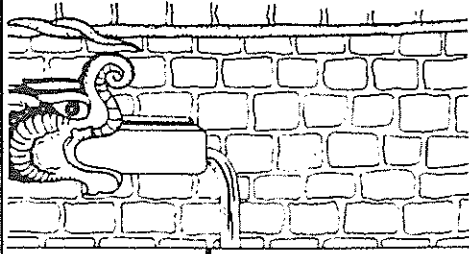
GODAWARI

**CONTACT:**

P.O.BOX: 1807 KATHMANDU, NEPAL.

PHONE: 212791, 226822, 215477

FAX: 977-1-226822

**CLUB OF PATAN****CONTENTS**

Message from Amit C. Majumdar	2
Moving Ahead in Unision <i>Sagar S. Rana</i>	3
Rotary Club of Patan 1993 - 94 At a Glance <i>Bijaya Bajracharya</i>	4
Secretary's Report <i>Narayan G. Halwai</i>	5
Rotary Club of Patan 1993 - 94 Club Service <i>V.P. Dhital</i>	7
A. Guest Speaker's and Speeches	9
Community Service 1993 - 94 In Retrospect <i>Bihari Krishna Shrestha</i>	11
Vocational Service 1993 - 94 <i>Kamal Nyachhyon</i>	13
इन्टरनेशनल सर्भिसको तर्फको प्रतिवेदन १९९३-९४ <i>कमल मणि दिक्षित</i>	13
Treasurer Tips <i>Chirinjibi Acharya</i>	14
The Inner Wheel In The Making <i>Anne Chandralekha Kayastha</i>	14
Rotary Foundation and Paul Harris Fellow	17
District Committee Members From RCP	19
1994 - 95 Executive Committee...	21
Members of Rotary Club of Patan	22
New Members	23
We Remember	25

**Co-ordinator**

Rtn. Pushkar M. Shakya

Rtn. Bihari K. Shrestha

**Published by:**

Rotary Club of Patan

**Layout design by:**

Kiran Shrestha

**Typesetting by:**

Media Vision

Kopundole, Lalitpur.

Phone: 216603

**Cover Photo by:**

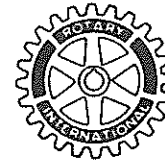
Pradeep Shakya

## EDITORIAL NOTE

**I**t is a matter of satisfaction for the Rotary Club of Patan to be able to come out with still another Souvenir Issue on the occasion of the Installation of our new Club President, Rtn. Sagar Shumsher JB Rana for the year 1994/95. The first such issue was put out last year for similar occasion and we hope that we can continue this as our Club tradition into the future.

This Souvenir Issue is intended not only as a commemorative publication. It is also designed to provide an opportunity for all the fellow members of the Rotary Club and those of the Inner Wheel Club to objectively assess our collective performance during the past year in the light of the ideals for which the International Rotary Movement stands. To that end, all the office bearers who served during 1993/94 and the President of the Inner Wheel have made contributions to this Issue each of which summarized the achievements (or lack of them) in their own sectors during the year. It is believed that all those articles together would provide us with a more focussed sense of direction for the coming year which is expected to be conveyed by the contribution of the incoming President.

We wish all the Rotarians and the members of the Inner Wheel a more fulfilling year ahead.



## ROTARY INTERNATIONAL

MESSAGE FROM AMIT C. MAJUMDAR

District Governor Nominee (1994-95)

RI District - 3290

Dear Sagar

In a few days from now you would be taking over the leadership of your club. Please accept my heartiest congratulations on this special occasion. While assuming this responsibility, you will also have the pleasure and privilege of giving new directions to the club activities and also to your fellow Rotarians.

You will discover that, as Rotarians, we grow in stature when we give our time and talents to improve the life for someone; and when we give dignity to someone else, we grow in dignity ourselves. Therefore, the desire "to serve" remains as one of the basic needs of the men.

On this occasion of your installation as the President of the club along with the new team of office bearers, all will get the opportunity to rededicate themselves in our common belief in Rotary ideals and human values. Always support and foster this common belief as you serve your club and community in all the avenues of service.

I am confident that with your able leadership, the club will make effective contribution to improve the quality of life in the community and help in furthering the understanding among fellow beings renewed strength and vigour.

Ruchira and I wish all the success for the function.

Yours truly,

(AMIT C. MAJUMDAR)

## MOVING AHEAD IN UNISION

**A**fter eight years of our existence Rotary Club of Patan (RCP) can claim many achievements in each of the four fields of Rotary services : Community, Club, International and Vocational. But for me the most pleasant experience in the club has been the fellowship and commaderie that we have enjoyed. This congenial atmosphere has helped us draw prominent leaders engaged in varied occupation and professions in the fold of our family of RCP and built a strong base from which we can launch in unision into the main objective of Rotary : to encourage and foster the ideals of SERVICE as a basis of worthy enterprise.

The Club has also decided that in order to mobilize these diverse contacts and capabilities of our members more effectively, we should set up a regular administrative support system. And members have agreed and are committed to contribute to this end. A concrete proposal with specifics of responsibility, linkages and budgeting has been prepared and distributed to members and it is hoped that we can start to function with this added back up by the beginning of August.

RCP has also built a tradition of choosing a new leader, the President, each year. I am proud and privileged that this honor has been bestowed upon me this year, and I must and shall take up this responsibility seriously.

This practice of selecting a new President each year encourages new talents and ideas to flourish. But there is an inherent danger of lack of continuity. Therefore, my priority for the year would be:

**Continuity and Consolidation:** Some of our ongoing projects are subsantial, in terms of financing, scope and /or complexity. We are working in collaboration with Nepal



*Sagar S. Rana. President 1994/95*

Disabled Association and R.I. District 7090 (U.S.A./Canada) in the Project of sixteen bed Orthopedic Hospital. The construction will be completed this year: the second phase, that of furnishing and equipping and the third phase of efficient operation will require a lot of drive and effort. The water-spout project is innovative and attractive, meeting as it does the basic need of drinking water, and conservation of one of our most unique cultural heritage; but it is also equally challenging. The education scholarship being provided (now to 28 students) has limitless possibilities of expansion.

We must now consider whether we can activate these projects most forcefully and implement more

effectively, if we join hands with other organizations / institutions that specialize in these development activities or services. Of course, we have our own Rotary Matching Grant and 3-H Grant: we need to pay special attention to these potential areas of support.

**New Avenues:** It will not do for us, to remain content with the ongoing projects alone. Indeed in the past year, members have expressed strongly their urge to seek new avenues to express their commitment to service; these views act as a stimulant to me. Addition of some exceptionally gifted, comitted and experienced new members in our ranks provide us with added strength and impetus.

Our District (3290) has set for us at least two functions as targets in each of the four categories of services for the year '94-'95, and listed specifics of 45 possible areas to choose from. I shall be disappointed if we do not double our target and achieve at least sixteen of these tasks - no only with a view to meet the District target but to satisfy ourselves that we are sincere in our commitment. This target of sixteen has not been set haphazardly but on the basis of the capability inherent in our membership, individually and collectively. Each of the function that "we" feel can be performed by the Club has been marked against the appropriate committee; the Directors will provide the necessary support and follow up.

**New Long - Term Projects:** I have not charted any course nor set specific targets in this area. I can, with confidence, throw the seeds of thought and idea in this fertile field of our members and trust that members shall come forward with

concrete proposals, backed by practical methodology and back up support.

**Team Work:** It is not difficult to make plans or to set targets. But, we shall require a cohesive effort and individual commitment to fulfill them. In order to build such a team work "we" the office - bearers and the four Directors have met several times in the past few months and have scheduled such a meeting twice a month for the future. For convenience, we have named this "Planning Monitoring & Co-ordination Committee" (PMC). The targets for the year have been worked out by the PMC in direct relation and linkage with choice of Chairperson or members in each committee. Similarly, we expect each Director to mobilize each committee and members in his service area to a similar concerted effort.

I would consider our achievements for the coming year successful, if we can instill this institutional approach for this and future years. And if we succeed here, I have full confidence that we shall succeed in each of the other two areas of priority: continuity and consolidation on the one hand and initiation of new services on the other.

Finally, let me quote Bill Huntley R.I. President 1994-95: "Let us have the vision to see, the vigor to act, the heart to care. To all those who wait, to all those who yearn, to all those who need, **BE A FRIEND.**"

## Rotary Club of Patan: 1993/94 at a Glance



**Bijay Bajracharya**  
President 1993/94  
Rotary Club of Patan

**T**he year 1993/94 has been a year of highly rewarding experience for me as the President of our Club for that year. It has provided me with a very valuable opportunity to associate myself more deeply with the Rotary pledge of Service Above Self. In concert with the very able office bearers of the Club I could participate in a number of welfare and development activities that our Club has initiated during the year or have been implementing from previous years.

The Rotary Club of Patan has taken up a wide variety of projects like supply of drinking water, repair of schools in the villages, financial relief during natural calamities, and income generating activities for rural people. We have also been giving over a dozen fellowships to poor students in different communities.

Under the Club Service activities we also had the honour of having many distinguished speakers who include the then Ambassador of Japan to Nepal, His Excellency Chuichi Ito and more recently, the Ambassador of the United States of America, Her Excellency Sandra Vogelgesang. Their addresses to the Club have been both inspiring and illuminating to the members as well as to the guests present on those occasions.

In other areas of Club activities we provided training in hotel kitchen management to a few trainees, thanks to the generous cooperation extended by Hotel Narayani. We also extended hospitality to a number of exchange students from abroad including Miss D. Brandy of

Canada who was here for a year under Rotary Youth Exchange programme. Eight members of the Club became Paul Harris Fellows including two Sustaining Members. A significant development in our bid to expand our international cooperation has been the recent conclusion of a Friendship Agreement between our Club and the Rotary Club of Osaka MIDOSUZI, Japan. I trust that over time, this agreement would blossom into a dynamic relationship between our two Clubs based on strong friendship, understanding and mutual cooperation.

Given the problems of our society, there is much more that our Club can and should do. As I pass on the mantle of Club Presidentship to the incoming President, Mr. Sagar SJB Rana, I do so with full conviction and satisfaction that the stewardship of our association now rests on the shoulders of a person superbly gifted to discharge the obligations of this important office. I for my part will remain ever ready for any cooperation I might be called upon to extend.

As I conclude, I would also like to express my heartfelt thanks to all the Board members as well as to the rest of the members of our Club for their immense support and cooperation extended to me during my tenure as President of the Club for 1993/94. I must also make a special mention of the effort and contributions made by the Club Secretary, Mr. Narayan Govind Halwai who spared no pains in properly ordering the Club records and acting as the backbone of the Club organization.

## SECRETARY'S REPORT

Narayan G Halwai



### *Introduction*

This Secretary's Report is intended as an objective evaluation of Club performance during my two years of tenure as Club Secretary. The duties of a secretary are to communicate the Club activities to RI District and Club members. These include timely submission of semi annual reports, Club dues and attendance records; and maintenance of agenda and minutes of meetings, membership record and documents of Club activities. However, this report also attempts to assess other Club affairs with a view to further upgrade its performance in future.

### *Executive Board*

While the executive members are elected unanimously, it is unfortunate that some of them are later unwilling to keep the post due to their preoccupations elsewhere and there are others who like to hold on to the post irrespective of whether they can or want to actively participate.

Board meetings (11 nos) were quite regularly held last year. But the members were often not well prepared to discuss Club policy, programmes and activities. These reflected the unfulfilled need to activate the executive members for the effective functioning of the Executive Board.

### *Committees and "Monday Rotarians"*

While the club has many subject specific committees were literally non-functional. The leadership within the Executive Board again failed to activate them. It seemed that Committees were formed only to meet RI requirements rather than as a commitment to promote Club activities. Such members have since been to kingly branded as MONDAY ROTARIANS whose seemed to feel obliged only to be physically present during the Monday meeting of the club. Its only benefit has been to improve individual and Club attendance and fellowship and little else.

We are Rotarians because we are leaders and active in our professions. So preoccupation in one's business cannot be a sufficient. Excuse to degenerate into being Monday Rotarians. Some of them are also preoccupied in other social welfare activities elsewhere and they have difficulty in committing themselves as active Rotarians. There is obviously a lack of sufficient motivation and Rotary awareness among them to rise and become Active Rotarians and Committee Chairpersons or Members.

### *Regular Meetings, Attendance and Fellowships*

Altogether 49 regular meetings were held last year. 2 Mondays were Pujya holidays. Average Club attendance in over 70%. Rtn Kamal Dixit, Rtn Vishnu Dhital and myself had been the only members maintaining 100% attendance. There are also Rotarians who regularly vanish from the meetings much earlier. Rotarians are also not aware of leave facilities when they are visiting places where attendance makeup is not possible.

17 Guest Speakers had delivered speeches on various national and current affairs. 10 Rotarians gave classification speeches on profession. 1 Anne spoke on her profession. There were 66 Guest Rotarians from Nepal Clubs and 5 from other countries. "Sunshine fund collection was about NRs 21,000". Generous hospitality were offered by President Bijaya Bajracharya and Rtn. R.R. Pandey and contributed to healthy fellowship they must be appreciated.

### *Resource Mobilisation*

Resources for Club activities consisted of sunshine collection, collection accruing from celebration of Rotarians happy events, advertisement in bulletin and funds received for Project execution. However the sunshine and other funds have largely remained unused. As such there is little effort for more resource mobilisation. Again the management has not been sufficiently serious to unwell the sense of commitment of the Rotarians. Some Rotarians even avoid the meagre sunshine contribution and meeting fee for their guests. However, Rotarians have been found to be positively disposed to sponsor advertisement and these could be further tapped for more resource mobilisation.

### *Club Administration*

Communication to RI, District and Club Members about Club activities is still at a bare minimum. Monitoring of project performance and subsequent documentation are also either unsystematic or non-existent.

Most of the executive members/Committee chairpersons/members have not shown sufficient interest to go through RI publication supplied to them, or to properly maintain the available materials for subsequent handover to their successors. The Club does not also have easily accessible space to store the Project documents and RI publication which the Rotarians could have consulted. These project documents and RI publications are useful tools to create Rotary awareness and activate the Monday Rotarians. These problems are common to all Clubs without their own building and are likely to continue for years.

The Club has to improve communication, prepare project documents, monitor the project performance and resource mobilisation, and inventory the project documents and RI publications. Most of the Rotarians in our Club do not have their own secretarial resource to undertake above administrative works. So, either the able Rotarians have to shoulder such administrative support or the Club has to provide its own administrative capability. Otherwise it is likely that the Club administration will suffer and deteriorate further against our will.

Four Avenue of Rotary Services are dealt with separately by concerned Directors and are not discussed here.

### *Achievements*

Various programs and activities were discussed during the year, but the completion of Adult Orthopaedic Hospital building at a cost of about US \$ 285,000. Publication of colourful Souvenir issue and uninterrupted publication of the weekly Club bulletin "Lalit Dhara" and sponsoring of five rural water supply projects have been some of the achievements of the year.



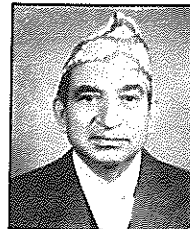
## **SIDDHI ART GALLERY**

**( BRONZE EXPERT )**

SRI DURBAR MARG, PULCHOWK, LALITPUR.  
GPO BOX: 1142 KATHMANDU, NEPAL  
PHONE: 521525, 526792. FAX: 977-1-525465



## ROTARY CLUB OF PATAN 1993 - 94 CLUB SERVICE



V.P. Dhital

Club service is considered to be the most important area of the Rotary activity on which the foundation of Rotary Service is built up. The club service Director is, generally, responsible for coordinating and supervising of various club service activities. They are (a) attendance, (b) classification, (c) club bulletin and magazine, (d) fellowship activity, (e) membership development, (f) membership retention, (g) Rotary extension, (h) programming, (i) public relation, (j) Rotary information, (k) designated month celebration and (l) club constitution and trust. At the District level District coordinator has to look after (i) interdistrict family exchange, (ii) inter city, seminar/workshop (iii) district meets, (iv) assistance to new and small clubs, (v) district fellowship and (vi) district awards. In certain clubs a special chief of Protocol is also appointed.

However, in the case of the Rotary Club of Patan, the club service activities are mostly confined in the fields of (a) attendance, (b) club - bulletin, magazine, (c) Rotary information, (d) Programming and (e) fellowship activities. These activities are taken up by three district committees viz (i)

attendance, (ii) club-bulletin, magazine and Rotary information and (iii) programming and fellowship.

Attendance at the Rotary Club of Patan is one of the best as it has always remained above 70 per cent several members having received 100% points. Most of the members are very regular and actively participate in the activities of the club. The club has considered this attendance as the key point of its survival and expansion. Although there have been a couple of bad demises accompanied by some unavoidable transfers these have been new additions also. The total strength, therefore, has all along remained at the level of 38-40.

Lalit-Dhara the weekly bulletin of the Club which is being regularly published has become one of the most important activities of the Club and it serves the triple purpose of Rotary Information, Magazine and to a large extent, entertainment as it invariably carries an amount full of humour. This bulletin has become important organ to disseminate the news of the club relating not only to the regular activities but also to the forthcoming programmes. It is

very attractive indeed and has a fairly wide circulation.

The Committee on Programming can really be proud of its activities as it has established a fine tradition of drawing up six monthly programmes, subject, of course, to amendments as and when necessary of guest speakers from both within and without the club.

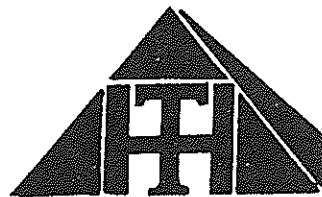
Club members speak mostly on their own classifications but the speaker from outside are carefully chosen from various fields: diplomats, academicians, journalists, social workers, artists, lawyers, thinkers and on rare occasions, politicians of higher echelon.

Our fellowship programme is taken care of by one of our very able past presidents. This activity, which, again, is one of the most important functions of the club deserve a special chapter on its own and the reader is advised to look at relevant pages of this souvenir.

The Rotary Club of Patan is one among the best in all its aspects with the result that it has received an attractive award from the Rotary International.

*Remember us for*

- *Safari Tent*
- *Field Tent*
- *Resort Tent*
- *Samiyana + Sayar*
- *Tarpauline*
- *Ground Sheet*
- *Canvas*
- *Bags*
- *etc + etc*



**HIMAL TENTS (P.) LTD.**

PATAN INDUSTRIAL ESTATE, LAGANKHEL, LALITPUR, NEPAL.  
TELEPHONE: 527202, 521167. FAX: 977-1-527167

## A. Guest Speaker's and Speeches

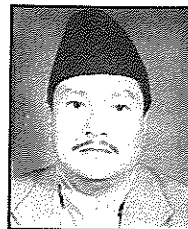
S.No.	Date	Guest Speaker	Speech Theme
1.	July 12, 1993	Mr. Krishna Pd. Bhattarai Chairman: SAARC Poverty Alleviation Commission	Social Service and Rotary Activities
2.	Aug 16, 1993	Mr. Lain Singh Bangdel Ex-Vice chancellor, Royal Nepal Academy	Nepalese Art & Culture
3.	Sept 6, 1993	Dr. Lok Raj Baral Professor Political Science Department, TU	Parliamentary Democracy in Nepal
4.	Sept 20, 1993	Mr. Madhukar G. Amatya President, Patan Jaycees	Youth Activities and Jaycees
5.	Aug. 18, 1993	Mr. Kunda Dixit International Press Service, Manila	International Press and Pakistan Election Coverage
6.	Oct. 5, 1993	DG Amitabh Bhattacharya RI District 3290	Rotary Activities
7.	Nov. 1, 1993	Mr. Utpal Chatterjee Refregeration and Air Condition Specialist	Airconditioning
8.	Nov. 8, 1993	H.E. Chuichi Ito Ambassador of Japan	Nepal and Japan Relation
9.	Jan. 10, 1994	Rtn. Anil Ghai Chairman Inter District Youth Exchange	Inter District Youth Activities
10.	Jan. 19, 1994	Mr. Bekha R. Shakya Mayor, Lalitpur Municipality	Municipality Development Programme, Achievement and Shortcoming
11.	Jan. 31, 1994	Dr. Jogendra Jha Past President, Rotary Club of Kathmandu	Rotary Awareness
12.	Mar. 7, 1994	Ms. Brandy Davouse Canadian Student, RI Youth Exchange Programme	Nepalese Experience
13.	Mar. 21, 1994	Dr. Mohan Man Sainju Ex-Vice Chairman, National Planning Commission	Planning in Nepal
14.	Apr. 25, 1994	Mr. Madan Mani Dixit Vice Chancellor, Royal Nepal Academy	Culture and Nationalism
15.	May 9, 1994	Mr. Keshab P. Kalle Ministry of Commerce	GATT and Nepalese Perspective.
16.	June 6, 1994	H.E. Sandy Vogelgesang Ambassador of USA	Role of USA in the development of Nepal
17.	June 20, 1994	Mr. Sushil C. Amatya Presidnet - Teacher's Association	Secondary Education System in Nepal

## B. Speech by Rotarians

S.No.	Date	Rotarian/Anne Speaker	Classification/ Speech Theme
1.	July 26, 1993	Rtn. Biswa K. Mainali	Law Practice in Nepal
2.	Aug. 9, 1993	Rtn. Chandra S. Gyawali	Hotel Management
3.	Aug. 23, 1993	Rtn. Pushkar M. Shakya	Carpet Manufacturing and Export
4.	Sep. 13, 1993	Rtn. (Dr.) Chandra P. Maskey	Test Tube Baby
5.	Oct. 11, 1993	Rtn. (Dr.) Ram CM Amatya Chairman, Community Committee	ENT Facilities
6.	Dec. 20, 1993	Rtn. (Dr.) Bhisma Prasai	Pathological Practice
7.	Dec. 27, 1993	Rtn. Vishnu Dhittal Director Club Service	Club Service Activities
8.		Rtn. Chirinjibi Acharya Treasurer	Club Financial Status
9.		Rtn. Kamal M. Dixit Editor, Club Bulletin	
10.	Jan. 24, 1994	Rtn. Prajapati Prasai Co-ordinator, Education Committee	Education Endowment Fund
11.	Feb. 14, 1994	Rtn. Rabindra R. Pandey	Airline GSA
12.	Feb. 21, 1994	Rtn. Bihari K. Shrestha Director: Community Service	Community Service Activities
13.	Mar. 28, 1994	Anne Chandra L. Kayastha Anne Mnuu Rajkamikar	Inner Wheel of Rotary Club of Patan
14.	Apr. 4, 1994	Rtn. Yagya B. Shrestha	Revenue Administration
15.	Apr. 11, 1994	Rtn. Bachhan Gyawali	Hotel Administration
16.	May 16, 1994	Anne Sulochana Shah	Carpet Manufacturing
17.	July 13, 1994	Rtn. Ganesh R. Shrestha	Rubber Recycling



## COMMUNITY SERVICE: 1993/94 IN RETROSPECT



**Bihari Krishna Shrestha**  
Community Service Director

**Introduction:**

The mandate of International Rotary movement has been the “general welfare of the community, nation and world”, and the community service sector itself has been described as the “heartbeat of Rotary” or the “Third Avenue of Service”. It anticipates the mobilization of “the talents and skills of each club member in activities that will provide visible benefits” to the community.

**Some community service activities of the Rotary Club of Patan:**

Cumulatively speaking, the Rotary Club of Patan (RCP) has undertaken a large number of projects in the past in the field of community service. Notable among them have been the provision of scholarship to needy students, community drinking water schemes in near and remote locations, rehabilitation of historic stone spouts in Patan, maintaining cold chain in sub-district health post, providing internal telephone system and ultrasonic and medical equipments to hospitals.

While these activities have been undertaken with RCP’s own resources supplemented by generous assistances from sister clubs in other countries, an ambitious project of building a US \$ 285,000 16-bed adult orthopaedic hospital in the Khagendra Nawa Jeevan Kendra (Khagendra New

Life Centre) complex is due for completion in the near future with a tripartite resource contribution from the RCP, the Nepal Disabled Association and the RI District 7090 of USA/ Canada, the last providing the major share of US \$ 225,000. In this connection it is necessary to pay sincere tribute to the contributions made by Late Rtn. Nandram Bhagut Mathema whose tireless persistence and dedication have gone a long way in realizing this mammoth venture of the Club.

In 1993/94 the RCP co-sponsored five drinking water and sanitation projects in different parts of Nepal which were funded by RI District 1150 of Great Britain and Ireland with a sum of 11,333 Pounds and Matching Grant of equal amount from the Rotary Foundation. The projects were executed by Water Aid through local NGOs. RCP is also in communication with Osaka Munami Rotary Club of Japan on behalf of the Bhaktapur Jaycees managed Community-based Rehabilitation Project for mobilizing resources for helping the disabled children of that town.

**RCP priorities in community service projects:**

While the Club has been undertaking and promoting development projects far and near, it decided to take a global view of the situation last year by acknowledging that:

- Despite its own on-going internal resource mobilization and occasional generous supports from sister clubs around the world, its resource capability for development projects relative to needs would essentially remain limited;

- Since at least half of the nation’s population remain in abject poverty, the Club’s activities should contribute, however modestly, to the alleviation of this major national problem; and

- The RCP projects must meet the criteria of sustainability and replicability and to that end, must be designed to promote self-reliance and maximum local resource mobilization.

It is within the framework of these policies that the RCP has undertaken to promote and support community service concerns such as literacy, health and sanitation, poverty alleviation, etc. Without such an explicit policy or conceptual framework for a locally sustainable approach, Rotary assistance to the communities could easily degenerate into something aggravating dependency instead.

**Two recent community service interventions of RCP:**

1. Working with local catalysts in Thecho:

Once adopted as the Club’s “Rotary village” Thecho is situated some 3 km. south of Patan, has a population

of 6,769 (1992) in 1109 predominantly Newar (Maharjan and Dogol) and some Chhetri households, and was once an industrial village that pressed mustard oil and exported to the consumers of Patan and Kathmandu until the demand for the dense oil declined due to competition from imported refined oil. Today six major carpet industries operate in the area.

Thecho also once earned the infamy of being called "casino" with several gambling dens hosting kaura playing with impunity. However, the increasingly conscious youth of the village organized themselves as a Social Reform Club and launched various activities to sensitize the community against the vice. With some effort they succeeded in stopping the Kaura playing and later, the dice playing which the den owners introduced on the alibi that only the former was banned. Other development projects in the area include a library building, local schools, public toilets and more recently, literacy classes in the morning for carpet weaving girls. People contributed free labour and other resources for the purposes.

In Aswin 2050 RCP, in cooperation with a few local leaders organized a brain-storming session in the village which was participated by some 34 local leaders and representatives of different voluntary bodies and traditional Guthis in the community. Problems identified concerned health and sanitation, drinking water and drainage, irrigation, education, trails and lack of popular consciousness among others. An 18-member action committee was later formed and included representatives from all local organizations including the

local Village Development Committee and two political parties to assure community consensus. With a generous promise of assistance amounting to Rs10,000. from Rtn. Prajapati Prasai, RCP is currently interacting with the committee to launch a sustainable programme of ensuring school enrollment for children out of school in the community. It is hoped that a successful experience in this effort will lead on to extended activities in other fields as well.

## *2. RCP and Denver Mile High Rotary Club in Parsel:*

Parsel is a predominantly Tamang village of 168 households and 1048 people representing three wards of the Thullo Parsel Village Development Committee in Kabre district. It is a day's walk (or an hour's rafting over Sunkosi followed by an hour's climb) from the nearest roadhead at Dolalghat 55 km. east of Kathmandu. Tamangs being known for poverty in the country, it is a poor village with only a handful of households doing relatively better from trekking business. Some 15 villagers work as drivers in Kathmandu.

On the recommendation of one of its members, Ms Patricia Parker who has been acquainted with the village for some time, the Denver Mile High Rotary Club of Colorado USA requested RCP to co-sponsor a drinking water project in the village in July 1993, and it was instantly agreed to by the latter with a sense of gratitude for the promised assistance. RCP followed it up by preparing a detailed design and estimate for the project which was generously done on credit by the Multi Disciplinary Consultants (P) Ltd. In January 1994 was

highly acclaimed by the US Club. The estimated cost of the project was 1.25 million rupees and included about 10 percent of the total cost in local contribution for transporting sand, gravel, boulder, cement, pipes and trench excavation.

Consistent with its policy of making development activities locally sustainable, the RCP, working through the enlightened leaders of the community mainly Mr Ram Bahadur Tamang and Tilak Lama, requested the community to hold extensive discussion on the modalities of implementing the project and its future management and on-going maintenance. In August 1993 a meeting participated by 71 beneficiary households constituted a 3-person User Committee for each possible tapstand and another one for the construction and future management of the whole project. Beneficiary resources in terms of user fees are to be mobilized to pay the local caretaker who would be trained during the construction project.

The Parselese aspired to accomplish the project before the onset of the monsoon in 1994 and to that end, put together such necessary local materials as gravel and sand at the proposed project site. On the other side of the globe, Denver Mile High Rotary Club is also doing its best to mobilize the US\$ 22,000. needed in assistance to the project. Once the project is completed, it will not only fulfill an acutely-felt need of the local people but will also remain a monument of international Rotary cooperation for augmenting the welfare of a disadvantaged community on a sustainable basis in the mountain fastness of Nepal.

## VOCATIONAL SERVICE 1993/94

**Rtn. Kamal Nyachhyon**  
Director, Vocational Service

Although the field of vocational service in Rotary movement provides many opportunities for action, not much could be accomplished during the year under review because of some unavoidable circumstances. What follows is a brief resume of the activities undertaken in this area during the year.

The club has been planning to launch an important programme for the mentally retarded children in Lalitpur district with the assistance of NFPU which is a non-government organization of Norway dedicated to the cause of mentally retarded around the world. A vocational training programme has been conceived for implementation in the Susta

Manasthiti Kalyan Vidyalaya, a school for mentally retarded people. Mr. Karl John Hannes, the representative of NFPU has shown his interest which could result in some kind of joint programme in this respect. A few months ago a meeting was held in the Chamber of Commerce and Industry building in Lalitpur in which a Norwegian team exchanged views with Nepali participants including a few fellow Rotarians from our Club for this purpose. We are hopeful that the training programme could get under way in 1994/95.

In the same manner, the Club was able to impart training in hotel cooking with the generous support of Rt. Chandra Shekhar Gyawali, Chairman, Narayani Group of

Hotels. Four trainees were sent for training, each receiving a stipend of Rs. 1000. a month. However, only one of them completed the training successfully. We hope that he should have no problem finding a job in any starred hotel in the country.

Other offers of similar nature from fellow Rotarians are also outstanding and consist of training in jungle guide offered by Rtn. Shanta Kumar Shrestha, carpet weaving by Rtn. Pushkar Man Shakya, Thanka painting by Rtn. Narendra Narshing Shakya bansa, and airline ticketing by myself. We hope that these training programmes could be taken up based on the experience of the cook training.

Besides, our Club has also contributed a lot in getting a vocational training programme started which was organized by the Small and Cottage Industries Development Committee of the government in Patan in the year 1993/94.

## इन्टरनेशनल सर्भिसको तर्फको प्रतिवेदन

१९९३-९४

कमल मणि दिक्षित



रोटरी क्लबको इन्टरनेशनल सर्भिसले गर्ने कुरा धेरै छन् तर नेपालका क्लबहरूमा गरिन्दन् धेरै कम मात्र। अन्तर्राष्ट्रिय भाइचारा, सद्भावना, समझदारी र विश्वशान्तिको अभिवृद्धि गर्नेगराउने यो सर्भिसको काम हो। त्यसका लागि अनेक ढोका खुला छन्। मुख्यत, अरु देशका मान्छेलाई चिन्ने, उनको संस्कृति बुझ्ने, उनीहरूका उपस्थिको लेखा-जोखा राख्ने या उनीहरूका दुःख सुखमा सहभागी भई एक आर्कालाई मद्दत गर्ने हो, त्यो जे जसरी गर्ने पनि हुन्छ। व्यक्तिगत सम्पर्कबाट, संस्थागत विनिमयबाट, अन्तर्राष्ट्रिय भ्रमणबाट या विद्वानहरूको भाषण, विचार आदान-प्रदानबाट जे जति अन्तर्राष्ट्रिय समझदारीको सिर्जना गर्न सकिन्छ त्यो नै यस सर्भिसबाट रोटरी क्लबमा हुनसक्ने सेवा हो।

रोटरी फाउण्डेसन अन्तर्गतका क्रियाकलापहरू सबै यसै सेवाका काम हुन्। फाउण्डेसनका काम लिने र दिने दुवै कुरा पर्छन्। सबभन्दा पहिले लिनेभन्दा दिने नै कुरा गरें। पाउल ह्यारिस फेलो बन्नु बनाउनु क्लबहरूको यस इन्टरनेशनल सर्भिस तर्फको सबभन्दा ठूलो सेवा कार्य हो। किनभने यस्ता फेलोहरूबाट प्राप्त हुने अनुदान सबै नै अन्तर्राष्ट्रिय समझदारी या विश्वशान्तिका

दिशामा खर्च हुन्छन्। हाम्रो पाटन रोटरी क्लबमा "मल्टी" समेत गरी पाउल ह्यारिस फेलो जम्मा जम्मी १४ जना भएका छन्। त्यसमध्ये ६ जना त यसै वर्ष मात्र भएका हुन्। पाउल ह्यारिस फेलो सप्टेनिड ४ जनामध्ये २ जना यसै पालि बनेका पनि हिसाब गर्दा यस वर्ष इन्टरनेशनल सर्भिसमा हाम्रो क्लबको योगदान कम छैन भन्ने दावा गर्न सकिन्छ।

इन्टरनेशनल सर्भिसको हामीले "दिने" सेवामा एक्सचेन्ज स्टुडेण्टलाई गृह आतिथ्य दिने पनि महत्वपूर्ण अंग हो। यो कार्य पनि पाटन रोटरी क्लबले गत वर्ष अत्यन्त सफलतासहित गर्‍यो। क्यानडाकी सुश्री ट्राण्डीलाई हाम्रा रोटेरियन साथीहरू ९ महिना सम्म आफ्नै चेलीवेटी जस्तै गरी घरमा पाल्नु भयो। उनी नेपालबारे सारैमीठो सम्झना बोकेर विदा भइन्। अन्तर्राष्ट्रिय समझदारीको यसभन्दा राम्रो उदाहरण के हुन्छ? यस्तै अष्ट्रेलियाबाट आएकी अर्की रोटरी एक्सचेन्ज स्टुडेण्ट सुश्री भनेस्मालाई हामीले २ महिना जति आतिथ्य प्रदान गर्‍यो। त्यस्तै, फ्रान्सबाट आएकी सुश्री अरियललाई पनि एक हप्ता हामीले अतिथि बनाएर राख्यौं। जी. एस.ड. टीमका २३ जनालाई पनि २४ दिनको

होम-हस्पिटालिटी हामीले दिनु पर्‍यो र दिंयौं। तर दुर्भाग्यको कुरो के भने जी.एस.ड. टीममा यताबाट पठाउने सदस्य छान्ने बेलाको चाहिँ हामीले पत्तोसम्म नपाई एकजना काठमाण्डौंको अर्कै क्लबबाट छानिइसकेको कुरो सुन्न हामीले बाध्य हुनु पर्‍यो।

अन्तर्राष्ट्रिय रोटरी क्लबहरूबाट सहयोग प्राप्त हाम्रो एडल्ट अर्थोपिडिक हस्पिटल (जोरपाटी) को काम गत वर्षहरूदेखि पनि भैने रहेको छ र यो वर्ष त्यो काम सम्पन्न हुनेछ। इन्टरनेशनल सर्भिसको यो कार्य स्व. रो. नन्दरामजीको सक्रियतामा भएको हो। उहाँको अभाव ऐले हामीलाई खट्टकिएको छ।

इन्टरनेशनल सर्भिस अन्तर्गत हाम्रो क्लबले परपरको देशका रोटरी क्लबहरूलाई हाम्रा साप्ताहिक मीटिङहरूमा "टोष्ट" गर्ने कार्य शुरूक केही हप्ता चलेको थियो। तर त्यो अगाडि बढेन र त्यो बन्द भयो। एउटा राम्रो थालनी भएकाले यस वर्ष त्यसलाई पुनः चालू गर्नु उचित हुनेछ। अन्तर्राष्ट्रिय फेभिली एक्सचेन्ज कार्यक्रम पनि हामीले गर्न लागेका थियौं। तर गत वर्ष त्यो पनि सफल भएन। यो वर्ष गर्न सके राम्रो हुनेछ।

अन्तर्राष्ट्रिय समझदारीका लागि विदेशबाट आएका रोटेरियनहरूलाई हाम्रो क्लबमा झण्डा आदान-प्रदान गरेर फेलोशिप गर्ने कार्यमा पनि हामी सफल छौं। गत वर्ष हामी करीव २०२४ ओटा झण्डा साट्यौं। साथै हाम्रा रोटेरियन साथीहरू विदेश भ्रमणमा जाँदा नेपालबारे र हाम्रो क्लबबारे बोलेर पनि यस अभियानलाई गति प्रदान गर्ने गर्नु गएको छ। साथै आर. आइ. का कन्भेन्सनहरूमा केहीले भाग लिने पनि हाम्रो परम्परा रहेको छ।

## TREASURER'S TIPS

Chirinjibi Acharya

### Sources of Income:

The following information is intended to give the fellow Rotarians and other readers some idea as to the composition of sources of income and expenditure of Club resources.

### Membership Fees:

The Rotary Club of Patan had decided to raise its annual membership fees @ 5000.

### Sun Shine Fund:

The total amount membership fees was collected Rs. 1,67,900 for the year 1993/94. In order to generate more resources for welfare and development activities, the Club also has also set up a sunshine Fund and has established a Tradition of collecting contributions from individual members by way of celebrating their happy personal events in the club meeting. Members normally donate 100Rs. for Birthday - 100 Rs. for marriage anniversary and US \$ 2 or equivalent for happy landing upon return from overseas

travels. Every member is also expected to donate Rs. 10/- for each meeting. The Sunshine Fund amounted to 22,365/- for the year 1993/94.

### Bank Interest on Fixed Deposit:

The Rotary Club of Patan had also set up an "Education Endowment Fund" with contribution from the Club Rotarian as well as the other people including visiting Rotarians. Such contributions are kept in fixed deposits and the interest on them are used for distributing scholarship to needy students. The Rotary Club of Patan had distributed the scholarship to 32 student Rs. 100/- per month. The amount thus expended was Rs. 38,400/- for 1994/95.

### Income from advertisements:

The Rotary Club of Patan publishes the "Lalit Dhara" weekly bulletin. All the Rotarian related news are give in the bulletin. Each issue is sponsored by individual members.

### Expenditure:

The expenses in dinner and snacks was reduce by 20% last year. The staff salary increased by 33.33%.

### Project:

a. Adult Orthopaedic Hospital (16 bed): The construction work will be completed this year. It has an international support amounting to US \$ 2,25,000.

b. Dhunge Dhara (hitis) - water spout: Dhunge Dhara restoration Project has started 3 years ago and flow of water has been restored in two of the Dunga Dhara: We will try to restore one more Dhunge Dhara in this year.

c. Distribution of high-breed goats: An experimental Project just outside the valley aims at raising the quality / breed of local goats. The village core groups have been formed to implement. The project amount is Rs. 61,250. out of that amount Rs. 45,800. has been transferred to the project co-ordinator.

### Education Endowment Fund

Our Education Fund has increased by Rs. 60,000 this year. The total fund will be Rs. 4,23,320. The interest on it will be 40,000. From this interest we can provide scholarship for 33 students.

## THE INNER WHEEL IN THE MAKING

Anne Chandralekha Kayastha  
 President  
 Inner Wheel Club of Patan



### Introduction:

The Inner Wheel Club of the Rotary Club of Patan is a recreation. It is a meeting point of wives of the Rotarians, who otherwise meet only when the Rotary Club had the dinner meetings and the wives were invited as guests. But the wives need not be limited to it only. They can have their own organization which, in Rotary parlance, is called the Inner Wheel and meets more often for better friendship and understanding and to seek avenues for their own contribution to the community.

### Aims and objectives of the Inner Wheel:

Generally, the Inner Wheel Club is inspired by the following aims and objectives:

1. To promote true friendship
2. To encourage the ideals of personal service
3. To foster international understanding

Inner Wheel concentrates upon true friendship and personal service. It is not a money raising organization but each club selects its own

activities and channels of service. It has complete freedom of choice in the type and extent of its services. Each Club enjoys close ties with its corresponding Rotary Club and is always willing to support Rotary when invited to do so.

### Brief historical background:

Initially a Club was formed in 1920 by wives of Rotarians of Great Britain and Ireland with the object of fostering friendship amongst themselves. In 1924 it was given the name of Inner Wheel which soon began to spread to other countries where Rotary was active and gradually the movement became worldwide. Since the formation of International Inner Wheel in 1967, its extension has been very rapid and clubs are now to be found in all five continents. It has become one of the largest women's organization in the world.



**Organisation and composition:**

Membership is open to wives or in certain cases to the members of the family belonging to the household of Rotarians. Every Inner Wheel Club has a corresponding Rotary Club, and the name is given accordingly e.g. the Inner Wheel Club of Rotary Club of Patan. The Inner Wheel can be formed three months after the Rotary Club receives the Charter. To initiate a club there should be at least 12 potential members.

The Inner Wheel Club of the Rotary Club of Patan has been in action since October 14, 1994, the day our first meeting was held. As we were more than 12 members in the first meeting, we made that our Inaugural Meeting. Since then we have been having meetings every month. In order to maintain close ties with our corresponding Rotary Club, we opted to have the same venue for meeting, that is Hotel Narayani. To make sure that we meet the same day

as the Rotary Club, we selected the last Monday of the Nepali Calendar month for the meeting of the Inner Wheel.

**Our Club officers are as follows:**

- President  
Anne Chandralekha Kayastha
- Vice President  
Anne Brinda Rana
- Secretary  
Anne Manu Rajkarnikar
- Jt. Secretary  
Anne Sangita Gyawali
- Treasurer  
Anne Anju Dixit
- Club Correspondent  
Anne Chandralekha Pandey
- International Service Organiser  
Anne Sharada Prasai

We are now 19 members and all the members who join the Club before it is chartered are founder members. We are now in the process of getting the Charter from International Inner Wheel. We have completed all the necessary formalities like

sending the filled forms and capitation fees. Therefore, only the Charter is being awaited.

**Exploring areas of service:**

We are happy to be on the move even before we have the Charter. We are currently exploring the possible areas of activities in which our Club too can make contributions in the service to needy people. For this purpose we are interacting with the Rotary Club of Patan to identify areas of mutual cooperation. Recently we invited Rtn. Bihari Krishna Shrestha to give us a talk in this respect. Since our members are active and inspired citizens who are always willing to do something for the needy communities, we will continue to look for ways to extend our services to them.

We want to express our thanks to the Rotary Club to Patan for having spared some space in this Souvenir Issue and acknowledged our existence.

**"Shahnaz Hussain" is a god's gift to the world.  
 She has spread the rich herbal heritage of the east around  
 the world. " Our work is based on Shahnaz Hussain's  
 principles " Herbal Beauty Care "  
 From Head to Toe-tips.**

Why not try our : Accupressure Face Lift Manicure,  
 Pedicure, Body Massage, Head Massage, different Hair Cuts and Hair Styles  
 and different make-ups.

We also treat different ailments like, Migrains, Sinus,  
 Spondelitis, Sciatica and other back aches  
 by accupressure therapy.

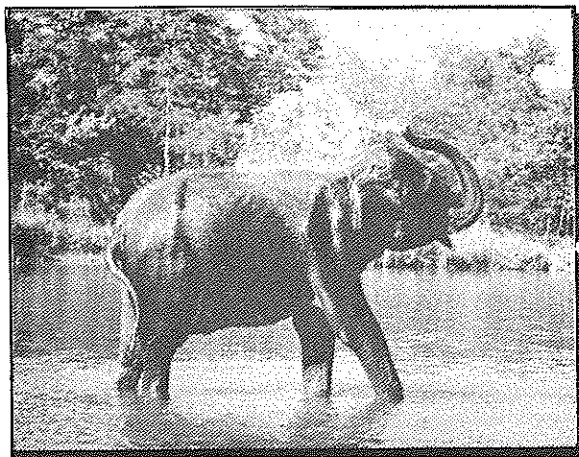
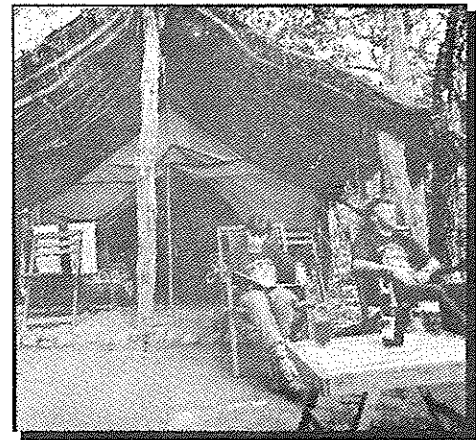
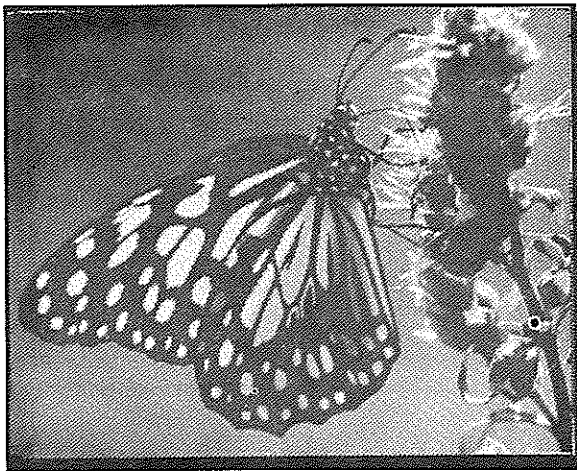
*Enter* (For Ladies Only)

**NARAYANI'S  
 HERBAL BEAUTY CLINIC**



**Hotel Narayani, Pulchowk, Lalitpur.  
 and Transform yourself to a new you  
 for appointment call 525016/ 017 / 018, 521711/ 712**

# Wildlife adventure in luxury lodges and tented camps



*An exclusive wildlife  
camp at a prime  
location inside the  
Royal Chitwan  
National Park*



***Island Jungle Resort***

G.P.O. Box 2154 Durbar Marg, Kathmandu.  
Phone: 220162, 225615, 229116  
Telex: NP 2409 Alpine Fax: 977-1-223814

## ROTARY FOUNDATION AND PAUL HARRIS FELLOW:

Compiled by: N.G. Halwai

**R**otary Foundation is a nonprofit corporation supported solely by contributions from Rotarians and others. The foundation has spent about US \$ 430 million on its programme since 1947. The programmes supported by Rotary Foundation are:

- Scholarship
- Group Study Exchange
- Health, Hunger and Humanity (3-H) Grants
- Grants for Rotary Volunteers
- Matching Grants
- Poliplus
- Rotary Peace Programs

*Contribution to Rotary Foundation could be*

- Paul Harris Fellow (PHF) contribution
- Paul Harris Sustaining Members (PHSM) contribution
- Annual giving
- Foundation Benefactor

Rotarians and others could contribute U \$ 1000 to Rotary Foundation and become a Paul Harris Fellow (PHF). Additional US \$ 1000 contribution on own name or in the name of others entitles one to become Multiple Paul Harris Fellow and at the same time the other too becomes a Paul Harris Fellow.

Installment payment at a multiple of US\$ 100 each year could be made to become Paul Harris Sustaining Members (PHSM). Once total contribution totals US\$ 1000 he becomes PHF. There are 434,794 PHF. (Rotary News, April 1994). Rotary Club of Patan (RCP) has contributed about US\$ 15,000. There are 13 PHF and 4 PHSM as

1.	Rtn. Matsendra Lal Kayastha	Multiple PHF (2 self and 1 for Anne)
2.	Dinesh Shrestha	PHF
3.	Asheesh Giri	PHF
4.	Rtn. Chandra Sekhar Gyawali	Multiple PHF (1 self and for Anne)
5.	Rtn. Siddhi B. Shakya	PHF
6.	Rtn. Bijaya Bajracharya	Multiple PHF (1 self and for Anne)
7.	Rtn. Rabindra R. Pandey	Multiple PHF (1 self and for Anne)
8.	Rtn. Prajapati Prasai	PHF
9.	Rtn. Kamal M. Dixit	PHF
10.	Anne. Chandra Lekha Kayastha	PHF
11.	Anne. Bulu Gyawali	PHF
12.	Anne. Rajani Bajracharya	PHF
13.	Anne. Chandralekha Pandey	PHF
14.	Rtn. (Dr.) Hom R. Bajracharya	PHSM
15.	Rtn. Sagar S. Rana	PHSM
16.	Rtn. Vishnu P. Dhital	PHSM
17.	Rt. Santa K. Shrestha	PHSM

Rotary Foundation Support to a Club depends upon the Club's contribution to Rotary Foundation.

Support from Rotary Foundation to RCP as matching grants as follows.

1. Matching grant No. 2671 for medical equipment to Patan Hospital (Contribution from Club of Australia and RCP equaled A\$ 17,000)
2. Matching grant No. 2568 for Modern Electronic System Ultrasonic Machine and Accessories for Amp Pipal Hospital, Gorkha C \$ 1,740 (Contribution of C\$ 1,740 from RI District 2050, Canada)
3. Matching Grant No. 2636 for Drinking Water Supply to a village of Simal Bhanjyang, near Pokhara - Sterling Pound

2450 (Contribution of Sterling Pound 2450 from Club of England)

4. Matching grant No. 3996 for Drinking Water Supply to five villages scattered in the country. Sterling Pound 11,333 (Contribution of Sterling Pound 11,333 from Clubs of RI District 1150)

Besides, Rotary Foundation supports, other significant contribution is US\$ 225,000 from District 7090 of CANADA/USA for Adult Orthopaedic Hospital Building Construction at Jorpati and for Polio Plus Project. There are other supports from Rotary Club of Japan, Australia, Europe, USA and individual Rotarians for various development and humanitarian projects undertaken by Rotary Club of Patan.

**With Best Compliments From**

**Mr. & Mrs. M.L. Kayastha & Associates**  
**Consulting Architects & Engineers**  
**MLK Building, Kandevasathan,**  
**Kupandole, Lalitpur - 10, NEPAL**  
**Tel. 523758, 524758**  
**Fax. 977-1-524758**

**SERVICES OFFERED**

The Firm is particularly qualified and offers comprehensive and integrated range of planning, design and technical services as follows :

**PROJECT STUDIES**

Feasibility Studies

Design Studies

---

**DESIGN AND CONTRACT DOCUMENTS**

Design for all Architectural Works

Industrial Architecture

Structural Design

Cost Estimation and

Building Services Design

Tender Documents

Interior Design

Contract Negotiation

Landscape Architecture

---

**EXECUTIVE SERVICES**

Contract Administration

Construction Supervision

---

**SURVEY & VALUATION**

Surveying

Property Valuation

---

**DEVELOPMENT**

Development Plans



## DISTRICT COMMITTEE MEMBERS FROM RCP

District 3290 have nominated several Rotarians from this Club to various district committees for 1994-95. Bitter experience of the Club has been that the nominated members to District Committees remained virtually inactive in the past. We congratulate the nominated members and hope for their vibrant activity this year. The job description of the Committees are given in the District Directory. The nominated members, Committees and designation are as follows:

<u>Personnel</u>	<u>Designation/Committee</u>		
Rtn Matsendra L. Kayastha	Member, District Awards Governors Aids Member, Rotary Foundation Information Member, Senior Citizen and Probus	Rtn Biswa K. Mainali	Member, Constitution and By-laws, Resolution and Arbitration Co-chairman, District Meets Promotion and Participation Co-chairman, Consumer Protection and Guidance Member, Employer Employee Relation Member, Legal Aids
Rtn Narayan G. Halwai	Zonal Secretary Member, Rotary Information Member, Vocational Trade and Professional Relation	Rtn Chandra S. Gyawali	Co-chairman, Inter District Family Exchange Member, District Fellowship Co-chairman, Service Ideas Bank
Rtn Kamal M. Dixit	Member, Rotary Foundation. Co-chairman, Rotary Foundation Information Chairman, Rotary Extension Chairman, Rotary Information Member, Assistance to New, Small and Less Active Clubs	Rtn Chandra S. Gyawali	Co-chairman, Inter District Family Exchange Member, District Fellowship Co-chairman, Service Ideas Bank
Rtn Prajapati Prasai	Member, Rotary Foundation Grants Member, Assistance to New, Small and Less Active Clubs	Rtn Bachhan Gyawali	Member, Inter District Family Exchange
Rtn Prajapati Prasai	Member, Rotary Foundation Grants Member, Assistance to New, Small and Less Active Clubs Co-chairman, Water and Sanitation Member, On to Convention	Rtn Hom R. Bajracharya	Member, District Meets Promotion and Participation Member, Welfare, Service and Rehabilitation of Disabled and Handicapped
Rtn Dr. Bhisma Prasai	Member, PolioPlus Member, Past President Participation Member, Drug and Substance Abuse Prevention	Rtn Tirtha M. Shakya	Member, Intercity Seminar/Workshops Member, Consumer Protection and Guidance Member, Rotary Volunteers
Rtn Renu Shrestha	Member, Rotary Extension Member, 4 way test	Rtn Rishi Shah	Member, Achievement of RI Citation and District Goals Member, Vocational Awards
Rtn Puskar M. Shakya	Member, Membership Development and Retention Member, Assistance from International Agencies Member, Matched District Clubs	Rtn Kamal Nyachhyon	Member, Designate, Month Programmes, Planning and Celebration
Rtn Suresh C. Lakhey	Member, World Community Service Member, Attendance Promotion Member, Service Ideas Bank Chairman, Designate, Month Programmes, Planning Member, Career Information, Guidance and Development Member, Career Information, Guidance and Development Member, Entrepreneurship Development	Rtn Vishnu P Dhital	Member, Vocational Awareness Member, Senior Citizen and Probus
		Rtn Sagar Rana	Co-chairman, Vocational Awards Member, Health, Hygiene, Nutrition and Disease Prevention
		Rtn Ganesh R. Shrestha	Member, Vocation at Works
		Rtn Bihari K. Shrestha	Member, Environment and Ecology Member, International Family and Goodwill Exchange
		Rtn Bijaya Bajracharya	Member, Environment and Ecology Governors Group Representative, for Kathmandu Midtown
		Rtn Madhav Lal Pradhan	Member, World Fellowship Activity and Fellowship

***We import***

- **New Zealand Raw Wool as per HMG Standard.**
- **Plastic Granules.**
- **Copper Scraps.**
- **Many other commercial items.**

***We Provide Following Services***

- **Import every kind of Industrial Raw Materials, commercial goods as per request at very minimum service charges.**

***Nepal Wool Trading Co. (Pvt.) Limited***

G.P.O. Box: 60 Lalitpur, Pulchowk, Lalitpur.  
Phone: 5 24409, Tlx: 2711 NEWTCO NP, Fax: 977-1-526870

## ROTARY CLUB OF PATAN

1994 - 1995 EXECUTIVE, COMMITTEE CHAIRPERSON AND MEMBERS and RESIDENT TELEPHONE

<table border="1" style="width: 100%;"> <tr><td>Sagar Rana 521667 President</td></tr> <tr><td>B Gyawali 524138 Joint Secretary</td></tr> <tr><td>T M Shakya 522467 Vice President/ Presedint Elect</td></tr> </table>	Sagar Rana 521667 President	B Gyawali 524138 Joint Secretary	T M Shakya 522467 Vice President/ Presedint Elect	<table border="1" style="width: 100%;"> <tr><td>B Bajracharya 524586 Immediate Past President</td></tr> <tr><td>C Acharya 522378 Treasurer</td></tr> <tr><td>Membership Development/ Classification/ Membership Committee Job : Club 3/8</td></tr> <tr><td>Rotary information/ Club Bulletin/ Magazine Committee Job : Club 1 &amp; 2</td></tr> <tr><td>Attendance Committee Job : Club 6, 7</td></tr> <tr><td>Programme Fellowship/ Activity Committee Job : Club 4</td></tr> <tr><td>Public Relation Committee Job : Club 2, 3</td></tr> <tr><td>Career Development/ Vocation at Work Committee Job : Vocation : 6, 10</td></tr> <tr><td>Vocational Awareness/ Vocational Awards Committee Job : Vocation 8</td></tr> </table>	B Bajracharya 524586 Immediate Past President	C Acharya 522378 Treasurer	Membership Development/ Classification/ Membership Committee Job : Club 3/8	Rotary information/ Club Bulletin/ Magazine Committee Job : Club 1 & 2	Attendance Committee Job : Club 6, 7	Programme Fellowship/ Activity Committee Job : Club 4	Public Relation Committee Job : Club 2, 3	Career Development/ Vocation at Work Committee Job : Vocation : 6, 10	Vocational Awareness/ Vocational Awards Committee Job : Vocation 8	<table border="1" style="width: 100%;"> <tr><td>T Neupane 522320 Secretary</td></tr> <tr><td>Y B Shrestha 522753 Sergeant At Arms</td></tr> <tr><td>H R Bajracharya 521559</td></tr> <tr><td>P M Shakya 521335</td></tr> <tr><td>R R Pandey, 521652</td></tr> <tr><td>J S Rana 472743</td></tr> <tr><td>K M Dixit 521889</td></tr> <tr><td>T Neupane 522320</td></tr> <tr><td>B Gyawali 524138</td></tr> <tr><td>R Shrestha 525677</td></tr> <tr><td>Y B Shrestha 522753</td></tr> <tr><td>D Thapa 524999</td></tr> <tr><td>T Neupane 522320</td></tr> <tr><td>T M Shakya 522467</td></tr> <tr><td>C S Gyawali 521311</td></tr> <tr><td>B K Mainali 416119</td></tr> <tr><td>M L Kayastha 524758</td></tr> <tr><td>C S Gyawali 521311</td></tr> <tr><td>R Shah 525373</td></tr> <tr><td>B R Prasai 521910</td></tr> <tr><td>M L Pradhan 524700</td></tr> <tr><td>S C Lakhey 521399</td></tr> <tr><td>G R Shrestha 522157</td></tr> <tr><td>(Mrs) R Kohli 522162</td></tr> <tr><td>V Dhital 521024</td></tr> <tr><td>S K Shrestha 521745</td></tr> <tr><td>P M Shakya 521335</td></tr> <tr><td>I B Shakya 526005</td></tr> <tr><td>N.N. Shakya Bansa</td></tr> </table>	T Neupane 522320 Secretary	Y B Shrestha 522753 Sergeant At Arms	H R Bajracharya 521559	P M Shakya 521335	R R Pandey, 521652	J S Rana 472743	K M Dixit 521889	T Neupane 522320	B Gyawali 524138	R Shrestha 525677	Y B Shrestha 522753	D Thapa 524999	T Neupane 522320	T M Shakya 522467	C S Gyawali 521311	B K Mainali 416119	M L Kayastha 524758	C S Gyawali 521311	R Shah 525373	B R Prasai 521910	M L Pradhan 524700	S C Lakhey 521399	G R Shrestha 522157	(Mrs) R Kohli 522162	V Dhital 521024	S K Shrestha 521745	P M Shakya 521335	I B Shakya 526005	N.N. Shakya Bansa
Sagar Rana 521667 President																																											
B Gyawali 524138 Joint Secretary																																											
T M Shakya 522467 Vice President/ Presedint Elect																																											
B Bajracharya 524586 Immediate Past President																																											
C Acharya 522378 Treasurer																																											
Membership Development/ Classification/ Membership Committee Job : Club 3/8																																											
Rotary information/ Club Bulletin/ Magazine Committee Job : Club 1 & 2																																											
Attendance Committee Job : Club 6, 7																																											
Programme Fellowship/ Activity Committee Job : Club 4																																											
Public Relation Committee Job : Club 2, 3																																											
Career Development/ Vocation at Work Committee Job : Vocation : 6, 10																																											
Vocational Awareness/ Vocational Awards Committee Job : Vocation 8																																											
T Neupane 522320 Secretary																																											
Y B Shrestha 522753 Sergeant At Arms																																											
H R Bajracharya 521559																																											
P M Shakya 521335																																											
R R Pandey, 521652																																											
J S Rana 472743																																											
K M Dixit 521889																																											
T Neupane 522320																																											
B Gyawali 524138																																											
R Shrestha 525677																																											
Y B Shrestha 522753																																											
D Thapa 524999																																											
T Neupane 522320																																											
T M Shakya 522467																																											
C S Gyawali 521311																																											
B K Mainali 416119																																											
M L Kayastha 524758																																											
C S Gyawali 521311																																											
R Shah 525373																																											
B R Prasai 521910																																											
M L Pradhan 524700																																											
S C Lakhey 521399																																											
G R Shrestha 522157																																											
(Mrs) R Kohli 522162																																											
V Dhital 521024																																											
S K Shrestha 521745																																											
P M Shakya 521335																																											
I B Shakya 526005																																											
N.N. Shakya Bansa																																											
<table border="1" style="width: 100%;"> <tr><td>N G Halwai 521364 Director : Club</td></tr> </table>	N G Halwai 521364 Director : Club	<table border="1" style="width: 100%;"> <tr><td>Environment Protection Committee Job : Community 6</td></tr> <tr><td>Community Development Partners in Service Committee Job : Community 3, 4</td></tr> </table>	Environment Protection Committee Job : Community 6	Community Development Partners in Service Committee Job : Community 3, 4	<table border="1" style="width: 100%;"> <tr><td>Prafulla M Singh 524522</td></tr> <tr><td>I B Shakya 526005</td></tr> <tr><td>Dr. K Giri 521316</td></tr> <tr><td>R Shah 525373</td></tr> <tr><td>S B Shakya 526792</td></tr> <tr><td>R C M Amatya 522360</td></tr> <tr><td>R Kohli 522162</td></tr> <tr><td>P Regmi 525536</td></tr> </table>	Prafulla M Singh 524522	I B Shakya 526005	Dr. K Giri 521316	R Shah 525373	S B Shakya 526792	R C M Amatya 522360	R Kohli 522162	P Regmi 525536																														
N G Halwai 521364 Director : Club																																											
Environment Protection Committee Job : Community 6																																											
Community Development Partners in Service Committee Job : Community 3, 4																																											
Prafulla M Singh 524522																																											
I B Shakya 526005																																											
Dr. K Giri 521316																																											
R Shah 525373																																											
S B Shakya 526792																																											
R C M Amatya 522360																																											
R Kohli 522162																																											
P Regmi 525536																																											
<table border="1" style="width: 100%;"> <tr><td>M L Shilpakar 521366 Director : Vocation</td></tr> </table>	M L Shilpakar 521366 Director : Vocation	<table border="1" style="width: 100%;"> <tr><td>World Community Service Fellowship Activities Committee Job : International</td></tr> <tr><td>Rotary Foundation Job : International</td></tr> <tr><td>Youth Exchange Youth Reports Committee Job : International</td></tr> </table>	World Community Service Fellowship Activities Committee Job : International	Rotary Foundation Job : International	Youth Exchange Youth Reports Committee Job : International	<table border="1" style="width: 100%;"> <tr><td>Y B Shrestha 523753</td></tr> <tr><td>L Gyawali 524138</td></tr> <tr><td>P Prasai 525012</td></tr> <tr><td>R Pandey 521652</td></tr> <tr><td>M L Kayastha 524758</td></tr> <tr><td>N G Halwai 521364</td></tr> <tr><td>B Bajracharya 524586</td></tr> <tr><td>P M Shakya 521335</td></tr> <tr><td>B Gyawali 524138</td></tr> <tr><td>P Prasai 525012</td></tr> <tr><td>N G Halwai 521364</td></tr> <tr><td>J S Rana 472743</td></tr> </table>	Y B Shrestha 523753	L Gyawali 524138	P Prasai 525012	R Pandey 521652	M L Kayastha 524758	N G Halwai 521364	B Bajracharya 524586	P M Shakya 521335	B Gyawali 524138	P Prasai 525012	N G Halwai 521364	J S Rana 472743																									
M L Shilpakar 521366 Director : Vocation																																											
World Community Service Fellowship Activities Committee Job : International																																											
Rotary Foundation Job : International																																											
Youth Exchange Youth Reports Committee Job : International																																											
Y B Shrestha 523753																																											
L Gyawali 524138																																											
P Prasai 525012																																											
R Pandey 521652																																											
M L Kayastha 524758																																											
N G Halwai 521364																																											
B Bajracharya 524586																																											
P M Shakya 521335																																											
B Gyawali 524138																																											
P Prasai 525012																																											
N G Halwai 521364																																											
J S Rana 472743																																											
<table border="1" style="width: 100%;"> <tr><td>B K Shrestha 522173 Director : Community</td></tr> </table>	B K Shrestha 522173 Director : Community	<table border="1" style="width: 100%;"> <tr><td>Education Committee</td></tr> <tr><td>P Prasai 525012</td></tr> <tr><td>C Acharya 522378</td></tr> <tr><td>M L Shilpakar 521366</td></tr> <tr><td>R Shrestha 525677</td></tr> <tr><td>Orthopaedic Hospital Committee</td></tr> <tr><td>Dr. B R Prasai 521910</td></tr> <tr><td>M L Kayastha 524758</td></tr> <tr><td>B K Shrestha 522173</td></tr> <tr><td>N G Halwai 521364</td></tr> <tr><td>Stone Spout Committee</td></tr> <tr><td>N N Shakyabansha</td></tr> <tr><td>N G Halwai 521364</td></tr> </table>	Education Committee	P Prasai 525012	C Acharya 522378	M L Shilpakar 521366	R Shrestha 525677	Orthopaedic Hospital Committee	Dr. B R Prasai 521910	M L Kayastha 524758	B K Shrestha 522173	N G Halwai 521364	Stone Spout Committee	N N Shakyabansha	N G Halwai 521364	<table border="1" style="width: 100%;"> <tr><td>Planning, Monitoring and Coordination Committee</td></tr> <tr><td>P. VP. S. JJ. D. SGT. T</td></tr> </table>	Planning, Monitoring and Coordination Committee	P. VP. S. JJ. D. SGT. T																									
B K Shrestha 522173 Director : Community																																											
Education Committee																																											
P Prasai 525012																																											
C Acharya 522378																																											
M L Shilpakar 521366																																											
R Shrestha 525677																																											
Orthopaedic Hospital Committee																																											
Dr. B R Prasai 521910																																											
M L Kayastha 524758																																											
B K Shrestha 522173																																											
N G Halwai 521364																																											
Stone Spout Committee																																											
N N Shakyabansha																																											
N G Halwai 521364																																											
Planning, Monitoring and Coordination Committee																																											
P. VP. S. JJ. D. SGT. T																																											
<p><b>Key:</b></p> <table border="1" style="width: 100%;"> <tr><td>Committee Chairperson</td></tr> <tr><td>Committee Members</td></tr> </table>			Committee Chairperson	Committee Members																																							
Committee Chairperson																																											
Committee Members																																											

## MEMBERS OF ROTARY CLUB OF PATAN

**AMATYA (Dr.) RAMCHHAYA MAN :**  
 ENT Surgeon: Tribhuvan University  
 Teaching Hospital, Maharajgunj,  
 Kathmandu: Res, Kumaripati, Lalitpur :Ph  
 (O)412303/2404 (R) 522360 :B. 3 Oct : W  
 . 9 Dec: Ann. MEERA: Serv, D :1988.

**ACHARYA CHIRANJIBI** Audit- general  
 :Mc Traders, Kopundole, Lalitpur-6: Ph:  
 522378: 10 Feb : W .8 Mar. :  
 Ann , LALITA : 1992.

**BAJRACHARYA BIJAY (MPHF):**  
 Jeweller: Gems Jewellery Industries (P)  
 Ltd, Naya Baneshwor GPO 1807,  
 Kathmandu: Res, Shree Durbar Marg,  
 Pulchowk-3, Lalitpur: Ph, (O) 212791(R)  
 524586/526738 (F)226822: B 23 Aug:W .2  
 Mar: Ann.RAJANI: Serv. D, VP :1986.  
 P: 1993

**BAJRACHARYA (Dr) HOM RAJ (PHSM)**  
 :Medical- Acupuncturist: Patan Clinic,  
 Chhaya Bahal, Lalitpur-21 :Ph 521559 :B.  
 16 Aug: W. 24 Feb : Ann . Dr. DHUWAN  
 :Serv. D. VP. P : 1986 .

**DHITAL VISHNU PRASAD (PHSM)**  
 :Food and Agricultural :Shree Durbar Tole,  
 P.O.Box 41, Lalitpur, Nepal :Ph (R)  
 521024 (F) 521013 B, 15 Apr :W .16 Feb :  
 Ann . VIJAYA LAKSHMI :1992.

**DIXIT KAMAL MANI (PHF) :** Sr. Active  
 (Belles Letters): Madan Puraskar  
 Pustakataya, Sri Durbar Tole, Lalitpur:Ph  
 (O) 521014(R) 521889 (F) 521013: B 2  
 Sept.: W 11 June : Ann . ANJU : Serv. D.  
 SA, DCM :1986.

**GYAWALI BACHAN :** Tourism Marketing  
 Hotel Oasis, Pulchowk, Lalitpur PH. (O)  
 525015 (R) 524138 (F) 521291 :B. 26  
 Dec. W. 4 Apr .: Ann. BHAVANA : 1992

**GYAWALI CHANDRA SHEKHAR (**  
 MPHS) Hotelier :Hotel Narayani  
 Pulchowk, GPO Box No. 1357,  
 Kathmandu: Res. Sri Durbar Tole,  
 Pulchowk, Lalitpur: Ph(O)521711/1442 (R)  
 521311. (F) 521291 :B.14 Nov.  
 W. 20 Jan: Ann . BULU :Serv. VP:1986.

**GYAWALI LOCHAN :** Trekking Agent :  
 Nepal Trek House, Patan Dhoka, Lalitpur  
 :Ph, (O) 522871/5018 (R)521311.  
 (F)521291. B. 12 Nov : W. 30 Jan :  
 Ann. SANGITA : Serv. SA : 1986.

**HALWAI NARAYAN GOVIND :** Civil  
 Engineer : Multi Disciplinary Consultant  
 (P) Ltd. Kopundole, GPO Box 5720,  
 Kathmandu : Res , Thasikhel , Lalitpur-5  
 Ph: (O) 523103/5076 (R) 521364;  
 (F)523103 :B 4 Oct : W 10 June:Ann.  
 MUNU :Serv. SAD. S: 1987.

**KAYASTHA MATSENDRA LAL (MPHF) :**  
 Architect : Mr , & Mrs.M .L . Kayastha &  
 Associates, Chandralays, Kopundole,  
 Lalitpur-1 :Ph (O) 523758 (R) 524758 :B.  
 25 May : W . 7 July : Ann CHANDRA  
 LEKHA Serv. S . P . 1986.

**LAKHEY SURESH CHANDRA :**  
 Economist: UNDP/LO, POB 107 ,  
 Lalitpur- Res, Sanepa, Lalitpur-1 : Ph (O)  
 414550 (R) 521399 :B, 15 Aug : W , 11  
 May : Ann: JANA: Serv, D: 1986 .

**MAINALI BISWA KANT :**  
 Legal Consultant : Mainali Law Office,  
 Ram Shah Path, GPO Box 1669  
 Kathmandu :Ph. (O) 228025(R)416119 :B.  
 15 July : W , 7 July: Ann . SABITREE  
 Serv. S, D. VP .P: 1986.

**NYACHHYON KAMAL :**  
 Heavy Textile Mfg. Mansu Industries  
 (P) Ltd, Patan Industrial Estate, Lalitpur  
 Res 548 Lagankhel Lalitpur : Ph (O)  
 522202/ 521891 (R) 521167 (F) 527167 ,  
 B . 15 Jan W , 15 Feb.  
 Ann ,SULOCHANA :Serv I 1986

**PANDEY RABINDRA RAJ (MPHF) :**  
 Airline GSA : Everest Excess Tours &  
 Travel (P) Ltd, Durbar Marg, GPO Box  
 482 , Kathmandu Res Sanepa , Lalitpur-  
 1 : Ph . (O) 220759 (R) 521652 (F)  
 226795 : B . 16 Apr : w . 19 Feb: Ann  
 CHANDRALEKHA : 1990 .

**PRADHAN MADAV LAL :** Medical  
 Technologist : Tribhuvan University,  
 Teaching Hospital, Maharajgunj,  
 Kathmandu: Res. Tahdhoka,  
 Purnachandi,  
 Lalitpur, Ph (O) 412404/303 (R) 524700 :  
 B, 17 Dec: W , 10 Mar : Ann MUNA:  
 Serv. D,P, S,D: 1986.

**PRASAI (Dr) BHISMA RAJ :** Pathologist:  
 Tribhuvan University Teaching Hospital  
 Maharajgunj , Kathmandu: Res. Ka 1/47,  
 Kopundole, Lalitpur: Ph (O) 412404 (R)  
 521910 (F)227372; B. 6 July: w. 17 Jan:  
 Ann. SUBHADRA :SERV. D,P. DCM:  
 1986.

**PRASAI PRAJAPATI (PHF):** Travel  
 Agent : Natraj Tours & Travels Pvt. Ltd,  
 Durbar Marg, GPO Box No. 495,  
 Kathmandu :Res: Kupundole, Lalitpur: Ph  
 (O) 222906 (R)525012 (F) 227372: B. 14  
 Jan: W. 1 Jan: Ann. SHARADA: Serv.  
 D,VP, P,GGR: 1986.

**RANA SAGAR SHUMSHER (PHSM)**  
 Traditional Handicrafts: Nepal Traditional  
 Crafts, 3, Pulchowk, Lalitpur, GPO Box  
 979, Kathmandu: Res. Kupundole,  
 Lalitpur: Ph (O) 527916 (R) 521667 (F)  
 527871 :B. 17 Feb :W .18 June : Ann.  
 BRINDA: Serv. D: 1987

**SHAH RISHI:** Engineering Administrator:  
 Secretary, RONAST, GPO Box: 3323,  
 Kathmandu: Res. Jawalakhel, P.O. Box  
 3459, Kathmandu: Ph. (O) 215316/965  
 (R) 525373 (F) 228690: B. 25 Apr: W. 23  
 Sept: Ann. SULOCHANA: Serv. SA, JS:  
 1990

**SHAKYA PUSHKAR MAN:** Carpet-  
 Export: Carpet House/Pulchowk, Lalitpur.  
 GPO Box 167, Kathmandu: Res. 480,  
 Pulchowk, Lalitpur-3, Ph. (O) 521335/  
 (R)527238/ (F) 521582: B. 14 Jan: 27  
 Feb.: Ann. RITA: 1993

**SHAKYA SIDDHI BAHADUR (PHF):**  
 Bronze Expert: Sri Durbar Marg,  
 Pulchowk, Lalitpur, PO Box 1142,  
 Kathmandu: Ph. 521525/6792 (F) 525465  
 B: 15 July: W 14 Feb.: Ann. CHAITRA  
 LAXMI: Serv. JS. D: 1988

**SHAKYA TIRTH MAN:** Legislative  
 Drafting: Secretary, Nepal Law Reform  
 Commission, Jajal, Kathmandu: Res. 17  
 Hakha Tole, Lalitpur-12 Ph (O) 221496  
 (R) 522467/526033; B 21 July: W. 14 Feb:  
 Ann. NANI SHOVA: Serv: JS: 1990.

**SHAKYABANSHA NARENDRA**  
**NARSHING:** Sr. Active (Metal Caster);  
 Mahaboudha Bidyadhari Shilpa Bhandar  
 (P) Ltd., Patan Industrial Estate, Lalitpur,  
 GPO Box 2330, Kathmandu: Res. 112,  
 Mahaboudha, Lalitpur-12: Ph. (O) 521358  
 (R) 525856/1431: B. 15 Aug.: W. 15 Apr.  
 Ann. SANTA MAYA: Serv. D: 1986.

**SHILPAKAR MOTI LAL:** Wood Carver:  
 Wood Carving Industries Pvt. Ltd., Patan  
 Industrial Estate, Lalitpur, GPO Box 1264,  
 Kathmandu: Res. Jawalakhel, Lalitpur: Ph.  
 (O) 521366/5214 (R) 521447: B. 20 Jan.:  
 W. 25 Apr.: Ann. SHYAM LAXMI: Serv. T:  
 1986.

**SHRESTHA BIHARI KRISHNA:**  
 Anthropologist: Res. Chakupat. Patan  
 Doka, Lalitpur. GPO Box: 5720,  
 Kathmandu: Ph (O) 521773 (R) 522173:  
 B. July 26: Serv. D: 1992.

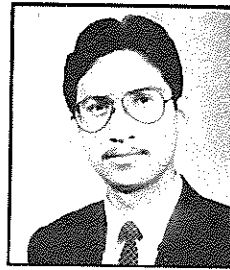
**SHRESTHA GANESH RAJ:** Rubber  
 Recycling: Pashupati Rubber Industries:  
 Patan Industrial Estate, GPO Box 1970,  
 Kathmandu: Res. Sincinity Lagankhel,  
 Lalitpur, GPO Box 1970, Kathmandu: Ph.  
 (O) 522157 (R) 524780: B. 22 Oct: W. 7  
 Jan.: Ann. BIJAYA LAXMI: 1993.

**SHRESTHA RENU:** Education Primary:  
 Saheed Dharma Bhakta Primary School,  
 Nakhu, Lalitpur, GPO Box 1669.  
 Kathmandu: Res. Lagankhel, Lalitpur, Ph.  
 (O) 522239 (R) 525677: B. 12 Feb: 1992.

**SHRESTHA SANTA KUMAR:** Liquor  
 Manufacture: Island Jungle Resort, Durbar  
 Marg., GPO 2154, Kathmandu: Res.  
 Dhobighat, Jawalakhel, Lalitpur: Ph. (O)  
 225615/220162 (R) 521745 (F) 223814 B.  
 5 Nov.: W. 3 May: Ann. NIRMALA: 1992.

**THAPA DHRUBA:** Carpet Mfg.: Narayani  
 Carpet (P.) Ltd. Hotel Narayani Show  
 Room, Pulchowk, Lalitpur: Res. 4/159,  
 Jawalakhel, Lalitpur: PH. (O) 521442 (R)  
 524999: B. 22 Apr.: Serv. T: 1986.

## NEW MEMBERS



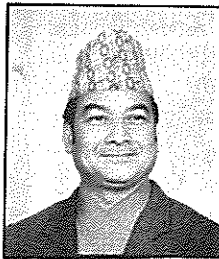
**REGMI (DR.) PRAKASH RAJ:**  
 Cardiologist: Department of  
 General Medicine, Bir Hospital,  
 Kathmandu: 3/115, Dhobighat,  
 Lalitpur, Nepal: Ph. (O) 221119  
 (R) 525536: B. 30 June: W. 15  
 April: Ann. **UPSANA:** Serv. S.  
 (Chitwan): 1990



**SHAKYA INDR A BAHADUR:**  
 Traditional Ornament Manu-  
 facturer: Hakha Tole, Lalitpur-  
 11, GPO Box: 791,  
 Kathmandu: Ph (O) 212567 (R)  
 526005/5949: B. 21 Oct: W. 25  
 Mar: Ann. **SHUKHA SAGAR**  
**SIDDHI SHAKYA:** 1993



**NEUPANE TULSI:**  
 Economist: Ministry of Finance,  
 Bag Durbar, GPO Box 2314,  
 Kathmandu: Jhamsikhel,  
 Lalitpur-1, Nepal: Ph (O)  
 222156 (R) 522320: B. 20  
 Mar.:W. 16 Jan: Ann. **KA-**  
**MALA:** Serv. D: 1986



**SHRESTHA YAGYA**  
**BAHADUR:** Revenue  
 Consultant: Chakupat, Lalitpur,  
 Nepal: Ph (R) 523753/651: B.  
 29 Apr.: W. 19 Feb: Anne.  
**MARY:** Serv. **SGT:** 1993.



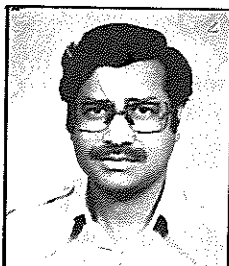
**KOHLI (MRS.) REEMA:**  
 Beautician: Narayani's Herbal  
 Beauty Clinic, Narayani Hotel,  
 Pulchowk, GPO Box 1357,  
 Kathmandu: 1/144 Bhakundole,  
 Lalitpur GPO Box: 2878,  
 Kathmandu Nepal: Ph (O)  
 525016 (R) 522162 (F) 521291:  
 Husband. **RABINDRA KOHLI:**  
 1992



**PRADHAN PRAFULLA MAN**  
**SINGH:** Urban Development  
 through Local Efforts, New  
 Baneswor, GPO Box: 1457,  
 Kathmandu: Pulchowk (Behind  
 Acheswor Maha Bihar),  
 Lalitpur-3, Nepal: Ph (O)  
 225378/16835/17869, (R)  
 524522, (F) 225767: B. 8 Oct.:  
 W. 3 Mar: Ann. **SAROJINI**  
**LATA:** 1994



**RANA JAGDISH (PHF):**  
 Senior Active (Literary Writing):  
 Trikuti, Battispatali, GPO Box  
 1763, Kathmandu: Ph (R)  
 472743: B. 18 August: W. 16  
 July: Ann. **BHUVAN:** Serv.  
 District Governor, District 3080:  
 Joined. 1974 (Rotary Club of  
 Simla, India District 3080)



**KOHLI RABINDRA KUMAR:**  
 Consumer Goods Distribution:  
 1/144 Bakhundole, Lalitpur,  
 GPO Box 2878, Kathmandu,  
 Nepal: Ph (R.) 522162: B. 9  
 Aug: W. 13 Mar: Ann. **REEMA:**  
 1985.



**DR. (MRS) KANTI GIRI**  
 Gynecologist: Prasuti Griha,  
 Thapathali, Kathmandu.  
 Res: Jyoti Sadan 320  
 Pulchowk, Lalitpur- 3.  
 P.O.Box: 9374, Kathmandu,  
 Nepal. Ph (O) 211243, 214205  
 (R) 521316, 5217896: B. Mar.  
 7. J. 1994.



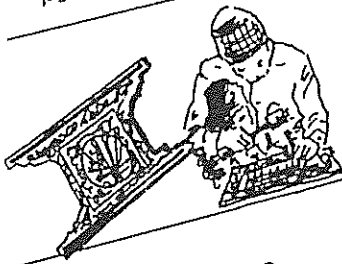
### BRONZES

We produce more than a hundred icons of different forms and sizes in bronze. Figurines of Gods, Goddesses, stylised as well as realistic animals and traditional designs in pots, pans, jugs, bells, vajra - you name it - are all available.



### WOOD WORK

The century old tradition of wood-carving is brought to life by our wood-carvers. The famous peacock screen window, the owl, elephant and horse and many other designs can be made to order in any shape and size.



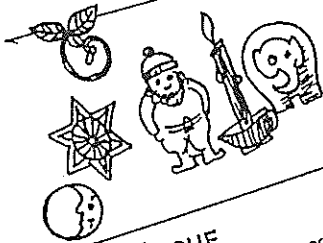
### SILVER ORNAMENTS

From ear-rings, rings, bracelets in silver, to necklaces, belts and buckles in beads and copper is yours to pick and choose.



### CHRISTMAS GIFTS

Looking for something special for your loved ones? Each set of gleaming box or animal make an exquisite filigree present. Christmas tree ornaments exclusively designed by us will make your Christmas even more memorable.



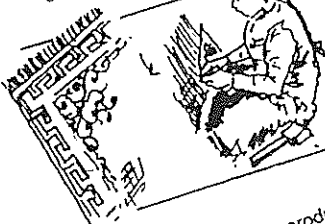
### PAPIER MACHE

Paper products such as writing pads, cards, diaries etc., for everyday use papier-mache masks make wonderful decorations or souvenirs reminding you of the legends and practices of Nepali cultures and traditions.



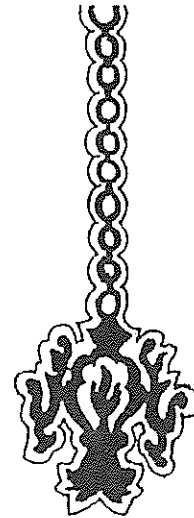
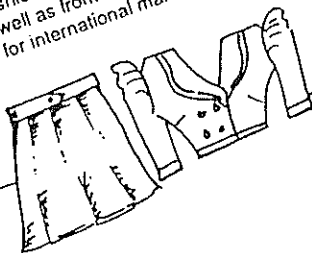
### CARPETS

The colours and designs are yours to choose. We produce a whole range of carpets using traditional motifs as well as modern designs in different sizes.



### GARMENTS

For your fashionable tastes we produce garments using Nepali fabrics as well as from outside. We also manufacture range of garments for international market.



## NEPAL TRADITIONAL CRAFTS PVT. LTD.

(Estd. 1964)

Kupondol Heights,  
Lalitpur  
Nepal

G.P.O. Box 979  
Kathmandu, Nepal

Telex: 2322 BLUSTR HP

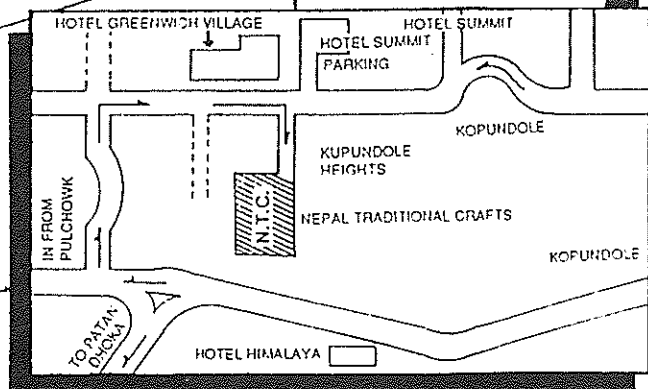
Fax: 977-1-527871

Tel: 527916

523608

521667

Cable: EXPORTISE



Please visit our showroom at Kupundole Heights. Plus you can watch our artisans and craftsmen at work reproducing the various objects de' Arts.

## WE REMEMBER .....

**R**otarian *Surendra Raj Sharma* was a member of Rotary Club of Kathmandu and Charter President of Rotary Club of Patan (RCP) in 1985. At the wish of fellow rotarian he had to stay on as President of RCP for another term in year in 1986-1987. He was a very dedicated Rotarian, was classified as Economist - contributed in Consultant and establishing RCP as a genuine social service institution.



Rtn Sharma, born on April 2, 1931, had his early political career as President of the Student Union of the country during 1947 to 1952. He obtained his Master Degree in Economics from Lucknow University. He started his career as a teacher in Tri Chandra College in 1954. He joined the government as Director of Department of Information in 1955. With his proven administrative capability, he later served as Secretary in various Ministries which included Works and Transport, Communication and Information, Water Resources and Food and Agriculture. He retired from Government service in 1974. During his tenure in the government, he also served as Chairman of the Board of Directors of Royal Nepal Airlines Corporation, Transport Corporation, Food Corporation, Dairy Development Corporation, Agriculture Development Bank and Janakpur Cigarette Factory. His services were recognized with prestigious decorations as Gorkha Dakshin Bahu (Second Class) and Commander of the Royal Victorian Order of United Kingdom. A few years later he was again brought in as Secretary and thereafter as Advisor to the Prime Minister Mr. S.B. Thapa from 1979 to 1982.

He had been a Consultant to a local Consulting Firm (IDS). He had written a number of articles on

current political, economic and social affairs which were published in local papers and magazines. He had to his credit two publications, namely, "Swami Vivekanandkokehi Bichar haru" in Nepali (1985) and "Political Analysis of 2047 Election": (1990).

Besides being a dedicated Rotarian, he was actively engaged in other social services activities as well. He had been Executive Member of Nepal Red Cross Society and Nepal Disabled Association. He had also been the Founder President of "Save the Bagmati" Campaign.

He was widely travelled all over the world. He had been a member of entourage during Prime Minister Tank Prasad Acharya's State visit to India (1954), Prime Minister BP Koirala's State Visit to India (1960) and High Level Delegation to United Kingdom led by Mr. Girija P. Koirala (1961).

Rtn Sharma, passed away on June 18, 1994 and is survived by wife, two sons and one daughter.

Mr. Sharma will be long remembered for his enchanting Rotary fellowship based on not only for his dedication but also the wide variety of experience as Secretary in the government. RCP had wished Rtn Sharma to compile his biography which would have benefitted the fellow Rotarians and countrymen as well. Some of his experiences shared with RCP are reproduced below:

- It is surprising to know that there used to be representation of the Indian Embassy during all the HIMGN Cabinet meetings during the early years of democracy in the country.

- During Dr. KI Singh's premiership, a Secretary once briefed him about one of his staff. Dr. Singh ordered the Secretary to instant dismiss concerned the staff. The Secretary reluctantly prepared the dismissal letter and got the Premier's approval. However, Mr.

Surendra R. Sharma surprised to find that Dr. Singh was not happy with the Secretary either and therefore issued a dismissal letter also to the Secretary instantly. It was Mr. Sharma's unpleasant duty to deliver the dismissal letter to the Secretary who at the time he was busy consoling the staff just dismissed. Such were the nature administration in the early years of democracy.

- Mr. B P Koirala had been tipped off by several persons about King Mahendra's takeover plan which Mr. Koirala was not prepared to accept due to his confidence of being elected by two third majority.

- Use of Nepalese Rupees for all transactions, all over Nepal, replacing Indian currency in the terai district was a most nationalistic achievement.

- Mr. Sharma was in a great dilemma once when he learnt that his flight from Tokyo will have few hours stop over at Taiwan. Just recently, had reluctantly taken action against two HMGN officers who landed at Taiwan for a few hours on a similar flight and were persuaded by Taiwanese Official to spend a few days there as state guests and were later quoted as having made statements against People's Republic of China which was recognized by Nepal as the only legitimate government of China. Mr. Sharma was genuinely afraid to set his foot on the island. But his baggage had already been abroad the plane which is seemed to leave him little alternative and was ready for departure. As Mr. Sharma frantically made last minute effort to get him luggage off loaded, luckily his status as a Rotarian was recognized from his Rotarian Lapel pin by a fellow Japanese Rotarian, who happened to be a high officer at the Airport. Instantly he went out the way to help Rtn Sharma by detaining the plane off loading his baggage and sending him off safely by another airline. This was an exemplary gesture of a Rotarian to fellow Rotarian brought together by Rotary Lapel Pin.

## WE REMEMBER .....

**R**otarian *Nandram Bhagut Mathema* was an active member of Rotary Club of Patna since 1987. He had served as Community Director and will be greatly remembered the fellow Rotarians for his untiring efforts to mobilize the resources and ensure coordination for the successful implementation of Rotary projects.



Mr. Nandram Bhagut Mathema was born on April 26, 1922. He stood second in merit in SLC examination. He could not continue his study in Intermediate Science due to prolonged illness. He joined US Government service as the Librarian and Administrator in the American Library in Kathmandu in 1952 and continued till his retirement 22 years later as a pensioner of the Government of United States of America. He was in USA during 1958-1959.

Mr. Mathema was an active social worker. He was the Founder Member of Nepal Jaycees. Rtn Mathema was a member of Nepal Disabled Association (NDA) and was its Deputy Secretary General till his last day. He was a member of the governing board of Kanti Ishwari Vidhyalaya since its inception. He had been associated with numerous social service activities and was a true believer of Yoga and practiced it regularly.

During his tenure as Community Service Director, Rtn Mathema had been instrumental in successfully

launching three community projects including resource mobilization and in coordinating with local beneficiaries, technical support team and donor agencies. These projects are briefly described below:

- Construction of Adult Orthopaedic Hospital (16 bed), at Jorpati, Kathmandu at a cost of about Nrs 12 million with support of RI District 7090 of Canada/USA. His untiring persistence for this project was quite obvious and on repeatedly briefed the progress of the funding status and Hospital construction even when they seemed not too were keen to go to those details. He never failed to give due credit to those who helped the Project. The entire credit for the completion the hospital must go to Rtn Mathema. To that end, RCP has proposed to NDA to dedicate the Hospital to Rtn Mathema and install his bust in its premises.

The second phase of the Hospital Project to refurbish the hospital is on the offing, other fellow Rotarians are taking follow up actions. The third phase to run and maintain the Hospital had also been given due consideration by NDA. Let us all strive to fulfill Rtn Mathema's dream to see the Hospital smoothly running.

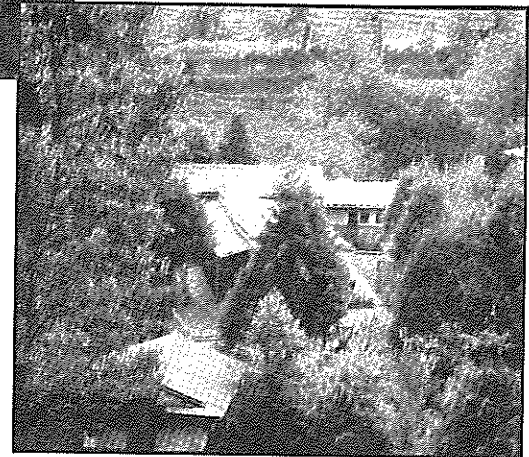
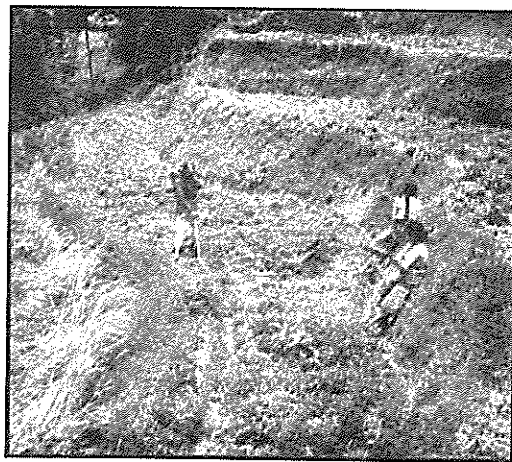
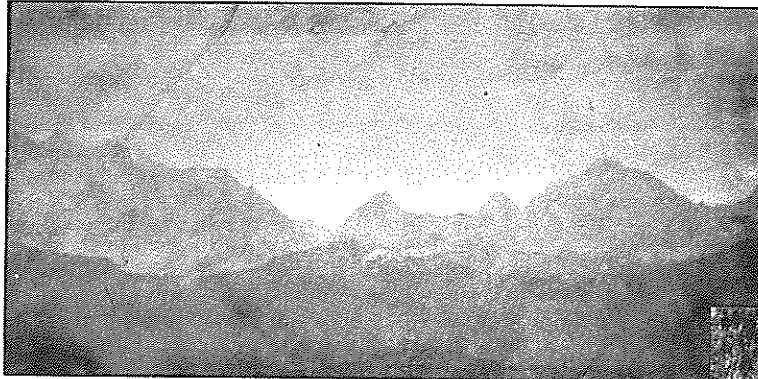
- Construction of 6,500 liter water tank and a bus stand at Thecho, Lalitpur. The water tank has been strategically located at the cross road to Dhapakhel and serves hundreds of local people. Every Rotarian passing through Thecho is proud to always find a number of people using the tank and waiting at the bus stand. The tank and bus stand are maintained by the local

people. Rtn Mathema had persuaded Rtn Jim Sinclair of Canada to mobilize US\$ 1000 for this project and local beneficiaries for matching donation.

- Construction of extension of primary school building with the addition of two class rooms at Dhapakhel, Lalitpur.

Rtn Mathema was frustrated when the fund earmarked for his tube well projects at Janakpur was diverted to other project without his knowledge. Rtn Mathema was not also happy to see tens of thousand of rupees spent on dinners every year which could have been utilized to undertake a few social service projects. Rtn Mathema would have been happy to see only two dinners proposed each year. He believed in transparency, proper communication and documentation of all project matters including movement of funds. He used to get upset to see the board meetings spend valuable time on discussing only administrative procedures rather than the larger issues of plans, policies, project formulation and resource mobilization.

Rotarian Mathema is survived by one son and one daughter as he left prematurely on April 21, 1994 for his heavenly abode. All of us pray for the peace of his soul and the fulfillment of his dream, the Hospital Project.



## NAGARKOT COTTAGE

*takes the pleasure of inviting you to  
experience the simplicity of village life and  
Nature's splendour of Nagarkot.*

**Date:** Open

**Time:** As per your convenience

**Venue:** Nagarkot

**R.S.V.P. Natraj Tours & Travels Pvt. Ltd.**

Ghanta Ghar, Durbar Marg, Kathmandu, Nepal.

Tel: 222532, 222014, 222906.

Fax: 977-1-227372, Nagarkot - 280863

*We are very proud to say that*

Many make legends out  
of our handwoven  
woolen carpets

*Now we offer*

Wide range of all exportable items  
from Nepal . . . in one roof.

*Export enquiries solicited*

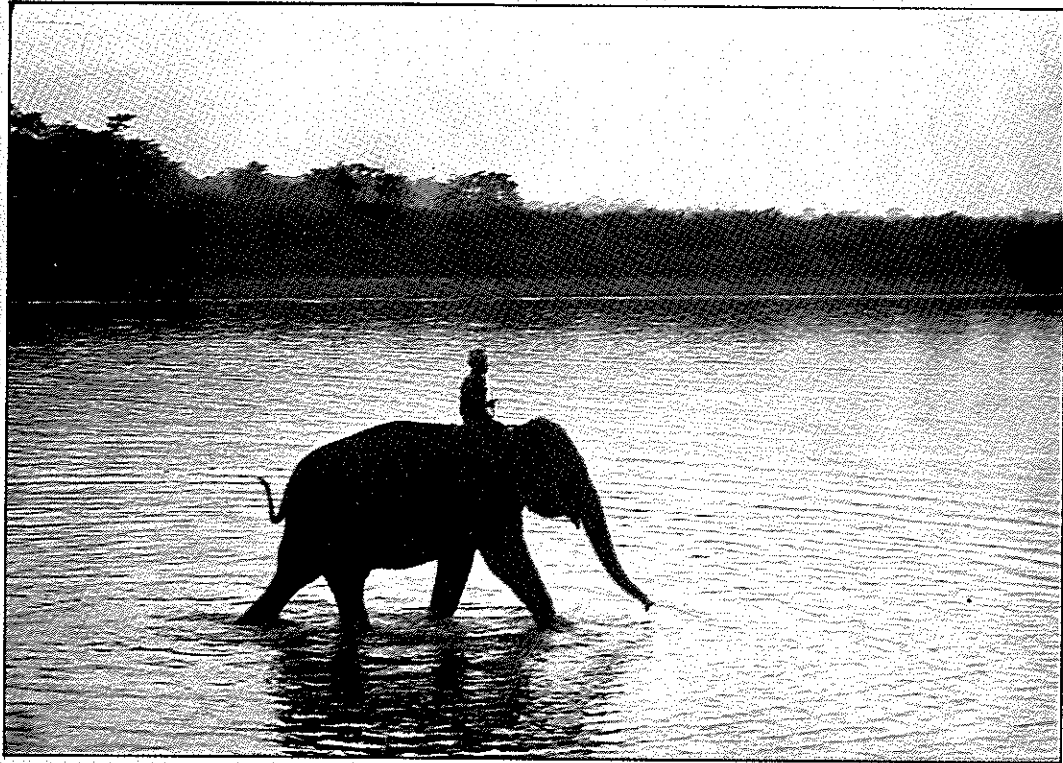
*We have a very good stock of selected  
Carpets for you to choose*

For details please contact:



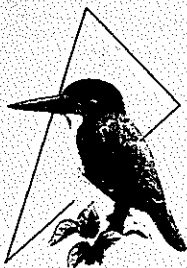
6/83 Pulchowk, Lalitpur - 3, GPO Box 1215, Kathmandu, Nepal.  
Tel: 527238, 521335, 523492. Fax: 977-1-521582





**6:00 PM: THE LAST OF OUR  
ELEPHANTS LEAVE THE  
NATIONAL PARK. *NATURALLY.***

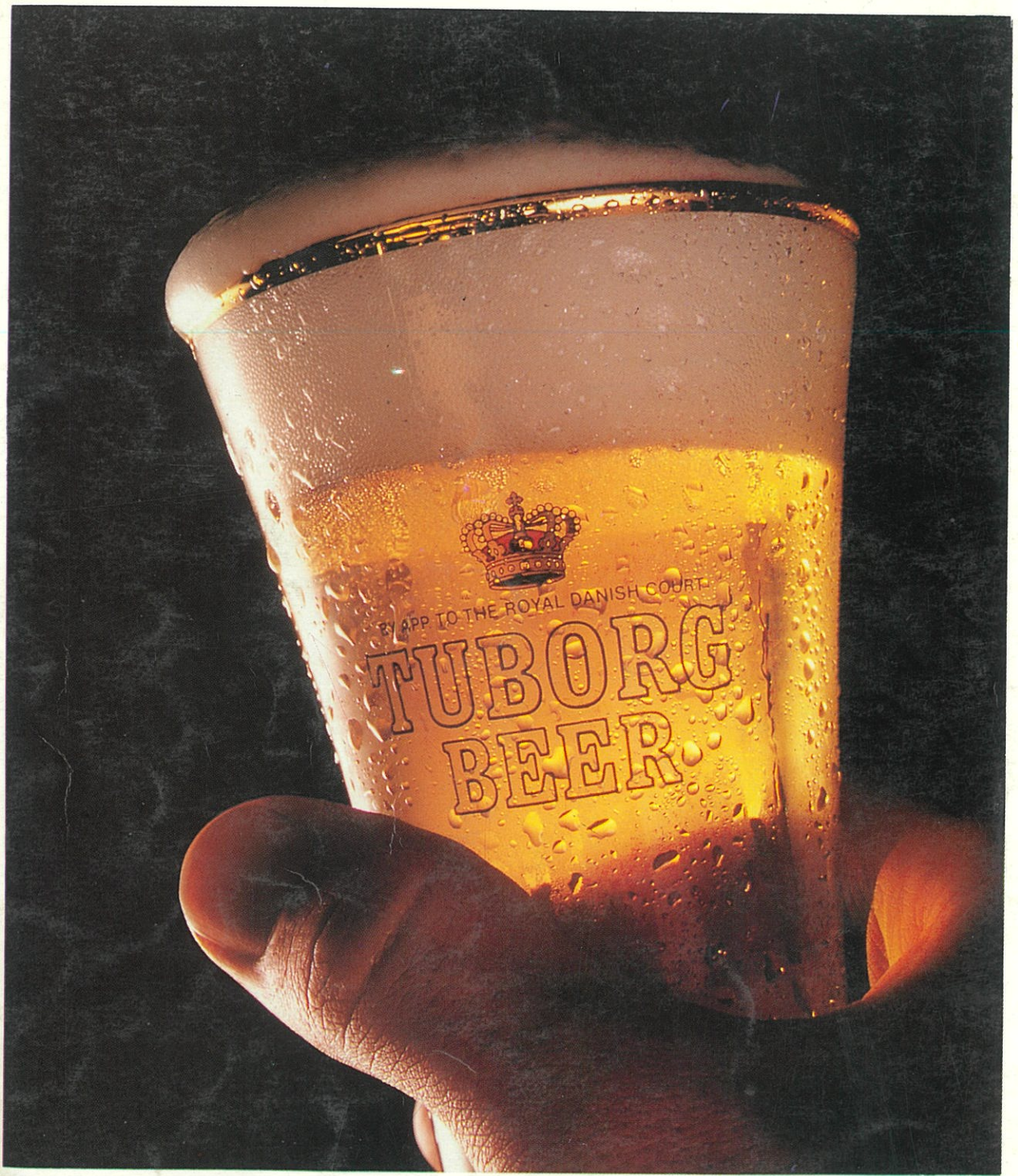
**Conservation begins with me.  
Help protect our natural heritage.**



*Safari Narayani*  
**Chitwan, Nepal**

GPO Box 1357, Kathmandu, Nepal. Fax: (01) 521291





**TUBORG ... WHEREVER YOU ARE**