

LALIT DHARA SOUVENIR ISSUE

GRS

ROTARY



DISTRICT 3290,
CLUB NO. 23126

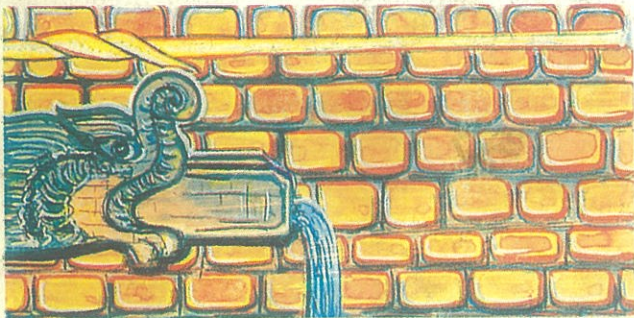
CLUB OF PATAN

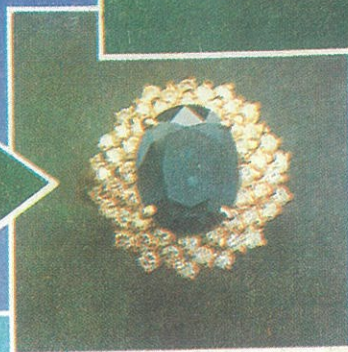
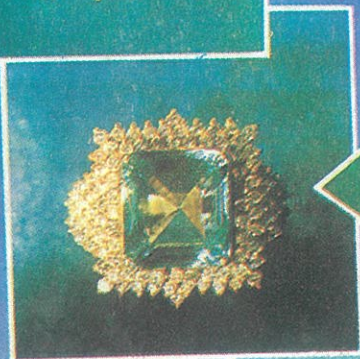
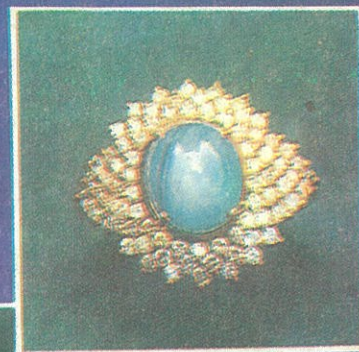
11th Installation Ceremony



PRESIDENT & MEMBERS OF
ROTARY CLUB OF PATAN
WITH BEST COMPLIMENTS OF
TEHMAS R. MANEKSHAW
DISTRICT GOVERNOR 1996-97
R.I. DISTRICT 3290

ललित धारा





Gems & Jewellery

Manufacturer & Exporter



Mailing Address

P.O. Box 1807, Naya Baneshwor, Kathmandu, Nepal.
Tel.: 524586, 478753, Fax: 226822, 526738

*Office Bearers of
The Rotary Club of Patan
1996-97*

Rtn. Vishnu Prasad Dhital	President
Rtn. Tirtha Man Shakya	Imm. Past President
Rtn. Rabindra R. Pandey	Vice President & President-elect 1997-98
Rtn. Narayan G. Halwai	Hon. Secretary
Rtn. Pushkar Man Shakya	Treasurer
Rtn. Dr. Prakash Raj Regmi	Jt. Secretary
Rtn. Kamal Nyachhyon	Director-Club Services
Rtn. Renu Shrestha	Director-Community Services
Rtn. Dr. Krishna J. Rana	Director-Vocational Services
Rtn. Yagya Bdr. Shrestha	Director-International Services

Rtn. Ganesh Raj Shrestha Seargent-at Arms

CONTENTS

Editorial	3
Message From R. I. President: Luis Vicente Giay	4
Presidential Citation To Build The Future (1996 - 97)	5
Message from District Governor: Tehmas R. Manekshaw	6
Message from President: V.P Dhital	7
Congratulation: Tirtha Man Shakya	8
The Burden of Rotary Pin: Bihari Kr. Shrestha	9
Vocation Service Director's Report: Siddhi B. Shakya	13
Orthopaedic Hospital: Bhisnu R. Prasai	14
The Scholarship Fund: Sagar S. Rana	15
Report on International Service: Rabendra R. Pandey	19
पाटन रोटरी क्लब, समुदायिक सेवाको संक्षिप्त विवरण : डा. प्रकाश रेग्मी	21
पाटनका दुग्धधाराहरु : नरेन्द्र नरसिंह शाक्यवंश	22
Activities of Rotary Club of Patan	23
Members of Rotary Club of Patan	24
Activities of Innerwheel Club of Patan	29
Members of Innerwheel Club of Patan	30
1996-97 Executive Committee	32

Co-ordinator
Rtn. Pushkar Man Shakya

Members
Rtn. P. P. Prasai
Rtn. Narayan G. Halwai
Rtn. Gyanu R. Shakya

Published by
ROTARY CLUB OF PATAN

Printing, Design & Typesetting by
Joshi Mudranalaya (P.) Ltd.
Kwako, Lalitpur.
Ph. 521479

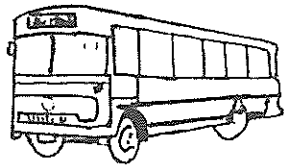
EDITORIAL

Rotary Club of Patan *Editorial Note :*

As our Club enters a new year and installs a new leadership, we intend to use this occasion for assessing our own performance or lack of it during the incoming year. This Souvenir is issued on the occasion of our 11th Installation Ceremony. Our weekly activities are always reflected in our news letter-Lalithdara. We have attempted to include reports of all our services except the club service which, unfortunates, could not be included due circumstances beyond our control. We have certainly tried to report on all our mainly activities, mainly, the construction of a hospital and the scholarship programmes which we hope the readers will find interesting.

हाती बितेका ३२ वर्षदिखि राष्ट्रलाई जोड्ने काठमा जुटेका छौं ।

२०५२ श्रावण १ गतेदेखि
यात्रु दुर्घटना बीमा शुरु
गरिएको समेत यात्री
महानुभावहरुमा जानकारी
गराउँदछौं । तसर्थ अनिवार्य
रुपमा टिकट लिनुहोला ।

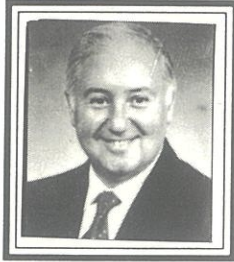


साभकाका ७० भन्दा बढी बसहरु
काठमाडौंबाट २४ रुटमा रातदिन चल्दछन् ।

नेपालगञ्ज, दाङ, बाग्लुङ, पोखरा, गोरखा, त्रिशुली,
काठमाडौं, भरतपुर, हेटौंडा, कटारी, तौलिहवा, महेशपुर,
भैरहवा, मेघौली, टाँडी, पर्सा, बीरगञ्ज, बरथहवा, गौर,
मलंगवा, जलेश्वर, जनकपुर, राजविराज ।

भरपर्दो स्तरिय र
नियमित सेवाका
लागि साभका कै
बस प्रयोग गरौं ।

साभका यातायात, पुलचोक, ललितपुर, फोन : ५२१०६४, ५२२१४६



LUIS VICENTE GIAY

President
ROTARY INTERNATIONAL 1996-97
Arrecifes, Buenos Aires, Argentina

My friends in Rotary:

Destiny is not a matter of change; it is a matter of choice. It is not a thing to be wasted; it is a thing to be achieved. On this threshold of a new century, we are at a pivotal point in Rotary's rich history. Profound technological and social changes make this an era of great upheaval.

Nobel scientist Jonas Salk once said, "Our greatest responsibility is to be good ancestors." We can best pay our own debt to the past by building a better future for new generations on the framework our forebears established.

Rotary has a vital role to play in the times that lie ahead. Our ideals are universal. Our global organizations is effective, and our programs address the basic needs of humankind. As rotarians, we are indeed architects of the future to the extent that we act on our commitment to service.

If we are to achieve our destiny, if we are to participate as architects in the 21st century, it is time now to unfold a new blueprint. We must affix our personal stamp to a design for tomorrow and **BUILD THE FUTURE WITH ACTION AND VISION.**

Our first task as architects is to give our dream for the future a solid underpinning. As a living organization, our pillars are built on action. Every service we undertake is part of our testimony that Rotary's true value lies in the work we do. Our actions have always spoken more forcefully than words.

Though the lifeblood of our service, Rotary represents an enormous force for good in our communities. Without actions, "Service Above Self" is merely an idealistic phrase. That's why full participation of every Rotarian is the only way we can genuinely **Build the future with Action.**

But we also need vision. Action without vision is often wasted, and vision without action is just a dream. Action with vision is what brings hope to the world. Vision helps us understand that we live in a world that is changing at a faster pace than ever before. Vision allows us to see human need even beyond the horizon. The more clearly we understand the way these changes affect people's lives, the better equipped we will be to build a viable future.

The future is not out there, waiting to be met. The future is here, waiting to be created. It is in our hands. Today, Rotarians can act as good ancestors by linking our ideal of service with the generations to come. Join with me as we work together to **BUILD THE FUTURE WITH ACTION AND VISION !**

Sincerely,

Luis Vicente Giay

(Source : Rotary International District 3290 Directory : 1996-97)

Presidential Citation To Build The Future (1996-97)

Dear Club President,

Your Rotary Club can invest in the future today to ensure a brighter tomorrow for generations to follow.

Each and every Rotarian can have an impact on the future—the future that we will shape for ourselves, our families, our clubs and our communities. Together we Rotarians worldwide can combine our unique individual talents with our commitment to service to

Build The Future With Action And Vision

I invite you and your club to undertake projects and activities which will help build a better today as well as lay solid foundations for the future. To focus on the positive ways Rotarians worldwide can build the future, I have identified six program areas of emphasis which deserve special attention for this year's Presidential Citation :

- Build the future by Honoring our Past
- Build the future by Strengthening Membership
- Build the future by Bringing Quality into Vocational Service
- Build the future by Preparing New Generations
- Build the future by Working for Urban Peace
- Build the future by Supporting The Rotary Foundation.

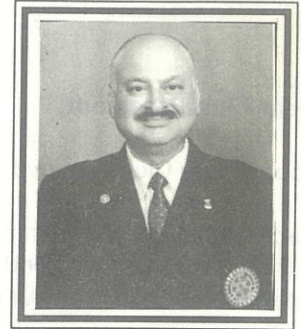
Each of the suggestions outlined on the following pages represents a step your club can take to address these important issues at the Club, Vocational, Community, and International levels. By increasing your club's participation within each of the Four Avenues of Service you can take concrete steps to strengthen the future of Rotary and the generations which it will continue to serve. As Rotarians, our potential to effect positive change is limited only by the extent to which we act on our commitment to service.

Let us seize the opportunity to **BUILD THE FUTURE WITH ACTION AND VISION**. Efforts made today will ensure that the legacy we leave to those who follow us will be one of peace, of dignity, of love. I know that with your committed leadership and active participation we can make this a year of outstanding accomplishment.

Sincerely yours,

Luis Vicente Giay
President, RI

Message



Dear Rtn. Vishnu Prasad,

I am indeed very glad to know that Rotary Club of Patan will be having their Installation Meeting on July, 1996 when you and the incoming team of office bearers shall be formally installed to lead the club in the year 1996-97.

As the leader of your club, it is now your responsibility to define the needs, set your goals and work to achieve them for the community. You will no doubt strengthen the club with meaningful activity fellowship, involvement and above all, outstanding results.

In the year ahead motivated by the R.I. Presidential theme "BUILD THE FUTURE WITH ACTION AND VISION ", mobilise your club resources and create an environment where noble thoughts, generous hearts and caring hands can be manifested.

I wish the Incoming President Rtn. Vishnu Prasad Dhital and the Incoming Office Bearers my very best wishes for the year 1996-97.

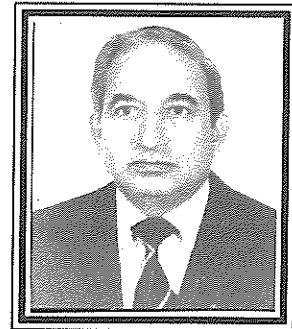
Sincerely,

(TEHMAS R. MANEKSHAW)

Rtn. Vishnu Prasad Dhital
President 1996-97
Rotary Club of Patan

ROTARY CLUB OF PATAN
District 3290

Message



" No Child should go to bed hungry " is our vision. What strategy for action we adopt and how we unite ourselves in order to achieve that aim is our immediate task. We could help produce food, build schools, provide scholarships, establish hospitals etc. and attempt to change the life style of our children for their better future we shall certainly endeavour hard to attain at least a part of our goal during the next twelve months . May I take this opportunity to appeal all Rotarians to unite and work towards 'Building the future with action and vision'.

Vishnu Prasad Dhital
President 1996/97

CONGRATULATIONS

TO : All Rotarians
From: Rtn. Tirtha Man Shakya
President (1995/96)
Rotary Club of Patan

Dear fellow Rotarians.

Let me, first of all, congratulate all the Rotarians, especially the in-coming Presidents and the Chairpersons and office bearers of different Committees of all the Rotary Clubs for the year 1996/97 and wish them every success in their endeavour to Build the Future of the Rotary and of all of mankind with "Action and Vision".

As our Club celebrates its happy Anniversary of 1996 and the installation of a new leadership for the year ahead, I would like to take this opportunity to share with you my experiences as the out-going President of the club.

While our accomplishments for the year 1995/96 has not been many, we, inspired by the gracious challenge put forth by the R.I. President Herbert G. Brown and the decision of the Task Force for the creation of separate District in the Kingdom of Nepal, have been able to sponsor two new clubs in Patan namely the Rotary Club of Patan West with 42 members and the Rotary Club of Yala-Patan with 37 members. It is happy to note that the Patan West Club has already been chartered on 27 April 1996 and that of Yala Patan has been declared a Provisional Club by the then District Governor Rtn. Alok C. Mitra of the Rotary District of 3290 on 1

May 1996. More recently, we have also succeeded in establishing a Rotaract Club in Patan. This year our club also inducted four new members, and one of them, Rtn. Gyanu Raj Shakya has also registered as a Paul Harris Fellow. It is a pleasure to congratulate all of them on this occasion.

During the year 1995/96 our club also has the distinctive honour of hosting five member GSE team from USA for a week from 17 to 23 January, 1996, the President-Elect Training Seminar (PETS) and Secretary-Elect Training Seminar (SETS) on 7 June 1996, and the District Assembly of the Rotary Clubs of Nepal on 8 June 1996. The PETS/SETS was participated by 37 Rotarians, and the District Assembly by 83, the latter representing 12 clubs of Nepal and the District Office in Calcutta. Unfortunately however, we very much missed our friends from the Rotary Club of Birgunj in both the events. I consider it my pleasant duty to express, on behalf of our club, our sincere gratitude for the opportunity to host those events and to thank all the participants including IDG Tehmas R. Manekshaw.

On the club attendance front too, it is gratifying to note that we have been able to keep its rate relatively high, with a few members always trying to attain the distinction of 100 percent. In my own case, I was able, to maintain 80 percent attendance rate at the time when I was offered the vice-presidentship of our Club for the year 1994/95. With some persistence I



brought it up to 90 percent during the year and 100 percent in 1995/96 when I also had the immense privilege of serving as the Club President. It has been my pleasant experience that increased club attendance also means more intense club fellowship, access to more information through exchanges in our meetings and interaction with our guest lecturers or simply enjoying the warmth of mutual goodwill and friendship. All of them add up to the building up of a greater cohesion in our club. It verges on being an addiction of its own kind.

However, it has also been my experience that attaining higher attendance rate is only part of the story of being a Rotarian, particularly being the office bearers of the club. It hardly needs reiterating that it is incumbent upon them to set aside a little more time for the club activities. Short of this, it is obvious that one cannot do justice to the position held by him or her in the club management. As I pass on the mantle of the Club Presidentship to the more able shoulders of my successor, Rtn. Vishnu Prasad Dhital, I realize that I have left much to be desired. It is, therefore, all the more necessary for me to wish my successors in the club management greater success in their endeavour for Building the Future with Action and Vision.

The Burden of a Rotary Pin

Thulo Parsel Drinking Water Project's Experience with the Rotary Club of Patan.

For the last three years I have been working on a drinking water project for the Tamang village of Thulo Parsel in Kavre district which was already spotted for assistance by the Rotary Club of Denver Mile High of Denver, Colorado, USA. In this joint venture project with our Club I have been working with the American Club, particularly with its member Rtn. Ernest Hempel, who partly with my assistance, had put together several clubs also in Wisconsin, USA to generate sufficient donations which, with matching grant from RI, would add up to the needed sum of 26,000 US dollars as estimated by Rtn. Narayan Govind Halwai's Multi Disciplinary Consultants (P) Ltd.

While the pace of progress has been slow, it has still been a rewarding experience to work with Ernie who has been totally dedicated to our cause and did everything necessary towards materilizing it. He regularly gave me calls halfway around the world to inform me of the latest progress or to seek any additional information necessary for them to expedite the matter on their end. It was always a pleasure to receive calls

from him in the evenings.

One such call came recently in the evening of 24 June 1996 to inform me that when they approached the RI Foundation for obtaining Matching Grant for the project, they were told that according to RI rules, no club can have more than 5 matching grant projects at the same time and that the Rotary Club of Patan had already had this number. Ernie asked me if there were one or more of those projects that were already completed but officially not reported so, so that the Thulo Parsel project could replace one of them in the RI. Since I was not aware of so many of such projects under our Club and also not quite optimistic of finding the required information through our club officials, I requested Ernie instead to contact RI and obtain the details of those projects and to kindly fax me the same to do what was needful.

To be in a position to confess to Ernie about my lack of knowledge about my own club's projects was rather embarrassing, to say the least. Therefore, hoping that the records somehow existed, the next morning I called up President Tirtha Man Sakya and ex - incoming Club Secretary Mr. Halwai both of whom denied any knowledge of such information. The only recourse, therefore, was to wait for



Rtn. Bihari Krishna Shrestha

the fax from Denver .

True to his word, Ernie called me in the evening of 26 June to give the list of the outstanding projects which by then he had already obtained from RI. He also followed up the conversation by faxing me the same the next morning . The fax showed five outstanding projects two sponsored by UK clubs and three by American club, while one of them was dated as early as 1st November 1989 and was intended "to help supply blood bags", others were between 1994 and 1996 . Now it is necessary for us to dig out information on the status of those projects and write off at least one of them to make room for the Thulo Parsel project in the Matching Grant scheme of the RI.

The delayed action of our club is not at all fair to the people of Thulo Parsel who have already been waiting for three long years in the hope that the good offices of the Patan Rotary Club would provide them some water to drink.

encyclopaedia of Rotary tradition and therefore, the " Saint Patron " of the club, referred to the admission in a speech to the club to say that the candidness of his feelings was in itself an expression of being a good Rotarian already and that the concerned Director should, therefore, feel no more remorse about it.

However, Patan Club alone probably does not deserve to be singled out in this default. During the recent District Assembly meeting of the Nepali clubs hosted by our Club, I was asked by our club management to participate in the Community Service discussion group. There were two Indian Rotarians presiding the meeting and between them they had very little time for other participants to express their opinion too. At the closing minutes of the meeting the younger of the two once more harangued on how different committees can be formed under the clubs (as if the participants there did not already know about it) to get things done in different fields of Rotary activities . At that moment, I managed to snatch a little time from him to tell him that the so-called committees did get formed alright, but they did not meet. To this, his response was a very knowing smile.

The " Monday Rotarians " in the Nepalese society:

The percapita income of the US

citizens is over 20,000 dollars and thus, even the poorest of the poor Americans could never be as poor as a poor Nepali. Therefore, the American clubs obviously do not have to deal with the kind of problems of poverty domestically that we are confronted with in our part of the world. Not only that our percapita GDP is less than US 200 dollars. It is very unevenly distributed. What little wealth is there in the country, only a handful of Nepalese have most of it. And it is some of these very fortunate Nepalese who also end up becoming members of the Rotary Clubs including that of Patan.

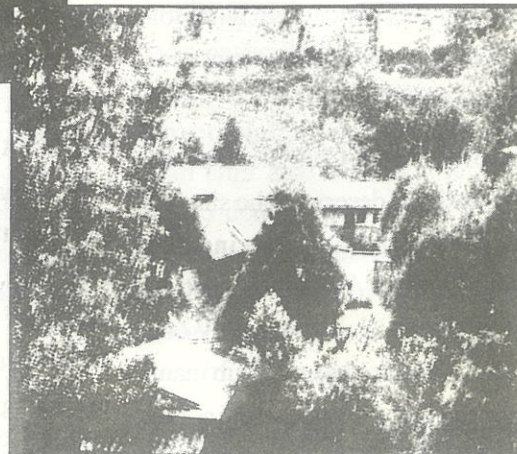
One of the motivations for joining the Rotary Clubs has been that it confers additional prestige on the members. The prestige itself has been earned by the work of the Rotary worldwide. But the Nepali members suddenly become claimants to it as soon as they join one such club. In our club discussions, a member or two would often narrate how the Rotary pin on his lapel helped him in a difficult situation in air travel abroad, or how his business contacts abroad were eased because of this prestigious membership.

It is probably also this element of international prestige that the Rotary Club of Patan, as others in the country, has been able to persuade distinguished members of the country's bureaucracy, politics,

diplomatic and intellectual community to take time out from other (probably more important) engagements and come in as guest speakers to our meetings. This is a cost that our society has borne to make our club activities succeed. But what our club and its members have done in return to our society would always remain a matter of opinion and an important moral question.

As far as I can see, three things are taken quite seriously in the club: dinners, so-called fellowships and speeches in the meetings.

I would certainly hope that the new management of our club, better sooner than later, address this issue and try to make our club a more meaningful entity in the society of which it is but an integral part. Given the fact that our Monday meetings are alone taken any seriously at all, some of us have been used to accusing ourself of being the Monday Rotarians. But the society itself might have worse epithets in mind and see us as opportunists who are out there to capitalize on the fame and prestige that we did not earn ourselves . The proverbial Nepali saying in this case could be Bagh-ko Chhala ma Shyall-ko Dain or the jackal indulging in the pomposity of threshing on the skin of a tiger.



NAGARKOT COTTAGE

*takes the pleasure of inviting you to
experience the simplicity of village life and
Nature's splendour of Nagarkot.*

Date: Open

Time: As per your convenience

Venue: Nagarkot

R.S.V.P. Natraj Tours & Travels Pvt. Ltd.

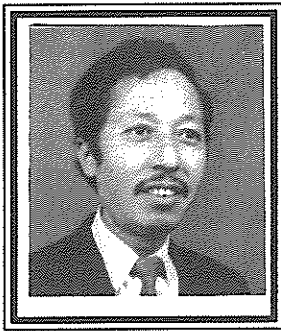
Ghanta Ghar, Durbar Marg, Kathmandu, Nepal.

Tel: 222532, 222014, 222906.

Fax: 977-1-227372, Nagarkot - 280863

VOCATIONAL SERVICE DIRECTOR'S REPORT

Rtn. Siddhi B. Shakya
Director
Vocational Services
(1995/96)



Vocational Service is an obligation of each holder of a classification in Rotary to share the ideal of Service in all the relationships of his business or profession with others who are not Rotarians.

The Board of Directors of Rotary International has now provided a new definition according to which, "Vocational Service is the way Rotary Fosters and supports the application of the ideal of service in the pursuit of all vocation."

As stated in the objectives of Rotary, Rotarians promote Vocational Service by urging and supporting "high ethical standards in business and the professions, the recognition of the worthiness of all standards in business and the professions, the recognition of the

worthiness of all useful occupations and the dignifying by each Rotarian of his occupation as an opportunity to serve."

We have all along been trying to see that good relations between the Employees and the Employer have been maintained. There has been very few problems, if any of Labour trouble. The reason being most of our Rotarians are owner of Industries in the private sector and they treat the employees in Rotary spirit. So far as other Rotarian Industrialists are concerned, they follow the Four Way Test which avoids problems.

There is not much scope of Vocational Tours in the Country. It could be possible only when we arrange for Inter-District or Inter-City Vocational Tours. We follow the motive; He Profits Most who Serves Best.

The progress report of the Rotary Club of Patan in the filed of Training is as follows:

1. Statue & Thanka Painting

Regarding the skill development for the Statue making and Thanka painting, a seven-member committee was formed under the Co-ordination of Rtn. Narendra Narshing Sakyabansha. The Teacher selected for this purpose was Mr. D.B. Lama and 11 persons in the 1st term and 32 persons in the 2nd term received good training under this Skill Development Programme.

2. Wood Carving

Rtn. Moti Lal Shilpakar has kindly provided a training of wood carving for 6 person from 24th poush 2052 to 1st Paush 2053.

3. Stone Carving

Similarly, under the Co-ordination of a resident of Bhinche Bahal, Lalitpur Mr. Lok Raj Bajracharya training has been provided to 5 person to develop the skill of stone-carving and Statue making, from B.S. 2051 Marga to till this date. It is hoped the training received by these people will make them self-reliant.

Report

ORTHOPAEDIC HOSPITAL

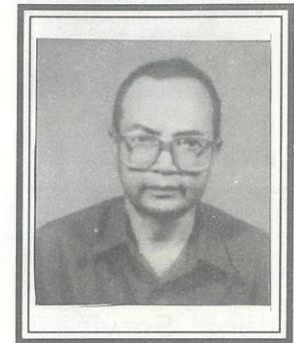
BY RTN. DR. B. R. PRASAI
COORDINATOR ORTHOPAEDIC
HOSPITAL CONSTRUCTION COMMITTEE

'Adult Orthopaedic Hospital Project' is one of the most ambitious project initiated by the Rotary Club of Patan in 1990. The original proposal intend to construct a 32 bed hospital at Khagendra Navajivan Kendra at Jorpati at the request of Nepal Disabled Association (NDA). The Rotary Club of Amherst South, New York and Hamilton AM Club of Ontario, Canada of Rotary International Dist. 7090 joined hands with sponsoring Rotary Club of Patan of RI Dist 3290. The RC Amherst South and Hamilton AM, however managed to raise only \$ 225800/- instead of \$ 500,000/- originally intended.

The Rotary Club of Patan and Amherst South decided that since there was a shortfall of fund of nearly 50 % in the original scheme the size of the bed capacity be reduced to 16 beds at the initial period and the hospital should be constructed in

such a way that another 16 bed could be easily added in future. Accordingly the foundation of the building was laid on 3rd of June 1993 by Dist Governor Mr. Bobb Mcleod of RI Dist 8090. The hospital construction was completed and handed over to the NDA by RC Patan in December 1995. With the submission of Project Close-out Report in April 21, 1996, the phase one task is over.

The second phase of the task-equipping and furnishing is being persued both by RC Patan and NDA. RC Patan had earlier requested Mr. James P. Sinclair of RC Mt. Baker, Lynden Washington (Dist 5050) for the funding of part of 2nd phase i.e. furnishing of the hospital. With the support of Mr. Sinclair, a good friend of Nepal, Rotary World Community Service Fund has been mobilised to the tune of US \$ 12,800 under the Match-



ing Grant from the Rotary Foundation. We have already received the cheque and handed over to NDA. The fund now received will be utilised in purchasing the following items;

Hospital beds with bed side tables
Mattresses
Blankets
Saline Stands
Wheel Chairs
Cruches and other hospital furniture.
Both RC Patan and NDA have to work harder to mobilise funds for the instruments and equipments. Hopefully, by the end of 1996, we will be able to commission the hospital as planned.

The Scholarship Fund

Rotary Club of Patan has, in short span of time, rendered number of outstanding services to the community. Most heart touching one is EDUCATION.

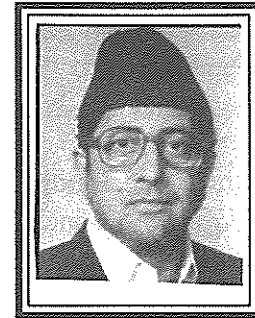
The education Trust was established in 1991 with stipend to 9 economically poor students from 8 schools in Lalitpur (7) & Chitwan (2) for 5 years (starting from 6th class to 10th - S.L.C.) in 6 years we have been able to raise just enough fund to support over 90 students. These students oth-

passed S.L.C. then we achieved cent percent have passed from the 1st lot of 9. It is a matter of great satisfaction to all of us.

However out of remaining 88 students 25 could not complete S.L.C. some girls got married and had to leave school. Others failed the exam. in between and stipend was stopped .

63 students are in our stipend today in 22 schools.

This year the committee



Sagar S. Rana

responsibility of visiting schools amongst five Rotarians and I undertook and visited seven of them, three on the outskirts of the valley of Kathmandu and the only four that are situated beyond the southern hills surrounding it, where we have offered scholarships.

The schools within the valley in the villages of Chapagaon, Lele and Chhampi are about an hours drive from the city of Lalitpur where most of us Rotarians reside. Of the other four, Bhatte - Dada and Gotikhel, in terms of time, are respectively two and four hours' of tortuous drive, Kaleshwore is about four hours climb from Gotikhel and Pyutar took us five and half hours to reach and six and a half to return from Bhatte - Dada . The locals make it in about two thirds of that time. In terms of "development" and modern conveniences they are more

See Chart

Year	No. of students	No. of School
1991	9 (including 2 through ROC)	8
1992	30	12
1994	43	12
1996	97	22

erwise would have been deprived of education. Out of 97 students seven have passed out High School; this year Umesh Chandra Ghimire from KITINI SECONDARY SCHOOL passed S.L.C. in first class with 68 percent marks. If two students of Chitwan have also

assigned to administer this fund, decided that a Rotarian should visit personally, each of the high schools (running class I to XI); meet the teaching fraternity, the students and their parents, if possible, before deciding upon the candidates for scholarship. We divided this

than a century behind Kathmandu !

I want to share with my Rotarian friends, my experience of the Pyutar trip.

I timed my trip to coincide with that of the Chief Education Officer (CEO) who is incharge of all Government Schools of Lalitpur. In view of my previous visits to the area, I could be the guide on this remote trek to this experienced and gifted educationist, who hails from the Southern plains of Nepal, and from him and his interaction with the school fraternity, I could and did learn a great deal more abouts our education system and standards.

We left after an early meal, in my 1961 model Land Rover that continues to amaze one by its strength and power. Two hours later, we left the vehicle to be driven back home by my 75 year old confidant and driver, Krishna Bir. I love him dearly, much more than the Land-rover. I am not sure whether he would return the compliments, surely the old Land-Rover remains equally close to his heart.

We then trekked down an hour to reach the high school of Bhatte - Dada, located at the bottom of a narrow bowl surrounded by rugged hills. This High School had a reasonably

good record that has suddenly deteriorated in the past few years: another article will be required for its story. So we leave it at that, and proceed with our trip to Pyutar as we did after inspection of the school and finalisation of the choice of students for scholarship.

An hour's climb took us to the main "Bazar" of Bhatte Dada holding about 25 huts/houses, a health post, sub-post office, a primary level school and about five tea cum refreshment shops. The next morning we proceeded to Asrang enroute Pyutar; as we commenced two hours of steep descent we passed via a school at 9 a.m. i.e. before the school hours and we found one of the large class rooms occupied by a relaxed pair of water buffaloes and some goats, chewing lazily on some dry grass. Amongst debris dirt and worse, quite unsuitable for human habitation

None of the schools in these parts has a guard or peon to look after the property.

Leaving behind this dismal scene, of which the DEO made careful note, we started our ascent : a steep but staeady and comfortable climb of two hours. We then reached Maajh-khanda village atop this 8000 feet mountain with a panoramic view of the Himalayas. We partook of some Daal Bhaat

Tarkari and then visited another school full of boisterous students and teachers most of whom were keen for transfer from this beautiful but lonely place. Then we descended down a precarious "goat track" that tested our balance and courage too along quite a few narrow (less than 6" wide) paths. I admired the dedication as well as great sense of humour of my companion. He is one of a few department District Chiefs posted in the District of Lalitpur and visits these distant parts occasionally.

At Asrang we meet the well known river bagmati once again, It looks beautiful from afar but on reaching its banks the water is soled and dirty with the muck flowing out of the valley of Kathmandu . By this time the sun was setting and we were joined by quite a number of curious villagers and local leaders. We spent the night with our hospitable host, the President of the VDC and his ever smiling industrious wife. Mellowed by the hard days trek, we were lulled into sleep, unmindful of the cramped quarters and the not so friendly bugs! In the morning we visited another school in this pleasant village of Lukuni before proceeding to our final destination of Pyutar. Enroute there were two more ramshackle half constructed

structures erected by the villagers for " school buildings". The residents wanted these listed to be recognised and provided with government back up not very likely in the near future. It is obvious that there is an acute shortage of funds even to maintain level of basic necessities for the existing schools.

Pyutar is one of the more "prosperous " VDCs out of nineteen that are situated in Southern Lalitpur. It grows enough food grain including rice, and some vegetables , for a balanced diet of its residents.

Therefore the condition of the highschool was a real disappointment not the dilapidated conditions which is a common feature in 95% of the schools, but the standard and level of knowledge of the students. As I accompanied the DEO in each of the ten classes, as he posed questions appropriate to their age and related to the subject they were being taught at the time, was really shocking . And it reflected in their marks, Let the figures speak.

- Out of 34 students who attended class VI four years back, only nine now remain in class 10.

The rest have dropped out.

- In the year 2051 (1993-94) three students passed in the internal exam in class XI and thus qualified to appear for the Board exam of S.L.C. Only one passed.

- Similarly in 94/95 five students qualified to appear for S.L.C. And not a single one was successful !

Several causes could be identified for this state of affairs. First, Pyutar is 4 to 5 hours trek from Bhatta-Dada; so teachers specially the good one, sare reluctant and often refuse to work there. We were told that the mathematics teacher has not been replaced for nine months ! Second, teachers who are there, specially those not from the local community, are regularly absent, And third, the local teachers seemed more interested in local politics than imparting knowledge and education, or in acquiring more which is sorely required !

Let it be said that not all the schols in this area are quite in this sorry state. Of the five High Schols in Lalitpur situated south

of the hills surrounding Kathmandu, three including Pyutar, are in similar state and two others are slightly better off. Of the seventy odd middle and primary schools, perhaps twenty may have better infrastructure but the rest are in similarly pathetic conditions.

On the trek back to Kathmandu, we were in a sad and reflective state of mind.

Imagine your child trekking one or two hours to and back from school, each day. Sitting perhaps on the dusty floor in a cramped dark room without electricity and at times even without a black board or protection of door or windows to shield them from the bitter cold of winter or slanting rains of the monsoons, and taking lessons from teachers who may be incompetent or incapacitated by the environment to render adequate teaching .

Imagine the poor child doing this for a large part of his youth life and then unable to get past SLC, or find himself unemployed at the end of it all. Yes, we too were deflated and wondered if we could be of some little help to improve the situation of the children of this most needy of our community.

WITH BEST COMPLIMENTS FROM

MR. & MRS. M.L. KAYASTHA & ASSOCIATES

Consulting Engineers & Architects

MLK Building, Kandevasthan, Kupandole, Lalitpur-10, Nepal

Tel. : 523758 / 520624, Fax : 977-1-524758

SERVICES OFFERED

The Firm is particularly qualified and offers comprehensive and integrated range of planning, design and technical services as follows :

PROJECT STUDIES

Feasibility Studies

Design Studies

DESIGN AND CONTRACT DOCUMENTS

Design for all
Architectural Works
Structural Design
Building Services Design
Interior Design
Landscape Architecture

Master Planning
Industrial Architecture
Cost Estimation and
Tender Documents
Contract Negotiation

EXECUTIVE SERVICES

Contract Administration
Supervision

Construction
Management

SURVEY & VALUATION

Surveying

Property Valuation

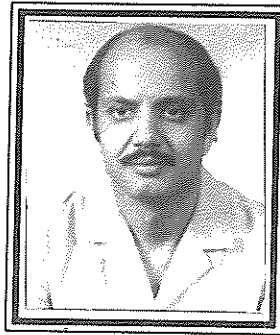
DEVELOPMENT

Development Plans

Properties

REPORT ON INTERNATIONAL SERVICES FOR THE ROTARY YEAR 1995- 1996 (BY RTN. R.R. PANDEY)

To advance understanding and goodwill among the Citizens of the World Community and to improve their quality of life is the objectives of activities undertaken by the International Services. Towards this task Rotary Club of Patan undertook the following activities during the year 1995/96 :



member Government ,
 Bureau of Land Manage-
 ment.

1. Group study Exchange programme; a group of five Rotarians was hosted from district 5400. They were :-

a) Merrill Rudd - Team Leader - Accountant , CPA

b) Ann Felice Rogers Team - Member Education / Veterinary Work

c) Joyce G. Pole - 1 Team member- communica- tions Manager

d) Steve John Popvich Team

e) Kenton Dana Mc-Cleary Team Member - Newspaper Reporter

Rotarians from the Rotary Club of Patan provided home-hospitality. They were taken around to the important sites of the valley by the hosts which they thoroughly enjoyed.

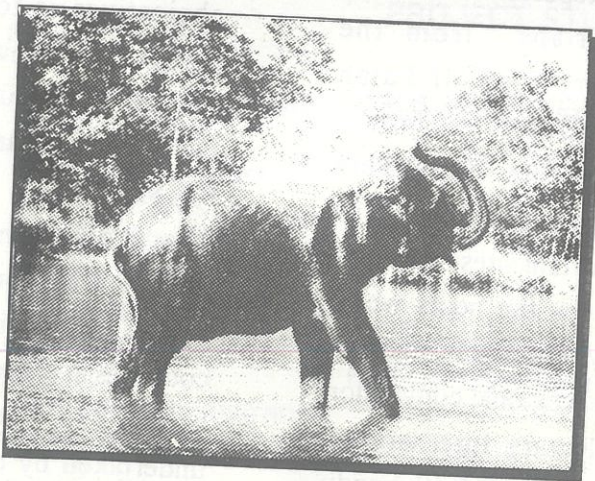
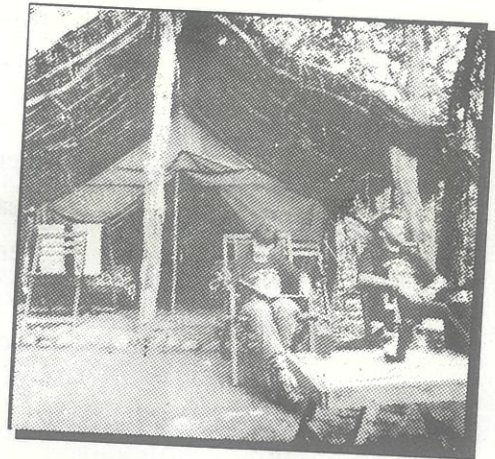
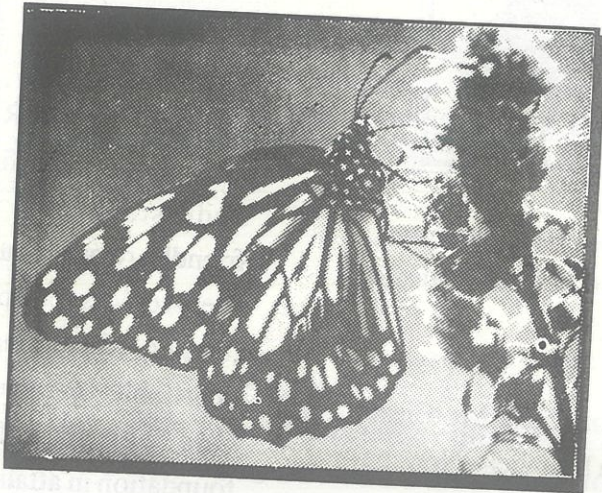
2. The Regional convention of Rotary International was held in Kathmandu from January Although the venue of the convention was shifted to Nepal at the last moment it was regarded as a successful

event and Rotary Club of Patan played a key role in its proceedings. The number of participation from our club was maximum.

3. The goal of the Rotary Foundation is to further understanding and friendly relations among the world's people by funding educational and charitable programmes. One way to help the foundation in attaining its objectives is to make Paul Harris Fellows. This year our new Paul Harris Fellow is Rotarian Gyanu Raj Shakya

4. The International Service Director visited various clubs in other countries in order to highlight the activities undertaken by our club. Likewise, other Rotarians from our club also took the opportunity of visiting other clubs during their trips abroad.

Wildlife adventure in luxury lodges and tented camps



*An exclusive wildlife
camp at a prime
location inside the
Royal Chitwan
National Park*



Island Jungle Resort

G.P.O. Box 2154 Durbar Marg, Kathmandu.
Phone: 220162, 225615, 229116
Telex: NP 2409 Alpine Fax: 977-1-223814

पाटन रोटरी क्लव, सामुदायिक सेवाको संक्षिप्त विवरण

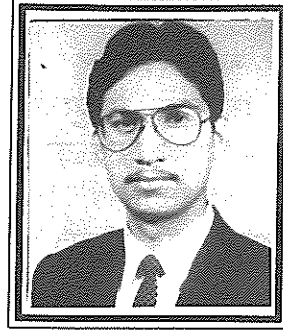
डा. प्रकाश राज रेग्मी

रोटरी क्लवको सामुदायिक सेवा (Community Service) ले अत्यन्त महत्वपूर्ण स्थान राख्छ। रोटरी क्लवले आफ्नो कार्यक्षेत्रका जनसमुदायहरु प्रत्यक्ष रुपमा लाभान्वित हुने विभिन्न कार्यक्रमहरु सञ्चालन गर्दछ। क्लवले स्वास्थ्य, शिक्षा, वातावरण जस्ता समुदायका संवेदनशील विषयहरु माथि आफ्ना कार्यक्रमहरु मार्फत् प्रभाव पार्दछ। यस्तै महत्वपूर्ण विषयहरुमा काम गर्ने भएको हुनाले नै होला सामुदायिक सेवालार्ई रोटरीको ढुकढुकी भनी वर्णन गरिएको छ।

पाटन रोटरी क्लवले आफ्नो स्थापनाकाल देखि नै यस कार्यक्षेत्रमा जनसमुदायहरु लाभान्वित हुने खालका विभिन्न कार्यक्रमहरु र योजनाहरु सञ्चालन गर्दै आएको छ। कुनै कार्यक्रमका लागि त यस क्लवले रोटरी इन्टरनेशनल पुरस्कार पनि प्राप्त गरेको छ। यस सिलसिलामा पाटनका ढुङ्गेधाराहरुको मर्मत सम्भार गर्ने प्रोजेक्ट विशेष उल्लेखनीय छ।

पाटन रोटरी क्लव सामुदायिक सेवा अन्तर्गत रोटरी वर्ष १९९५-९६ को अवधिमा निम्न लिखित गतिविधिहरु र योजनाहरु सञ्चालन भैरहेको छन् :

१) वयस्क (Adult) अर्थोपेडिक अस्पतालको निर्माण: यो प्रोजेक्ट पाटन रोटरी क्लवको सबैभन्दा ठूलो प्रोजेक्ट हो। नेपाल अपाङ्ग संघ र पाटन रोटरी क्लवको संयुक्त प्रयासमा नेपाल अपाङ्ग



संघ, जोरपाटी काठमाडौंको हाता भित्र निर्माणाधीन यस अस्पतालको प्रगति, निर्माण, कठिनाई र समस्याहरुका बारेमा क्लव मिटिङ्गहरुमा वरावर छलफल भैरखेकै छ। अस्पताल भवन निर्माणका लागि Rotary Club of Amherst South, New York District 7090 वाट १ करोड ११ लाख रुपैयां प्राप्त भएको थियो। अस्पताल भवन निर्माण कार्य सम्पन्न भैसकेको छ र अब अस्पताललाई फर्निचरहरु र औजारहरु जुटाउने कार्यतर्फ क्लवको ध्यान गएको छ र यस कार्यमा पनि उल्लेखनीय प्रगति भएको छ। यस प्रोजेक्टको विशेष जिम्मेवारी रोटरी पास्ट प्रेसिडेण्ट डा. भिष्म प्रसाईज्यूले लिनु भएको छ र उहाँको अथक प्रयास अत्यन्त प्रशंसनीय छ। यस सम्बन्धमा रो. भिष्म प्रसाईको प्रगति प्रतिवेदन भिन्नै प्रकाश गरिएको छ।

२) खानेपानी योजना :

ललितपुरको ठूलो पार्सल क्षेत्रमा खानेपानी पुऱ्याउने योजना अत्यन्त महत्वपूर्ण छ तर यो योजना पैसाको

अभावमा अपुरो रहेको छ। २४ हजार यु.एस. डलरमा सम्पन्न गर्ने लक्ष्य राखिएको यस योजनाका लागि Denver Mile High Rotary Club of Colorado, USA वाट ५ हजार डलर उपलब्ध हुने आश्वासन प्राप्त भएतापनि अन्य श्रोतको अभावमा यो योजना अगाडि बढ्न सकेको छैन। पूर्व कम्प्युनिटी डाइरेक्टर रो. विहारी कृष्ण श्रेष्ठज्यूले यस योजनाका लागि श्रोत जुटाउने प्रयासमा शुरु देखि नै लाग्नु भएको कुरा सर्वविदितै छ।

३) छात्रवृत्तिहरु :

पाटन रोटरी क्लवको छात्रवृत्ति कार्यक्रम अन्तर्गत स्कूलमा अध्ययनरत ७५ जना जेहेन्दार तर गरीब विद्यार्थीहरुलाई छात्रवृत्ति उपलब्ध गराइएको छ। यस कार्यक्रम अन्तर्गत आजसम्म सयौं विद्यार्थीहरु लाभान्वित भैसकेका छन्। छात्रवृत्ति कार्यक्रमको व्यवस्थापन अनुगमन पास्ट प्रेसिडेण्ट रो. प्रजापति प्रसाईज्यूले गर्दै आउनु भएको छ। उहाँको अथक प्रयासबाट छात्रवृत्ति कोषमा विभिन्न दाताहरुबाट आर्थिक सहयोग प्राप्त भएको छ। यसको प्रगति विवरण भन्ने प्रस्तुत गरिएको छ।

४) गैर सरकारी संस्थाहरुको सहयोग : पाटन रोटरी क्लवले विभिन्न संघ संस्थाहरुलाई सामुदायिक सेवा कार्यक्रमहरु सञ्चालन गर्न आर्थिक तथा अन्य सहयोगहरु प्रदान गर्दै आएको छ। भक्तपुर जेसिसद्वारा सञ्चालित

community rehabilitatin Project का लागि पाष्ट प्रेसिडेण्ट रो. विजय वज्राचार्यको सक्रियतामा Osaka - Midousuji Rotary Club को तर्फबाट करीव १ लाख जापानी ऐन (Yen) उपलब्ध गराइएको छ । एवं प्रकारले क्यान्सर अस्पतालका लागि Radio Therapy औजार खरीद गर्ने खानेपानी योजना सम्पन्न गर्न अर्थ अनुदान संकलन गर्ने कार्य पनि यस क्लवले गरेको छ । नेपाल हृदय रोग निवारण प्रतिष्ठान ललितपुरद्वारा सञ्चालित ललितपुर हार्ट क्लिनिकका

लागि केही औजार र सामग्रीहरु यस क्लव मार्फत जापानबाट उपलब्ध गराईएको छ ।

५) विविध :

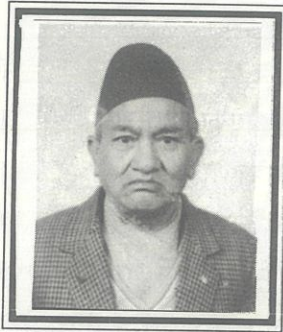
यस क्लवले सामुदायिक सेवा अन्तर्गत ललितपुर जिल्लाका विभिन्न गाउँहरुमा स्वास्थ्य शिविरहरु सञ्चालन गर्ने कार्यक्रम बनाएको थियो तर विशेष कारणवश: यस रोटरी वर्ष १९९५-९६ मा यो सम्पन्न गर्न सकिएन । आशा छ आगामी वर्षमा स्वास्थ्य शिविर सञ्चालन गर्ने कार्य को पुनरावृत्ति गर्न सकिने छ ।

क्लवका नियमित बैठकहरुमा र बोर्डको बैठकमा पनि स्वास्थ्य सम्बन्धी केही नयाँ प्रोजेक्टहरुका बारेमा छलफल भइरहेका छन् । हाम्रा केही प्रोजेक्टहरु अपुरो रहेको परिप्रेक्ष्यमा नयाँ ठूला प्रोजेक्टहरु लिन हौसला गर्न सकिएको छैन ।

रोटरी वर्ष १९९५-९६ मा पाटन रोटरी क्लव सामुदायिक सेवा क्षेत्रमा नयाँ प्रोजेक्टहरु नभित्रिए पनि पूर्व सञ्चालित अपुरा प्रोजेक्टहरुलाई पूरा गर्नेतर्फ ठोस कदमहरु चाल्ने दिशामा सफल भएको मान्नु पर्छ ।

पाटनका ढुंगेधाराहरु

- नरेन्द्र नरसिंह शाक्यवंश



१) पाटन रोटरी क्लवको स्थापनाकाल देखि नै हरेक साल कुमार-षष्ठी अर्थात् सिठी नख का दिन लगत लिने प्रचलन रहि आएको छ । तदनुसार यस पालिको सिठी नखका दिन देखिएको स्थितिको संक्षिप्त रिपोर्ट यस प्रकार छ :

२) पाटनमा ५० वटा ढुंगेधाराहरु पत्ता लागेका छन् । तिनमध्ये ६ वटा ढुंगेधाराहरु पुरिई नदेखिने भै सकेका छन् । सुन्दरीचोक तुसा हिटी लगायतका ४ वटा ढुंगेधाराहरुका मुहान मै पानी नहुँदा धेरैवर्ष देखि तिनमा पानी आएको छैन । र तिनले अशोभा मात्र बढाइएका छन् ।

३) पोहरसाल सम्म बांकी ४० वटा ढुंगेधारा मध्ये २८ वटा ढुंगेधारामा पानी आउँदै थियो, तर यसपाली २२ वटा ढुंगेधारामा मात्र पानी आईरहेको छ । यसको मुख्य कारण

४) ढुंगेधाराका पानी मुहान मंगालको संरक्षण-सुरक्षा राम्रो नभएबाटै यस्तो भएको हो । लगनखेलको ढुंगेधारामा पानी आउँछ । तर निकास बन्द हुँदा हिटीमा पानी जमी फोहरमैला थुप्रेको र पर्खालहरु पनि भत्केको हुँदा पानी लिन जान विलकुलै अप्ठेरो भैरहेको छ । यतातिर यथाशीघ्र दृष्टि जानु नितान्त आवश्यक छ ।

५) त्यस हिटीको पूर्वतर्फ ललितहल छेउमा श्री उमामहेश्वरको मूर्ति स्थापना गरी पानी आउने मुहानको सुरक्षा गरी राखेको छेउमा भएको मंगाल भत्काई

त्यसमाथि चारपाटे इनार बनाई राखेको र छेउमा नै घर बनाई राखेको हुँदा सो पानी आउने ठाउँको सुरक्षा हुन नसक्दा भएको पानी पनि भित्रबाटै लोप हुन गैरहेको छ ।

६) सो मुहानको मंगाल चाँडै नवनाएमा सधैंको लागि ढुंगेधारामा पानी आउँदैन, तसर्थ चाडोभन्दा चाडो उक्त मुहानमा विशेषज्ञहरुबाट जँचाई पानी आउने ठाउँको सुरक्षा हुने मंगाल बनाई त्यहाँबाट पाइप राखी ढुंगेधाराहरुमा पानी लानु पर्नेछ ।

सुन्दरीचोकको तुसा:हिटी लगायत टंगलहिटी, थपाहिटी समेतमा सुचारु रूपले पानी आउने हुँदा यसमा यथोचित व्यवस्था मिलाई सुरक्षा-संरक्षण गरिनु पर्छ भन्ने मेरो दृढ विश्वास छ ।

ROTARY CLUB OF PATAN

ROTARY YEAR 1995/96

SALIENT FEATURE OF CLUB ACTIVITIES

Board Meeting held : 10

Total Regular Meeting held : 50

Club Assembly held : 3

Visiting Rotarians : Foreigner : 61 Nepali : 61

Attendance : 71.3%

Rotary Club sponsored : Rotary Club of Patan west and
Rotary Club of Yala (Patan)

Rotaract Club sponsored : Rotaract Club of Hakha

TALK PROGRAMMES :

S.No.	Date	Speaker	Topic
1.	24th July	Mr. Biswa Nath Upadhyaya Rt. Hon'ble Chief Justice	Chief Guest (Installation)
2.	14th Aug.	Rtn. Indra B. Sakya	Nepalese Handicraft
3.	21st Aug.	H.E. The Ambassador of Italy	Nepali Italy Relation
4.	21st Aug.	Mr. Pravin Dixit	Liberalization Project
5.	28th Aug.	Mr. Ramesh Nath Dhungel	Reformation of Bureaucracy
6.	11th Sept.	DG.Aloke C. Mitra	R.I. Theme 1995/96
7.	18th Sept.	Rtn. Dr. Kanti Giri	Gynaecology
8.	16th Oct.	Mr. Peter Bodde DCM, U.S. Embassy	Cultural Exchange with U.S.A.
9.	23rd Oct.	Rtn. Seije Ninimia	R.C. Nishiyo Kirara, Japan
10.	13th Nov.	Rtn. Yogendra Pradhan	Redistricting
11.	20th Nov.	Rtn. Dr. Bibek Pradhan	Bhaktapur Cancer Care Center
12.	27th Nov.	Dr. Mrs. Shanta Dixit	Educator - Rato Bangala School.
13.	18th Dec.	Ms. Carrol C. Long Resident Representative. UNDP	Civilization & Humanity
14.	25th Dec.	Mr. Neer Shah	Television & Satellite
15.	29th Jan.	Rtn. Moti Lal Shilpakar	Lalitpur Finance
16.	5th Feb.	H.E. Khud V. Johansen Charged Affairs, Denmark	International Development
17.	12th Feb.	Rtn. Ralf Hammond	New Education System for Child
18.	19th Feb.	Rtn. R.R. Panday	Industrialist Nepal + India
19.	11th Mar.	Mr. Bishnu Pratap Shah	Election System
20.	18th Mar.	H.E. Esther Efrat Smile H.E. The Amb. Israel	Nepal Israel Friendship
21.	8th Apr.	DGN Tehmas R. Manekshaw	R.I. Theme 1996/97
22.	22nd Apr.	Dr. Shanta Thapalia	Property Right of Women
23.	29th Apr.	Mr. A. Timofeev Representative of ILO	I.L.O. & its activities
24.	6th May	Mr. Prithvi Raj Ligal Vice Chairman - NPC	Fiscal Policy of Nepal
25.	13th May	Mr. Bishnu Sakya	Life and its way
26.	20th May	Rtn. Dr. Tika Man Vaidya	Population Control
27.	10th Jun.	Mr. Satyendra Pyara Shrestha Governor, NRB	Reformation of Finance Policy

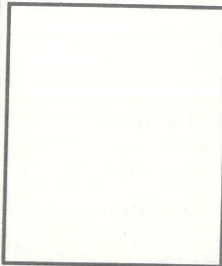
Hosted : 7th June - President Elect Secretary Elect Seminar

8th June - District Assembly



ROTARY CLUB OF PATAN

MEMBERS



(DR.) RAMCHHAYA MAN AMATYA
 ENT Surgeon : Tribhuvan University
 Teaching Hospital, Maharajgunj,
 Kathmandu. Res. Kumaripati,
 Lalitpur. Ph. (O) : 412303/412404
 (R) 522360 : 538360
 B 3 Oct : W 3 Dec.: Ann. MEERA:
 Serv. D : 1988



CHIRANJIBI ACHARYA :
 Audit General : MC Traders,
 Kopundole, Lalitpur :
 Res. Lagankhel Lalitpur 6 :
 Ph. 522378 :
 B. 10 Feb. W 8 Mar.:
 Ann. LALITA :
 Serv. T 1992



BIJAY BAJRACHARYA (MPHF)
 Jeweller: Gems Jewellery Industries
 (P) Ltd., NayaBaneswor, GPO 1807
 Kathmandu. Ph (O) 478753, 478754
 (R) 521525/526738 (F) 226822
 B. 23 Aug. W. 2 Mar Ann. RAJANI
 SERV. D. VP President 1986



DR. (MRS) KANTI GIRI
 Gynaecologist : Prasuti Griha,
 Thapathali Kathmandu,
 Tel: 232243/ 232305
 (R) Jyoti Sadan 3/320 Pulchowk,
 Lalitpur 3, Kathmandu, Nepal,
 Tel : (R) 521316, 527896 :
 B. 7th March : 1994



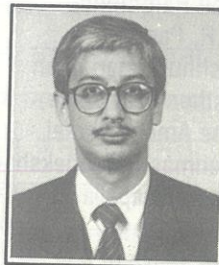
VISHNU PRASAD DHITAL (PHSM) :
 Food and Agriculture :
 Shree Durbar Tole, P.O. Box No. 41,
 Lalitpur, Nepal : Ph. (R) 521024
 (F) 521889
 B. 15 Apr. W. 16 Feb.
 Ann. VIJAYA LAKSHMI : 1992.
 Serv. D, VP



BACHAN GWAWALI :
 Tourism Marketing : Hotel Oasis,
 Pulchowk, Lalitpur :
 Res. Shree Durbar Tole,
 Patan Dhoka, Lalitpur
 Ph. (O) 525015 (R) 524138
 (F) 521291 : B. 26 Dec. : W. 4 Apr.:
 Ann. BHAVANA :
 Serv. SGT 1992



KAMAL MANI DIXIT (PHF) :
 Sr. Active (Belles Letters) :
 Madan Puraskar Pustakalaya,
 Shree Durbar Tole, Lalitpur :
 Ph. (O) 521014 (R) 536338
 (F) 521013 : B. 2 Sept : W. 11 June :
 Ann. ANJU Serv. D,
 SA, D : 1986.



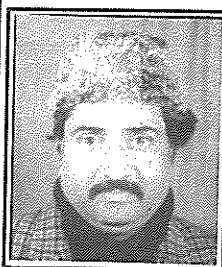
LOCHAN GWAWALI;
 Trekking Agent; Nepal
 Trek House, Patan Dhoka,
 Lalitpur : Ph. (O) 522871/ 525018
 (R) 521311 (F) 521291
 B. 12 Nov. W. 30
 Jan.: Ann. SANGITA :
 Serv. SA : 1986.



CHANDRA SHEKHAR GWAWALI (MPHF):
 Hotelier : Hotel Narayani,
 Pulchowk , GPO Box No. 1357,
 Kathmandu :Res. Shree Durbar Tole,
 Pulchowk, Lalitpur :
 Ph. (O) 521771/521442 (R) 521311
 (F) 521291 : B. 14 Nov W. 20 Jan
 Ann. BULU : Serv. VP 1986.



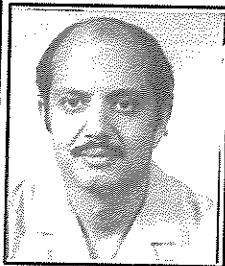
MATSENDRA LAL KAYASTHA (MPHF):
 Architect : Mr. & Mrs M.L.
 Kayastha & Associates,
 Chandralaya, Kopundole, Lalitpur 1 :
 Ph. (O) 523758, 520623 (R) 524626
 (F) 524758 : B. 25 May : W. 7 July:
 Ann CHANDRALEKHA :
 Serv. S.P. 1986



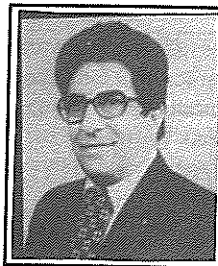
BISWAKANT MAINALI:
 Legal Consultant :Mainali Law Office,
 Ram Shah Path, GPO Box 1669,
 Kathmandu :
 Ph. (O) 228025 (R) 416119 :
 B. 15 July : W. 7 July :
 Ann. SABITREE :
 Serv. VP, P : 1986



(DR.) BHISMA RAJ PRASAI :
 Pathologist : Tribhuvan University,
 Teaching Hospital
 Maharajgunj, Kathmandu :
 Res. KA 1/47 Kopundole, Lalitpur,
 Ph. (O) 412404 (R) 521910
 (F) 227372 : B. 6 July : W. 17 Jan. :
 Ann. SUBHADRA : Serv. D, P, 1986.



RABENDRA RAJ PANDEY (MPHF):
 Airline GSA : Everest Express Tours
 & Travel (P) Ltd. Durbar Marg,
 GPO Box 482 , Kathmandu :
 Res. Sanepa, Lalitpur
 Ph. (O) 220759 (R) 521652 (F) 226795
 B. 16 Apr. :W. 10 Feb. :
 Ann. CHANDRA LEKHA : Serv. D, 1990



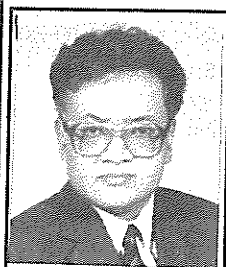
JAGADISH RANA (PHF)
 Sr. Active (Literary Writing) :
 Trikuti, Battisputali, GPO Box 1763,
 Kathmandu, : (R) Tel: 472743 :
 B. 18th Aug. :W. 16th July :
 Ann. BHUVAN ; Serv. D, G



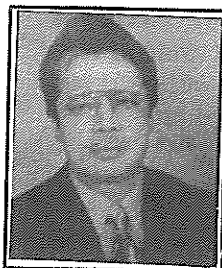
PRAJAPATI PRASAI (PHF): Travel Agent :
 Natraj Tours & Travels Pvt. Ltd.,
 Durbar Marg, GPO Box No. 495,
 Kathmandu : Res. Thapathali, Kath. :
 Ph. (O) 222906 (R) 229277 (F) 227372
 B . 14 Jan. : W. 1 Jan. :
 Ann. SHARADA;
 Serv. D, VP, P, GGR : 1986.



SAGAR SHUMSHER RANA (PHSM):
 Traditional Handicrafts : Nepal
 Traditional Crafts, 3, Pulchowk,
 Lalitpur, GPO Box 979, Kathmandu:
 Res. Kopundole, Lalitpur:
 Ph. (O) 527916 (R) 521667 (F) 527871
 B. 17 Feb; W. 18 June : Ann. BRINDA
 Serv. D, P 1986.



NARAYAN GOVIND HALWAI :
 Civil Engineer : MULTI Disciplinary
 Consultants (P) Ltd. Kopundole,
 GPO Box 5720, Kathmandu :
 Res. Thasikhel, Lalitpur 5 :
 Ph. (O) 529304/525076 (R) 521364
 (F) 523103 : B. 4 Oct. : W. 10 June :
 Ann. MUNU : Serv. D, S. : 1987.



RISHI SHAH : Engineering
 Administrator : Secretary,
 RONAST , GPO Box 3323,
 Kathmandu :Res. Jawalakhel,
 P.O. Box 3459, Kathmandu:
 Ph: (O) 215316/215965 (R) 525373
 (F) 228690 : B. 25 Apr. W. 23 Sept.:
 Ann., SULOCHANA :
 Serv. SA, JS, D, 1990.



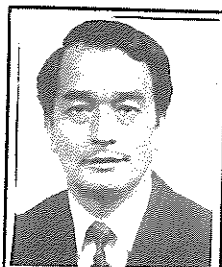
SURESH CHANDRA LAKHEY :
 Economist : UNDP/LO,
 POB 107, Lalitpur : Res. Sanepa,
 Lalitpur I :
 Ph. (O) 414550 (R) 521399 :
 B. 15 Aug. : W. 11 May :
 Ann. JANAKI :Serv. D. 1986.



PUSHKAR MAN SHAKYA :
 Carpet Export : Carpet House
 Pulchowk GPO Box 167, Kathmandu :
 Res. Man Bhawan Lalitpur,
 Ph. (O) 521335 / 527238
 (R.) 523492 (F) 521582
 B. 14 Jan: W. 27 Feb. :
 Ann. RITA : Serv. JS, T: 1993



KAMAL NYACHHYON :
 Heavy Textile Mfg. :
 Mansu Industries (P.) Ltd;
 Patan Industrial Estate, Lalitpur;
 Res. 5/48, Lagankhel, Lalitpur :
 Ph. (O) 522202/521891 (R) 521167
 (F) 527167 : B 15 Jan. : W. 15 Feb. :
 Ann. SULOCHANA : Serv. T, D : 1986



TIRTHA MAN SHAKYA : Legislative
 Drafting : Secretary,
 Nepal Law Reform Commission,
 Jamal, Kathmandu :
 Res. 17 Hakha Tole, Lalitpur 12 :
 Ph (O) 221496 (R) 522467 (F) 526033
 B. 21 July : W. 14 Feb. :
 Ann. NANI SHOVA Serv. D, VP, P 1987

ISO
C.C.

ISO

S.

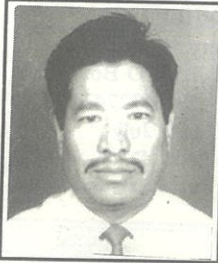
V.P.



MOTI LAL SHILPAKAR :Wood Carver:
 Wood Carving Industries Pvt. Ltd.,
 Patan Industrial Estate,
 Lalitpur, GPO Box 1264,
 Kathmandu :Res. Jawalakhel,
 Lalitpur : Ph. (O) 521366/525214
 (R) 521447 : B. 20 Jan. : W. 25 Apr.:
 Ann. SHYAM LAXMI : Serv. T, D 1986.



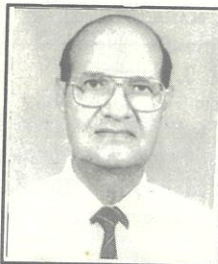
BIHARI KRISHNA SHRESTHA:
 Anthropologist :Chakupat,
 Patan Dhoka, Lalitpur, Nepal
 Ph. 522173 :
 B. 26 July Serv. D: 1992.



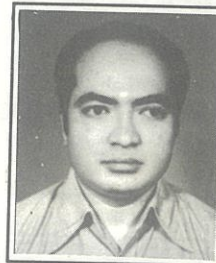
GANESH RAJ SHRESTHA :
 Rubber Recycling: Pashupati Rubber
 Industries; Patan Industries Estate,
 GPO Box 1970, Kathmandu:
 Res. Sinchahity, Lagankhel, Lalitpur.
 GPO Box 1970, Kathmandu :
 Ph. (O) 522157 (R) 524780 .
 B. 22 Oct. W. 7 Jan.:
 Ann. BIJAYA LAXMI : Serv. SA, 1993.



RENU SHRESTHA : Education Primary
 Saheed Dharma Bhakta
 Primary School, Nakhu, Lalitpur,
 GPO 8975 EPC 856 Kath.
 Res. Lagankhel, Lalitpur-6,
 Ph. (O) 522239 (R) 525677
 B. 12 Feb. :
 Serv. D, 1992.



KRISHNA JUNG RANA :
 Public Health, Prof. T.U. Teaching
 Hospital Kathmandu,
 Tel : 527007(R) Happy Height
 Tharidhunga, Dhobighat , Lalitpur
 B. 3 Aug W. 30 June.
 Ann. SANTA : 1997



SANTA KUMAR SHRESTHA : Liquor
 Manufacture : Island Jungle Resort,
 Durbar Marg, GPO 2154, Kathmandu
 Res. Dhobighat, Jawalakhel, Lalitpur
 Ph. (O) 229116/225615/220162
 (R) 521745 (F) 225615
 B. 5Nov. W. 3 May :
 Ann. NIRMALA : 1992



DR. PRAKASH RAJ REGMI:
 Cardiologist:Dept of General Medicine,
 Bir Hospital, Kathmandu, Tel: 221119 :
 (R) 3/115 Dhobighat, Lalitpur, Nepal.
 Tel : 525536 536474
 B. 30th June: W. 15th April:
 Serv. JS, D, S, : 1990.



INDRA BHADUR SHAKYA
 Traditional Ornaments Mfg.
 Hakha Tole, Lalitpur 11, GPO 791,
 Kathmandu, Nepal
 Ph. (O) 212567 (R) 525949/526005
 B. 21 Oct.: W. 25 Mar.:
 Ann. SUKHASAGAR 1993



SIDDI BHADUR SHAKYA (PHF) :
 Bronze Expert: Shree Durbar Marg,
 Pulchowk, Lalitpur, PO Box 1142,
 Kathmandu : Ph. (O) 526792
 (F) 525465 : B. 15 July :W. 14 Feb.:
 Ann. CHAITRA LAXMI:
 Serv. JS, D : 1988.



DHRUBA THAPA :
 Carpet Mfg. Narayani Carpet (P) Ltd.
 Hotel Narayani Show Room,
 Pulchowk, Lalitpur :
 Res. 4/159, Jawalakhel, Lalitpur :
 Ph. (O) 521442 (R) 524999 :
 B. 22 Apr. :
 Serv. T. : 1986.



NARENDRA NARSHING SHAKYABANSHA:
 Sr. Active (Metal Caster): Mahaboudha
 Bidyadhari Shilpa Bhandar (P) Ltd.,
 Patan Industrial Estate, Lalitpur
 GPO Box 2330, Kathmandu: Res. 112,
 Mahaboudha, Lalitpur 12 :
 Ph. (O) 524021 (R) 525856/521431 :
 B. 15 Aug.: W 15 Apr.:
 Ann SANTA MAYA: Serv. D : 1986



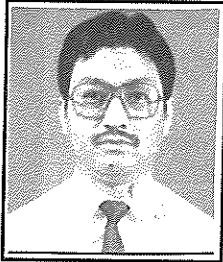
YAGYA BHADUR SHRESTHA :
 Revenue Consultant : Chakupat,
 Lalitpur 1, Nepal :
 Ph.(O) 535842 (R) 535826 :
 B. 8 Apr. : W 19 Feb.
 Ann. MARY :
 Serv. SA 1993.



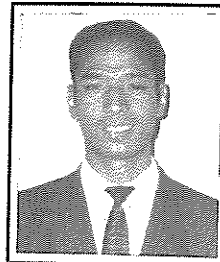
TULSI NEUPANE
 Economist: Ministry of Finance,
 Bag Durbar, GPO Box 2314,
 Kathmandu: (R) Jhamsikhel,
 Lalitpur -1 , Nepal : Ph. (O) 222156
 (R) 522320 :
 B. 20 Mar.: W. 16 Jan:
 Ann. KAMALA : Serv. D, S : 1986



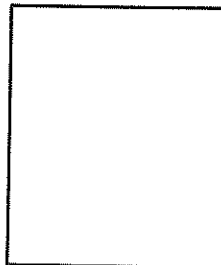
SRIDHAR SJB RANA
 Ex-Serviceman.
SRI SADMA
 3/386 Pulchowk
 Tel. 522012, 521122 (R)
 523915 (OFF)
 B. 16th Aug., W. Falgun 7th
 Anne. PADAM DEVI : 1995



GYANU RAJ SHAKYA
 179 Hakha Ward No. 11
 Tel; 524588, 526015 (R)
 244114, 231116 (off)
 B. 5 Nov. W 18 Mar.
 Ann. SUNITA :1995



KARNA B. SHAKYA
 Hakha, Lalitpur
 G.P.O. Box 2252
 Ph. 526065 (R)
 B. 10 Aug.
 Ann. MEENA : 1995



MADAN KUMAR RAI
 P.O. Box 334, Lalitpur
 Tel. 525187
 B 18 July W 15 May
 Ann. SUBHADRA

RECOGNITION FOR OUTSTANDING VOCATIONAL CONTRIBUTION

Mr. Kaji Ratna Shakya, born on 1929 at Hakha, Lalitpur is engaged in Handicraft works since 1941 under the guidance of his father. His specialty is to produce fine artwork in iron dice, used for the production of other artifacts. Also he is well known for high quality handicraft works on gold, silver, bronze and copper plates. Rotary Club of Patan is proud to honour Mr. Kaji Ratna Shakya for his outstanding contribution.

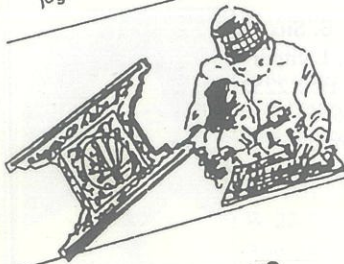
BRONZES

We produce more than a hundred icons of different forms and sizes in bronze. Figurines of Gods, Goddesses, stylised as well as realistic animals and traditional designs in pots, pans, jugs, bells, vajra - you name it - are all available.



WOOD WORK

The century old tradition of wood-carving is brought to life by our wood-carvers. The famous peacock screen window, the owl, elephant and horse and many other designs can be made to order in any shape and size.



SILVER ORNAMENTS

From ear-rings, rings, bracelets in silver, to necklaces, belts and buckles in beads and copper is yours to pick and choose.



CHRISTMAS GIFTS

Looking for something special for your loved ones? Each set of gleaming box or animal make an exquisite filigree present. Christmas tree ornaments exclusively designed by us will make your Christmas even more memorable.



PAPIER MACHE

Paper products such as writing pads, cards, diaries etc., for everyday use papier-mache masks make wonderful decorations or souvenirs reminding you of the legends and practices of Nepali cultures and traditions.



CARPETS

The colours and designs are yours to choose. We produce a whole range of carpets using traditional motifs as well as modern designs in different sizes.

GARMENTS

For your fashionable tastes we produce garments using Nepali fabrics as well as from outside. We also manufacture range of garments for international market.



NEPAL TRADITIONAL CRAFTS PVT. LTD.

(Estd. 1964)

Kupondol Heights,
Lalitpur
Nepal

G.P.O. Box 979
Kathmandu, Nepal

Telex: 2322 BLUSTR NP

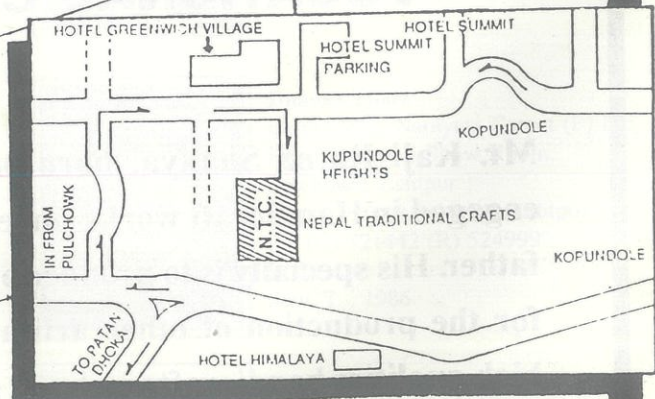
Fax: 977-1-527871

Tel: 527916

523608

521667

Cable: EXPORTISE



Please visit our showroom at Kupundole Heights. Plus you can watch our artisans and craftsmen at work reproducing the various objects de' Arts.



Inner Wheel Club of Patan

CHARTERED 6.04.1994
 CLUB NO. 4363

*Reported by - Ann. Brinda Rana
 (President Inner Wheel Club of
 Patan 95-96)*

ACTIVITIES

1. A talk programme was organised on Beauty Treatment. Our speaker was Rt Reema Kohli. All our members appreciated the programme.
2. Donated clothes to the poor and needy infants at Maternity Hospital, Thapathali. Our special thanks to Ann. Nani Shova Shakya, for all the sewing of clothes without her help we would not have been able to carry out this programme. We hope to carry out this programme regularly.
3. We installed a shop with Nepalese handicrafts & souvenirs for the delegates of Rotary International during the three-day conference (11th-13th January 1996) known as South Asia Conference of Co-operation & Development. We were able to raise some funds for our club.
4. We have sponsored 4 poor girls for scholarships from Lalitpur district.
5. With the help of Patan Jaycees we had a one-day programme on motivation of Nepalese Women at the Summit Hotel on 30th march 1996. Our special thanks to Patan

Jaycees & Rtn. Pushkar Shakya for their help. Special thanks, of course, go to Summit Hotel.

6. We were able to donate medicines to Sanepa Chakrapath Clinic which is a free clinic run by doctors & nurses of the area. We hope to carry out this programme regularly.

The office bearers are as follows.

- President - Ann. Brinda Rana
- Vice President - Ann. Chandra Lekha Pandey
- Secretary - Ann. Munu Rajkarnikar
- Jt. Secretary - Ann. Bijaya Laxmi Shrestha
- Treasurer - Ann. Rita Shakya
- Club Correspondence - Ann. Nirmala Shrestha
- International Service Organiser - Ann. Sharda Prasai

After the last monthly meeting held in May '96, we chose our new office bearers for 1996-97. The office bearers are as under :-

- President - Ann. Chandra Lekha Pandey
- Vice President - Ann. Vijaya Laxmi Dhital

- Secretary - Ann. Vijaya Laxmi Shrestha
- Jt. Secretary - Ann. Chitra Laxmi Shakya
- Treasurer - Ann. Rita Shakya
- Club Correspondence - Ann. Anju Dixit International Service
- Organiser - Ann. Sharda Parsai

In my capacity as President I would like to thank all office bearers and members of our club making the year 1995-96 a success. Our 2 years old club was able to motivate members to organise the above mentioned programmes. We would like to convey our good wishes & support to the office bearers of 1996-97 for an active & successful year ahead.

Motto for 1996- 97.

**“LOOK BEYOND
 YOURSELF &
 BE INVOLVED”**

Lastly, our special thanks to Rotary Club of Patan for sparing space for us in the 11th Installation Souvenir of the Rotary Club of Patan.

Previously our meeting was held monthly, however we intend to meet twice a month (Second Mondays & last Mondays of the Nepalese calendar) Venue : Narayani Hotel.

INNER WHEEL CLUB OF PATAN MEMBER



Chandralekha Pandey
 Res. Sanepa, Lalitpur
 Ph. 521652
 B. 17 Sep. W 19 Feb.
 Rtn. Rabendra



Anju Dixit
 Res. Sri Durbar Tole, Lalitpur
 Ph. 536338
 B. 27. Jan.W. 11 June
 Rtn. Kamal



Vijayalaxmi Dhital
 Res. Shree Durbar Tole,
 P.O. Box No. 41, Lalitpur
 Ph. 521024
 B. 15 Aug. W 16 Feb.
 Rtn. Vishnu



Sharada Prasai
 Res. Kopundole, Lalitpur
 Ph. ~~525018~~
 B. 14 June W. 1 Jan
 Rtn. Prajapati



Bijayalaxmi Shrestha
 Res. Sinchahiti, Lagankhel,
 Lalitpur G.P.O. Box 1970
 Ph. 524780
 B. 12 Apr. W. 7 Jan
 Rtn. Ganesh



Chandralekha Kayastha
 Res. Chadralaya, Kopundole,
 Lalitpur Res. ~~524758~~
 B. 4 May W. 7 July
 Rtn. Matsendra



Rita Shakya
 Res. Man Bhawan, Lalitpur - 5
 G.P.O. Box 167
 Ph. 523492
 B. 6 July W 27 Feb
 Rtn. Pushker



Brinda Rana
 Res. Kopundole, Lalitpur- 3
 Ph. 521667
 B. 4 Oct. W 18 Feb June.
 Rtn. Sagar



Nirmala Shrestha
 Res. Dhobighat, Jawalakhel
 Lalitpur, Ph. 521745 B. 25 Apr.
 W 3 May Rtn Shanta



Munu Rajkarnikar
 Res. Thasikhel, Lalitpur
 Ph. 521364
 B. 5 Aug W. 10 June
 Rtn. Narayan



Chaitra Laxmi Shakya
 Res. Sri Durbar Marg,
 Pulchowk, Lalitpur
 Ph. 526792
 B. 22 Mar W 14 Feb.
 Rtn. Siddhi



Mary Shrestha
 Res. Chakapat, Lalitpur
 Ph. 535826
 B. Chaitra W 19 Feb
 Rtn. Yagya

524753

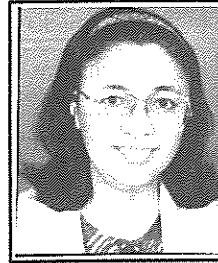
Suloca Nyachayan B. Aug 18 30

Meesa Amatya

B. 2nd Dec.



Nani Shova Shakya
 Res. 17, Hakha Tole, Lalitpur - 12
 Ph. 522467
 B. Oct. 21 W. 14 Feb
 Rtn - Tirtha



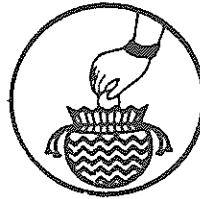
Sulochana Shah
 Res. Jawalakhel, Lalitpur
 P.O. Box 3459 Ph. 525373,
 B. 10 Mar. W 23 Sept.
 Rtn. Rishi



Shanta Rana
 Res. Happy Height, Thari Dhunga
 Dhobighat Ph. 527007
 B. 14 May W 30 June
 Rtn. Krishna



Rajani Bajracharya
 Res. Pulchowk, Lalitpur
 Ph. 524586
 B. 20 Feb. W 2 Mar.
 Rtn. Bijaya.



ललितपुर फाइनेन्स Lalitpur Finance Co. Ltd.

" Managing Money Earning Trust "

Interest rates on FIXED DEPOSIT

Period	INTEREST WITHDRAW	
	Monthly	After Maturity
3 Mths	9.0%	-
6 Mths	10.0%	-
1 Year	13.0%	13.65%
2 Years	13.5%	15.20%
3 Years	14.0%	17.03%

- Interest can be withdrawn every month.
- Interest on 4 years and above will be on negotiation.
- Double in five years.

Call us or visit us
 523850, 536598
 Lagankhel, (Near Patan Hospital)
 Lalitpur, Nepal.

ROTARY CLUB OF PATAN

1996-1997 EXECUTIVE, COMMITTEE CHAIRPERSON AND MEMBERS TELEPHONE

Vishnu Prasad Dhital 521024 President	Tirtha Man Shakya 522467 Immediate Past President	Narayan G. Halwai 521364 Secretary
Dr. Prakash Regmi 525536 Joint Secretary	Pushkar Man Shakya 523492 Treasurer	Ganesh R. Shrestha 524780 Sergeant At Arms
Rabendra R. Pandey 521652 Vice President/ President Elect	Classification Committee	Siddhi B. Shakya 526792
	Membership Development/ Membership Committee	PP Matsendra Kayastha 52475 8 Ganesh R. Shrestha 524780
	Rotary Int. Club Bulletin/ Magazine Committee	PP Prajapati Prasai 229277 PP Bijay Bajracharya 524586 Pushkar Man Shakya 523492
Kamal Nyachhyon 521167 Director : Club Service	Attendance Committee	Kamal M. Dixit 536338 Pushkar Man Shakya 523492 Dr. Prakash Regmi 525536
	Programme/Fellowship Activities Committee	Narayan G. Halwai 521364 Ganesh R. Shrestha 524780 Yagya B. Shakya 523753
	Public Relation Committee	Karna Shakya 526065 Tirtha Man Shakya 522467 Tulsi Neupane 526065
Dr. Krishna Jung Rana 527007 Director : Vocational Service	Career Development/Vocation at Work Committee	PP Prajapati Prasai 229277 Siddhi B. Shakya 526972 Sant K. Shrestha 521745 Dr. Kanti Giri 521316
	Vocational Awareness/ Vocational Awards Committee	Dr. Kanti Giri 521316 Karna Shakya 526065 Indra B. Shakya 525949
Renu Shrestha 525667 Director : Community Service	Environmental Protection Committee	Tulsi Neupane 526065 Ganesh R. Shrestha 524780 Moti Lal Shilpakar 521447
	Health Development/Partners In Service Committee	Bihari K. Shrestha 522173 Santa B. Shrestha 521745 Tulsi Neupane 526065
Yagya B. Shrestha 523753 Director : International Service	World Community Service/ Fellowship Activities Committee	Dr. Kanti Giri 521316 Dr. Ramchhaya Amatya 522360 Chirinjibi Acharya 522378
	Rotary Foundation	Dr. Kanti Giri 521316 Matsendra Lal Kayastha 524626 Bihari K. Shrestha 522173
	Youth Exchange/Youth Reports Committee	PP Bijay Bajracharya 526738 Shreedhar S. JBR 522012 Karna Shakya 526065
Rotary Building Committee	Educational Committee	Lochan Gyawali 521311 Tulsi Neupane 526065 Gyanu R. Shakya 525187
PP Bijay Bajracharya 526738 PP Matsendra Lal Kayastha 524758 PP Tirtha Man Shakya 522467	Prajapati P. Prasai 229277 Chirinjibi Acharya 522378 Moti L. Shilpakar 521447 Renu Shrestha 525677	Old People Home Committee
	Orthopaedic Hospital Committee	Vishnu P. Dhital 521024 Tirtha Man Shakya 522467 Prajapati Prasai 229277 Matsendra Kayastha 524758 Narayan G. Halwai 521364 Pushkar Man Shakya 523492
Stone Spout Committee	Dr. Bhisme R. Prasai 521910 Matsendra Kayastha 524626 Bihari K. Shrestha 522173 Narayan G. Halwai 521364	
Narendra N. Shakyabansa 525856 Narayan G. Halwai 521364		

Key :
 Committee Chairperson Res. Tel.
 Committee Members Res. Tel.

**We Extend Our Best Wishes
For The Grand Success
Of
ROTARY CLUB OF PATAN
On
The 11th Installation Ceremony.**



Salt Trading Corporation Limited

Central Office, P.O.Box No. 483, Kathmandu, Nepal.

Tel : 977-1-271014/271208/270315

Fax : 977-1-271704/271395, Telex : 2241 NP, Cbl : NOON

२०५३ श्रावण १ गते देखि लागु हुने गरी
 निक्षेप तथा कर्जाका देहायनुसार ब्याज दर
 परिवर्तन गरिएको ब्यहोरा जानकारी गराउँदछौं ।

हाम्रो निक्षेप सेवा

मुहृती निक्षेप योजना

अवधि	ब्याज दर
३ महिने	१०.००%
६ महिने	१०.५०%
१ वर्षे	१३.००%
२ वर्षे	१३.५०%
३ वर्षे	१४.००%
४ वर्षे	१४.००%
५ वर्षे	१४.५०%
६ वर्षे	१४.५०%

क्रमिक बचत योजना

हरेक महीना कम्तीमा
 रु. ३००/- का दरले वा
 १०० ले भाग लाग्ने रकम
 बढीमा रु. ५,०००/- ४२
 महीना सम्म नियमित जम्मा
 गर्नु होस् र ४३ महीना
 पुरा भए पछि ५० किस्ता
 बराबरको रकम फिर्ता
 पाउनुहोस् ।

दोब्बर रकम योजना

५ वर्ष पछि तपाईंको
 निक्षेप रकम दोब्बर गरी
 भुक्तानी दिइने छ ।

विशेष बचत योजना

यस योजनामा न्यूनतम रु १०००/- ले खाता
 खोली सुविधानुसृत जति सुकै रकम जम्मा
 गर्न सकिने, ३ महिनामा एक पटक रकम
 फिर्ता पाउने ।

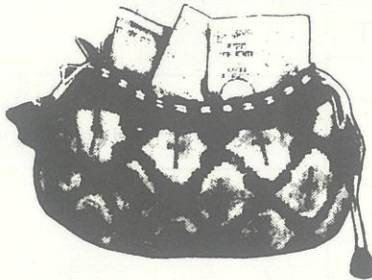
मुहृती खाता खोल्न आवश्यक न्यूनतम रकम :

३ र ६ महिनामा रु १,००,०००/- र अन्यमा रु १०,०००/-

सुगम कर्जा सेवा

कर्जा शिर्षक	ब्याज दर
१) ट्रक, बस, मिनिबस, मोटर साइकल आदि सवारी साधन, घरायसी तथा कार्यालय उपकरण खरिद गर्न : हायर पर्चेज कर्जा	२०.००%
२) व्यापारीक दृष्टिकोणले लाभदायक भवन निर्माण गर्न : भवन निर्माण कर्जा	१९.५०%
३) क्लिनिक, नर्सिङ होम, होटल, रेष्टुरेन्ट, एवं अन्य उद्योगको लागि क) स्विच पूँजी कर्जा ख) चालु पूँजी कर्जा	१९.००% १८.५०%
४) व्यापार व्यवसायको लागि : व्यापारिक कर्जा	२०.५०%
५) शेयर तथा स्टक धितोमा	१९.५०%
६) मुहृती रसिद धितोमा : पाउने ब्याजमा थप ३% वा न्यूनतम १५%	

आकर्षक ब्याज, सुरक्षित बचत,
सुगम कर्जा सुविधा



नेशनल फाइनांस के. लि.

बसन्तपुर, पोष्ट बक्स नं. ६९४२, काठमाडौं

फोन : २४७७६९, २४२३०२, फ्याक्स : २२२९२०

सम्पर्क कार्यालय : तीन दोबाटो, बनेपा, फोन ६९३४२

बचत गर्ने बानी बसाली, आफ्नो भविष्य सुरक्षित पार्नुहोस् ।

Watch your dreams in

NEPAL

We offer :

- * Special tours to Nepal, Tibet & Bhutan*
- * Selected Cultural, Adventure & Jungle Safari Tours of Nepal*
- * Trekking & White Water Rafting*
- * Hotel Reservation & Convention Arrangements*
- * Air Ticketing & Charter Flights*

through



VISION TOURS & TRAVELS (P.) LTD.

GPO Box : 10666 Thapathali, Kathmandu, Nepal. Tel : 244114, 231116 Fax : 977-1-244114/524588



A different kind of place...



Safari Narayani
CHITWAN. NEPAL

For Information or reservations:
Telephone : 527370 Fax : 521291

List of Scholarship distribution by **ROTARY CLUB OF PATAN**

from July 1991/Shrawan 2048

S.No.	Name of Student	Name of School	Donor	Starting Date	Condition
1	Putali Maharjan	Adarsha Kanya Niketan	T. L. Maharjan	Shrawan 048	-
2	Ganga Laxmi Maharjan	Saraswati M. V., Thecho	Moti Lai Shilpakar	Shrawan 048	-
3	Ganga Maharjan	Siddhi Mangal M. V.	S. Muromutto	Shrawan 048	-
4	Ram Nath Tmilsina	Prem Basti M. V., Chitwan	Siyokaju Netsu	Shrawan 048	-
5	Yakdev Adhikari	Amar M. V., Chitwan	Siyokaju Netsu	Shrawan 048	-
6	Sunita Shakya	Adarsha Saral M. V.	Andre Gillioz	Shrawan 048	-
7	Bindu Sapkota	Mahendra Bhrikuti M. V.	Andre Gillioz	Shrawan 048	-
8	Sanu Maiya Chourel	Mahankalsthan M. V.	Patan Rotary	Shrawan 048	-
9	Chandra Thapa	Nepal Rastriya M. V., Balaju	Andre Gillioz	Shrawan 048	-
10	Chandra Badan Silwal	Saraswati M. V., Lele	Andre Gillioz	Shrawan 049	Conti...
11	Laxmi Maharjan	Adarsha Kanya Niketan	Andre Gillioz	Shrawan 049	-
12	Preeti Shrestha	Chandi Vidyashram	Andre Gillioz	Shrawan 049	-
13	Dharma Ratna Shakya	Chandi Vidyashram	Andre Gillioz	Shrawan 049	-
14	Reshma Maharjan	Pragati Siksha Sadan	Andre Gillioz	Shrawan 049	-
15	Rupendra Khatri	Bishankhu Narayan M. V.	Andre Gillioz	Shrawan 049	-
16	Suresh Maharjan	Bishankhu Narayan M. V.	Andre Gillioz	Shrawan 049	-
17	Jagannath Silwal	Kitini M. V.	Andre Gillioz	Shrawan 049	-
18	Dashram Maharjan	Adarsha Shaul Yubak M. V.	Andre Gillioz	Shrawan 049	-
19	Raju Prasad Dulal	Bagh Bhairab M. V., Batase	Andre Gillioz	Shrawan 049	-
20	Narayani Devi Maharjan	Saraswati M. V., Thecho	Andre Gillioz	Shrawan 049	-
21	Yogendra Shakya	Bal Binod M. V.	Andre Gillioz	Shrawan 049	-
22	Bhakta B. Nepali	Shree Krishna M.V., Dhapakhel	Andre Gillioz	Shrawan 049	-
23	Maiya Khadka	Mahendra Adarsha, Imadol	Andre Gillioz	Shrawan 049	-
24	Manpyri Maharjan	Siddhi Mangal M. V.	Andre Gillioz	Shrawan 049	-
25	Sharmila Thapa	Adarsha Kanya Niketan	Veera & Christain	Shrawan 049	-
26	Gambhir Giri	Pragati Siksha Sadan	Veera & Christain	Shrawan 049	-
27	Umesh Chandra Ghimire	Kitini M. V.	Veera & Christain	Shrawan 049	-
28	Basana K. C.	Chhampi Devi M. V.	Veera & Christain	Shrawan 049	-
29	Ratna Bhakta Mali	Adarsha Shaul Yubak M. V.	Patan Rotary	Shrawan 049	-
30	Rajan P. Lamichhane	Bagh Bhairab M. V., Batase	Patan Rotary	Shrawan 049	-
31	Apsara Bajagain	Mahakali Devi M. V.	Siyokaju Netsu	Shrawan 049	-
32	Lajana Shrestha	Adarsha Kanya Niketan	Veera & Christain	Shrawan 051	-
33	Bal Krishna Maharjan	Kitini M. V., Taukhel	Veera & Christain	Shrawan 051	-
34	Bhaju Ratna Shakya	Adarsha Shaul Yubak M. V.	Patan Rotary	Shrawan 051	-
35	Machhindranath Dulal	Bagh Bhairab M. V., Batase	Andre Gillioz	Shrawan 051	Conti...
36	Muna Nyopane	Saraswati M. V., Thecho	Andre Gillioz	Shrawan 051	Conti...
37	Shubhadra Pudasaini	Saraswati M. V., Thecho	Andre Gillioz	Shrawan 051	-
38	Ritu Maharjan	Saraswati M. V., Thecho	Andre Gillioz	Shrawan 051	-
39	Sharada Bimali	Sri Janakalyan MV., Ramailo	R. S. Muromutto	Shrawan 051	Conti...
40	Bishnu P. Sapkota	Mahakali Devi M. V.	Veera & Christain	Shrawan 051	Conti...
41	Ramita Maharjan	Thecho V. D. C.	Patan Rotary	Shrawan 051	Conti...
42	Sujit Maharjan	Thecho V. D. C.	Patan Rotary	Shrawan 051	Conti...
43	Daya Parajuli	Mahankalsthan M. V.	Patan Rotary	Shrawan 051	Conti...
44	Ritu Shakya	Adarsha Kanya Niketan	Mrs. Innes Ramaut	Magh 052	Conti...
45	Laxmi Khadka	Adarsha Kanya Niketan	Paric Martin	Magh 052	Conti...

46	Hema Bhatta	Adarsha Kanya Niketan	Innes Ramaut	Magh 052	Conti...
47	Mirendra Bajracharya	Adarsha Saral M. V.	Moti Lal Shilpakar	Magh 052	Conti...
48	Dhirendra Yadav	Adarsha Saral M. V.	Machhendra Kayastha	Magh 052	Conti...
49	Sajani Shakya	Adarsha Saral M. V.	Tulasi Maharjan	Magh 052	Conti...
50	Pawan Nepali	Udaya Kharka M. V.	Andre Gillioz	Magh 052	Conti...
51	Sharmila Shrestha	Udaya Kharka M. V.	Andre Gillioz	Magh 052	Conti...
52	Urmila Nagarkoti	Udaya Kharka M. V.	Andre Gillioz	Magh 052	Conti...
53	Lila Basnet	Sri Krishna M.V., Dhapakhel	Andre Gillioz	Magh 052	Conti...
54	Nabindra Shrestha	Sri Krishna M.V., Dhapakhel	Andre Gillioz	Magh 052	Conti...
55	Saraswati K. C.	Sri Krishna M.V., Dhapakhel	Andre Gillioz	Magh 052	Conti...
56	Makhamali Ghale	Kalidevi M.V., Pyutar	Andre Gillioz	Magh 052	Conti...
57	Rammaya Galan	Kalidevi M.V., Pyutar	Andre Gillioz	Magh 052	Conti...
58	Madhusudan Bikram Shah	Chandi Vidyashram M.V.	Andre Gillioz	Magh 052	Conti...
59	Devraj Dangal	Chandi Vidyashram M.V.	Andre Gillioz	Magh 052	Conti...
60	Sujita Rajbhandari	Chandi Vidyashram M.V.	Andre Gillioz	Magh 052	Conti...
61	Usha Thapa	Chhampi Devi M. V.	Andre Gillioz	Magh 052	Conti...
62	Keshav Bista	Chhampi Devi M. V.	Andre Gillioz	Magh 052	Conti...
63	Naresh Dahal	Jankalyan M. V.	Andre Gillioz	Magh 052	Conti...
64	Shanta Bhujel	Jankalyan M. V.	Andre Gillioz	Magh 052	Conti...
65	Jit Govinda Dangol	Adarsha Shaul Yubak M. V.	Andre Gillioz	Magh 052	Conti...
66	Suman Baniya	Adarsha Shaul Yubak M. V.	Andre Gillioz	Magh 052	Conti...
67	Deepa Bista	Adarsha Shaul Yubak M. V.	Andre Gillioz	Magh 052	Conti...
68	Tuyu Maharjan	Saraswati M. V., Thecho	Andre Gillioz	Magh 052	Conti...
69	Prakash Kunwar	Saraswati M. V., Thecho	Andre Gillioz	Magh 052	Conti...
70	Nanda Kumar Maharjan	Siddhi Mangal M. V.	Andre Gillioz	Magh 052	Conti...
71	Muna Devi Nemkul	Siddhi Mangal M. V.	Andre Gillioz	Magh 052	Conti...
72	Menuka Shrestha	Siddhi Mangal M. V.	Andre Gillioz	Magh 052	Conti...
73	Milan Shrestha	Bishankhu Narayan M. V.	Andre Gillioz	Magh 052	Conti...
74	Shushil Silwal	Bishankhu Narayan M. V.	Andre Gillioz	Magh 052	Conti...
75	Sarita Maharjan	Bal Binod M. V.	Andre Gillioz	Magh 052	Conti...
76	Rashmi Shrestha	Bal Binod M. V.	Andre Gillioz	Magh 052	Conti...
77	Dil Kumari Karki	Bal Binod M. V.	Andre Gillioz	Magh 052	Conti...
78	Prakash Maharjan	Saraswati M. V., Lele	Andre Gillioz	Magh 052	Conti...
79	Geeta Thapa	Saraswati M. V., Lele	Andre Gillioz	Magh 052	Conti...
80	Padam Ghimire	Mahankalsthan M. V.	Andre Gillioz	Magh 052	Conti...
81	Dibyashwari Subedi	Mahankalsthan M. V.	Andre Gillioz	Magh 052	Conti...
82	Ratna Prasad Dulal	Mahankalsthan M. V.	Andre Gillioz	Magh 052	Conti...
83	Panmaya Gole	Bagh Bhairab M. V.	Andre Gillioz	Magh 052	Conti...
84	Raj Kumar Ghimire	Bagh Bhairab M. V.	Andre Gillioz	Magh 052	Conti...
85	Rupa Karki	Mahendra Adarsha M. V.	Andre Gillioz	Magh 052	Conti...
86	Narayan Babu K. C.	Mahendra Adarsha M. V.	Andre Gillioz	Magh 052	Conti...
87	Shambhu Devkota	Mahendra Adarsha M. V.	Andre Gillioz	Magh 052	Conti...
88	Krishna Kumari Tamang	Mahendra Brikuti M. V.	Andre Gillioz	Magh 052	Conti...
89	Kamal B. Lama	Mahendra Brikuti M. V.	Andre Gillioz	Magh 052	Conti...
90	Kopila Gurung	Mahendra Brikuti M. V.	Andre Gillioz	Magh 052	Conti...
91	Sunita Luintel	Pragati Shiksha Sadan	Andre Gillioz	Magh 052	Conti...
92	Sahadev K. C.	Kitini M. V., Taukhel	Veera	Magh 052	Conti...
93	Pralhad Acharya	Kitini M. V., Taukhel	Veera	Magh 052	Conti...
94	Chameli Thapamagar	Kitini M. V., Taukhel	Veera	Magh 052	Conti...
95	Indira Khatri	Bishankhu Narayan M. V.	Veera	Magh 052	Conti...
96	Chanamati Maharjan	Mahakali Devi M. V.	Veera	Magh 052	Conti...
97	Tulasi P. Choudel	Mahakali Devi M. V.	Veera	Magh 052	Conti...
98	Laxmi Maharjan	Saraswati M. V., Thecho	Rita Jeker	Magh 052	Conti...
99	Bal Krishna Chalise	Pragati Shiksha Sadan	Shiyokaju Netsu	Magh 052	Conti...

Total 64 Students are continuing in the current year 1996.

ROTARACT CLUB OF PATAN

(Sponsored by Rotary Club of Patan)

Estd. 1996

YUBA CLUB HAKHA BUILDING
 Hakha Tole, Lalitpur-12

S.No.	Designation	Name of Members	Date of Birth	Sex	Address
01	PRESIDENT	RAJENDRA SHAKYA (OM)	2029/12/30	M	C/O YUBA CLUB HAKHA HAKHA TOLE, LALITPUR-12 NEPAL
02	VICE PRESIDENT	DHARMA RAJ SHAKYA	2026/01/15	M	
03	SECRETARY	RAM BAHADUR SHAKYA	2024/10/20	M	
04	JT. SECRETARY	RAMITA SHAKYA	2033/01/14	F	
05	TREASURER	SHAILENDRA KUMAR SHAKYA	2029/10/20	M	
06	DIRECTOR	RAJU SHAKYA	2031/08/13	M	
07	DIRECTOR	RAJENDRA SHAKYA (NABIN)	2029/12/29	M	
08	DIRECTOR	MEELA SHAKYA	2028/12/02	F	
09	DIRECTOR	MAMATA SHAKYA	2031/01/15	F	
10	DIRECTOR	UTTAM RAJ SHAKYA	2027/03/15	M	
11	MEMBER	YOG LAXMI SHAKYA	2032/12/20	F	
12	MEMBER	RANJIT SHAKYA	2030/11/23	M	
13	MEMBER	INDRA RAJ SHAKYA	2026/04/04	M	
14	MEMBER	BUDHA RATNA SHAKYA	2025/04/29	M	
15	MEMBER	SURENDRA SHAKYA	2030/08/15	M	
16	MEMBER	GAUTAM SHAKYA	2027/12/12	M	
17	MEMBER	PRABIN SHAKYA	2028/01/09	M	
18	MEMBER	VINOD SHAKYA	2032/09/15	M	
19	MEMBER	DEBENDRA SHAKYA	2030/07/23	M	
20	MEMBER	SUNIL SHAKYA	2031/01/15	M	
21	MEMBER	SURENDRA SHAKYA	2032/11/07	M	
22	MEMBER	ROJENDRA SHAKYA	2031/11/27	M	
23	MEMBER	SUMAN SHAKYA	2028/10/03	M	
24	MEMBER	DEVI LAXMI SHAKYA	2033/11/07	F	
25	MEMBER	RAJENDRA SHAKYA (BHAJ)	2024/06/07	M	
26	MEMBER	SURESH SHAKYA	2026/03/02	M	
27	MEMBER	SULOCHANA SHAKYA	2030/12/04	F	
28	MEMBER	MILAN SHAKYA	2031/08/09	F	

We Extend Our Best Wishes

To

ROTARY CLUB OF PATAN

On

The 11th Installation Ceremony.

HOTEL VAJRA

Bijeswori, Kathmandu
Tel. 271545

We Extend Our Best Wishes

To

ROTARY CLUB OF PATAN

On

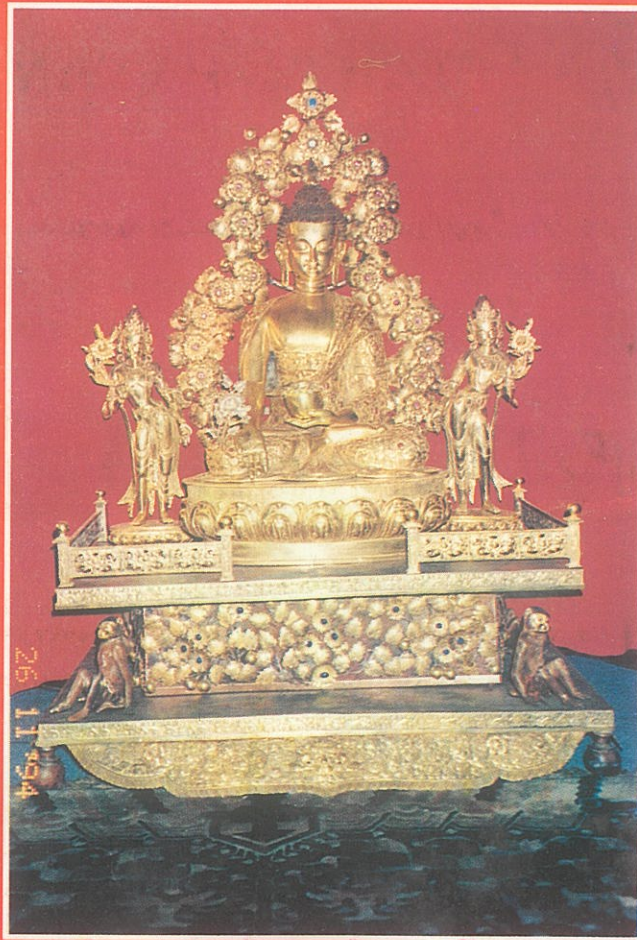
The 11th Installation Ceremony.

AMATYA ENTERPRISES (P.) LTD.

Bina Chamber, Exhibition Road,
P. O. Box 1213 Kathmandu.

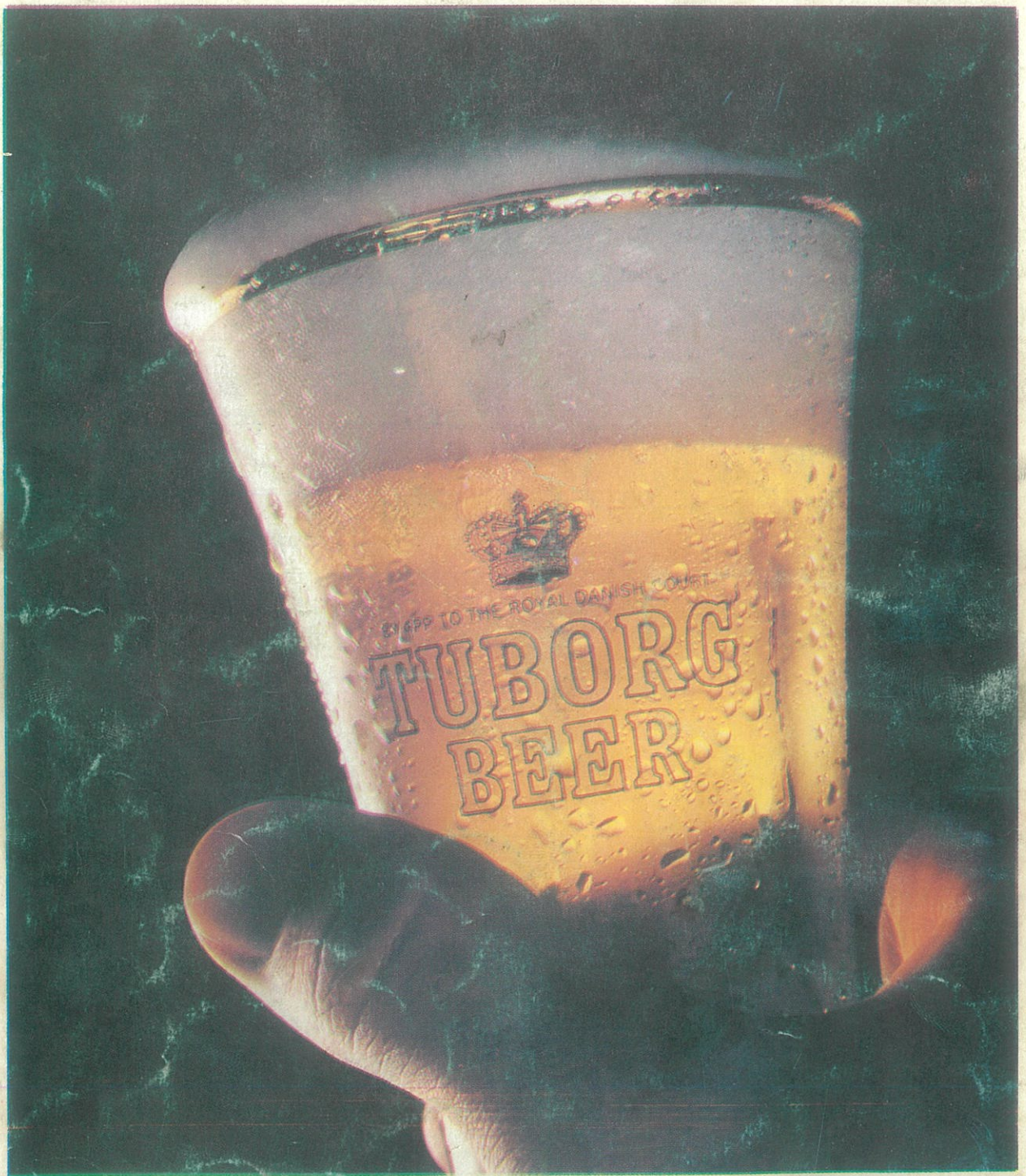
Tel. 227098/227126

Fax : 977-1-410899



SIDDHI ART GALLERY
(BRONZE EXPERT)

SRI DURBAR MARG, PULCHOWK, LAITPUR.
GPO BOX: 1142 KATHMANDU, NEPAL.
PHONE: 521525, 526792, FAX: 977-1-525465



TUBORG ... WHEREVER YOU ARE