

LALIT DHARA SOUVENIR ISSUE

**ROTARY**



*GRS*

DISTRICT 3290,  
CLUB NO. 23126

**CLUB OF PATAN**

*12th Installation Ceremony*



*Show Rotary Cares*



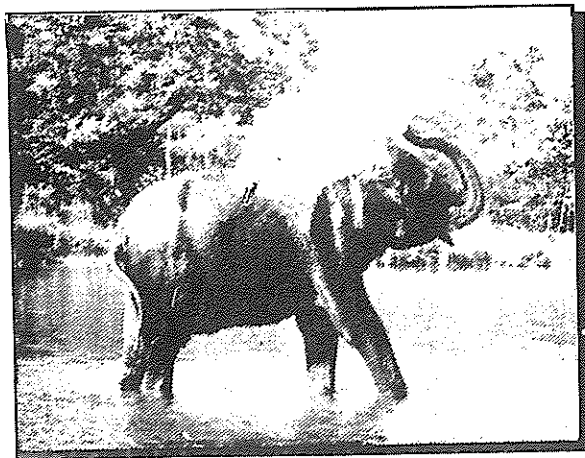
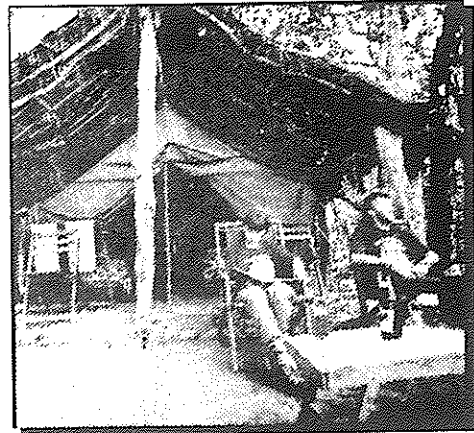
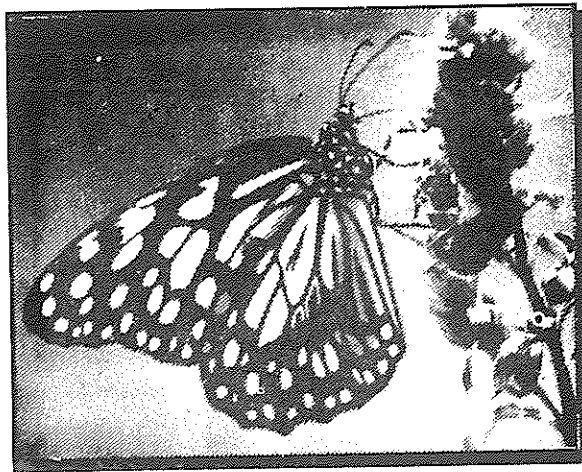
ललित धारा

पदस्थापन - विशेषांक

१९९७/१९९८



# Wildlife adventure in luxury lodges and tented camps



*An exclusive wildlife  
camp at a prime  
location inside the  
Royal Chitwan  
National Park*



***Island Jungle Resort***

G.P.O. Box 2154 Durbar Marg, Kathmandu.  
Phone: 220162, 225615, 229116  
Telex: NP 2409 Alpine Fax: 977-1-225615



## ROTARY CLUB OF PATAN

Club No. 23126

Chartered on 19.04.1985

District 3290

### *Executive Members 1997-1998*

President	:	Pandey Rabendra Raj
Immediate Past President	:	Dhital Vishnu Prasad
Vice President &	:	Halwai Narayan Govind
President Elect 1997-1998	:	
Secretary	:	Nyachhyon Kamal Bahadur
Treasurer	:	Shrestha Ganesh Raj
Joint Secretary	:	Shrestha Santa Kumar
Director-Club	:	Shakya Pushkar Man
Director-Vocational	:	Shrestha Yagya Bahadur
Director-International	:	Dr. (Mrs) Giri Kanti
Director-Community	:	Dr. Rana Krishna Jung
Sgt. At Arms	:	Shakya Gyanu Raj



## EDITORIAL

Our Club has a weekly bulletin "LALITDHARA". It covers almost all the activities of the club within the week. In the same way "LALITDHARA" Souvenir issue publishes every year on the occasion of the Installation Ceremony of the Club. It includes the yearly plans and programmes of the club.

As usual we try to give the clear picture of the club's activities during 1996-97. Our Club - Directors have tried to give the clear picture of their deeds and vision in the club.

In the same way we have been able to include the project undertaken by our club during last 12 years in brief. We hope along with other article this will be much more interesting to all well wishers of our club.

Thanks.

## CONTENTS

<i>Message From R. I. President: Glen W. Kinross</i>	3
<i>Message from District Governor: Anjan Kumar</i>	4
<i>Message from President: R. R. Pandey</i>	5
<i>Message from I.P. P : V. P. Dhital</i>	7
<i>Club Activities during 1996-1997</i>	8
<i>Annual Report on Vocational Service</i>	11
पाटन रोटररी क्लब, सामुदायिक सेवाको संक्षिप्त विवरण	12
<i>Report on International Service</i>	13
आर. आई. कन्भेन्सन	15
नाडी छाम्यो पैसा भान्यो	17
<i>Thulo Parsel Water Supply Project</i>	19
<i>Project Undertaken by RCP during last 12 years</i>	23
<i>Scholarship program to poor student</i>	29
<i>Program for Mentally Retarded in Nepal</i>	32
<i>Members of Rotary Club of Patan</i>	35
<i>Members of Innerwheel Club of Patan</i>	40
<i>Activities of Innerwheel Club of Patan</i>	42

### Editorial Board

Rtn. Kamal Bahadur Nyachhyon  
 Rtn. Kamalmani Dixit  
 Rtn. Narayan Govind Halwai  
 Rtn. Pushkar Man Shakya  
 Rtn. Ganesh Raj Shrestha

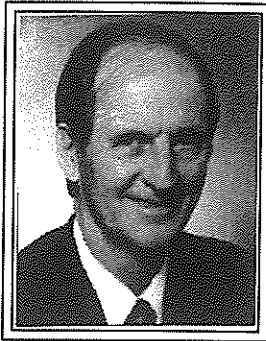
### Published by

**ROTARY CLUB OF PATAN**

### Printing, Design & Typesetting by

**JOSHI MUDRANALAYA (P.) LTD.**

31, Kwako, Shaheed Shukra Marg, Lalitpur-11 Tel : 521479



**GLEN W. KINROSS**  
*President*  
Rotary International 1997-98

Dear Fellow Rotarians,

Everyone wants to live in a world in which the aged, the infirm, and the children are well cared for - a world at peace, free of war, crime, and violence, and where each person has the opportunity for education and employment. Rotarians by their very nature care deeply about the problems that obstruct the creation of such a world. And with leaders in every business and profession in 28,000 communities worldwide, we have the potential to turn our concern into action and the resources needed to improve the lot and lives of people everywhere.

Rotary's greatest strength will always be the individual Rotarian. No other organization has such powerful human resources. The time has come to fully employ those resources and put them to work solving the most serious problems in our communities. I believe that if all of our 1.2 million individual Rotarians show they care by improving the quality of life in each of their 28,000 communities, we can indeed create a better world.

Let us begin by attacking hunger and poverty, which are the root causes of so many other ills in our communities. But we cannot lift people out of poverty with food and shelter alone. People also need the tools to help themselves and to improve their situation in life. We live in a world of letters and numbers. Those who cannot read, write, and do basic mathematics will never be able to pull themselves out of poverty and live in dignity and self-sufficiency.

To accomplish such lofty goals, we must not choose projects because they are easy but because they are hard. We can begin by identifying the most serious problems in our own communities. Then, drawing on the business and professional skills of our members, we can develop practical solutions and convince other community leaders to help implement them.

As Rotarians, we command considerable influence, but many clubs are not making full use of their stature and power for good. To fight the rising levels of crime, poverty, homelessness, and other ills, Rotary should become the conscience of the community and bring pressure to bear upon others to join our vital cause. Using the Object of Rotary as our guiding principle, let us begin at the grassroots level to **Show Rotary Cares**.

Sincerely,

Glen W. Kinross

---

Source : Rotary International District 3290 Directory : 1997-98



## ROTARY INTERNATIONAL

*R.I. District 3290*

**Rtn. Anjan Kumar**  
District Governor

## MESSAGE

19-07-97

Rtn Rabendra Raj Pandey  
President  
R.C. Patan  
Everest Express Tours & Travel (P) Ltd.  
GPO Box 482  
Kathmandu.

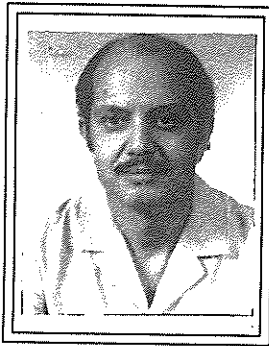
Dear Rabendra,

It gives me immense pleasure to know that Rotary Club of Patan will be celebrating their Installation Meeting for the Rotary Year 1997-98. On that day you will be installs as the President of your club. I wish you and your team of office bearers the very best. 1997-98 is the year when we in Rotary have pledged to **SHOW ROTARY CARES**. I am sure you have chalked out your plans and programmes to **SHOW ROTARY CARES** in all the four avenues of service. I will request you to work with all the members of the club to reach to your desired objective. Involvement of all the club members is the key word and I am sure you will always keep this in mind as you lead the club in the year 1997-98.

Once again, wishing you and your team members the very best.

Yours Sincerely,

**Rtn. Anjan Kumar**  
District Governor



## ROTARY CLUB OF PATAN

*R.I. District 3290*

### SETTING GOALS

### MESSAGE

### FROM THE PRESIDENT

When a Rotarian friend 8 years back asked me to join the Rotary Club of Patan, I did not know that one day I would have the opportunity and privilege to be the President of the Club. I accept this honour with all the humility and shall endeavour to uphold the ideals of Rotary.

Rotary started when our Founder Paul Harris in 1905 called together three young businessmen and gave them his "Very simple plans of mutual cooperation and informal friendship.... They agreed to his plan." Over the years Rotary has undergone numerous changes in order to keep relevance to time but its essence of "SERVICE" has not changed. Our community is full of challenges. Challenges like illiteracy, poverty, drug abuse, hunger, deteriorating environmental conditions etc. These challenges are monumental. But, we as Rotarians should regard these challenges as opportunities to SERVE.

The four Avenues of Service of Rotary namely, Club Service, Vocational Service, Community Service and International Service are excellent vehicles to achieve the goals of Rotary. However, due to the overwhelming number of tasks staring at you, one can easily lose heart. The best way out of such a situation is to harness the wealth of resources available in the membership. All Rotarians are volunteers and each one can be encouraged to get involved according to their preferences and abilities. Rotary Club of Patan over the past 12 years has embarked upon and successfully completed various worthy projects. Great leaders before me have taken our club to great heights and I shall do my best to keep up the good work with the help of the Office Bearers, Directors and Members of the Club.

While setting our goals, we must always keep the objective of Rotary in the forefront which is to encourage and foster the ideal of service as a basis of worthy enterprise and in particular to encourage and foster:-

- The development of acquaintance as opportunity for service.
- High ethical standard in business and profession, the recognition of the worthiness of all useful occupations, and the dignifying of each Rotarian's occupation as an opportunity to serve society.
- The application of the ideal of service in each Rotarian's personal, business and community life.
- The advancement of international understanding, goodwill, and peace through a world fellowship of business and professional persons united in the ideal of service.

Keeping these objectives in mind our "TEAM" has identified the following activities as its goal for the Rotary year 1997/98.

#### CLUB SERVICE

- Strive to achieve 5% net increase in membership.
- Increase the number of classifications represented.
- Have maximum number of members attend the Rotary International Convention in Indianapolis U S A , 14-17 June 1998.
- Organise an intergenerational Rotary family event including grandparents, parents, children and grandchildren.
- Invite Rotaract Club members to give a presentation about their service activities at one of the meetings.

### VOCATIONAL SERVICE

- Recognise one or more community members for vocational achievement.
- Extend the Sewing training Project to other areas.
- Encourage members to serve on committees of their trade or professional associations.
- Develop a plaque which promotes the concept "Do it once-do it well" and distribute to Rotarians to display in their work places to encourage quality.
- Sponsor or participate in a project at a local secondary school that emphasis the importance of completing education and choosing a vocation.

### COMMUNITY SERVICE

- Sponsor or participate in the prevention of drug abuse in collaboration with some of the concerned organization in the community.
- Revitalise the "Dhunge Dhara Project" and strive to have at least two sprouts flowing with water.
- Sponsor or participate in a household waste management programme.
- Make efforts to complete the establishment of Rotary Village Corps in Lele.
- Make efforts to establish an Interact Club in Patan.
- Organise a workshop on re-constructive surgery with the help of an expert team from UK.
- Continue to develop Sr. Citizen and Girl's hostel project-Shanti Griha.
- Strive to reach a goal of 100 students under our education fund.

### INTERNATIONAL SERVICE

- Encourage members to become Paul Harris Fellows of PH Sustaining Members.
- Undertake a world community Service project which addresses the issue of poverty, hunger or literacy.
- Prepare projects of various sizes to seek International co-operation.
- Participate in the youth exchange programme.
- Participate in the group Study Exchange programme.
- Organise a rotary Friendship Exchange programme within the SARRC Countries.

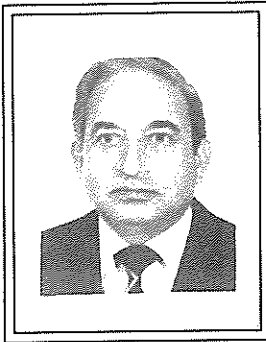
Besides, our team will provide all possible inputs, support and resources to the various ongoing projects of our club.

We all know that in the absence of necessary financial resources no project can neither be launched nor completed. Hence, our team has earmarked fund-though nothing substantial - in this year's budget for the four Avenue of Services. This will only act as seed money and it is upto us the Rotarians of Patan club to make it grow to a full fledged tree.

I am confident that with the dedication, and hard work of the 1997/1998 team of Directors, their Committee Members and the support of the rest of the members of our club, we shall be able to achieve many of the above goals. We have all heard that actions speak louder than words. Let us all get into action and **SHOW ROTARY CARES.**

**Rtn. Rabendra R. Pandey**  
*President*  
Rotary Club of Patan





# MESSAGE

FROM  
THE I.P.P. MR. DHITAL

Dear Fellow Rotarians,

During the past year (1996/97) we tried to act with a vision and acted with missionary zeal. Our efforts met with successes in many respects but failures had an upper hand in some. The wheel of successes and failures, which regulates the life of a man, did not leave us alone. Our club which was considered to be the "Club of the year" during the 1995-96 period could not be promoted higher up during the following year.

In spite of certain unavoidable obstacles, mostly administrative, we did manage to travel a long way towards meeting our goals. Special mention may be made of our contribution towards the immunization of children by polio plus vaccine; our participatory contribution towards the establishment of a cancer hospital is a piece of work to be proud of; and our special contribution towards the Rotary Foundation can be taken as an example worth repliating - i.e. we have now in our club not less than 4 MPHf, 11 PHF and 2 PHMS and our membership has remained stable although a few friends have moved to greener pastures.

Our ongoing activities like the supply of drinking water in a remote village, construction of an old peoples' home, commissioning of an adult orthopaedic hospital, provision of about 100 scholarships in village schools, lectures by distinguished personalities etc are moving along unabated.

But we remained far behind our target in the acquisition of land for our own building and our efforts to have our own district have remained rather sluggish.

We have not yet abandoned our hopes and we continue to proceed with perservance which, sooner or later, is bound to bear fruits. I am particularly hopeful that the sustained cooperative programme we are jointly developing with other colleagus in Nepal will enable us, one day, to have our own district.

To care for those who are in need is the motto of the Rotary and I am sure the Rotary Club of Patan will not spare its efforts in living up to that goal and looking after the needy in the year that lies ahead.

*Vishnu Prasad Dhital*  
President (1996-97)  
Rotary Club of Patan

## CLUB ACTIVITIES DURING 1996-1997

*Compiled by  
 Rtn. Narayan Govind Halwai  
 Rtn. Karnal B. Nyachhyon*

### 1. Membership

There was 39 members on July 1, 1996. Four (4) members (Biswa Kant Mainali, Rishi Shah, Dr. Bhism Raj Prasai and Indra Bahadur Shakya) were terminated and 2 new members (Rtn. Ram Singh Thapa and Rtn. Basanta Giri) were inducted during the year. There is 37 members as on June 30, 1997.

### 2. Board Meeting

Board meeting were conducted regularly.

The main discussion and decision were focused on

- Club Calendar and Program,
- Projects undertaken by the Club, mainly, Thulo Parsel Drinking Water, Shanti Griha and Education Fund,
- Strengthening fiscal management including timely collection of dues, remittance to RI, monitoring budgetary provision, income and expenditures, etc.,
- Activate the Directors, Committees and members for strengthening Club activities.

### 3. Regular Club Meetings and Attendance

A total of 51 meetings were held during the year. Average club attendance was 73%. There are 16 Rotarian with more than 80% attendance. Such high attendance recorded is mainly due to ease in attending other clubs for make up attendance. Out of this 7 Rotarians have achieved 100% attendance during the year and they are:

- |                       |                       |
|-----------------------|-----------------------|
| i) Vishnu P Dhital    | ii) Rabendra R Pandey |
| iii) Narayan G Halwai | iv) Pushkar M Shakya  |
| v) Kamal M Dixit      | vi) Ganesh R Shrestha |
| vi) Tulsi Neupane     |                       |

However, 13 members have recorded less than 60% attendance. It is to remind that mandatory attendance requirement is 60%. It is regretted that they missed the opportunity to make up attendance in 8 clubs in the Valley. They are requested to cultivate the habit of attending other clubs for make up attendance.

### 4. Club Program

4 club meetings in a month generally consisted of 1 business meeting, 1 speech by a guest speaker, 1 talk program on classification and another on club activities including club assembly.

### Distinguished Guest Speakers

The Club have invited the 21 distinguished guests to address the regular club meetings. The guests delivered the speech as follows :

- Father E A Watrin, United Mission to Nepal.
- Rt. Hon'ble Sher B Deuba, Prime Minister.
- Rtn. Tehmas Manekshaw, District Governor.
- Hon'ble Pashupati SJB Rana, Minister of Water Resources.
- Mr. Joe Manickavasagam, Resident Representative, The World Bank.
- Rtn. Tehmas Manekshaw, District Governor, RI 3290.
- Mr. Ram Chandra Malhotra, Management Expert.
- Mr. Padma Jyoti, President, FNCCI.
- Rtn. Dr. Jogendra Jha, Co-ordinator, National Polio Plus Programme.
- Mr. Richard T. Wurster, Resident Representative, FAO.

- Mr Ramesh Sharma, Chairman, Nepal Red Cross Society.
- Rtn. Dr. Bibek Pradhan, Mansfield Rotary Club, UK.
- Mr. Yadav Kharel, Film Producer.
- His Excellency K. V. Rajan, Ambassador of India.
- Dr. Suresh Raj Sharma, Vice Chancellor, Kathmandu University.
- Mr. Sant Bahadur Rai, Chairman, Public Service Commission
- Dr. William Piggott, Resident Representative, WHO
- Mr. M Ali Shah, Resident Representative, ADB, March 10, 1997.
- His Excellency L B Smith, Ambassador of United Kingdom.
- Rtn. Dr. Bijaya Guruwacharya, Project In Charge.
- His Excellency Dr. C Barth, Ambassador of Federal Republic of Germany.

#### Classification Speech

Four Rotarian members shed light on their classification:

- Rtn. Sant Kumar Shrestha, August 26.
- Rtn. Karna Bhadur Shakya, February 17.
- Rtn. Madan Kumar Rai, April 7.
- Rtn. Ram Singh Thapa, November 25.

#### Club Assembly

3 Club assembly were conducted during the year on September 2, 1996; December 30, 1996; and March 24, 1997.

#### Entertainment Program

An entertainment program - Music Recital by Mr Ananda Karki and Group were organised on March 31, 1997.

#### Special Talk Program by Rotarian

- Past President Rotarian Prajapati Prasai spoke on Personality of His

Majesty The King Birendra on December 30, 1996 on the occasion of Birthday Celebration of His Majesty's The King.

- Immediate Past President Rotarian Tirtha Man Shakya spoke on Rotary Awareness on January 27, 1997 to mark Rotary Awareness Month.

#### Visiting Rotarians to the Club

The Club welcomed 123 Visiting Rotarians from various Rotary Clubs both from Nepal and abroad. The number of visiting rotarians from different clubs are as follows:

- Clubs in Kathmandu Valley - 80
- Clubs outside Kathmandu Valley - 6
- Clubs in Asia (India - 10; Japan - 2; Thailand - 5)
- Clubs in Europe - 12
- Clubs in North America - 6
- Club in Australia - 1
- Africa - 1

#### 5. Paul Harris Fellow and Sustaining Members of the Club - An Update

##### *Multiple Paul Harris Fellow :*

- Bijaya Bajracharya
- Chandra Sekhar Gyawali
- Matsendra Lal Kayastha
- Rabendra Raj Pandey

##### *Paul Harris Fellow:*

- Kamal Dixit
- Vishnu Prasad Dhital
- Siddhi Bahadur Shakya
- Renu Shrestha
- Kanti Giri
- Prajapati Prasai
- Sagar Shumsher JB Rana
- Shreedhar Shumsher JB Rana
- Chandra Lekha Kayastha
- Chandra Lekha Pandey
- Bulu Gyawali
- Rajani Bajracharya

- Dinesh Shrestha
- Ashish Giri
- Jagdish Shumsher JB Rana

**Sustaining Member Paul Harris Fellow**

- Hom Raj Bajracharya
- Puskar Man Shakya

**6. National Polio Plus Program**

RCP participated in monitoring and supervising the National Polio Plus Program in Constituency No 1 of Lalitpur District. Several of our Rotarian and Rotract friends have been to remote areas of the district which are 2 to 4 hours walking distance from the road head and stayed overnight. The areas easily near the road head are covered by others. The services of Rtn. Vishnu Prasad Dhital, Rtn. Narayan Govind Halwai and Rtn. Sagar Shumser JB Rana were recognised by National Polio Plus Committee.

**7. Experience of the Year**

**RI Dues and Club Termination**

Delay in payment of RI dues (dispatched on September 27, 1997), misplace of document containing Semi-annual report and RI dues, termination of Club charter due to non-payment of RI dues by September 30, and loss of voting right in the election of DGN during District Assembly (Feb 1997) were humiliating for all the club members. Secretary (Rtn. Narayan G Halwai) and Treasurer (Rtn. Pushkar M Shakya) felt their responsibility for such humiliating actions and resigned from their posts. Their resignation, however, was not accepted by the president.

It is felt that the District Governor took it for granted that the club must be knowing the consequences of being terminated and did not feel it necessary to warn the club about it.

**Effort for Collection of Club Dues and Results**

There is still large sum (large relative to club budget) to be collected as contribution

to Bhaktapur Cancer hospital, Thulo Parsel Drinking Water Project, advertisement in Lalitdhara and Souvenir, gifts and happy occasion and greeting inspite of effort to collect these in this year. However, the collection of Club dues is satisfactory.

It is to conclude that either fellow Rotarians are not aware that they have to make any contribution or they just forget their commitment and wait for next reminder or don't bother to pay inspite of repeated reminder. Some don't want to make any contribution which the Board of Directors/house has agreed as mandatory contribution. Some don't care to contribute any for their business advertisement in the souvenir.

**Contribution as a Rotarian**

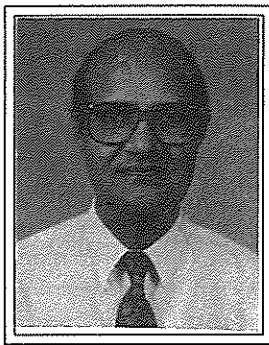
Rotarians in 5 valley Clubs (Kathmandu, Patan, Kathmandu Mid-town, Kathmandu North and Patan West) are to contribute towards club contribution of \$1000 to Bhaktapur Cancer Care Centre (BCCC). It is reported that contribution from a club is made from club fund which is not generated by contribution of Rotarians. We wonder whether a club could remit all the RI Dues out of Club Fund mainly generated through means other than contribution from Club members.

**8. Suggestion for Club Administration and Activities**

- Balanced club program with more emphasis to encourage participation of club members and their family members.
- Activate and encourage Directors for their active participation in club activities with the involvement of Committee Chairperson and members.
- Strengthen activities (billing and subsequent reminder) for timely collection of Club dues and contribution for club activities.
- Mobilise internal resources for club activities to match the resources/ grant/assistance from external sources. ■

# ANNUAL REPORT ON VOCATIONAL SERVICE 1996/97

*Rtn Dr. Rana K. Jung*  
Director, Vocational Service



As defined by the Rotary International, the Vocational Service is one of the four avenues of services which fosters and supports the application of the ideal of services in persuite of all vocations.

A tentative plan of vocational services for the year 1996/97 was prepared. While preparing the annual action plan, empahsis was given to promote poor and possibly disabled section of the community to gain some sort of vocational skills so that they would be able to become self employed and self supporting.

Under the Career Development Scheme; with the cooperation of Rtn. R.R. Pandey a total of ten sewing machines were made available from Delhi Midtown Rotary Club and further with the help of Rtn. Tirth Man Shakya a Rotary Sewing Training Centre was established in Hakha Tole in 1996. As per the latest report received from the training centre, sufficient number of young and enthusiastic persons have been trained in sewing and cutting skills. The persons so trained have been able to earn their livelyhood as well as have also been able to cooperate with the centre.

Lately, with the cooperation of Rtn. Sagar Sumsher Rana, efforts are being made to establish a Rotary Village Corps (RVC) in Lele Village to promote some income generation scheme for the local community members in the village. It is hoped that the RVC would be made

functional in the near future.

As already planned, one disabled person has been identified for the Vocational Award. The person identified is Mr. Amrit Ratna Shakya who is about 30 years old. Mr. Shakya had an attack of Poliomyelitis disease during his childhood and had developed paralysis of both his legs. As he cannot walk, he has been using a wheelchair for his mobilisation and inspite of his handicap, he managed to complete his schooling and also earn certificates in sewing and cutting courses. Later on, he opened a sewing and cutting training centre of his own in the Patan Dhoka area. Within a short period of his career, he was been able to train more than thousand students in sewing and cutting courses. It was encouraging to know that he has got special interest in helping other disabled people.

○○○



## पाटन रोटरी क्लब सामुदायिक सेवाको संक्षिप्त विवरण

रो. रेणु श्रेष्ठ  
डाइरेक्टर, कम्युनिटी सर्भिसेज



सामुदायिक सेवालार्ई “रोटरीको ढुकढुकी” भनि वर्णन गरिएकोमा हाम्रो दुई मत हुन सकिदैन । पूर्व थालनी गरिएका महत्वपूर्ण कामहरु जस्तै adult orthopedic hospital, ढुङ्गेधारा, ठूलो पार्सेल खानेपानी योजना, छात्रवृत्ति कार्यक्रम र गैर सरकारी संस्थाहरुलाई सहयोग गर्ने जस्ता कार्यक्रमहरु सुचारु रूपले अधि बढ्दै गई रहेका छौं ।

ठूलो पार्सेलको खानेपानी योजना पूर्ण तवरले सफलता पछि केही चर्पीहरुको निर्माण र यसको उपयोग गर्न सिकाउने योजना भई रहेको छ ।

यस्तै तरिकाले छात्रवृत्ति कार्यक्रम पनि बढो सफलतापूर्वक संचालन भईरहेको छ । थोरै भएता पनि Rotary Scholarship ले ती गरिव विद्यार्थीहरुलाई पुस्तक केही मात्रामा

किन्न सहयोग पुऱ्याएको विद्यालयलाई महिनावारी तिर्न र कापी कलम किन्न मद्दत पुऱ्याएको छ भनेर विद्यार्थीहरुले प्रशंसा गरे ।

यस्तै किसिमले हाम्रो ढुङ्गेधारा कार्यक्रम र adult orthopedic hospital पनि सफल नहोला भन्नु पदैन ।

रोटरी क्लबले सहयोग गर्दै आएको एउटा गाउँ खोकना स्थित इन्द्रायणी प्राथमिक विद्यालयलाई २०४९ मा पाटन रोटरी क्लबले विद्यालय, फर्निचर आदि निर्माण गर्न १,३०,०००/- रुपैयाँ सहयोग गर्‍यो । अहिले फेरि केही रकम सहयोग पाएमा भवन सुधार गर्न सकिने कुरा विद्यालयबाट थाहा हुन आएको छ ।

उक्त विद्यालयमा ५०० विद्यार्थीहरु अध्ययनरत छन् । सरकारी ७ शिक्षक र ६ निजी शिक्षक । ती शिक्षकहरुलाई तलब दिनको लागि प्रत्येक विद्यार्थीबाट वार्षिक रु. ८५०/- सम्म तिर्नु पर्ने रहेछ र गा. वि. स. अध्यक्ष मार्फत सहयोग कार्यक्रम चल्दो रहेछ ।

उक्त विद्यालयमा २०५४ को विद्यार्थी संख्या यस प्रकार रहेछ ।

छात्र	छात्रा	कक्षा
९५	८३	१
२६	२९	२
३०	२४	३
२०	३४	४
२०	३५	५
३५	१२	६
१८	१३	७
१७	४	८
१६	१	९
—	—	—
२७७	२३५	

यस प्रकारले छात्राहरुको संख्या खस्दै गएको रहेछ । छोरी माथि लगानी गर्न नचाहेको अभिभावकहरुको इच्छा यस तालिकाले स्पष्ट पारेको छ ।

उक्त विद्यालयमा पिउने पानीको लागि पाइप र ट्याकिको आवश्यकता देखिन्छ ।

## Report on International Services for the Rotary Year 1996-1997



**Rtn. Yagya Bahadur Shrestha**  
Director, International Service

The main objectives and activities of the International Services is to advance understanding and goodwill among people of different nations and to improve the quality of life. In order to fulfil these objectives, the Rotary Club of Patan undertook the following activities during the year 1996-1997.

**(1) UNDER ROTARY FRIENDSHIP EXCHANGE PROGRAMME-1996-1997**

A group of six Rotarians from District 3060, INDIA was hosted by the Rotary Club of Patan.

**(2) PAUL HARRIS FELLOW:**

As the mission of the ROTARY FOUNDATION is to further understanding and friendly relation among the people of the world by funding educational, charitable programs and cultural exchange programs. And in order to fulfil these objectives fund has got to be raised for the FOUNDATION by making more and more Paul Harris Fellows. This year alone the Rotary Club of

Patan has been successful in adding six of our Rotarians as NEW PAUL HARRIS FELLOWS.

They are:

- (1) Rtn. VISHNU P. DHITAL
- (2) Rtn SAGAR SJB RANA
- (3) Rtn. SRIDHAR SJB RANA
- (4) Rtn. DR. KANTI GIRI
- (5) Rtn. RENU SHRESTHA
- (6) Rtn. PUSHKAR MAN SHAKYA

**(3) POLIOPLUS PROGRAM:**

This is the most ambitious Rotary Program ever aim at helping to eliminate Polio worldwide by the year 2000.

With the help of Rotary International along with the global partnership of W.H.O., Unicef and U.S. CENTRES FOR DISEASE CONTROL and PREVENTION, ROTARY CLUB OF PATAN launched a massive Polioplus Program in many of the remote villages of Lalipur District by its very active and dedicated volunteers. And we are very happy to inform our fellow rotarians that we have been able to cross the given target by vaccinating more children than the given quota.

(4) Likewise we have accomplished THULO PARSEL DRINKING WATER PROJECT in Kavre with the assistance of the Rotary Club of DENVER MILE HIGH of DENVER, COLORADO, U.S.A. has almost been completed. We have been just waiting for the final inauguration of the project.

(5) Regarding ADULT ORTHOPAEDIC HOSPITAL; at the end of April 1996,

the phase one task is over. The second phase of the task equipping and furnishing of the Hospital is being very actively persued. With the support of Rotary World Community Service Fund and the Maching Grant from the Rotary Foundation.

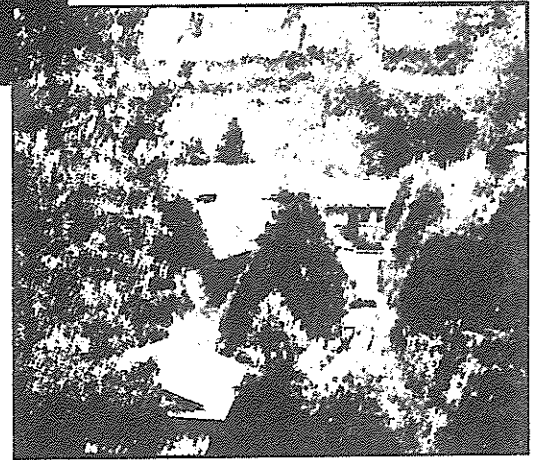
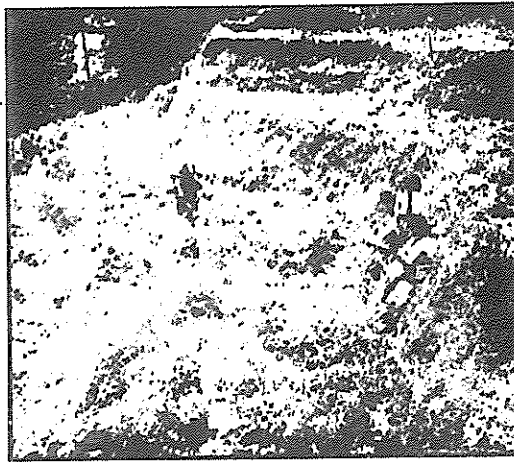
**6) NEPAL CANCER CARE 3-H PROJECT:**

With the active participation of Dr. BIBEK BAHADUR PRADHAN of Rotary Club of Mansfield of U.K., a project of establishing a new Radiotherapy Department in the BHAKTAPUR CANCER CARE CENTRE has been envisaged. In order to be eligible for the 3-H Grant, Rotary Club of Patan has already contributed U.S. \$ 1000 with individual contributions from all the members.

**7) OLD-HOME PROJECT:**

A project for the construction of a OLD-HOME at GODAVARY, PATAN at the cost of Rs. 4 crores has been developed. And with the active enitiation of Dr. B. RANA from Germany, a fund totaling about U.S. \$ 200,000 has already been raised from different individuals from Germany and the amount has already been deposited in the account of concerren Bank of the Rotary Club of Patan. And for the lesseing of the land for the construction of the building of OLD-HOME necessary negotiation is being lassied out legally with the members of Board of Directors of the concerned School, who is the actual owner of the land.





## NAGARKOT COTTAGE

*takes the pleasure of inviting you to  
experience the simplicity of village life and  
Nature's splendour of Nagarkot.*

**Date:** Open  
**Time:** As per your convenience  
**Venue:** Nagarkot  
**R.S.V.P.** **Natraj Tours & Travels Pvt. Ltd.**  
Ghanta Ghar, Durbar Marg, Kathmandu, Nepal.  
Tel: 222532, 222014, 222906.  
Fax: 977-1-227372, Nagarkot - 280863

## आर. आई. कन्भेन्सन

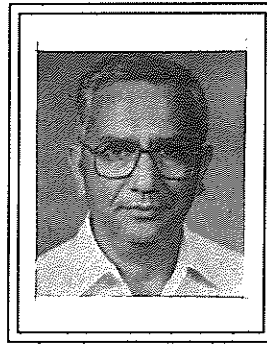
- रौ. कमल मणि दीक्षित

रोटरीका बारेमा लेख्दा साधारणतः यसका नियम कानून या यसका विशेषता, सेवाभाव, फोर-वे टेष्टहरुबारे नै लेखिन्छ। तर आज म यी विषयबाट अलि अलगिएर लेख्ने कोशिश गर्दैछु।

रोटरीमा डिस्ट्रिक्ट कन्फरेन्स र आर. आई. कन्भेन्सनहरुलाई खुब महत्व दिइन्छ। डिस्ट्रिक्ट कन्फरेन्समा आफ्ना डिस्ट्रिक्टभरिका चार पाँच हजार रोटोरियनहरु मध्यबाट ५/६ सयसम्म सदस्यहरु, उनका यानीहरु आउँछन्, सबैसंग भेटघाट हुन्छ, रोटरी मित्रता बढ्छ भनेर यस्ता कन्फरेन्समा सामेल हुनपर्छ भन्ने रोटरीले चाहेको हुनुपर्छ। अझ कुनैकुनै डिस्ट्रिक्ट त अन्तर्राष्ट्रिय हुने हुँदा त्यस्ता कन्फरेन्सहरु आफै आर. आई. कन्भेन्सनहरु जस्ता पनि भैदिन्छन् र अन्तर्राष्ट्रिय भातृत्वको रोटरीको मूलभूत सिद्धान्तलाई पनि सघाउ पुऱ्याउँछन्। शुरुशुरुमा नेपाल समावेश भएको रोटरी डिस्ट्रिक्ट ५ देशको संयुक्त डिस्ट्रिक्ट थियो। पूर्वी भारत, पूर्वी पाकिस्तान, बर्मा, सिक्किम र नेपाल सबै यसमा थिए। ऐले सबै गई नेपाल कलकत्तासित मात्र संलग्न छ। त्यसैहुँदा ऐले हाम्रा डिस्ट्रिक्ट कन्फरेन्सहरु त्यति ठूलो र अन्तर्राष्ट्रिय सम्मेलन जस्ता हुँदैनन्।

यसै हुँदा नै हामीलाई आर. आई. कन्भेन्सनहरुमा अचेल बेग्लै स्वाद आउँछ। आठ दश वर्ष अघि नेपालबाट त्यस्ता कन्भेन्सनहरुमा भाग लिन जाने रोटोरियनहरु हुँदै हुँदैनथे भने पनि हुन्छ। कैले कांही एक या दुई जना पुग्थे, अपवादको रुपमा। तर अब

नेपालमा रोटरी क्लबहरुको संख्या बढेपछि कन्भेन्सन जानेहरुको संख्यामा पनि बृद्धि भएको छ। दुई वर्ष अघि फ्रान्सको नीसमा भएको (१९९५-९६) कन्भेन्सनमा नेपालबाट



एउटा टोली नै गएको थियो। रोटोरियन, यानीहरु र रोटरी केटाकेटीहरु समेत गरी २५ जना जति पुगेका थिए त्यहाँ। प्याकेज टुर सबै मिलाई (नटराज ट्राभेल्सका) रो. पी. पी. प्रसाईले आयोजना गर्नु भएको थियो। तीन हप्ताव्यापी त्यस यात्रामा त्यस टोलीले पश्चिमी युरोपका निकै देश घुमेको थियो।

गत वर्ष क्यानाडाको क्यालारी कन्भेन्सन जान पनि यस्तै आयोजना भएको थियो। तर जाने भन्ने रोटोरियनहरुले समयमै पक्का निधो नगरिदिएकाले सो आयोजना त्यसै तहिएको थियो। तर यस वर्ष ग्लासगोमा हुने कन्भेन्सनमा जान, लैजान एभरेष्ट एक्सप्रेसले शुरु देखिनै प्रोग्राम मिलाएकोले यो "प्याकेज टुर" सम्पन्न भएरै छाड्यो। तर यस पटक शुरुमा ४१ जना जाने भनी आयोजना भएकोमा अन्त्यमा १९ जना मात्र त्यहाँ पुग्न सके। कतिपय इच्छुकहरुको भिसा नै मिलेन रे अनि

भिसासिसा सबै भैसकेका केही केही रोटोरियनहरु पनि अन्त्यमा जान सक्नु भएन व्यक्तिगत कारणले। कन्भेन्सनको फी (३/४ सय डलर) बुझाइसकेका हाम्रा भू.पू. अध्यक्ष रो. मच्छिन्द्रलाल कायस्थ दम्पतिले पनि आखिरसम्म पुगी आफ्नो ट्रिप क्यान्सिल गर्नुभएको थियो।

यो प्याकेज टुर यस पटक १० दिनको मात्र थियो, जूनको १३ तारिख देखि २२ सम्म मात्र। ग्लासगो कन्भेन्सन जून १५ देखि १८ तारिखसम्म थियो बाँकी २/४ दिन इङ्गल्याण्ड र स्कटल्याण्डका केही ठाउँको भ्रमण भएको थियो। लण्डन शहरको सैर पछिल्ला दुई दिनमा भयो। ग्लासगो शहरभन्दा ४० माइल पश्चिम समुद्र किनारको आयर (Ayr) भन्ने एउटा सानो राम्रो रमाइलो शहरमा हाम्रो मुकाम थियो। रोज विहान साढे आठ बजे आफ्नो कोचमा चढेर हामीहरु ग्लासगोमा कन्भेन्सन सेण्टरमा पुग्यौं। बेलुका फर्क्यौं। एकदिन भरि त हामीहरु एडिन्बरा शहर पनि घुम्न गएका थियौं।

कन्भेन्सनको सबभन्दा महत्वपूर्ण अंश चाहिँ पहिलो दिन उद्घाटनको अवसर थियो। २३ हजार डेलिगेट जम्मा भएको यो कार्यक्रम सबैलाई समेट्न सक्ने गरी स्टेडियममा आयोजित भएको थियो। दुई वर्ष अघि नीसमा ३६ हजार डेलिगेट जम्मा भएकोले र स्टेडियममा नगरिएकोले उद्घाटन कार्यक्रम एकै दिन दुई पटक गरी सम्पन्न भएको थियो, आधा आधा १८/१८ हजारलाई पैले ११ बजे र अर्को ३ बजे। तर यस पटक त्यसो

गर्नु परेन । एकै खेपमा सो सिद्धियो । यस्ता उद्घाटन कार्यक्रममा गीत वाद्य, नृत्य इत्यादी बाहेक भण्डा अभिवादन (पलाग स्यालुटेशन) सबभन्दा महत्वपूर्ण हुन्छ । दुइपटक गर्नु परेकोले सम्भव नभएर होला नीसमा चित्र (ठूलो भिडियो पर्दा) मा मात्र गरिएको थियो । तर यस पटक ग्लासगोमा भने १८३ ओटा देश (२ भौगोलिक इकाइ) का भण्डाहरु स्कूलका विद्यार्थीहरुले नै बोकेर आई पक्तिबद्ध खडा भएका थिए । भव्य देखिन्थ्यो । नेपाली डेलिगेटहरुलाई रोटररी र नेपाल लेखिएको सेता टोपीहरु एभरेष्ट एक्सप्रेसले उपलब्ध गराएको थियो । सेता टोपी लाएका हाम्रा रोटरियनहरु, आईमाईहरु र रोटर-याक्टहरु परैबाट टक्रकै चिनिन्थे । एभरेष्ट एक्सप्रेसको यो दूरदर्शी सुभ्रबुभ्रले राम्रै काम गरेको महसूस भएको

थियो । नत्र त्यो २३ हजार मान्छेको भीडमा हामी कहाँ हराउँथ्यौँ कहाँ ! यस बाहेक हाम्रा टोली-गाइड, काठमाण्डू क्लबका रो. सरोज खनालले ठूलो एउटा नेपाली भण्डा देखाईदा उहाँले हाम्रो भण्डा पनि हल्लाईदिनु भएकोले अरुले पनि नेपाली डेलिगेटको उपस्थितिको चाल पाए भनौँ ।

रोटररी आदर्शमा रोटरियनले एक पटक मात्रै भए पनि यस्ता आर. आई. कन्भेन्सनमा पुगेर भाग लिनु पर्छ भन्ने छ । त्यसको अर्थ के हुनु पर्छ भने प्रत्येक रोटरियनले यो संस्था के कति ठूलो छ कति विविध रंगको छ भन्ने कुरा एक पटक यस्तो समारोहमा नपुगी बुझ्न सकिँदैन भन्ने होला । नत्र कितापमा पत्रिकामा रोटररीमा संसार भर गरी १२/१३ लाख सदस्यहरु छन् भनेर यसको बृहद आकार बुझ्न सकिँदैन । तर एकै ठाउँमा २०, २५,

३० हजार मान्छे जम्मा भएको देखेपछि १०/१२ लाख भनेको कति होला भनेर कल्पना गर्न सजिलो हुन्छ । हामीहरुलाई त्यही अनुभव भयो । अझ केही वर्ष अघि जापान (टोकियो) मा भएको सबभन्दा ठूलो, ६० हजार डेलिगेट जम्मा भएको कन्भेन्सनमा कस्तो भावना आउँदो होला मनमा, कल्पना गर्न सकिन्छ ।

हुन त आर. आई. कन्भेन्सनमा गएर हामीले आफ्नो क्लबका लागि खाशै कुनै काम गर्न सक्तौँनौँ । तर जनसम्पर्क बढाउन सकिन्छ, त्यो काम लाग्दो हुन पनि सक्छ पछि । त्यस बाहेक हाम्रो रोटररी बारेको आफ्नो दृष्टिकोण फराकिलो बनाउन पनि यस्ता कन्भेन्सनहरुले ठूलो मद्दत पुऱ्याउँछन् । त्यति मात्रैका लागि पनि महत्वपूर्ण हुन्छन् यी आर. आई. कन्भेन्सन । ●



## ललितपुर फाइनेन्स Lalitpur Finance Co. Ltd.

" Managing Money Earning Trust "

### Interest rates on FIXED DEPOSIT

Period	INTEREST WITHDRAW	
	Monthly	After Maturity
3 Mths	9.0%	-
6 Mths	10.0%	-
1 Year	13.0%	13.65%
2 Years	13.5%	15.20%
3 Years	14.0%	17.03%

- Interest can be withdrawn every month.
- Interest on 4 years and above will be on negotiation.
- Double in five years.

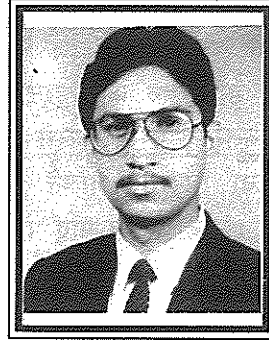
Call us or visit us  
 523850, 536598  
 Lagankhel, (Near Patan Hospital)  
 Lalitpur, Nepal.



# नाडी छाम्यो पैसा झायो

- डा. प्रकाश राज रेग्मी

तपाईं सरकारी अस्पतालमा जचाउन जानु भएमा भीडका कारण पूरा दिन बिच्छ । रगत, पिसाब, एक्सरे आदि परीक्षणहरु गराउनु परेमा फेरि अर्को दिन पनि बिच्छ । त्यसपछि रिपोर्टहरु लिएर डाक्टर साहेबलाई देखाउन जाँदा तेस्रो दिन बिच्छ । रिपोर्ट हेरिसकेपछि डाक्टरले आफ्नो विषयभन्दा बेग्लै रोगका शंका गरे भने उक्त विषयको डाक्टरको सल्लाह लिने भनी रेफर गरिदिन्छन् । रेफर गरिएको डाक्टरलाई अर्को दिन जचाउन पाउनुभयो भने चौथो दिन बिच्छ । विशेषज्ञ डाक्टर साहेबले फेरि आफ्नै तरिकाले केही पुराना टेष्टहरु दोहोर्‍याउने र केही नयाँ टेष्टहरु गराउने सल्लाह दिन्छन् । पाँचौं दिनमा तपाईं ती टेष्टहरु गराउनु हुन्छ र छैठौं दिन दिनमा रिपोर्टहरु लिई डाक्टर साहेबलाई भेट्न जानुहुन्छ - तर त्यस दिन उहाँको पालो परेको हुँदैन । टिकट काट्ने ठाउँमा बुभ्दा थाहा पाउनु हुन्छ, उहाँको पालो तीन दिन पछि मात्र छ । तपाईंले कुनै पर्ने हुन्छ । नवौं दिनमा ९ बजे विहानदेखि नै तपाईं लाइनमा बस्नुहुन्छ । एक नम्बरमै तपाईंको पालो छ । १२ बजेतिर मात्र विशेषज्ञ डाक्टर साहेब आइपुगनुहुन्छ । शायद वार्डको राउण्ड अलि लामो भएकोले १२ बजेको हुनुपर्छ । उहाँका साथमा १/२ जना अरु सेतो एप्रोन लगाउनेहरु पनि आएका छन् २/३ जना बिरामीहरु पछि लगाएर । शायद नातेदारहरु



होलान् जचाउन आएका । सबैभन्दा पहिला उनीहरुलाई नै जाँच्ने काम हुन्छ । १ बजे तपाईंको पालो आउँछ । रिपोर्टहरु हेरिसकेपछि तपाईंको अनुहारतर्फ हेर्दै डाक्टर साहेब भन्छन् - “मलाई रिपोर्टमा शंका लाग्यो, हाम्रो प्रयोगशाला पनि खै के भन्ने, रिपोर्टको विश्वास गर्ने गान्हो, एकपल्ट बाहिर प्राइभेटमा पनि जँचाउनुहोस् अनि त्यहाँको पनि रिपोर्ट हेरेपछि उपचार शुरू गरौंला ।” तपाईं छक्क पर्नुहुन्छ, यत्रो ठूलो अस्पतालको रिपोर्टमा पनि शंका गर्ने ठाउँ हुँदो रहेछ र बाहिर प्राइभेटमा जचाएर त्यसलाई पुष्टी गर्न पर्दोरहेछ । ९ दिन त बितिसक्यो, अब बाहिर जचाएर रिपोर्ट ल्याएर औषधी शुरू हुँदासम्म तपाईंको प्राण रहन्छ या रहन्दैन, तपाईं सोच्नै सक्नुहुन्न । दुबै हात पुर्पुरोमा राख्दै अस्पताललाई मनमनै सरादै तपाईं डाक्टरको कोठाबाट बाहिर निस्कनुहुन्छ ।

जतिसुकै सरापे पनि आखिर मर्न त भएन । अस्पतालप्रति रिस

उठेको भोकमा तपाईं नर्सिङ्ग होममा गएर जचाउने विचार गर्नुहुन्छ । नाम चलेको डाक्टर कहाँ नाम लेखाउन पुगनुहुन्छ, तर ४ दिनपछि मात्र तपाईंले पालो पाउनु हुन्छ । भगवान्को दर्शन पाउन सजिलो होला, डाक्टरको दर्शन पाउन किन यति कठिन ? तपाईं मनमनै आफैलाई प्रश्न गर्नुहुन्छ । पैसा तिरेर भेट्न पनि यति गान्हो । ४ दिनपछि पालो आएपछि डाक्टरसंग तपाईंको भेट हुन्छ । सबै रिपोर्टहरु हेरिसकेपछि र छातीमा आलाले जाँचिसकेपछि डाक्टर साहेबले भन्नुहुन्छ - “तपाईंको पिसाबनलीमा पत्थरी छ, अप्रेसन गरेर फिक्नुपर्छ । अप्रेसन शुल्क १८ हजार रुपियाँ लाग्छ, तर तपाईंलाई ४ हजार रुपियाँ कन्सेसन गरिदिउँला, भोलि भर्ना हुन आउनुस् । पैसाको कुरामा चित्त नबुझे उपचार गराउन अस्पताल जानोस् ।” पछिल्ला दुई वाक्यहरु तपाईंको मनमा गुञ्जिरहन्छ - “१८ हजार लाग्छ तर तपाईंलाई ४ हजार कन्सेसन गरि दिउँला । पैसाको कुरामा चित्त नबुझे अस्पताल जानोस्... ।

माथि वर्णन गरिएका घटनाक्रमहरु कुनै काल्पनिक नाटकका अंशहरु होइनन् । यो मेरा एक जना मित्रले उपचार गराउने क्रममा भोग्नुपरेको तीतो यथार्थ हो । उनले अझै निर्णय गर्न सकेका छैनन्, ४ हजार कन्सेसन पाएर १४ हजार रुपियाँमा नर्सिङ्ग होममा अप्रेसन गराउने कि प्राइभेटमा

गएर जचाएर रिपोर्ट लिएर आउ अनि औषधि गरौला भन्ने अस्पतालमा उपचार गराउने । दिग्भ्रमित भएर मसंग सल्लाह माग्दा यो तीतो यथार्थको फर्दाफास हुन पुगेको हो । मलाई पनि थाहा थिएन र विश्वास गर्न पनि गाह्रो लाग्छ, अप्रेशनजस्तो सम्बेदनशील कुरामा बागेनिंग । “फिक्स प्राइस” पो हुनुपर्ने हो । तर बागेनिंगको फलस्वरूप १८ बाट १४ हजारमा भर्दा रहेछ, अप्रेशन शुल्क व्यापारको कुनै वस्तु जस्तै ।

डाक्टरी पेशा सेवा हो वा व्यापार ? यसतर्फ सम्बन्धित सबैको ध्यान आकर्षित गर्नुपर्ने भएको छ । मेरा एकजना व्यापारी मित्रले मेरो पेशाको खुब डाहा गर्छन् । उनी भन्नेगर्छन् “तलाई त क्या मोज छ यार, नाडी छाम्यो पैसा भान्यो । दुःखै गर्न नपर्ने । ४ दिन कुर्नुपर्छ तलाई पैसा तिरेर भेट्न ।” यस प्रकार नाडी छाम्यो कि पैसा भर्छ भनी डाक्टरी पेशाप्रति ईर्ष्यापूर्ण र गलत धारणा राख्नेहरु धेरै छन् । ७८ वर्षको कठिन अध्ययनपछि, नाइट ड्युटी र इमर्जेन्सी ड्युटी, न घर परिवार न चाड पर्व भनी संघर्षपूर्ण सेवामा समर्पित भएर पनि घर परिवार चलाउन खर्च जुटाउन नसक्ने डाक्टरहरुको संख्या

नेपालमा कम छैन भनेमा धेरैले पत्याउदैन । तर यो पनि स्वास्थ्य सेवामा बागेनिंग जस्तै तीतो यथार्थ हो । डाक्टर जति सबै अशोक बाँस्कोटा र उपेन्द्र देवकोटा जस्तै कहाँ हुन्छन् र, जसलाई जचाउन १ महिना लाइनमा बस्नुपर्ने । आज त्यस्ता जुनियर डाक्टरहरु कति छन् कति जसले क्लिनिकमा मुश्किलले दैनिक ११२ जना विरामी जाँच्ने मौका पाउंछन् । नाडी छाम्न पाए पो पैसा भरोस् ।

अब एकपल्ट माथिका घटनाक्रममाथि विचार गरौं । सरकारी अस्पतालमा भीड अवश्य हुन्छ । त्यसकारण जचाउन लाइनमा कुर्नुपर्छ र उपचार गराउने क्रममा ९ दिनसम्म धाउनु पनि पर्नेहुन्छ । आखिर कालिमाटीको तरकारी बजारमा पनि त कम भीड हुदैन, तर अस्पताल जस्तै यो चर्चाको विषय बन्न सक्दैन । डाक्टरको संख्या कम र विरामीको संख्या बढी भएपछि चिकित्सा सेवाको गुणस्तरमा पनि हास आउनु स्वाभाविकै होइन । त्यसमाथि प्रयोगशाला पनि अचम्मको हुन्छ एउटै व्यक्तिको रगत १ घण्टाको अन्तरमा दोहोर्न्याएर जचाउँदा आकाश जमीनको फरक हुने खालको रिपोर्ट आउंछ । यस्तो रिपोर्टमा भर परेर

चिकित्सकले कसरी विरामीको उपचार गर्ने ? त्यसकारण क्रस चेक गर्न प्राइभेटमा जचाएर रिपोर्ट ल्याउ भन्ने पन्यो नि । यो त विरामीकै भलाइका लागि हो नि । तर यो कसले बुझिदेओस् । एकातर्फ यस्तो स्थिति छ भने अर्कोतर्फ एउटै डाक्टरले वार्ड राउण्ड पनि गर्नुपर्ने, ओ.पी.डी. पनि हेर्नुपर्ने भएपछि विरामीले ८ बजेदेखि कुरोस् कि ९ बजेदेखि, डाक्टर १२ नबजी ओपीडी पुग्न भ्याउदै भ्याउदैन । यसमा चिकित्सकको कुनै दोष छैन । जहांसम्म बागेनिंगको कुरा छ, यो आजको स्वास्थ्य सेवा व्यापारीकरणतर्फ लम्किन थालेको लक्षण हो, जसलाई तत्काल रोक्नु पर्छ । यस्तै यस्तै प्रवृत्ति र ११२ जना डाक्टरी जस्तो पवित्र पेशाको मर्म नबुझेका व्यक्तिहरुका कारण यो पेशाबारे बेलाबखत नकारात्मक टिप्पणी हुनेगर्दछ । यस सेवामूलक र पवित्र पेशालाई सर्वसुलभ, गुणस्तर युक्त बनाउन सम्बन्धित क्षेत्रहरुबाट धेरै कसरत गर्नुपर्ने देखिन्छ । त्यसपछि मात्र सय रुपियाँमा माल भिकाएर हजार रुपियाँमा बेच्ने व्यक्तिले “नाडी छाम्यो कि पैसा भान्यो” भन्ने हिम्मत गर्नेछैन ।



**With Best Wishes  
 To  
 ROTARY CLUB OF PATAN**

**P.P. Rtn. Anoop S.J.B. Rana  
 Nepal.**

## Thulo Parsel Water Supply Project A Rotary International Matching Grant Project

BY

*Rtn. Narayan Govind Halwai*

### 1. Introduction

Thulo Parsel Water Supply Project is located in Thulo Parsel Village Development Committee in Kavre District and is at about 7 hours walking distance from nearest road head at Dolalghat, about 2 hours drive from Kathmandu. Alternately, one can raft down the Sunkosi River from Dolalghat for 4 hours and walk uphill for 2 hours to reach the village.

The preparatory works consisting of project preparation, survey and design, and funding arrangement took 3 years. These preparatory activities have been presented in previous souvenir issues and are not discussed here. This project is the culmination of joint tiresome effort of Rtn Earnest Hempel and Rtn Nanene Gilmore of Rotary Club of Denver Mile High, Colorado, USA; Rtn Bihari K Shrestha and Rtn Narayan G Halwai of RCP and Mr. Ram Bahadur Tamang of Thulo Parsel Village, Kavre District.

Project Feasibility and Detailed Design was undertaken by MULTI Disciplinary Consultants (P) Ltd on credit. Rtn. Earnest Hempel had put together several clubs in Wisconsin, USA to generate sufficient donations which with matching grant from RI would add up to needed sum of US\$ 26,000. A sum of US\$13,000 was raised from District 6250, 4 clubs in District 6250 and 1 club in District 5450. Each member of RCP contributed Rs 1000 and Rotary Foundation provided US\$ 13,000 under Matching Grant No. 6411. The local people voluntarily

contributed 15 mandays of labour from each household.

The project implementation is managed by RCP Management Committee and Beneficiary Committee. The expenditure till date including labour contribution is about Rs 1.5 million. The project is more than 95% completed. A total of 97 private connection to each household in the village were constructed against design provision of 12 public taps at road sides only. In addition 76 toilets were also constructed under the Project. Existing system in adjoining Salyan Village was restored.

The Project is expected to benefit about 1000 persons. It is noteworthy to record that this is the second village in the country to have 24 hour water supply to each and every household in the village. Also the village will be proud to have latrine constructed in about 80% of the household.

### 2. Management Committees and Responsibilities

The management for project implementation is unique in nature and worth to be documented so that it could be replicated in other similar projects. Two committees one inside Rotary and another among beneficiary were formed to execute the project with the assistance of an Engineer.

#### RCP Thulo Parsel Water Supply Management Committee

Inside the Rotary, a 5 member Thulo Parsel Water

Supply Management Committee was formed under Chairmanship of Rtn Bihari Krishna Shrestha with Rtn Narayan G Halwai, Rtn Puskar Man Shakya, Rtn. Ganesh R Shrestha and Rtn Renu Shrestha as other members. The committee is authorised by Board of Directors:

- to approve the design and construction works and manage the construction activities;
- to approve and release payments for the execution of the project;
- to notify the Board of Director of project progress and endorse payment released.

The project fund is deposited in a separate current account in Agriculture Development Bank, Lagankhel, Lalitpur and is operated jointly by any two among President, Secretary and Treasurer of Rotary Club of Patan.

#### **Beneficiary Construction Committee**

There was a formal commitment of beneficiaries to manage the construction works, provide voluntary labour contribution and operate and maintain the system. With the confirmation of fund, RCP Committee formally arranged a meeting with beneficiaries on January 30, 1997 to finalise the implementation plans and procedures. RCP committee set the precondition to form a beneficiary committee who will:

- enter into an agreement with Rotary Club of Patan for undertaking the Project implementation operation,
- manage procurement, transportation, storage of materials and construction activities with the advise of the consultant.
- assure that commitment for the contribution of the beneficiaries according to agreement are met.
- take full responsibility to undertake construction of the scheme under direction of the consultant, train a maintenance worker (Heralu) to undertake repair and maintenance works and arrange to raise fund for the salary of Heralu, operation, maintenance and repair

of the scheme.

- to depute a representative who will be dealing with all matters related to the Project implementation including receiving payments from Rotary Club.

Beneficiary committee was formally constituted and Mr. Ram Bahadur Tamang was authorised to represent the Committee and co-ordinate with RCP Committee and receive payments. A draft agreement was prepared and formally agreed between RCP Committee and Beneficiary Committee. However, it is to be formally signed.

#### **Engineer to assist the Beneficiary**

MULTI Disciplinary Consultant (P) Ltd was entrusted to continue as a consultant for project implementation and they will

- depute an Engineer to assist the beneficiary on procurement of material, transportation and storage of materials, construction management, management of skilled labour and quality control works;
- review the design, improve and modify the design according to site condition and requirement of the beneficiaries;
- recommend for any payment;
- liaison between Rotary Club and Beneficiaries on project implementation;
- help to mobilise and train beneficiaries to undertake construction and repair and maintenance of the system;

### **3. Implementation Procedure**

The implementation procedure was adopted as follows:

- Beneficiary Committee prepares the work program and budget for the next 2 to 4 weeks with the advice of Engineer and submit to RCP Committee with recommendation by the Engineer;
- RCP Committee review and approve the work program and budget and release

the payment;

- Beneficiary Committee take full responsibility for management of construction under the supervision of Engineer and;
- Photo and Video documentation of the activities will be arranged so that these could be presented to the donor Clubs;

#### 4. Co-ordination Meetings and Project Implementation

Co-ordination meetings were held regularly among RCP Committee, Beneficiary Committee and Engineer to discuss the work progress, design improvements, programs for effective utilisation of available resources, and release of payment. 8 formal meetings concerning payment release were minuted. Besides several meetings on technical aspect were held. The highlights of meetings are summarised as follows:

Meeting No 1 (January 30, 1997):

The Engineer discussed the following improvements to the design:

- use of decentralised system with number of storage reservoir scattered around to serve small areas. This will enable to organise decentralised users group functioning independently.
- use of HDP water tanks instead of masonry reservoirs as these are cost effective, easier to transport and speed up construction activities.

Meeting No 2 (February 7, 1997):

- proposal to use HDP storage tank was not accepted in view of lack of confidence of the beneficiaries on durability of HDP storage tanks in comparison to concrete tanks. It was agreed to use smaller sized 7 ferro-cement storage tanks scattered in the area instead of one centralised large reservoir as designed previously.
- to use good quality pipe fittings which are to be buried under ground without any compromise on quality due to cost.

- to recruit skilled plumber and mason and train local people to repair the pipe joints and fittings and ferro-cement construction;

Meeting No 3 (February 10, 1997):

- It was decided that no bills paid for meals will be reimbursed.
- Approval and release of payment of Rs 349,800.

Meeting No 4 (February 24, 1997):

- to explore the possibility of providing private tap connection to each and every household so as to use the available surplus fund and cost sharing option with beneficiaries;
- Approval and release of payment of Rs 125,000.

Meeting No 5 (March 20, 1997):

- It was reported that majority of people don't want private connection as the proposed public taps are close to their residence and people are afraid to have private connection because either they feel they might have to pay more or they are ignorant about advantage of having private taps or women folk are not interested to have private connection as they might lose opportunity to chat with their friends while fetching water from public taps.
- It was agreed to provide private connection to all households who wish to have them and to leave a tee connection so that others could have them in future after they realises the advantage of having private connection. It was discussed to reduce the roadside public taps to encourage private connections.
- It was reported that with additional cost of Rs 100,000 to 150,000, it is possible to supply piped water to about 150 people in Ward No 3 which is not covered by present scheme. It was agreed that this be executed if the budget permits.
- It was agreed to arrange for one accountant for account keeping.
- It was discussed that beneficiaries have to



raise resources to employ one maintenance worker and fund obtained from Rotary Club cannot be used for maintenance work.

- It was agreed to release a sum of Rs 175,000.

**Meeting No 6 (April 10, 1997):**

- It was agreed that the Project will bear the cost of pipes, fittings, cement and skilled labour whereas the house owner will provide unskilled labour, stone and sand for private water supply connection to individual household.
- It was agreed to fix marble plaque at the intake and bronze Rotary symbols on water tanks. Inscription on marble plaque was discussed and finalised.
- Release of payments totalling Rs 401,200.00 was approved.

**Meeting No 7 (May 12, 1997) :**

- It was reported that 97 private connections to individual house have been provided. All the works are substantially completed and the system is in satisfactory operation.
- It was approved to undertake the restoration works of existing water supply system in the adjoining Salyan village Salyan which will benefit 28 families at estimated total cost of Rs 50,000.
- It was discussed to explore the feasibility of providing sanitation facilities to individual houses to improve sanitation condition in the village and cost sharing with beneficiaries;
- Release of payments of Rs 268,000.00 was approved.

**8th Meeting (June 15, 1997):**

- Progress of restoration of existing water supply system in the adjoining Salyan village; commitment by 76 households to construct toilet; demonstration with pilot construction of some toilets; fitting air valves on main pipe line were reported.
- It was agreed to provide ceramic pan, foot rest, small length of HDPE pipe and half a bag cement for construction of toilet to each

individual household. The house owner will provide all the labour requirement, local construction material for toilet and soak pit.

- Appointment and training of Heralu and fixation of tariff to cover salary of Heralu; operation, repair and maintenance cost;
- Release of payment of Rs 65,000 was approved.

**5. Outstanding Works**

- Completion of ongoing construction works of 2 ferrocement tanks in Salyan Village and toilets construction;
- Auction of construction tools and unused materials;
- Auditing the expenditure;
- Completion Report preparation;
- Inauguration and handing over the system to Beneficiary Committee.

**6. Experience worth to be Replicated**

- Formation of Beneficiary Committee responsible to plan, manage construction and operation of the system;
- Technical and management support to the Beneficiary Committee to plan, manage construction and operation;
- Maximum use of local resources (manpower and materials) and training of local manpower;
- Appointment and training of Heralu (maintenance worker);
- Beneficiary to mobilise resources to cover operation, repair and maintenance works;
- Regular monitoring and control of activities and timely release of payments;
- Flexibility in design modification according to need and satisfaction of the beneficiaries;
- Confidence of beneficiary that any fund saved will not be diverted to other areas but used solely for their benefit



## PROJECTS UNDERTAKEN BY RCP DURING LAST 12 YEARS

Compiled by: Rtn. Narayan Govind Halwai

Rotary Club of Patan (RCP) was chartered on April 19, 1985 as 3rd Rotary Club in the country. During last 12 years RCP had undertaken number of Projects with the mobilisation of resources from various institutions and own resources. RCP have planned to monitor these projects regularly. The available information on these projects are briefly described below.

**1st Year 1985-1986**

**President : Late Rtn Surendra Raj Sharma**

**2nd Year 1986-1987**

**President : Late Rtn Surendra Raj Sharma**

**II-1 Sipadol Multi Purpose Project, Rs 500,000,** funded by South Asia Partnership, Canada was implemented in Sipadol Village in Lalitpur District. The project consisted of construction of school building, health post, and horticulture development. Rtn Kamal Mani Dixit and Rtn Hari Prasad Poudel were involved in the Project.

**II-2 Establishment of AWON Library, Lalitpur.** RCP initiated to establish library at Kopundole, Lalitpur in association with American Women Organisation of Nepal. The library is still functioning. Rtn Dinesh Shrestha co-ordinated on behalf of RCP.

**3rd Year 1987-1988**

**President : Rtn Matsyendra Lal Kayastha**

**III-3 Indrayani School Building** construction was undertaken at Khokana village in Lalitpur District with fund (Rs 500,000) made available by Rotarian Ranjit Ratnaik from Australia. It benefited about 200 students. RCP had recently visited the school and

further strengthening of club activity for the school is under consideration. Rtn Madhav Lal Pradhan was the co-ordinator.

**III-4 Polio Eradication Project** was launched as a world wide Project by Rotary International. RCP participated in the program with contribution from club members. It is an ongoing National Project till date. RCP undertook supervision of Polio Plus Program in Constituency No 1 of Lalitpur District during National Immunisation Day in December 1996 and January 1997. Rtn Dr. Bhisma R Prasai and Rtn Madhav L Pradhan were representing RCP in the Committee. Rtn. Narayan G Halwai is nominated as a member by National Polio Plus Committee.

**III-5 Support to Health Post at Geutal, Lalitpur.** RCP supported to run the health post with its own resources till 1991. Rtn Madhav L Pradhan co-ordinated the activities.

**III-6 Support to Health Post at Natole, Lalitpur.** RCP supported to run the health post with its own resources till 1991. RCP had arranged some furniture to the health clinic (VI-20). Rtn Madhav L Pradhan co-ordinated the RCP support.

**III-7 Support to Achheswor Vihar Rehabilitation, Pulchok, Lalitpur Municipality.** RCP members donated Rs 10,000 to support the rehabilitation work. Rtn Dr. Hom Raj Bajracharya co-ordinated the RCP support.

**III-8 Support to Ama Milan Kendra, Kathmandu Municipality.** RCP members contributed Rs 40,000 to support the Kendra. Rtn. Surendra R Sharma co-ordinated the RCP support.

**4th Year 1988-1989**

**President : Rtn Matsyendra Lal Kayastha**

**IV-9 4 beds for TB patients at Kalimati Chest Hospital, Kathmandu** was made available with the contribution of Rotary Club of Sesojiya, Japan.

**IV-10 Equipment for Disabled persons** was made available by Rotary Club of Sesojiya, Japan and handed over to Nepal Disabled Association, Jorpati Kathmandu.

**IV-11 6,500 litre water tank** was constructed at Thecho village, Lalitpur District with fund (Rs 28,000) made available by Rotarian J Sinclair, South Amherst Club, Canada and local contribution. It is considered as one of most successful project undertaken by RCP and is operating successfully. Rotarians feel pride to see women folk using water tank for collecting drinking water, washing and bathing while passing through the area on the way to Thecho, Bajrabarahi and Tika Bhairab. Rtn Nandaram Bhagut Mathem and Rtn Narayan G Halwai were involved in the Project.

**IV-12 Clothes for Earthquake Victims**, costing about Rs 250,000, in East Nepal donated by Japanese citizens. Rtn Bijaya Bajracharya and Rtn Lochan Gyawali initiated the activities.

**IV-13 Financial Support to Earthquake Victims** in East Nepal. Club members contributed Rs 51,000 for the support to Prime Minister's Fund.

**IV-14 Jawalakhel Environment Improvement Project, Lalitpur.** RCP members contributed Rs 20,000 to Lalitpur Municipality for the Project. The area is well maintained as the outcome of the Project. Rtn Dr. Hom Raj Bajracharya co-ordinated the RCP support.

**IV-15 Guardianship to 2 Orphans from Earthquake Affected Areas, Tehrathum District, Eastern Nepal.** RCP handed over Rs 100,000 contributed by RI District 2540, Japan, to Bal Mandir, Naxal, Kathmandu to provide guardianship to 2 orphan girls. Rtn Dr. Bhisma Prasai and Rtn Bijaya Bajracharya initiated the activities.

**5th Year 1989-1990**

**President : Rtn Bhisma Raj Prasai**

**V-16 Bus Stand** was constructed at Thecho village, Lalitpur District near above water tank (IV-11) with the remaining fund (Rs 7,000) out of Rs 28,000 made available by Rotarian J Sinclair, South Amherst Club, Canada and local contribution for the construction of above 6,500 litre water tank (IV-11). Rtn Nandaram Bhagut Mathema and Rtn Narayan G Halwai were involved in the Project.

**V-17 Mulpi Water Supply Project** was implemented in Mulpi Village in Kavre District with a contribution of Rs 25,000 made available by RI District 3290. It consisted of construction of pipe line, storage tank and public stand post to benefit about 1000 people. Rtn Dr. Bhisma R Prasai co-ordinated the RCP support. The project is currently not in operation due to water right dispute, damage to pipe line and lack of maintenance.

**6th Year 1990-1991**

**President: Rtn Prajapati Prasai**

**VI-18 Two Class Room Extension** were constructed at Balodaya Primary School at Dhapakhel Village, Lalitpur District at a total cost of Rs 91,000 made available by RCP and local people's contribution. Rtn Narayan G Halwai was the Co-ordinator.

**VI-19 Support to 4 Martyr's Family** of Lalitpur District was undertaken with fund (Rs 150,000) made available by Rotary Club of Akita Amori, Japan. Fund were deposited in the bank as fixed deposit for the period of 5 years and the beneficiary family will be receiving interest from the deposit regularly and the principle amount at the end of 5 years. Rtn. Bijaya Bajracharya and Rtn Moti Lal Shilpakar co-ordinated the support.

**VI-20 Furniture to School and Health Post, Lalitpur.** RCP distributed furniture worth Rs 20,000 donated by Hotel Narayani, Lalitpur to school at

Thecho village, Lalitpur District and Health Post at Natole, Lalitpur Municipality. Rtn Chandra Shekhar Gyawali and Rtn Narayan Govind Halwai initiated the activities.

**VI-21 Training of Lady Doctor in Japan.** RCP sponsored a lady doctor from Teaching Hospital, Kathmandu to undergo training in Japan. It was funded by Rotary Club in Japan. Rtn Dr. Bhisma Raj Prasai and Rtn Madhav Lal Pradhan initiated the program.

**7th Year 1991-1992**

**President: Hom Raj Bajracharya**

**VII-22 Traditional Stone Spout Rehabilitation** at Nahity and Lagankhel, Lalitpur Municipality. RCP produced a preliminary report on rehabilitation of traditional stone spouts in Lalitpur. With a seed money of A\$ 2,500 from Rotary Club of Alice Spring, Australia, RCP mobilised resources of Rs 75,000 from local people and Rs 125,000 worth of reinforced cement concrete pipes from Nepal Water Supply Corporation to rehabilitate 2 stone spouts. 105m of pipes were laid to replace clogged drain of Nahity spout. The spout is discharging 2 litres per second of clear water. About 500 users are benefited.. This project is considered to be a successful and honoured with **Significant Achievement Award** from Rotary International. Lagankhel spout is yet to be fully rehabilitated. Rtn Narendra Narsingh Shakyabansa, Rtn Narayan Govind Halwai and Rtn Chirinjibi Acharya were involved in the Project. Stone spout rehabilitation is considered as an ongoing project of RCP.

**VII-23 Medical Equipment for Patan Hospital,** Lalitpur Municipality. With contributions from Rotary Clubs in Australia (Doncaster - A\$9,000, Croydon - A\$ 4,000, Forest Hill - A\$ 3,000); Rotary Club of Patan - A\$ 1,000 and RI Foundation - A\$ 17,000 under Matching Grant No 2671. Grant is used to provide modernise internal telephone system, dental and medical equipment to Patan Hospital. Rtn Dr. Hom Raj Bajracharya co-ordinated the support.

**VII-24 Ultrasonic Machine and Accessories to Amp Pipal Hospital,** Gorkha. RCP sponsored for the donation of above equipment worth Rs 174,000 with contribution of RI District 2050 of Canada (US\$ 1,475) and RI Foundation (US\$ 1,475) under Matching Grant No 2568. Rtn Dr. Hom Raj Bajracharya co-ordinated the support.

**VII-25 Water Supply to Simal Banjyang Village, Pokhara, Kaski District.** RCP sponsored the Project with contribution from Rotary Clubs of England ( Worthington - £2000, Little Hampton - £200, Shoreham and Southwick -£200, Bognorhortham -£50 and Rotary Foundation - £2450 under Matching Grant No. 2636. Total project cost is Rs 450,000 and benefit 7000 villagers. The executing agency was Water Aid, Nepal.

**VII-26 Scholarship to Poor Students Program** was initiated in this year as a regular RCP Program. The program and achievement are described separately. Rtn Prajapati Prasai initiated the Program. There is generous contribution from several contributors from Federal Republic of Germany, United States of America and Japan. Rtn Matsendra Lal Kayastha and Rtn Moti Lal Shilpakar are the contributors from RCP till date (1997).

**8th Year 1992-1993**

**President: Rtn Biswa Kant Mainali**

**VIII-27 Adult Orthopaedic Hospital (16 bed)** at Jorpati, Kathmandu. With generous assistance from clubs in RI District 7090, RCP and Nepal Disabled Association, Jorpati undertook the construction of the Project. The Project was originally designed as a 32 bed hospital at a cost of \$565,000 but scaled down to 16 bed due to financial constraint. The construction was started in June 1993 and completed at a cost of \$225,000 in June 1994. Amherst South, NY and Rotary Club of Hamilton AM, Ontario, Canada were co-ordinators for fund raising in USA and Canada. The Rotary Club of Hamilton AM alone provided \$45,000 and others by over 50 clubs in District 7090. The building is ready but could not be utilised

due to delays in mobilising resources for equipment. It was planned to run the hospital from September 1997 at a smaller scale till the equipment are available under the management of NDA. Late Rtn Nandaram Bhagut Mathema was the co-ordinator. Rtn Bhisma Raj Prasai and Rtn Matsendra Lal Kayatha co-ordinated the Project in later years.

**VIII-28 Clothes to Bhutanese Refugees** was distributed through UNHCR, Kathmandu. The clothes were donated by Rotary Club of Yotuba, Japan. Rtn Bijaya Bajracharya and Rtn Bachhan Gyawali initiated the RCP activities.

**VIII-29 Goat Breeding Project** was launched in Bhardeo village in Lalitpur District. A grant sum of Rs 62,000 received from SAP Canada was used as seed money to provide loan to villagers to raise goat. The project aimed to recover the loan and reinvest them as loans to other farmers. The beginning of the Project was satisfactory but loan recovery was poor. Rtn Sagar SJB Rana co-ordinated the Project.

**9th Year 1993-1994**

**President: Rtn Bijaya Bajracharya**

Only ongoing program as Adult Orthopedic Hospital, Scholarship, Thulo Parsel Project preconstruction activities were continued during the year.

**10th Year 1994-1995**

**President: Rtn Sagar Shumser JB Rana**

Only ongoing program as Adult Orthopedic Hospital, Scholarship, Thulo Parsel Project preconstruction activities were continued during the year.

**11th Year 1995-1996**

**President: Rtn Tirth Man Shrestha**

**XI-30 Statue and Thanka Painting Training** was conducted under the Co-ordination of Rtn Narendra Narshing Sakyabansa. With the help of trainer Mr. DB Lama, a total of 43 persons were trained.

**XI-31 Wood Carving Training** was offered to 6 persons with the initiation of Rtn Moti Lal Shilpakar at Wood Carving Industries (P) Ltd.

**XI-32 Stone Carving Training** was offered to 5 persons under trainer Mr. Lok Raj Bajracharya, a resident of Bhinchhebahal, Lalitpur. These people will be self reliant after this training. Rtn Narendra Narshing Sakyabansa coordinated the program.

**XI-33 Sponsor of Rotary Clubs and Retract Club.** RCP sponsored Rotary Club of Patan West, Rotary Club of Yala Patan and Retract Club of Patan, Hakha. RCP is contributing seed money about Rs 12,000 annually for Retract Club of Patan, Hakha.

**XI-34 Laboratory Equipment and Visual Aids** worth US\$ 3200 were made available for Balodaya School at Kanibahal, Lalitpur Municipality with contribution from Rotary Club of Branchburg, District 7510, USA - US\$ 1600 and Rotary Foundation - US\$ 1600 under RI Matching Grant No. 5008.

**XI-35 Hospital Beds and Furnitures for Adult Orthopaedic Hospital, Jorpati, Kathmandu** worth US\$12,800 was made available with contribution from Rotary Club of Mount Baker, RI District 5050, USA - US\$ 6400 and Rotary Foundation - US\$ 6400 under RI Matching Grant No.6042. Hospital beds with side tables, mattresses, blankets, saline stands, wheel chairs, crutches and other hospital furniture were procured locally.

**XI - 36 Vocational Training Fund** of Rs 100,000 was created and deposited in fixed account in the bank. It was initiated with transfer of some fund from education fund, use of sunshine fund and contribution from club members.

**12th Year 1996-1997**

**President: Rtn Vishnu Prasad Dhital**

**XI-37 Donation to Prime Minister's Flood Relief Fund.** A sum of Rs 12,000 was raised from RCP members and donated to Prime Ministers Flood Relief Fund.

**XI-38 Donation to Cancer Care Hospital, Bhaktapur.** It is a Rotary International 3H Grant Project. RCP contributed Rs 57,000 (US\$ 1,000) towards matching contribution from local Rotary Clubs. Local contribution from Nepal includes \$1,000 each from 5 Rotary Clubs in the Valley (Kathmandu, Patan, Kathmandu Mid-town, Kathmandu North and Patan West); NRs 5.5 million from Ministry of Health, HMG; NRs 2.5 million from Nepal Cancer Relief Society. The Clubs in United Kingdom raised \$20,000 including \$6,000 from Rotary Club of Mansfield and \$5,000 from RI District 1220. The Rotary Foundation granted \$ 353,025 under 3-H Grant which includes cost of buying a new Cobalt Radiotherapy machine.

The proposal includes a Well Women Clinic Pilot Project for the prevention of the Cervical Cancer with Screening with "Pap" Smear, and steps towards Cancer Registration in Nepal and "Twinning" of Bhaktapur Cancer Care Centre with Aberdeen Royal Infirmary for two way training of doctors, nurses and various specialists in cancer treatment. Inside the Rotary the Project is administered by 3-H Grants Management Committees both in Kathmandu and Mansfield. Outside Rotary a Bhaktapur Cancer Care Project Committee was formed with Joint Secretary of Ministry of Health, HMG as Ex-Officio Charman and 11 members representing Rotary, NCRS, Hospital Executive Staff and local Dignitaries. The building is scheduled to be completed in October 1997 and Radio Therapy Services will be started from February 1998. The project is initiated by Rtn Dr. Bibek Bahadur Pradhan, Rotary Club of Mansfield, UK. Rtn Matsendra Lal Kayastha is representing RCP and has provided his voluntary service for Design Phase of the Project.

**XI-39 Donation of 10 Sewing Machine to Rotract Club of Patan.** RCP handed over 10 sewing machines worth about Rs 45,000 donated by Rotary Club of Delhi Mid-town,

India to Rotract Club of Patan to run training course on sewing.

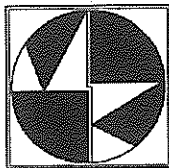
**XI-40 Donation of Ambulance and Fire Fighting Vehicle.** RCP coordinated the handed over of ambulance to Mayor of Bhaktapur Municipality and fire fighting vehicle to Mayor of Banepa Municipality by His Excellency Dr C. Barth, Ambassador of Federal Republic of Germany to Nepal. The vehicles were donated by Rotary Clubs of Germany and driven all the way from Germany to Kathmandu by enthusiastic volunteers from Germany.

**XI-41 Thulo Parsel Water Supply Project** dominated RCP activities of this year. The activities under this project is dealt separately. A sum of US\$13,000 was raised from District 6250, 4 clubs in District 6250 and 1 club in District 5450. Denver Mile High Rotary Club and Rotary Club of Eau Clair Noon were among the contributors. Each member of RCP contributed NRs 1000 and Rotary Foundation provided US\$ 13,000 under Matching grant No. 6411. The local people contributed voluntary labour for transporting construction material, digging trenches and construction works at the rate of 15 mandays of labour from each house hold. A total of 97 private connection to each house hold and 76 toilets were constructed under the Project to benefit about 1000 persons.

**XI-42 Shanti Griha, Senior Citizen Home and Girl's Hostel Project** is proposed to provide 50 beds Senior Citizen Home consisting of 3 blocks, 50 beds Girl's hostel, dining hall, recreation hall, staff and guard's quarters and a temple. Total cost of the Project is estimated at NRs 42 million to be implemented under 3 phases. Kitini High School at Godavari, Lalitpur District had agreed to make available about 20 ropani ( 1 hectare) land on 99 year lease to RCP for constructing the facilities. RCP will provide some fund in fixed deposit in a bank so as to meet annual repair and maintenance of the school. Rotary Club of Hilfe, Federal Republic of Germany had raised DM 200,000 to contribute towards cost of first phase construction.

## *Best Wishes from*

Rtn. Matsyendra Lal Kayastha



### **MR. & MRS. M.L. KAYASTHA & ASSOCIATES**

**Architects, Engineers, Designers & Planners**

**MLK Building, Kandevtasthan, Kupandole, Lalitpur - 10, Nepal**

**Tel. : 523758, 520623, 520624**

**Fax : + 977 - 1 - 524758**

**E-mail : kayastha@ccsl.com.np**

### **SERVICES OFFERED**

The Firm is particularly qualified and offers comprehensive and integrated range of planning, design and technical services as follows :

#### **PROJECT STUDIES**

Feasibility Studies

Design Studies

#### **DESIGN & CONTRACT DOCUMENTS**

Design for all  
 Architectural Works  
 Structural Design  
 Building Services Design  
 Interior Design  
 Landscape Architecture

Master Planning  
 Industrial Architecture  
 Cost Estimation and  
 Tender Documents  
 Contract Negotiation

#### **EXECUTIVE SERVICE**

Contract Administration  
 Supervision

Construction  
 Management

#### **SURVEY & VALUATION**

Feasibility Studies

Design Studies

#### **DEVELOPMENT**

Development Plans

Properties



## **Scholarship Program to Poor Students Institutionalisation as an Ongoing RCP Program**

by  
**Rtn. Narayan Govind Halwai**

### **1. Introduction**

There are thousands of children in the country who are compelled to discontinue their study due to inability of their parents to pay the school fee. These children some of them brilliant and genuinely keen to study further are frustrated being deprived of schooling and wondering here and there looking for opportunity but what they have got - some run away from their places to cities in Nepal and India and are forced to beg, some wash dishes in local restaurants and kitchen, some are forced to peddle drugs.

RCP discussed above plight of poor students and initiated Scholarship to poor student as a regular ongoing program of RCP in 1991. As a first stepping stone to institutionalise the scholarship program the club members readily contributed about Rs 30,000 as a seed money and raised to Rs 100,000 with the support of a Nepalese Rotarian in USA. The sum thus raised was deposited in the bank as a Fixed Deposit and only the interest from fixed deposit (principal amount) was used to provide scholarship of Rs 100 per month to poor students of Class 5 and continued till they complete Class 10. Scholarships are discontinued if one fails in the examination. Each year the deposited amount swelled (currently Rs 1.083 million) and supported more students in each successive year (10 in the first year, peaked to 97 in July 1996, currently at 57 and planned to about 90 in next academic year 1998). The effort to institutionalise the scholarship program since last 6 years is briefly described here.

With seed money deposited in Bank and accumulated interest adequate to support 10 students with scholarship of Rs 100 each per month, RCP was determined to announce the students receiving scholarship during Sixth Installation day in July 1991. It was discussed and agreed that students be selected based on a selection criteria rather than some ad hoc selection of one known to Rotarians. It is the second stepping stone to institutionalise the scholarship program with establishment of the selection criteria and procedure. The students were selected accordingly and invited in the Sixth Installation Day on July 28, 1991 to receive the scholarship from the Chief Guest. Rtn. Prajapati Prasai and Rtn. Narayan Govind Halwai were instrumental to institutionalise the Scholarship Program. RCP dream to grow the fund to provide scholarship to 1000 students.

The current Scholarship Committee consists of Rtn. Prajapati Prasai, Rtn. Narayan Govind Halwai, Rtn. Moti Lal Shilpakar, Rtn. Renu Shrestha and Rtn. Chirinjibi Acharya and ex-officio Secretary and Treasurer.

The aim of this article is to aware the fellow Rotarian as how the fund is being managed, monitoring and procedural improvements in selection and fund distribution based on experience and monitoring. The final goal is to receive overwhelming support from fellow Rotarians to participate in the program and fulfil RCP dream of supporting 1000 students in near future.

### **2. Objective of Scholarship Program**

The aim of the program is:

- to support the poor students from public schools studying in Class 6 whose education is likely to be discontinued due to their inability to afford school fees, school dress, books and stationary;
- to provide a minimum support of Rs 100 per month which is just sufficient to continue his/her education and provide support to more students as possible
- support is limited to students from public schools as they are relatively poorer than those in private/boarding schools.

### **3. Guideline and Criteria for Selection**

To fulfil above objective the guidelines for selection criteria were set. The guideline/criteria is improved in successive years based on monitoring whether the selected student fulfil the objective and the student receive the fund in time. and difficulties encountered. Guidelines and selection criteria are developed so as to institutionalise the program are described as follows:

#### **• Area and School**

During first year, the area was limited to public schools in Lalitpur Municipality due to lack of time to contact schools from adjoining villages. It was extended later to cover schools in other villages in Lalitpur District. Scholarship to 2 students recommended by Rotary Club of Chitwan was provided in first 3 years of the program and was discontinued later. It is unfortunate that schools in Lalitpur District which are too remote to monitor distribution of fund are not currently included.

#### **• Poor Students**

The scholarship is provided to poor students in Class 5 whose education is likely to be discontinued due to their inability to afford school fees, school dress, books and stationary rather than their academic excellence. Scholarship will be continued till the student completes Class 10 but will be discontinued if the student fails to be promoted to higher class. In later years the

scholarship is provided to students from Class 7 onwards.

• **Family Status**

Students with more sisters and brothers; Orphans, supported by mother and other relatives; Low income of guardian as primary school teacher, agriculture labour;

**4. Procedure for Selection and Fund Distribution**

In the first year, the public schools in Lalitpur Municipality was contacted personally and were requested to nominate 2 students from Class 5 with information on family background including economic status of parents/guardians. Based on the information the students were selected with an additional criteria that at least a student is selected from a student. All the selected students and Headmaster of the School were invited to receive scholarship money from the Chief Guest on Sixth Installation Ceremony Day. The students/or authorised person used to collect the scholarship amount monthly from Treasurer of RCP each month. The students complained of difficulty to come to Narayani Hotel to collect the money, so the Treasurer arranged to deliver the amount in the school each month which was possible as number is small. The progress report of each students were regularly collected.

In subsequent year, in increase in fund enabled to RCP to support 22 students. The list of public schools in Lalitpur District was collected from District Education Office and request letter were sent to each school to nominate 2 students. A short description of Scholarship fund, its objective and selection criteria was briefly described in the nominating forms to be filled up. The criteria to select at least one student per school is continued. It was not possible to arrange to distribute money at the school each month as the number grew. It was arranged for the student/guardian to collect the money from Narayani Hotel once in 3 months.

The monitoring of program was undertaken with a visit to each school to gather impression of the school teachers and beneficiary student. The finding of monitoring were as follows and remedial measures were subsequently taken by improving procedures of selection:

- nomination forms were sent in the name of student who was not enrolled in the school;
- student never know that he/she has been selected for scholarship as he/she never received the payment. Some one collects the payment and never passed to the student.
- monthly payment is too small, even 3 monthly payment was small. Also the teacher/student

requested that six monthly payment distributed at the beginning of session will be better spent in paying school fees, procuring school dress, books and stationary.

- Students felt difficulty in collecting money from Narayani Hotel. Sometime they have to visit twice as the money was not ready when they came to collect.

Based on above findings, following procedural improvement were made and is being currently followed :

- There are 22 schools in Lalitpur being covered by the program. It was intended to limit the scholarship to these schools only due to difficulty in distributing fund and monitoring to more remote areas. Private/boarding schools are not considering as the students therein are not likely to discontinue their education due to economic reason.
- On the spot selection of students was done based on discussion with headmaster, class teacher and other teachers and visit to class room. For this purpose the committee members were given responsibility to cover 3 to 4 schools and select the student.

The visit was made without any notice to the school. The purpose of the visit and objective of Scholarship fund and selection criteria was discussed with the headmaster, class teacher and other teachers and they were requested to recommend poor student needing support. The student thus recommended is visited in the class room. It is satisfying to see that the student thus recommended is poorest in the class room which is evident from his/her ragged dress, shoes, school bag, books and outlook. The student is then invited in the staff room, the information obtained from the student were directly filled up in the nominating form. It is heartening to experience the environment of the staff room while the money is handed over to the student with a congratulatory note of his/her success. It is a great satisfaction to help a poor student.

- RCP decided to distribute the fund once in a six month period at the school itself and collect the progress report of the student at the same time. RCP felt the need of an office assistant for such activities. Rtn. Prajapati Prasai managed one assistant for this activity at his own cost for last several years. The Education fund bear the salary of assistant since this year only. Each donor are assigned the students supported according to his contribution and progress report are sent regularly to them.
- Some donor wished to provide scholarship to students who have completed school education.

Some wanted to distribute more money Rs 250 to Rs 500 to each student. The wish of the donor are being accommodated.

- Year 1996-1997 57  
(22 schools in Lalitpur District)
- Year 1997-1998 (planned) 90

**5. Donor and Contribution**

Resources mobilised for the Program with contribution received from Rotarian of RCP and others with the initiation of Rotarians are summarised as follows:

**Contribution made by RCP members**

• RCP Members (Seed Money)	23,000
• Rtn. Moti Lal Silpakar, RCP, Patan	10,000
• Rtn. M.L. Kayasta - RCP, Patan	15,000
• Rtn. Prajapati Prasai, RCP, Patan, Natraj Tours	14,000
• Sunsine Fund - RCP	<u>19,958</u>
<b>Total contribution of RCP</b>	<b>81,958</b>

**Contribution made by Others**

• Rtn. Dr. T.L. Maharjan, USA	10,000
• Mr. Andre Gizzioz, Switzerland	453,290
• Ms. Veera And Mr. C. Trachaz, Switzerland	149,980
• Rtn. Shiyo Kaju Netsu, Japan	5,000
• Mr. S. Moramoto, Japan	10,000
• Mrs Ines Ramaut, Belgium	28,488
• Ms Rita Jefer Weber, Switzerland	11,000
• Mr. Patric and Mrs Martine, Belgium	13,972
• Mr. Georges - Andre Cuendet, Switzerland	<u>381,227</u>
<b>Total contribution from others</b>	<b>1,062,957</b>

**Committment from RCP members**

• Rtn. Narayan G Halwai, RCP, Patan	56,750
• Rtn. Kamal Mani Dixit, RCP, Patan	15,000
• Rtn. Kamal B Nyachhyon, RCP, Patan	15,000
• Rtn. Ganesh Raj Shrestha, RCP, Patan	15,000
• Rtn. Matsendra L Kayastha, RCP, Patan	15,000
• Rtn. Rabendra Raj Pandey, RCP, Patan	<u>15,000</u>
<b>Total Committment from RCP members</b>	<b>131,750</b>

Above fund is deposited in fixed deposit account in Lalitpur Finance Company (P) Ltd under personal guarantee of the Chairman and Nepal Bank Limited, Jawalakhel. Out of above fund, Vocational Training Fund is Nrs 61,500.

The students receiving scholarship are listed below.

- Year 1991-1992 10  
(8 schools in Lalitpur and 2 in Chitwan District)
- Year 1992-1993 10  
(8 students in Lalitpur and 2 in Chitwan District)
- Year 1993-1994 30  
(12 schools in Lalitpur and 2 in Chitwan District)
- Year 1994-1995 43  
(22 schools in Lalitpur and 2 in Chitwan District)
- Year 1995-1996 97  
(22 schools in Lalitpur District)

**6. Suggestion for Future Course of Action**

The program is running satisfactorily. Finally there is overwhelming response from fellow Rotarians in this year 1997-1998 and hope that this trend will be continued to fulfil dream of 1000 poor students supported by the Program. However, some suggestion for future strategy could be as follows:

- so far the Program is geared to support the poor students who are likely to discontinue their studies. Further approach could be to identify the poor students who had dropped the school recently due to financial eaons and get them back to school with support from the Funs.
- The program could plan to have 100% literacy among school going age group ( about upto 20 years) in certain village development committee. Long time back we had adopted Thecho village as Rotary Village and why not have an intensive program at Thecho Village with an aim to have 100% literacy on a pilot basis. May be we may require to intensify most of our resources for this aim.
- It is hoped that the program will be better institutionalised in the future. It is suggested that Inner Wheel also adopt the procedure followed by RCP rather than following the current one member ad hoc basis of selection and maintain transparency among the members.

**We Extend Our Best Wishes**  
**To**  
**ROTARY CLUB OF PATAN**  
**On**  
**The 12th Installation Ceremony**

**Arniko Secondary Boarding School**  
 Khumaltar, Lalitpur, Nepal.  
 Ph. 522873/526808

## PROGRAMS FOR THE MENTALLY RETARDED IN NEPAL

MR & MRS Graham Misbach, MA, MA



### Personal Background Information

In 1994 and 1995 my wife and I spent two years in Hyderabad, India. We spent time there, doing humanitarian volunteer work with schools for the mentally retarded, a blind school, and at the National Institute of Mentally Handicapped. During those two years we visited Nepal and some of the mentally handicapped programs in the country. We fell in love with the country and had a hope and dream that some day we might be able to return. We were invited to return at some future time and share some of the knowledge and experience that I had gained through 18 years of working in as a speech and hearing specialist, school psychologist, and administrator of special education in America. We were thrilled to have the opportunity to return improve education for mentally handicapped in this country.

### The number of mentally retarded in Nepal

A sample survey was done in 1989 by Maryknoll Fathers USA, of the number of persons with mental retardation in Nepal. Estimates were made that 720,000 person had some form of mental retardation and that possibly 40% were under the age of 14. A

survey of disabilities was made of the Kanchanpur District in 1995 sponsored by the Royal Danish Embassy. This showed 3% having mental disabilities. Using the 3% figure, projected to the 20 million people in Nepal, this would mean 600,000 are mentally retarded in Nepal. The Ministry of Education published a leaflet through the Special Education Unit and estimated that 41/2% of the people in Nepal are mentally retarded. This would be approximately 900,000 persons with mental retardation. In conclusion we have estimates that ranges from 600,000 to 900,000 persons with some form of mental retardation in the country.

### Past and present services being provided for the retarded

In 1989 The World Health Organization in training manuals published for use in developing countries estimated that 98% of persons with disabilities are totally neglected. There is at present a large portion of the population in Nepal that have little or no education and cannot read or write. Steady progress has been made to provide more education for a greater number of the people, including the handicapped. A special education program was started in 1965 by the government. This program started to function more effectively after development of the National Education System Plan in 1971, and formation of a Special Education Council in 1975.

The Association for the Welfare of Mentally Retarded (AWMR) was formed in 1981 to fill a much needed service for parents and mentally handicapped children in Nepal. It has been the pioneer group to provide this service. It is

Nepal's national "umbrella" organization which serves 32 centres through out Nepal. It is a registered NGO in Nepal. It provides and promotes early identification and intervention of children with mental retardation, day care centres, classroom instruction, vocational education, sheltered workshops, home based rehabilitation projects, parent counseling, community education, and acts as an advocate for these children and parents. Originally AWMR was privately funded through donations from various International Non-governmental Organizations and also local funds. Latter-day Saint Charities, the organization with which we work, has just approved a project to give technical and financial assistance to help AWMR meet its goals and objectives. We feel it a great privilege to be involved in this work and to provide service for the mentally retarded children and their parents.

Since 1992 and upto the present, the government has started to pay the salaries of some of the teachers working with the retarded. It is also considering providing salaries for more teachers and providing classrooms throughout the country. This permanent type support is greatly appreciated and will help insure that valuable services for the retarded with be ongoing.

### Public awareness

It is important that the public is aware that to have a mentally retarded child is not a disgrace or a punishment of God. Mental retardation can come from many causes such as poor nutrition, infectious diseases, hereditary or genetic abnormalities, use of

harmful substances during pregnancy such as alcohol, tobacco, narcotics and other harmful substances, difficulties during the birth process, lead poisoning, accidents, etc.

Efforts are being made through AWMR and other organizations to help parents know what can be done to prevent the birth of a mentally retarded child. If pregnant mothers eat properly, have immunizations for themselves and their children, abstain from harmful substances, get regular health check ups for themselves and their children much could be accomplished to have healthy happy children.

It is also important for the public to become aware of certain things about handicapped persons.

1. They can with proper training and support become self-sustaining and productive members of society.
2. They have needs and rights just like other people.
3. They should be as much as possible treated like any other person - with respect and dignity.

4. They should be included in all aspect of society with out embarrassment or shame. Each of us can do much good by being friendly and treating handicapped persons with respect.

**Summary and conclusion**

A good start has been made in helping the mentally handicapped in this country. There is a need to continue and expand.

1. Advocacy for who cannot adequately speak for themselves.
2. Support regular and vocational education for the handicapped.
3. Education for parents to prevent mental retardation.
4. Counseling and support for parents of retarded children.
5. Strong parent organizations that are empowered to promote the right of handicapped.
6. Diagnostic and counseling services.
7. Government support for the programs.

8. Training for those working in the area of retardation.

9. Services for those in remote areas.

10. Coordination among all organizations working with the handicapped.

As we have visited some of the classes for the retarded we are saddened by the lack of proper facilities and teaching materials. But we are also greatly impressed with the dedication and love of the teachers for the children whom they are teaching. We also see a great opportunity that exist here. In more developed countries they have been mistakes made that have become so much a part of the existing educational structure that it is almost impossible to change them. In Nepal is the opportunity to set up programs properly and to avoid the mistakes that have become entrenched in more developed countries. It is challenging and also so very rewarding to work among these special children and their parents.

**We Extend Our Best Wishes**  
**To**  
**ROTARY CLUB OF PATAN**  
**On**  
**The 12th Installation Ceremony**

**Sagarmatha Insurance Co. Ltd.**  
 Thapathali, Bagmati Bridge, Kathmandu.  
 Ph. 247941, Fax : 247947  
 G. P. O. Box 12211

# एक वर्षे शिक्षण योजना

१ वर्षे शिक्षणमा  
 व्याजदर १३.५०%  
 एक मुष्ट लिएमा १४.२०%

रु. ७५,०००/- सम्मको  
 निशुल्क औषधी उपचार बीमा

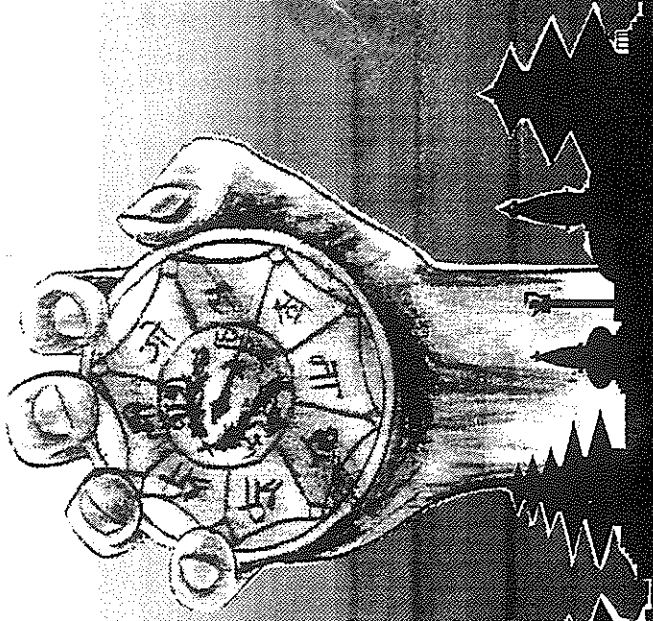
## Discount Card समझौता

प्रत्येक रु.१,५०,०००/- जम्मा गर्दा एक सुत्को शिक्का तथा  
 प्रत्येक रु.१०,०००/- जम्मा गर्दा एक बर्षिको शिक्का



असर्को तथा चाँडो सिक्काहरू  
 आकर्षक उपहारहरू

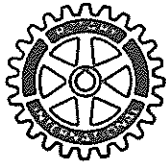
प्रिमियर फिन्नान्स कं. लि.  
 नेपाल राष्ट्र बैंकबाट इजाजत प्राप्त  
 त: फा: लो: सापभवन,  
 पी. ब. नं. १३४७१, ललितपुर, नेपाल ।  
 फोन नं. ५२५५३६



प्रिमियर फिन्नान्स वर्ल्ड लि.  
 विश्वास, विश्वास्नीयता र सुरक्षा

फाईनान्सको दुनियामा नौलो आयाम



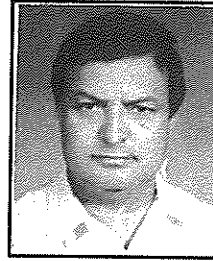


## ROTARY CLUB OF PATAN

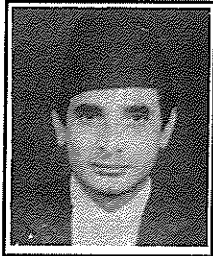
*List of Members : As of January 1, 1997*



**DR. AMATYA RAMCHHAYA MAN**  
 Classification: ENT Surgeon;  
 Address: T U Teaching Hospital  
 Kathmandu, Nepal;  
 Residence: Kumaripati, Lalitpur,  
 Nepal;  
 Ph(O): 412303, 412404  
 Ph(R): 538360, 538821  
 Born: 3 Oct; Wed: 3 Dec.  
 Anne: MEERA; Serv: D; Join: 1988



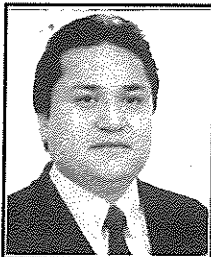
**GIRI BASANT**  
 Classification: Education- Secondary;  
 Address: Arniko Secondary Boarding  
 School  
 Khumal Tar, Lalitpur, Nepal;  
 Residence: Tikhidewal, Ward No 14,  
 Lalitpur, Nepal;  
 Ph(O): 522873/526808  
 Ph(R): 534121  
 Born: 8.3.1939 Wed: 11 Dec. 1970  
 Anne: RATNA; Join 1997



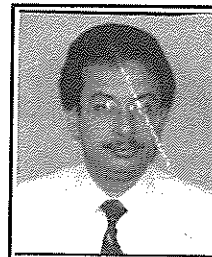
**ACHARYA CHIRINUBI**  
 Classification: Audit General;  
 Address: MC Traders,  
 Kopundole, Lalitpur, Nepal;  
 Residence: Lagankhel, Lalitpur-6, Nepal;  
 Ph(R) 538378 (O)522494  
 Born: 10 Feb; Wed: 8 Mar;  
 Anne: LALITA; Serv:T; Join: 1992



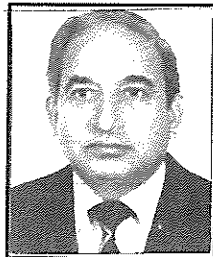
**DR. (MRS) GIRI KANTI (PHF)**  
 Classification: gynaecologist;  
 Address: Prasuti Griha, Tel 223466  
 Thapathali, Kathmandu, Nepal;  
 Residence: Jyoti Sadan, Pulchowk,  
 3/302  
 Lalitpur -3, Nepal;  
 Ph(O): 223466  
 Ph(R): 521316, 527896  
 Born: 7 Mar; Join: 1994



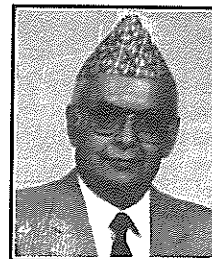
**BAJRACHARYA BIJAY (MPHF)**  
 Classification: Jeweller;  
 Address: Gems Jewellery Industries  
 (P) Ltd. Naya Baneshwar,  
 GPO1807, Kathmandu, Nepal;  
 Residence: Pulchok, Lalitpur-3, Nepal;  
 Ph(O): 478753, 478754  
 Ph(R): 521525, 524586  
 Fax: 526738, 472810  
 Born: 23 Aug; Wed: 2 Mar;  
 Anne: RAJANI; Serv: P, VP, D; Join: 1986  
 Email: aqumarin@vishnu ccsl com.np



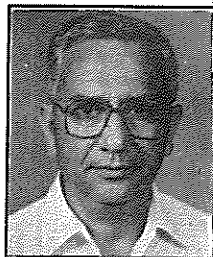
**GYAWALI BACHAN**  
 Classification: Tourism Marketing;  
 Address: Narayani Group of Tourism  
 Products  
 Lalitpur, Nepal;  
 Residence: Shree Durbar Tole,  
 Patan Dhoka, Lalitpur, Nepal;  
 Ph(O): 525015  
 Ph(R): 524138; Fax: 521291  
 Born: 26 Dec; Wed: 4 Apr;  
 Anne: BHAVANA; Serv: SGT;  
 Join: 1992



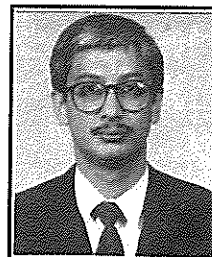
**DHITAL VISHNU PRASAD (PHF)**  
 Classification: Food and Agriculture;  
 Residence: Shree Durbar Tole,  
 POB 41, Lalitpur, Nepal;  
 Ph(O): 521024  
 Ph(R): 521024; Fax: 521889  
 Born: 15 Apr; Wed: 16 Feb;  
 Anne: VUAYA LAXMI; Serv: P, VP, D;  
 Join: 1992



**GYAWALI CHANDRA SEKHAR (MPHF)**  
 Classification: Hotelier;  
 Address: Narayani Hotel,  
 GPO 1357, Kathmandu, Nepal;  
 Residence: Shree Durbar Tole,  
 Pulchok, Lalitpur, Nepal  
 Ph(O): 521771, 521442  
 Ph(R): 521311; Fax: 521291  
 Born: 14 Nov; Wed: 20 Jan;  
 Anne: BUW; Serv: VP; Join: 1986



**DIXIT KAMAL MANI (PHF)**  
 Classification: Sen Active (Belles Lettres);  
 Address: Madan Puruskar Pustakalaya  
 Shree Durbar Tole, Lalitpur, Nepal;  
 Residence: Shree Durbar Tole,  
 Patan Dhoka, Lalitpur, Nepal  
 Ph(O) 521014  
 Ph(R): 536338; Fax: 521013  
 Born: 2 Sep; Wed: 11 June  
 Anne: ANJU; Serv: D, SGT; Join: 1986



**GYAWALI LOCHAN**  
 Classification: Trekking Agent;  
 Address: Nepal Trek House,  
 Patan Dhoka; Lalitpur, Nepal;  
 Residence: Shree Durbar Tole,  
 Patan Dhoka, Lalitpur, Nepal;  
 Ph(O): 522871, 525018  
 Ph(R): 521311; Fax: 521291  
 Born: 12 Nov; Wed: 30 Jan;  
 Anne: SANGITA; Serv: SGT; Join: 1986

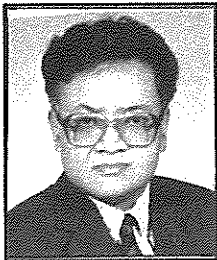


LALIT DHARA SOUVENIR ISSUE

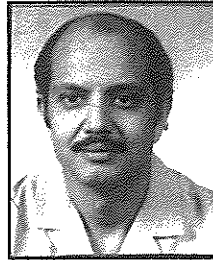
# ROTARY

DISTRICT 3020  
CLUB NO. 25125

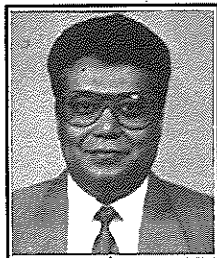
## CLUB OF PATAN



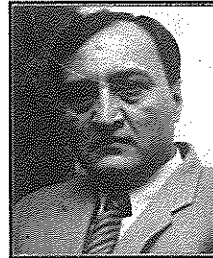
**HALWAI NARAYAN GOVIND**  
 Classification: Civil Engineer;  
 Address: MULTI Disciplinary Consultants (P) Ltd.  
 Kopundole, GPO Box 5720, Kathmandu, Nepal;  
 Residence: Thasikhel, Lalitpur-5, Nepal;  
 Ph(O): 525076, 529304  
 Ph(R): 521364; Fax: 523103  
 E-mail: mdc@mos.com.np  
 Born: 4 Oct; Wed: 10 June;  
 Anne: MUNU; Serv: S,D;; Join: 1987



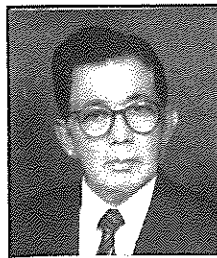
**PANDEY RABENDRA RAJ (MPHF)**  
 Classification: Airline GSA;  
 Address: Everest Express Tours & Travel (P) Ltd.,  
 GPO Box 482, Kathmandu, Nepal;  
 Residence: Sanepa, Lalitpur, Nepal;  
 Ph(O): 220759  
 Ph(R): 521652; Fax: 226795(O), 525124(R)  
 E-mail: rabendra@eett.mos.com.np  
 Born: 16 Apr; Wed: 19 Feb;  
 Anne: CHANDRA LEKHA; Serv: VP, D;  
 Join: 1990



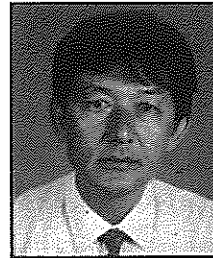
**KAYASTHA MATYSENDRA LAL (MPHF)**  
 Classification: Architect;  
 Address: Mr & Mrs. M.L. Kayastha & Associates,  
 MLK Building, Kopundole, Lalitpur-10, Nepal;  
 Residence: Chandralaya, Kopundole, Lalitpur-10, Nepal;  
 Ph(O): 523758, 520623, 520624  
 Ph(R): 524626; Fax: 524758  
 Born: 25 May; Wed: 7 July;  
 Anne: CHANDRA LEKHA; Serv: P,S; Join: 1986



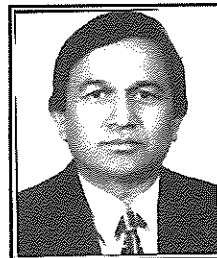
**PRASAI PRAJAPATI (PHF)**  
 Classification: Travel Agent;  
 Address: Natraj Tours & Travels (P) Ltd.  
 Ghantaghar, Kamaladi,  
 GPO 495, Kathmandu, Nepal;  
 Residence: Thapathali Height,  
 Thapathali; Kathmandu, Nepal;  
 Ph(O): 222906  
 Ph(R): 229277; Fax: 227372  
 Born: 14 Jan; Wed: 1 Jan;  
 Anne: SHARDA; Serv: P, VP, D;  
 Join: 1986



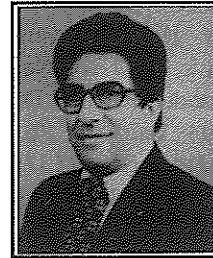
**LAKHEY SURESH RAJ**  
 Classification: Economist;  
 Address: UNDP/ILO,  
 POB 107, Lalitpur, Nepal;  
 Residence: Sanepa, Lalitpur-1, Nepal;  
 Ph(O): 414550  
 Ph(R): 529878  
 Born: 15 Aug; Wed: 11 May;  
 Anne: JANAKI; Serv: D; Join: 1986



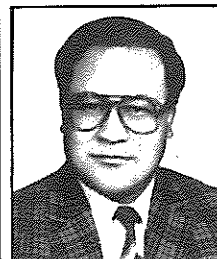
**RAI MADAN KUMAR**  
 Classification: Seed Technology;  
 Address: PO Box 334, Lalitpur, Nepal;  
 Ph(R): 525187;  
 Born: 18 July; Wed: 15 May  
 Anne: SUBHADRA; Join: 1995



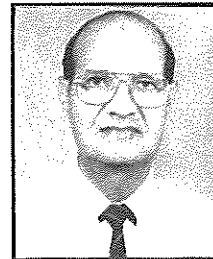
**NEUPANE TULASI**  
 Classification: Economist;  
 Address: Ministry of Finance,  
 Bag Durbar,  
 GPO Box 2314, Kathmandu, Nepal;  
 Residence: Jhamsikhel, Lalitpur-1,  
 Nepal;  
 Ph(O): 221149  
 Ph(R): 522320; Fax: 535963  
 Born: 20 March; Wed: 16 Jan;  
 Anne: KAMALA; Serv: S,D; Join: 1986



**RANA JAGDISH (PHF)**  
 Classification: Sen Active, (Literary Writing);  
 Address: Trikuti, Battispatali  
 GPO 1763, Kathmandu, Nepal;  
 Ph(R): 472743;  
 Born: 18 Aug; Wed: 16 July;  
 Anne: BHUVAN; Serv: DG, P



**NYACHHYON KAMAL BAHADUR**  
 Classification: Heavy Textile  
 Manufacturer;  
 Address: Himal Tents (P) Ltd.  
 Patan Industrial Estate, Lagankhel,  
 Lalitpur, Nepal;  
 Residence: 5/48 Lagankhel, Lalitpur-5,  
 Nepal;  
 Ph(O): 522202, 527202  
 Ph(R): 521167; Fax: 527167  
 Born: 15 Jan; Wed: 15 Feb;  
 Anne: SULOCHANA; Serv: D,T; Join: 1986



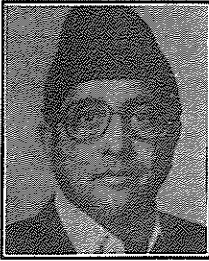
**DR. RANR KRISHNA JUNG**  
 Classification: Public Health;  
 Address: Tribhuvan University  
 Teaching Hospital  
 Kathmandu, Nepal;  
 Residence: Happy Height, Tharo  
 Dhunga, Dhobighat,  
 Lalitpur, Nepal  
 Ph(O): 412303, 412404  
 Ph(R): 527007;  
 Born: 3 Aug; Wed: 30 June  
 Anne: SHANTA; Serv: D; Join: 1995

ALIP ONASA SOUVENIR ISSUE

# ROTARY

DISTRICT 2774  
CLUB NO 2774

## CLUB OF PATAN



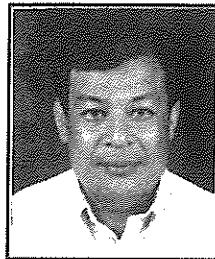
**RANA SAGAR SHUMSHER (PHF)**  
 Classification: Traditional Handicrafts;  
 Address: Nepal Traditional Crafts,  
 Pulchowk,  
 GPO Box 979, Kathmandu, Nepal;  
 Residence: Kopundole, Lalitpur, Nepal;  
 Ph(O): 527916, 523608  
 Ph(R): 521667; Fax: 527871  
 Born: 17 Feb; Wed : 18 June;  
 Anne: BRINDA; Serv: P, VP, D; Join: 1986



**SHAKYABANSA NARENDRA NARSINGH**  
 Classification: Sen Active (Metal Caster);  
 Address : Mahaboudha Bidyadhari  
 Shilpa Bhandar (P) Ltd.,  
 Patan Industrial Estate, Lalitpur;  
 GPO Box 2330, Ktm, Nepal;  
 Residence: 112, Mahaboudha,  
 Lalitpur - 12, Nepal;  
 Ph(O): 524021- *Resi 531848*  
 Ph(R): 525856, 521431;  
 Born: 15 Aug; Wed: 15 Apr;  
 Anne: SANTA MAYA; Serv: D; Join: 1986



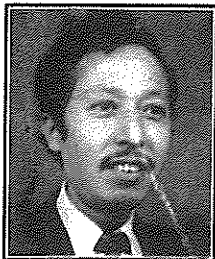
**RANA SHREE DHAR SHUMSHER JB (PHF)**  
 Classification: Ex-Serviceman;  
 Address: Sri Sadma, 3/386 Pulchowk,  
 Lalitpur, Nepal;  
 Ph(O): 523915  
 Ph(R): 522012, 521122  
 Born: 16 Aug; Wed: 7 Falgun;  
 Anne: PADAM DEVI; Join: 1995



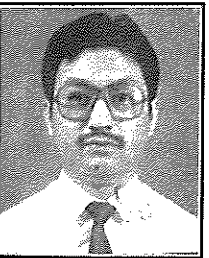
**SHAKYA PUSHKAR MAN (PHSM)**  
 Classification: Carpet Export;  
 Address: Carpet House, Pulchowk,  
 GPO Box 167, Kathmandu, Nepal;  
 Residence: Man Bhawan, Lalitpur - 5,  
 Nepal;  
 Ph(O): 521335, 527238  
 Ph(R): 523492; Fax: 521582  
 Born: 14 Jan; Wed: 27 Feb;  
 Anne: RITA; Serv: T; Join: 1993



**DR. REGMI PRAKASH RAJ**  
 Classification: Cardiologist;  
 Address: Dept. of General Medicine,  
 Bir Hospital, Kathmandu, Nepal;  
 Residence: 3/115, Dhobighat,  
 Lalitpur, Nepal;  
 Ph(O): 221119;  
 Ph(R): 525536, 536474;  
 Born: 30 June; Wed: 15 Apr;  
 Anne: JANAKI; Serv: D; Join: 1986



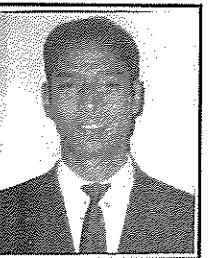
**SHAKYA SIDDHI BAHADUR (PHF)**  
 Classification: Bronze Expert;  
 Address: Shree Durbar Marg, Pulchowk,  
 GPO Box 1142, Kathmandu, Nepal;  
 Residence: Shree Durbar Marg,  
 Pulchowk, GPO Box 1142, Ktm, Nepal;  
 Ph(O): 526792  
 Ph(R): 525465;  
 Born: 15 July; Wed: 14 Feb;  
 Anne: CHAITRA LAXMI; Serv: JS, D;  
 Join: 1988



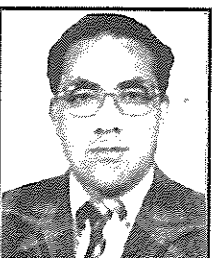
**SHAKYA GYANU RAJ**  
 Classification: Stone Crushing;  
 Address: 179, Hakha, Ward No. 11,  
 Lalitpur, Nepal;  
 Ph(O): 244114, 231116;  
 Ph(R): 524588, 526014;  
 Born: 5 Nov; Wed: 18 Mar;  
 Anne: SUNITA; Join: 1995



**SHAKYA TIRTHA MAN**  
 Classification: Legislative Drafting;  
 Address: Secretary, Ministry of Law and  
 Justice,  
 Babar Mahal, Kathmandu, Nepal;  
 Residence: 17 Hakha Tole,  
 Lalitpur-12, Nepal;  
 Ph(O): 220987; Fax: 220684  
 Ph(R): 522467; Fax: 533433  
 Born: 21 July; Wed: 14 Feb;  
 Anne: NANI SHOYA; Serv: P, VP, D;  
 Join: 1987



**SHAKYA KARNA BAHADUR**  
 Classification: Dental Technology;  
 Address: Hakha, Lalitpur;  
 GPO Box 2252, Kathmandu, Nepal;  
 Ph(R): 526065;  
 Born: 10 Aug; Wed: 15 Feb.  
 Anne: MEENA; Join: 1995



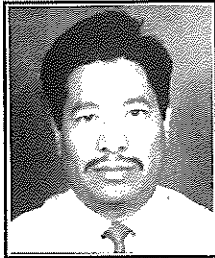
**SHILPAKAR MOTI LAL**  
 Classification: Wood Carver;  
 Address: Wood Carving Industries (P)  
 Ltd., Patan Industrial Estate, Lalitpur,  
 GPO Box 1264, Kathmandu, Nepal;  
 Residence: Lokeswar Tole, Man Bhawan,  
 Lalitpur-5 Nepal;  
 Ph(O): 533366, 533214  
 Ph(R): 521447; Fax: 527730  
 Born: 20 Jan; Wed: 25 Apr;  
 Anne: SHYAM LUXMI; Serv: D,T;  
 Join: 1986



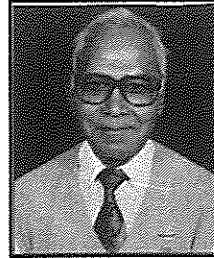
**SHRESTHA BIHARI KRISHNA**  
 Classification: Anthropologist;  
 Address: GPO Box 5720,  
 Kathmandu, Nepal;  
 Residence: Chakupat, Patan Dhoka,  
 Lalitpur, Nepal;  
 Ph(R): 522173; Fax: 523103  
 E-mail: mdc@mos.com.np  
 Born: 26 July; Serv: D; Join: 1992



**THAPA DHRUBA**  
 Classification: Carpet Manufacturer;  
 Address: Narayani Carpet (P) Ltd.  
 Hotel Narayani Show Room,  
 Pulchowk, Lalitpur,  
 GPO Box 1357, Ktm, Nepal;  
 Residence: 4/159, Jawalakhel,  
 Lalitpur, Nepal;  
 Ph(O): 521442 Ph(R): 524999;  
 Born: 22 April; Serv: T; Join: 1986



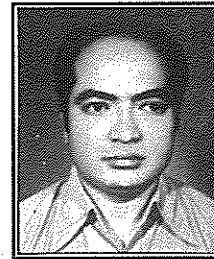
**SHRESTHA GANESH RAJ**  
 Classification: Rubber Recycling;  
 Address: Pashupati Rubber Industries,  
 Patan Industrial Estate, GPO 1970,  
 Kathmandu, Nepal;  
 Residence: Sinchahity, Lagankhel,  
 Ph(O): 522157 Ph(R): 524780  
 Born: 22 Oct; Wed: 7 Jan;  
 Anne: BUAYA LAXMI; Serv: SGT;  
 Join: 1993



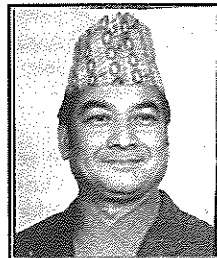
**THAPA RAM SINGH**  
 Classification: Financial Consultant;  
 Address: 3/280 Jhamsikhel Dhobighat,  
 Lalitpur, Nepal;  
 Ph(R): 521103;  
 Born: Sept. 2; Wed: 25 Feb.  
 Anne: SHARALA; Join: 1997



**(Mrs) SHRESTHA RENU (PHSM)**  
 Classification: Education Primary;  
 Address: Saheed Dharma Bhakta Primary  
 School, Nakhu, Lalitpur,  
 GPO 8975 EPC 856, Kathmandu, Nepal;  
 Residence: Lagankhel, Lalitpur-6, Nepal;  
 Ph(O): 522239  
 Ph(R): 525677;  
 Born: 12 Feb; Serv: D; Join: 1992



**SHRESTHA SANTA KUMAR**  
 Classification: Liquor Manufacturer;  
 Address: Island Jungle Resort,  
 Durbar Marg, GPO Box 2154, Ktm,  
 Nepal;  
 Residence: Dhobighat, Jawalakhel,  
 Lalitpur, Nepal;  
 Ph(O): 229116, 225615, 220162  
 Ph(R): 521745, 522757; Fax: 225615  
 Born: 5 Nov; Wed: 3 May;  
 Anne: NIRMALA; Join: 1992



**SHRESTHA YAGYA BAHADUR**  
 Classification: Revenue Consultant;  
 Address: Chakupat, Lalitpur-10,  
 Nepal;  
 Ph(O): 252308  
 Ph(R): 535826, 523753  
 Born: 8 Apr; Wed: 19 Feb;  
 Anne: MARY; Serv: D, SGT;  
 Join: 1993

*We Extend Our Best Wishes*

To

**ROTARY CLUB OF PATAN**

On

**THE 12TH INSTALLATION CEREMONY**

**Pashupati Rubber Industries (P.) Ltd.**

Patan Industrial Estate  
 Lagankhel, Lalitpur.  
 Phone : 522157



Narayani Hotel  
~~527370~~

LALIT DHABA SOUVENIR ISSUE  
**ROTARY**  
CLUB OF PATAN

525015  
525016  
525017  
525018



*A different kind of place...*



**Safari Narayani**  
CHITWAN. NEPAL

For Information or reservations:  
Telephone : 527370 Fax : 521291

## INNER WHEEL CLUB OF PATAN

### *List of Members*



**VIJAYA LAXMI DHITAL**  
 Res. Shree Durbar Tole  
 P. O. Box No. 41, Lalitpur  
 Ph. 521024  
 Born: 15 Aug.; Wed: 16 Feb.  
 RTN. VISHNU



**MARY SHRESTHA**  
 Res. Chakupat, Lalitpur  
 Ph. 535826  
 Born: 22 Chaitra; Wed: 19 Feb.  
 RTN. YAGYA



**MUNU RAJKARNIKAR**  
 Res. Thasikhel, Lalitpur  
 Ph. 521364  
 Born: 5 Aug.; Wed: 10 June  
 RTN. NARAYAN



**ANJU DIXIT**  
 Res. Shree Durbar Tole, Lalitpur  
 Ph. 536338  
 Born: 27 Jan.; Wed: 11 June  
 RTN. KAMAL MANI



**BIJAYA LAXMI SHRESTHA**  
 Res. Sinchahiti, Lagankhel, Lalitpur  
 G. P. O. Box 1970  
 Ph. 524780  
 Born: 12 Apr.; Wed: 7 Jan.  
 RTN. GANESH



**SHARDA PRASAI**  
 Res. Kupondole, Lalitpur  
 Ph. 229277  
 Born: 14 June; Wed: 1 Jan.  
 RTN. PRAJAPATI



**RITA SHAKYA**  
 Res. Manbhawan, Lalitpur-5  
 G. P. O. Box No. 167  
 Ph. 523492  
 Born: 6 July; Wed: 27 Feb.  
 RTN. PUSHKAR



**CHANDRALEKHA KAYASTHA**  
 Res. Kupondole, Lalitpur  
 Ph. 524626  
 Born: 4 May; Wed: 7 July  
 RTN. MATSENDRA



**NIRMALA SHRESTHA**  
 Res. Dhobighat, Jawalakahel  
 Lalitpur  
 Ph. 521745  
 Born: 25 Apr.; Wed: 3 May  
 RTN. SHANTA



**BRINDA RANA**  
 Res. Kupondole, Lalitpur-3  
 Ph. 521667  
 Born: 4 Oct.; Wed: 18 June  
 RTN. SAGAR



**CHANDRALEKHA PANDEY**  
 Res. Sanepa, Lalitpur  
 Ph. 521652  
 Born: 17 Sept.; Wed: 18 Feb.  
 RTN. RABENDRA



**SHANTA RANA**  
 Res. Happy Height,  
 Tharidhunga, Dhobighat  
 Ph. 527007  
 Born: 14 May; Wed: 30 Jun.  
 RTN. KRISHNA



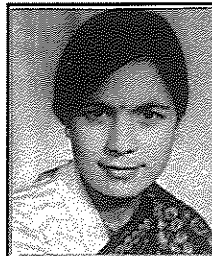
**CHAITRA LAXMI SHAKYA**  
 Res. Sri Durbar Marg  
 Pulchowk, Lalitpur  
 Ph. 526792  
 Born: 22 Mar.; Wed: 14 Feb.  
 RTN. SIDDHI



**RAJANI BAJRACHARYA**  
 Res. Pulchowk, Lalitpur  
 Ph. 524586  
 Born: 20 Feb.; Wed: 2 Mar.  
 RTN. BIJAYA



**NANI SHOVA SHAKYA**  
 Res. 17, Hakha Tole  
 Lalitpur-12  
 Ph. 522467  
 Born: 21 Oct.; Wed: 14 Feb.  
 RTN. TIRTHA



**SULOCHANA NYACHHYON**  
 Res. 5/48, Lagankhel, Lalitpur  
 Ph. 521167  
 Born: 18 Aug.; Wed: 15 Feb.  
 RTN. KAMAL



**MEERA AMATYA**  
 Res. Kumaripati, Lalitpur  
 Ph. 538360  
 Born: 24 July; Wed: 3 Dec.  
 RTN. RAMCHHAYA MAN

**WE EXTEND OUR BEST WISHES**

**TO**

**ROTARY CLUB OF PATAN**

**ON**

**The 12th Installation Ceremony**

**Himal Tents (P.) Ltd.**

Patan Industrial Estate

Phone : 522202/527202 Fax : 527167





## INNER WHEEL CLUB OF PATAN

CHARTERED 6.04.1994

CLUB NO. 4363

### ACTIVITIES REPORT

-By Ann. Mrs. Chandra Lekha Pandey  
 President 1996-97

1. We collected and donated old clothes for flood victims and handed over to the committee member of flood victims Dr. Arju Rana Deupa, wife of former Prime Minister Sher Bahadur Deupa.
2. The scholarship for four girl students was continued after reviewing their performances in their respective schools.
3. A food stall was installed on the ground of Rotary Club of Kathmandu, Thapathali, on the occasion of Children's Day with a view to raise funds to help the Poor Children's Clinic and Old Women Home, run by the Inner Wheel Club of Kathmandu.
4. Our Club decided to distribute clothes to the poor and needy infants of the Maternity Hospital, Thapathali, twice a year instead of once a year. The donations were made on December 1996 and May 1997.
5. Medicine was collected and donated to Sanepa Chakrapath free clinic.

6. We organised free sightseeing programme for the spouse of Rotarians attending the Conference of district 3290 held on 21-23 February 1997 at Kathmandu. On the same occasion Dr. Arju Rana Deupa and Mrs. K.V. Rajan, wife of Indian Ambassador were invited and briefed on activities of Inner Wheel Club of the district by the Presidents of the different Inner Wheel Clubs.
7. A talk programme was given by Rtn. Dr. Kanti Giri, a senior Gynaecologist, on Menopause.

I would like to take this opportunity to thank the executive members and club members for the support they have given to make the above activities successful in the spirit of the motto for 1996-97, "LOOK BEYOND YOURSELF AND BE INVOLVED."

My special appreciation goes to our club Secretary Ann Ms. Bijaya Laxmi Shrestha and Treasurer Ann Ms. Rita Shakya who have been continuous source of inspiration for our club. Ann Ms. Bijaya Laxmi Shrestha and Ann Ms. Rita Shakya have been re-elected.

The newly elected executive members are:

- |                                 |                                |
|---------------------------------|--------------------------------|
| President                       | - Ann Vijaya<br>Laxmi Dhital   |
| Vice President                  | - Ann Munu<br>Rajkarnikar      |
| Secretary                       | - Ann Bijaya<br>Laxmi Shrestha |
| Jt. Secretary                   | - Ann Nirmala<br>Shrestha      |
| Treasurer                       | - Ann Rita<br>Shakya           |
| Jt. Treasurer                   | - Ann Mary<br>Shrestha         |
| International<br>Correspondence | - Ann Sharda<br>Prasai         |
| Club<br>Correspondence          | - Ann Anju Dixit<br>Immediate  |
| Past President                  | - Ann Chandra<br>Lekha Pandey  |

I wish the new executive members all the success in carrying out the motto for 1997-1998. "TOGETHER WE ARE STRONGER."

On behalf of our club I would like to thank Rotary Club of Patan for letting us share Tea and snacks with them free of cost for our monthly meeting and also for giving space for our club's activities report in their Twelfth Installation Souvenir issue.



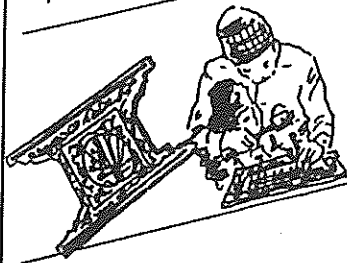
### BRONZES

We produce more than a hundred icons of different forms and sizes in bronze. Figurines of Gods, Goddesses, stylised as well as realistic animals and traditional designs in pots, pans, jugs, bells, vajra - you name it - are all available.



### WOOD WORK

The century old tradition of wood-carving is brought to life by our wood-carvers. The famous peacock screen window, the owl, elephant and horse and many other designs can be made to order in any shape and size.



### SILVER ORNAMENTS

From ear-rings, rings, bracelets in silver, to necklaces, belts and buckles in beads and copper is yours to pick and choose.



### CHRISTMAS GIFTS

Looking for something special for your loved ones? Each set of gleaming box or animal make an exquisite filigree present. Christmas tree ornaments exclusively designed by us will make your Christmas even more memorable.



### PAPIER MACHE

Paper products such as writing pads, cards, diaries etc., for everyday use papier-mache masks make wonderful decorations or souvenirs reminding you of the legends and practices of Nepali cultures and traditions.

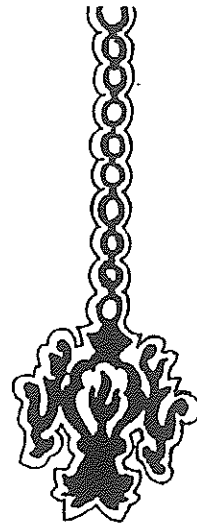
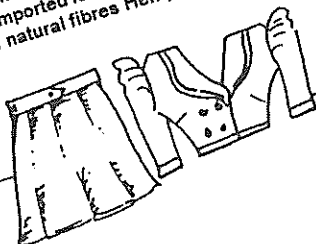


### CARPETS

The colours and designs are yours to choose. We produce a whole range of carpets using traditional motifs as well as modern designs in different sizes.

### GARMENTS / HIMALAYAN HEMP

For your fashionable tastes we produce garments using Nepali as well as imported fabrics. Besides we offer a range of products made from natural fibres Hemp & Alo



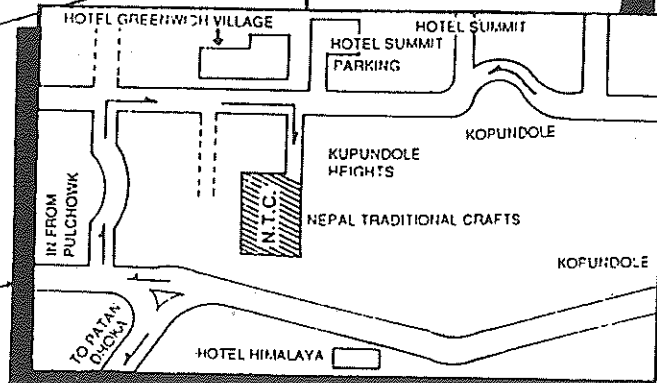
**NEPAL TRADITIONAL CRAFTS PVT. LTD.**  
 (Estd. 1964)

Kupondol Heights,  
 Lalitpur  
 Nepal

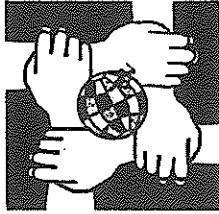
G.P.O. Box 979  
 Kathmandu, Nepal

Telex: 2322 BLUSTR NP  
 Fax: 977-1-527871  
 Tel: 527916  
 523608  
 521667

E-mail :  
[nepaitdl@crafts.mos.com.np](mailto:nepaitdl@crafts.mos.com.np)



Please visit our showroom at Kupundole Heights. Plus you can watch our artisans and craftsmen at work reproducing the various objects de' Arts.



Show Rotary Cares

**LET US JOIN HANDS**

**TO**



**FIGHT**

**DRUG ABUSE**

With Best Compliments



**Everest Express Tours & Travels (P.) Ltd.**

G.P.O. Box 482, Kathmandu, Nepal.

Tel : 220759 Fax : 226795

E-mail : rabendra@eett.mos.com.np

Watch your dreams in

**NEPAL**

through

*We offer :*

- \* *Special tours to Nepal, Tibet & Bhutan*
- \* *Selected Cultural, Adventure & Jungle Safari Tours of Nepal*
- \* *Trekking & White Water Rafting*
- \* *Hotel Reservation & Convention Arrangements*
- \* *Air Ticketing & Charter Flights*



**Vision** TOURS & TRAVELS (P.) LTD.

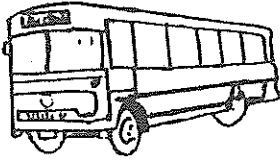
GPO Box : 10666 Thapathali, Kathmandu, Nepal. Tel : 244114, 231116 Fax : 977-1-244114/524588

हामी बितेका ३२ वर्षदिखि राष्ट्रलाई जोड्ने काममा जुटेका छौं ।

२०५२ श्रावण १ गतेदेखि  
यात्रु दुर्घटना बीमा शुरु  
गरिएको समेत यात्री  
महानुभावहरुमा जानकारी  
गराउँदछौं । तसर्थ अनिवार्य  
रुपमा टिकट लिनुहोला ।

साभकाका ७० भन्दा बढी बसहरु  
काठमाडौंबाट २४ रुटमा रातदिन चल्दछन् ।

नेपालगञ्ज, दाङ, बागलुङ, पोखरा, गोरखा, त्रिशुली,  
काठमाडौं, भरतपुर, हेटौंडा, कटारी, तौलिहवा, महेशपुर,  
भैरहवा, मेघौली, टाँडी, पर्सा, बीरगञ्ज, बरधहवा, गौर,  
मलंगवा, जलेश्वर, जनकपुर, राजविराज ।



भरपर्दो स्तरिय र  
नियमित सेवाका  
लागि साभका कै  
बस प्रयोग गरौं ।

साभका यातायात, पुल्चोक, ललितपुर, फोन : ५२१०६४, ५२२१४६

पाटन रोटरी क्लब  
को

१२ औं पदस्थापन समारोह  
को

पूर्ण सफलताको कामना गर्दछौं ।



श्री इन्भेष्टमेन्ट एण्ड फाइनेन्स कं. लि.

**Shree Investment and Finance Co. Ltd.**

चारखाल गुरुज्यूको चौर, डिल्लीबजार  
पो. व. नं. १०७१७, काठमाडौं ।  
फोन नं. ४२१७७९, ४२२०३८, ४२६१४६  
फ्याक्स : ९७७-१-४२१७७९

शाखा कार्यालय :-  
हिमालयन रोड, महेन्द्र चोक, विराटनगर ।  
फोन नं. ०२१-२३०९२  
फ्याक्स : ९७७-०२१-२३०९२

We Extend Our Best Wishes  
To  
**ROTARY CLUB OF PATAN**  
On  
The 12th Installation Ceremony

**GYANI INTERNATIONAL**

Pulchowk, Lalitpur, Nepal.  
Tel. 521335, 527238  
Fax : 521528  
E-mail : pushkar@sakart.mos.com.np  
gyani@sakart.mos.com.np

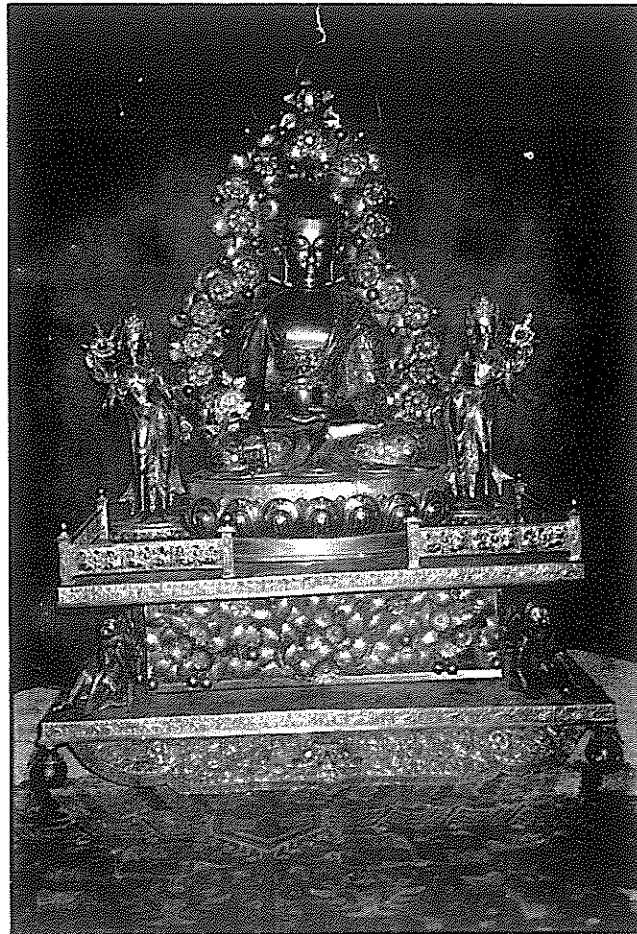
*We Extend Our Best Wishes  
For The Grand Success  
Of  
**ROTARY CLUB OF PATAN**  
On  
The 12th Installation Ceremony*



**SALT TRADING CORPORATION LIMITED**

Central Office : P.O. Box No. 483, Kathmandu, Nepal.  
Tel : 977-1-271014/271208/270315  
Fax : 977-1-271704/271395 Telex : 2241 NP Cable : NOON

*We Extend Our Best Wishes*  
to  
**ROTARY CLUB OF PATAN**  
on  
**THE 12TH INSTALLATION CEREMONY**

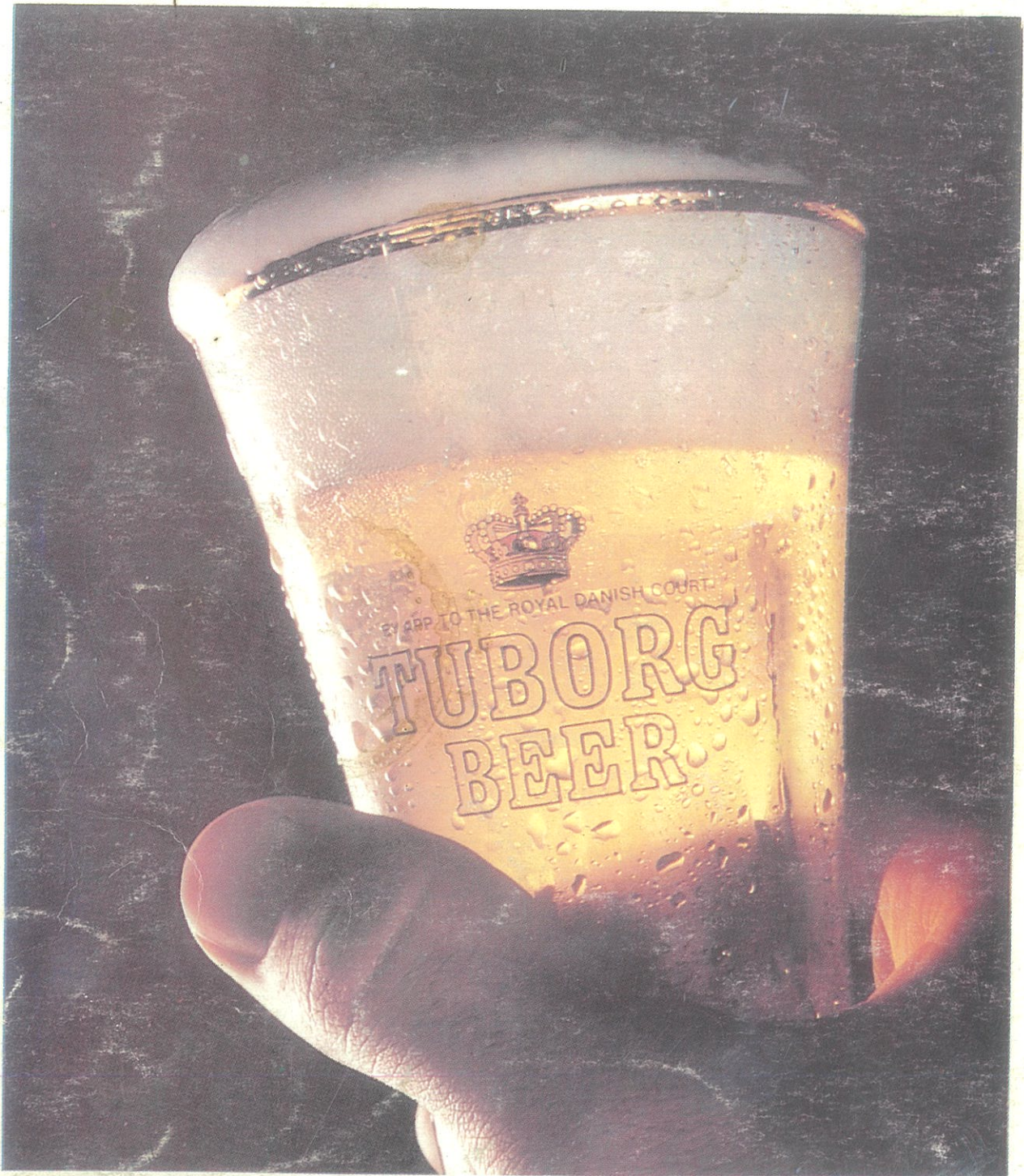


**SIDDHI ART GALLERY**  
**(BRONZE EXPERT)**

SRI DURBAR MARG, PULCHOWK, LALITPUR.  
GPO BOX : 1142 KATHMANDU, NEPAL.  
PHONE : 526792, FAX : 977-1-525465



For Gasket @ Hetauldo  
31" X 24"  
Thickness 2 mm



**TUBORG ... WHEREVER YOU ARE**